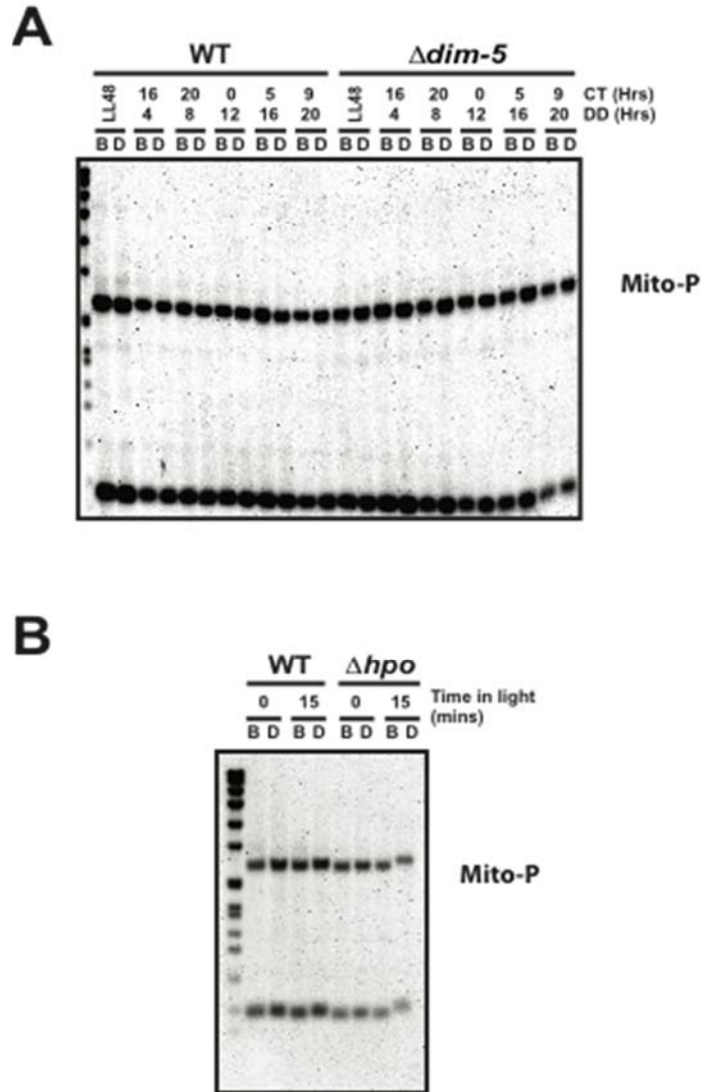


Figure S1.



**Figure S1 Control for DNA methylation in  $\Delta dim-5$  and  $hpo$ .** (A) Methylation sensitive Southern blot from Figure 1 was stripped and re-probed with a probe that hybridizes to a region within the mitochondria genome. The figure indicates complete digestion in WT (FGSC2489) and  $\Delta dim-5$  (XB18-11). Time in the dark (DD) and corresponding circadian time (CT) is indicated. The restriction enzymes are the methyl-sensitive *BfuCI* (B) and insensitive *DpnII* (D). (B) Same as in A except the membrane was from Figure 1B that examined the *hpo* strain.