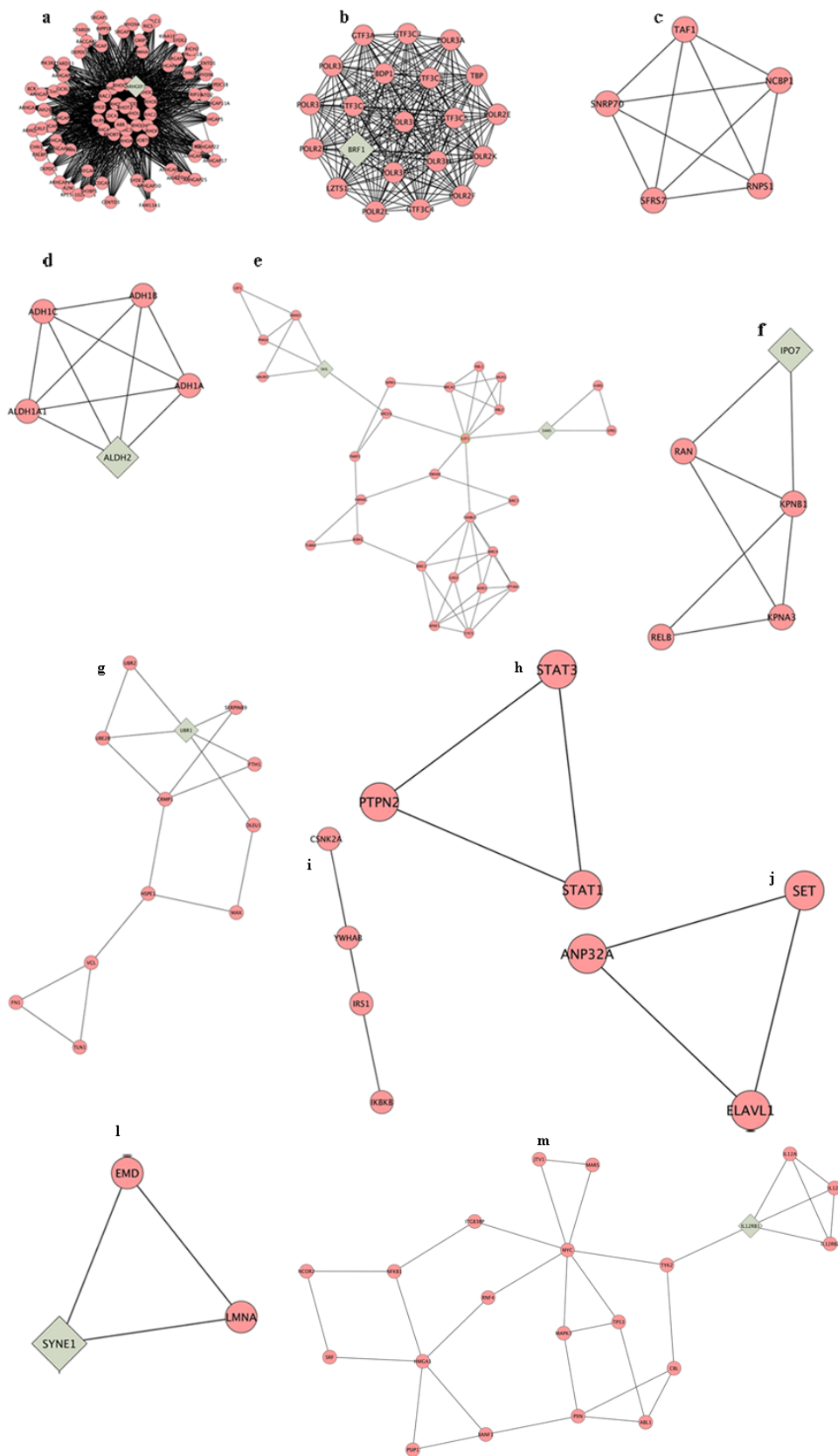


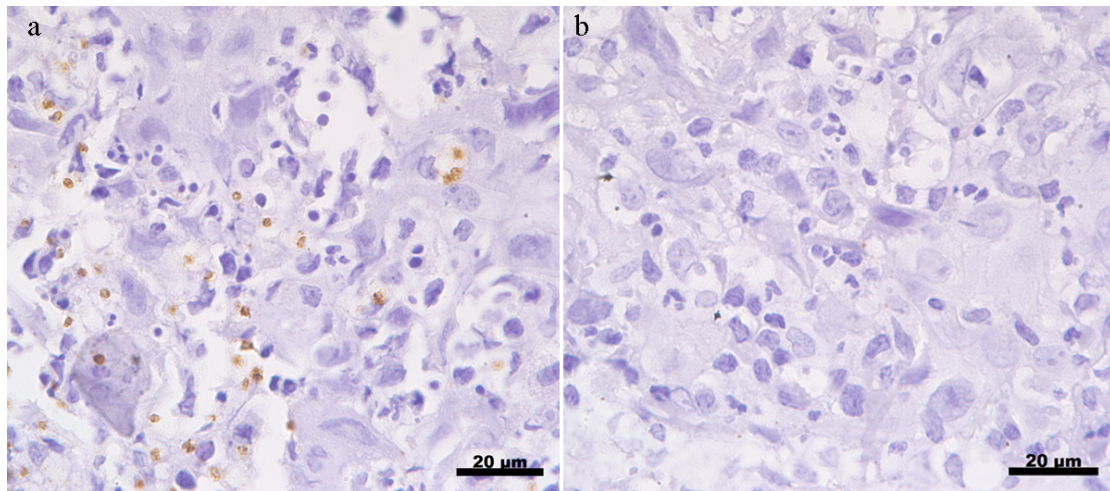


S2



**Supplementary Figure 2. Subnetwork modules extracted from the whole network.** Twelve modules are shown (a–m). Network modules were generated by analysis of the whole network (supplementary Figure 1) and were extracted using an MCODE tool.

S3



**Supplementary Figure 3:** Immunohistochemistry for *Leishmania*. (a) Tissue sections of CL patients (n=5) were obtained and stained for *Leishmania*. Isotype control was shown in b. All samples were counterstained with hematoxylin and examined by light microscopy. Scale bar = 20µm.