

Fig. S1 Expression similarity of stage I patients. mRNA expression profiles of TCGA-AK-3440, TCGA-B0-5098 and TCGA-B0-5117 are quite different from other samples, but all of them are composed of 85% tumor nuclei and less than 5% normal cells.

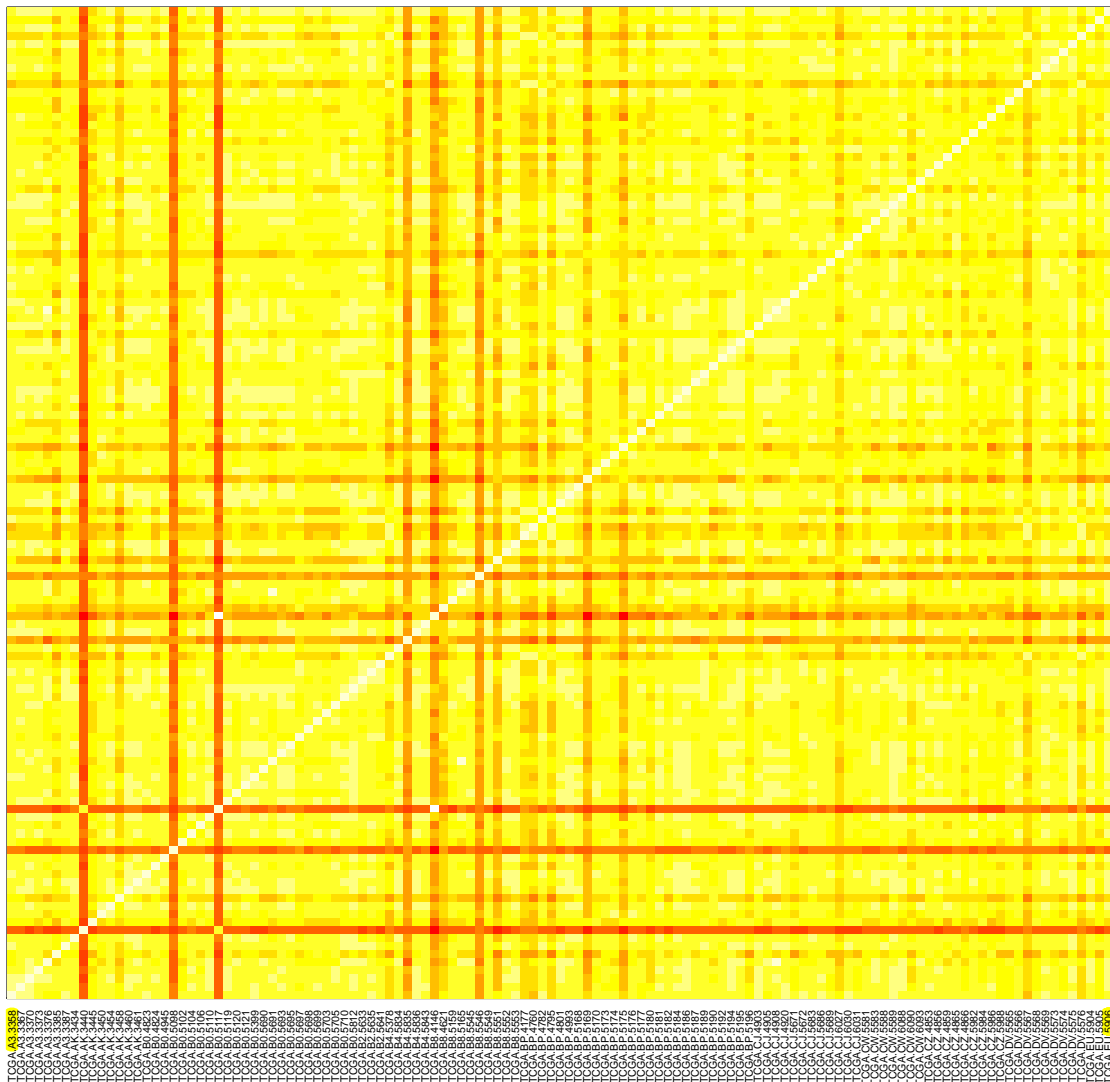
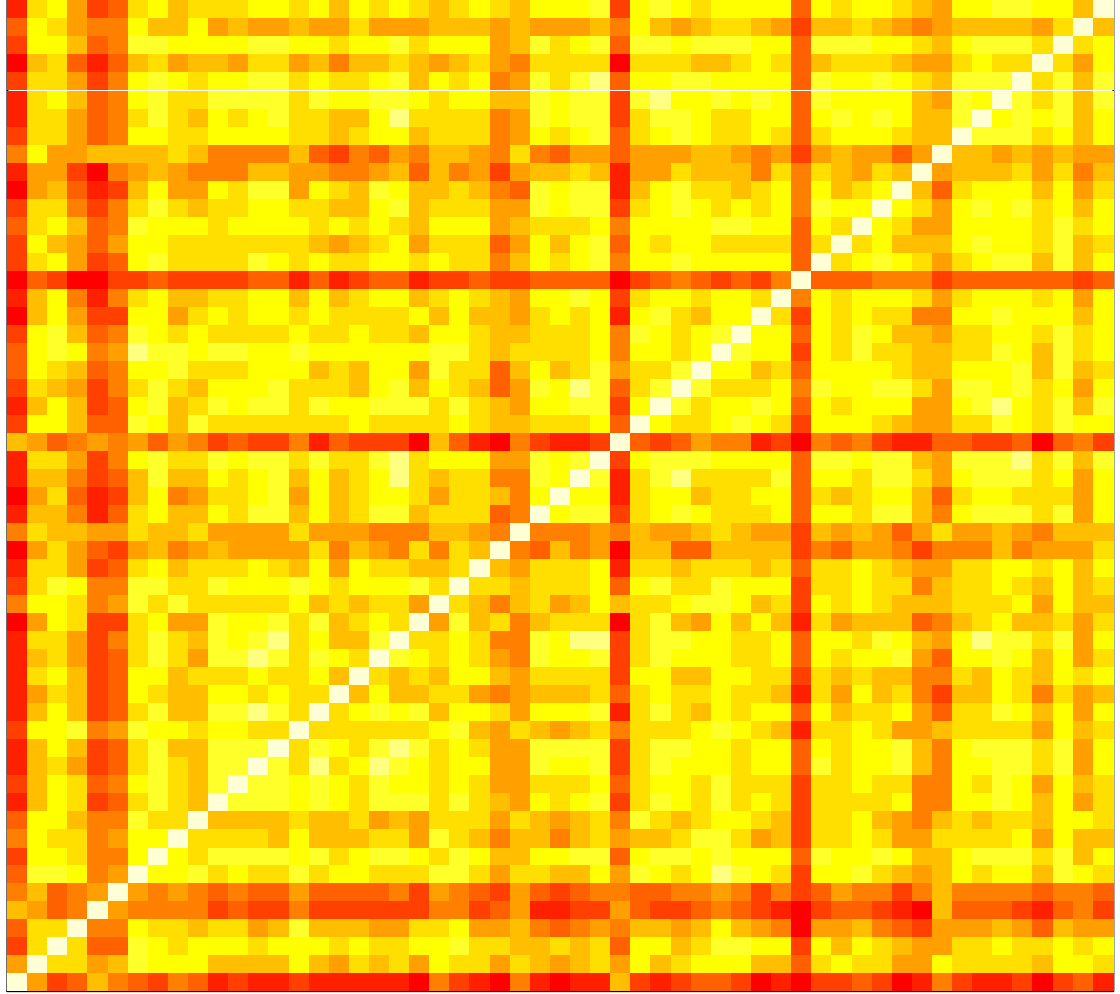


Fig. S2 Expression similarity between stage IV patients. Although TCGA-B0-4688, TCGA-B0-4698, TCGA-B0-4699, TCGA-BP-4770 and TCGA-CJ-5681 show different expression profiles from others, all of them are composed of at least 85% tumor nuclei and less than 15% necrotic cells.



TCGA.B0.4688  
TCGA.B0.4690  
TCGA.B0.4691  
TCGA.B0.4697  
TCGA.B0.4698  
TCGA.B0.4699  
TCGA.B0.4700  
TCGA.B0.4701  
TCGA.B0.4703  
TCGA.B0.4712  
TCGA.B0.4714  
TCGA.B0.4718  
TCGA.B0.4814  
TCGA.B0.4818  
TCGA.B0.4819  
TCGA.B0.4828  
TCGA.B0.4841  
TCGA.B0.4844  
TCGA.B0.4845  
TCGA.B0.4846  
TCGA.B0.4847  
TCGA.B0.5080  
TCGA.B0.5092  
TCGA.B0.5094  
TCGA.B0.5107  
TCGA.B0.5109  
TCGA.B0.5402  
TCGA.B0.5712  
TCGA.B4.5377  
TCGA.B8.4622  
TCGA.BP.4770  
TCGA.BP.5178  
TCGA.BP.5201  
TCGA.CJ.4904  
TCGA.CJ.4918  
TCGA.CJ.4923  
TCGA.CJ.5677  
TCGA.CJ.5678  
TCGA.CJ.5680  
TCGA.CJ.5681  
TCGA.CJ.5682  
TCGA.CJ.6028  
TCGA.CJ.6033  
TCGA.CW.5680  
TCGA.CW.5685  
TCGA.CW.5691  
TCGA.CW.6087  
TCGA.CZ.5454  
TCGA.CZ.5455  
TCGA.CZ.5460  
TCGA.CZ.5461  
TCGA.CZ.5462  
TCGA.CZ.5464  
TCGA.CZ.5468  
TCGA.CZ.5987