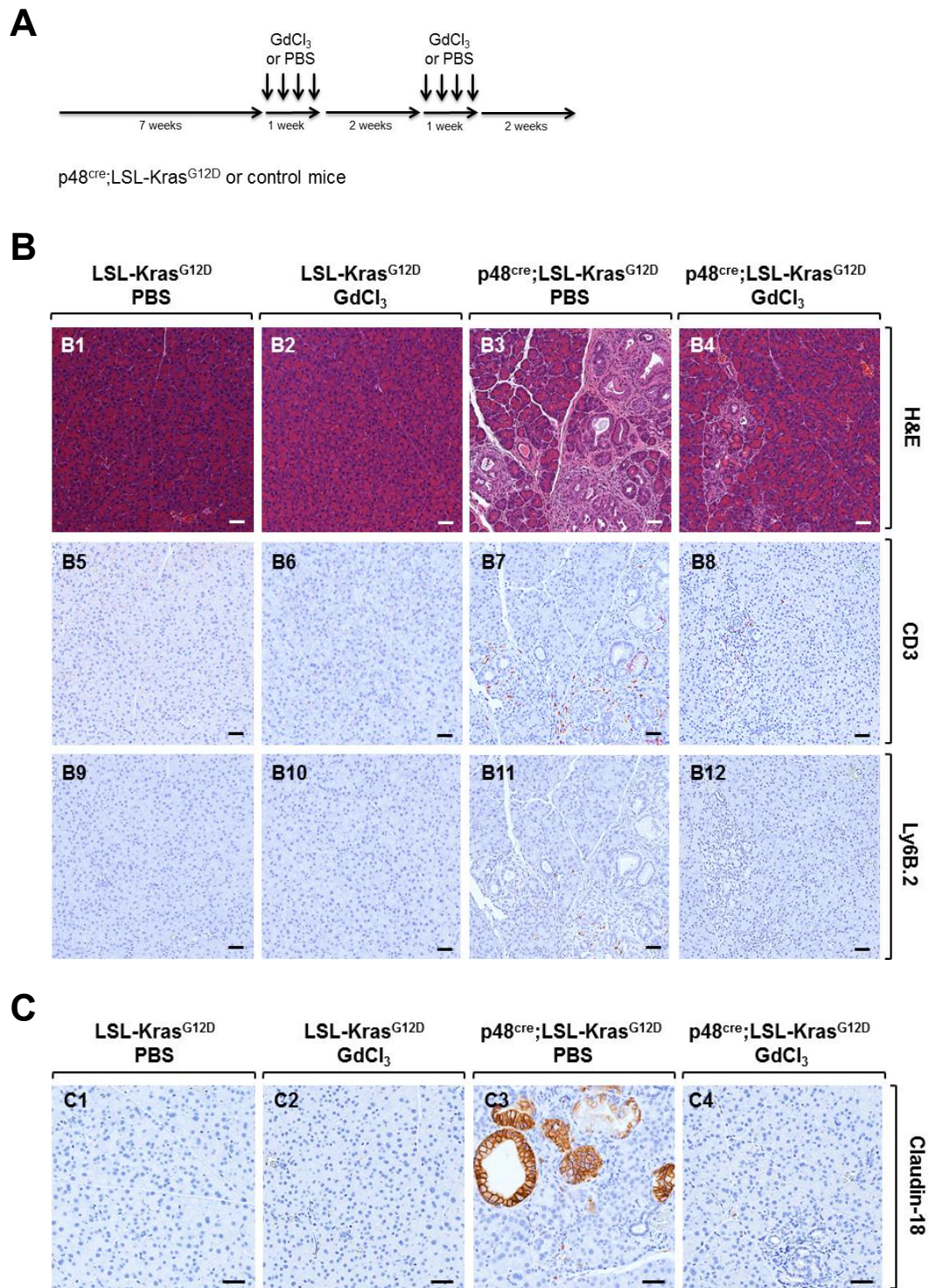


Supplementary Figure S1 shows the treatment scheme for GdCl₃ (A), and analysis of tissue for T-cells and neutrophils (B), or for presence of PanIN lesions (C).



Supplementary Figure S1. (A) Treatment scheme for Figure 1. **(B)** Control (ntg, p48^{cre} and LSL-Kras^{G12D} mice; shown are only LSL-Kras^{G12D} or p48^{cre};LSL-Kras^{G12D} mice were injected with GdCl₃ or PBS as indicated in (A). At the endpoint pancreata were harvested and either stained with H&E or analyzed by IHC for presence of CD3 positive (T-cells) or Ly6B.2 positive (neutrophils) cells. The scale bar is 50 μ m. **(C)** IHC staining of samples from Figure 1 for Claudin-18 expression (marker for PanIN lesions). The scale bar is 50 μ m.