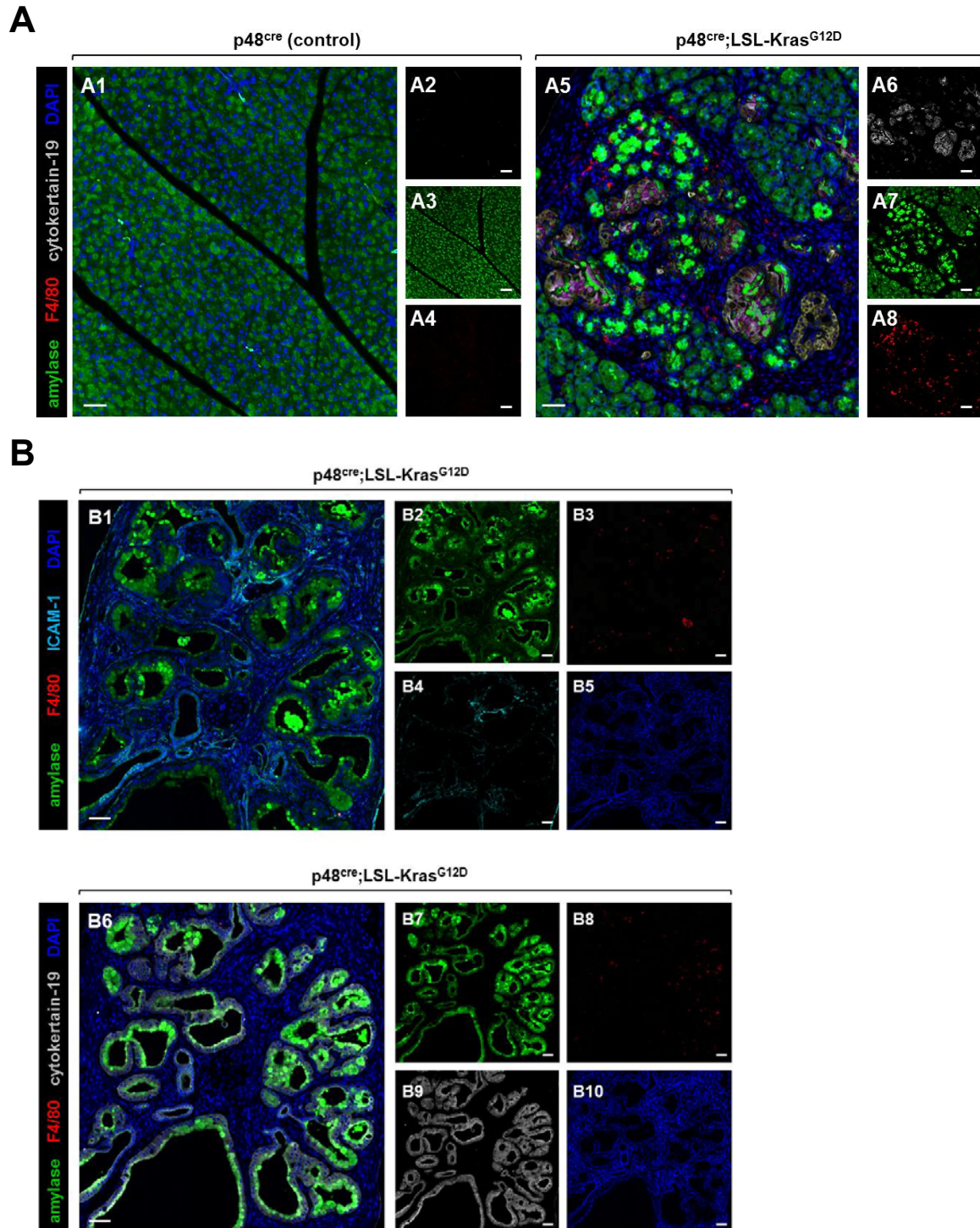


**Supplementary Figure S2 shows analysis for macrophages in cytokeratin-19 positive regions of ADM (A), and analysis for ICAM-1, macrophages and cytokeratin-19 in PanIN lesions (B).**



**Supplementary Figure S2. (A)** Pancreata of p48<sup>cre</sup>;LSL-Kras<sup>G12D</sup> or control (shown is p48<sup>cre</sup>) mice at week 14 were analyzed for expression of macrophage infiltration (F4/80), amylose expression (acinar cell marker) or cytokeratin-19 expression (ductal cell marker) using immunofluorescence labeling. DAPI marks the nuclei. Left side shows composite and right side single channels. The bar indicates 50  $\mu$ m. **(B)** Progressed PanIN area of p48<sup>cre</sup>;LSL-Kras<sup>G12D</sup> mice at week 14. Shown is an immunofluorescence analysis for expression of ICAM1, F4/80, amylose or cytokeratin-19. DAPI marks the nuclei. Left side shows composite and right side single channels. The bar indicates 50  $\mu$ m.