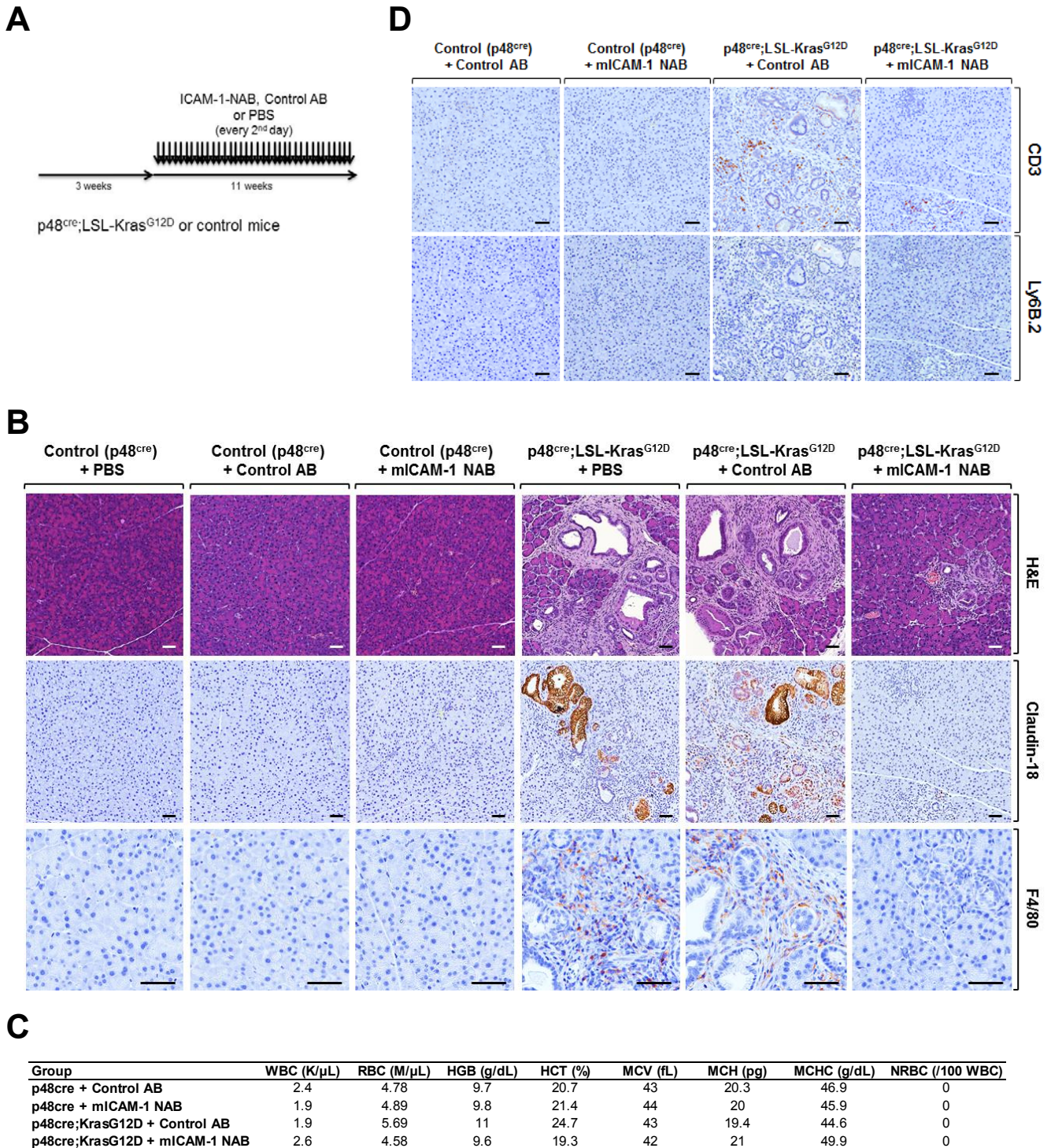


**Supplementary Figure S5 shows the treatment schedule (A), additional controls (B), basic complete blood count tests (C), and analysis for T-cells and neutrophils (D) for Figure 3F.**



**Supplementary Figure S5. (A)** Treatment scheme for Figure 3F. **(B)** Additional controls for Figure 3F. Scale bar indicates 50  $\mu$ m. **(C)** Blood analysis of indicated samples. Mouse blood was collected by cardiac puncture and stored in EDTA-treated collection tubes. Basic complete blood count tests were performed by IDEXX Laboratories (Westbrook, ME). Abbreviations: WBC, white blood cell; RBC, red blood cell; HGB, hemoglobin; HCT, hematocrit; MCV, the average volume of a red blood cell; MCH, the average amount of hemoglobin in the average red blood cell; MCHC, mean corpuscular hemoglobin concentration; NRBC, nucleated red blood cell. **(D)** Determination of CD3 positive and Ly6B.2-positive cells in indicated samples from Figure 3F. Scale bar indicates 50  $\mu$ m.