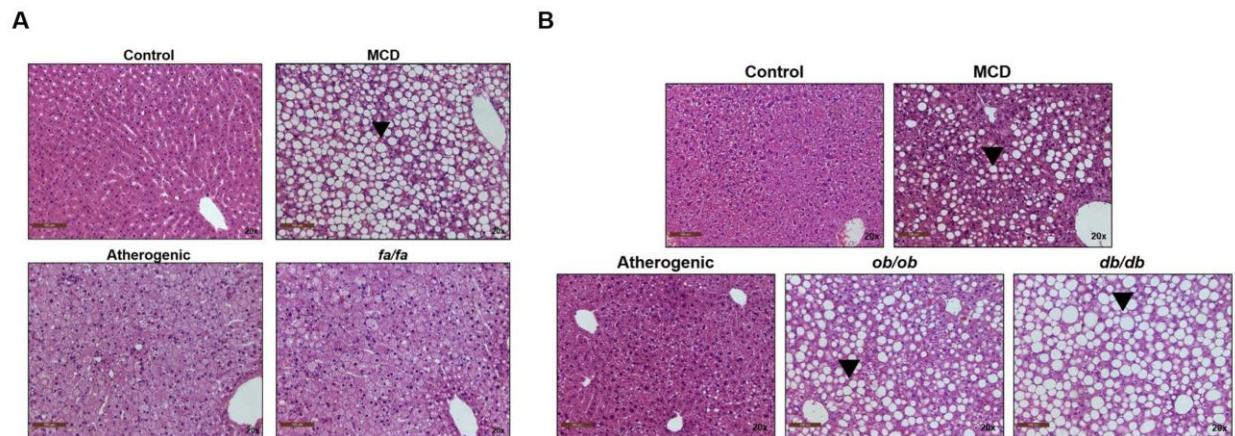


**Title: Renal Xenobiotic Transporter Expression is Altered in Multiple Experimental Models of Nonalcoholic Steatohepatitis**

Authors: Mark J. Canet, Rhiannon N. Hardwick, April D. Lake, Anika L. Dzierlenga, John D. Clarke, Michael J. Goedken, Nathan J. Cherrington

Journal Title: Drug Metabolism and Disposition

**Supplemental Figure 1**



*Figure 1. Liver Histology in Rodent NASH.* Representative hematoxylin and eosin stained liver sections from rat (A) and mouse (B) NASH models. Diffuse macrovesicular vacuoles are shown by the black arrowhead and represents a common pathological lesion in NASH. Images were taken at 20X magnification.