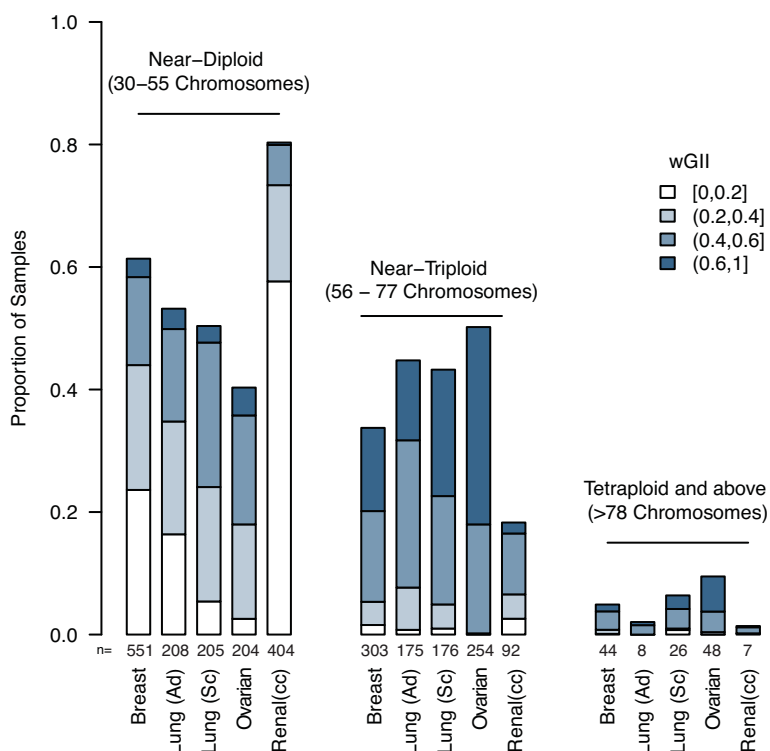
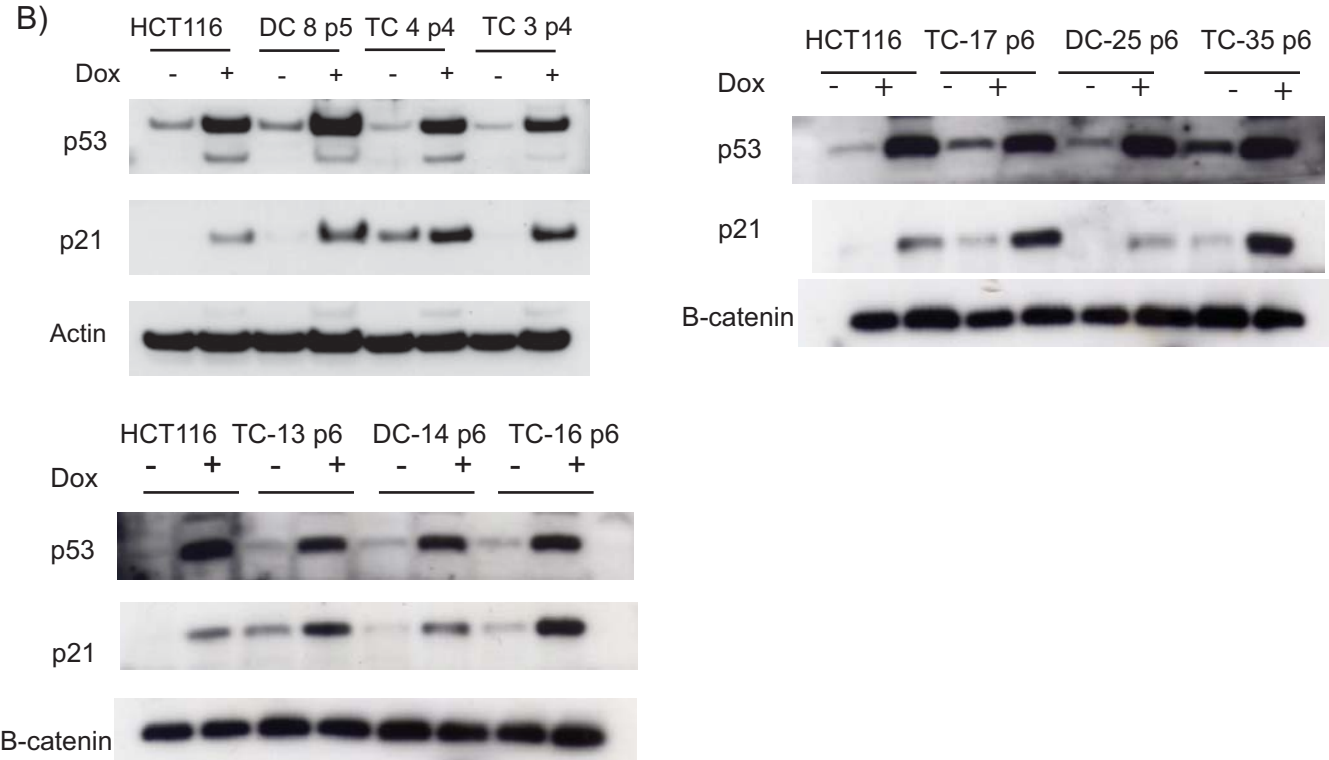


A)



B)

**Supplementary Figure 1**

**A)** Chromosome counts and wGII for different cancer types are shown. [Lung (Ad) = lung adenocarcinoma, Lung (Sc) = lung squamous cell carcinoma, Renal (cc) = clear cell renal cell carcinoma]. Chromosome counts for each sample represent the sum of modal copy numbers for each chromosome. N=number of tumours.

**B)** For all clones at early passage numbers western blots are shown showing activation of p53 and p21 after a 1hr treatment with Doxorubicin (Dox) or DMSO (indicated as +/-), followed by a 5-7hr recovery in normal media. Either Actin or  $\beta$ -catenin are shown as loading controls.

**Methods:** Cells were treated for 1hr with 1 $\mu$ M Doxorubicin (Sigma), before a 5-7hr recovery in normal media, and then lysed with 50 mM HEPES [pH 7.2], 150 mM NaCl, 1 mM EDTA, 20 mM NaF and complete protease inhibitors (Roche). Mouse primary antibodies: p53 (1:500, Santa Cruz sc-126),  $\beta$ -catenin (1:500, 610154-BD Biosciences), actin conjugated to HRP (1:10000, a3854, Sigma). Rabbit primary antibodies: p21 (1:1000, Cancer Research UK, Tim Hunt lab).