

Supplementary Table 1. Group differences in NK-1R BP identified with whole brain analyses

Region	Peak MNI Coordinates			Ke	Z-Value
	x	y	z		
Healthy Control > IBD					
Prefrontal Cortex					
Medial Frontal Gyrus	3	18	-20	625	3.79
Middle Frontal Gyrus	-29	51	-6	174	3.24
	33	-2	59	702	3.71
	-39	43	9	8285	4.15
Posterior Insula	-35	-15	-2	47207	4.89
Superior Frontal Gyrus	8	5	67	40	3.17
Parietal Lobe					
Posterior Cingulate Cortex	5	-56	21	17684	4.19
Precentral Gyrus	-29	-13	56	1581	3.90
Medial Frontal Gyrus	-5	-17	66	835	3.53
Temporal Lobe					
Fusiform Gyrus	30	-39	-17	96	3.29
	-35	-40	-25	469	3.61
Inferior Temporal Gyrus	58	-27	-22	403	3.67
Middle Temporal Gyrus	52	-56	-13	39	3.25
Superior Temporal Gyrus	44	8	-22	89095	4.93
Occipital Lobe					
Lingual Gyrus	19	-83	-8	21	3.16
	-24	-91	-5	714	4.23
Middle Occipital Gyrus	37	-86	-2	48	3.29
Striatum					
Caudate	26	-14	19	1225	3.60
Healthy Control > IBS					
Anterior Mid Cingulate Cortex	-8	27	28	355	3.67

$p < .001$, $ke > 20$

Figure S1. Scatter plot depicting the relationship between NK-1R availability in anterior insula and gastrointestinal symptom severity.

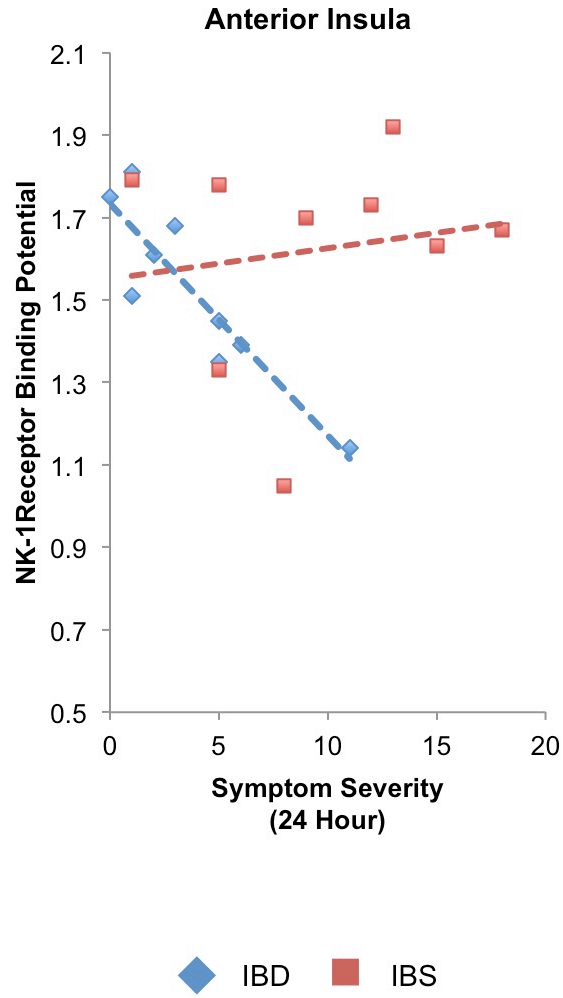


Figure S2. Scatter plot depicting the relationship between NK-1R availability in mid insula and duration of illness.

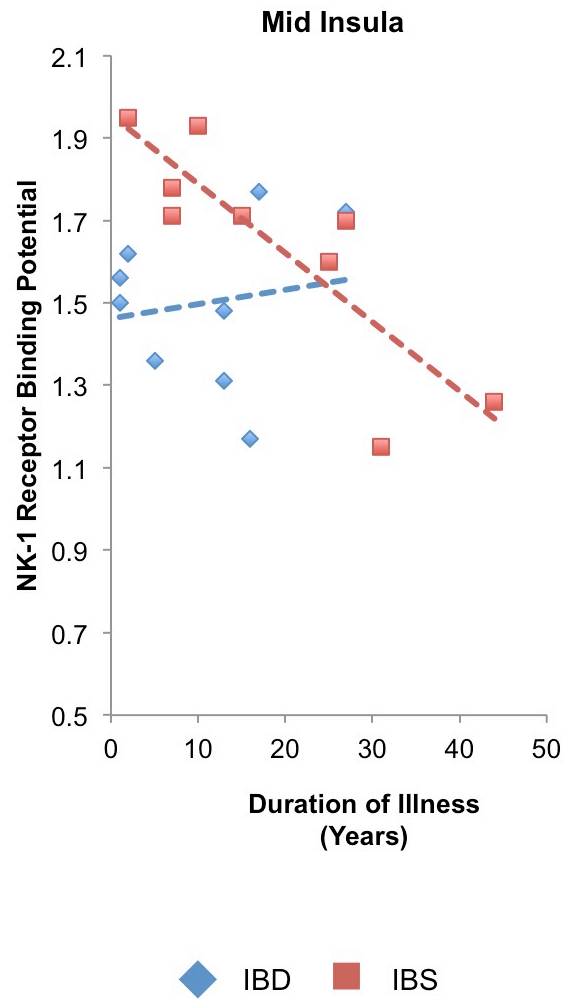


Figure S3. Scatter plot depicting the relationship between NK-1R availability in dorsolateral prefrontal cortex and pain threshold.

