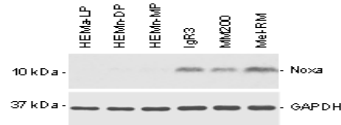


Noxa upregulation by oncogenic activation of MEK/ERK through CREB promotes autophagy in human melanoma cells

Supplementary Material



Supplementary Figure S1: Melanocyte lines of different origins express similarly lower levels of Noxa than melanoma cell lines. Whole cell lysates from HEMa-LP, HEMn-DP, HEMn-MP melanocytes and IgR3, MM200, Mel-RM melanoma cells were subjected to western blot analysis. Data shown are representative of three individual experiments.



Supplementary Figure S2: A schematic illustration of the bind sites of p53, CREB, and E2F at the Noxa promoter.

Supplementary Table S1: Summary of melanocytic tumors and their positivity for Noxa^a

Melanocytic tumors	Number	Noxa expression levels (IRS) ^b	% Noxa positive cells
Compound Nevus	10	4.2	41 ^c (21-65) ^d
Dysplastic Nevus	10	4.7	57 (17-90)
Thin Primary (<1mm Breslow depth)	20	5.7	60 (0-90)
Thick Primary (>1mm Breslow depth)	20	8.0	74 (40-97)
Lymph Node Metastases	20	7.9	82 (30-100)
Distant Metastases	20	10.0	72 (0-100)

^a The cohort of the melanocytic tumors used in this study was the same to that reported before (30).

^b IRS: Immunoreactive score.

^c Numbers stand for the mean percentage of positive cells.

^d Numbers in brackets represent the range of positive cells.