

Additional file 6. Phylogenetic classification of RLK/Pelles of *Platanus × acerifolia* (*Pac*). The analyses were based on the Neighbor-joining method and show a general view of the relationship of the aa sequences of RLK/Pelles of *Pac* (pac, ♦ in black), Pto group (♦ in red) and other kinases.

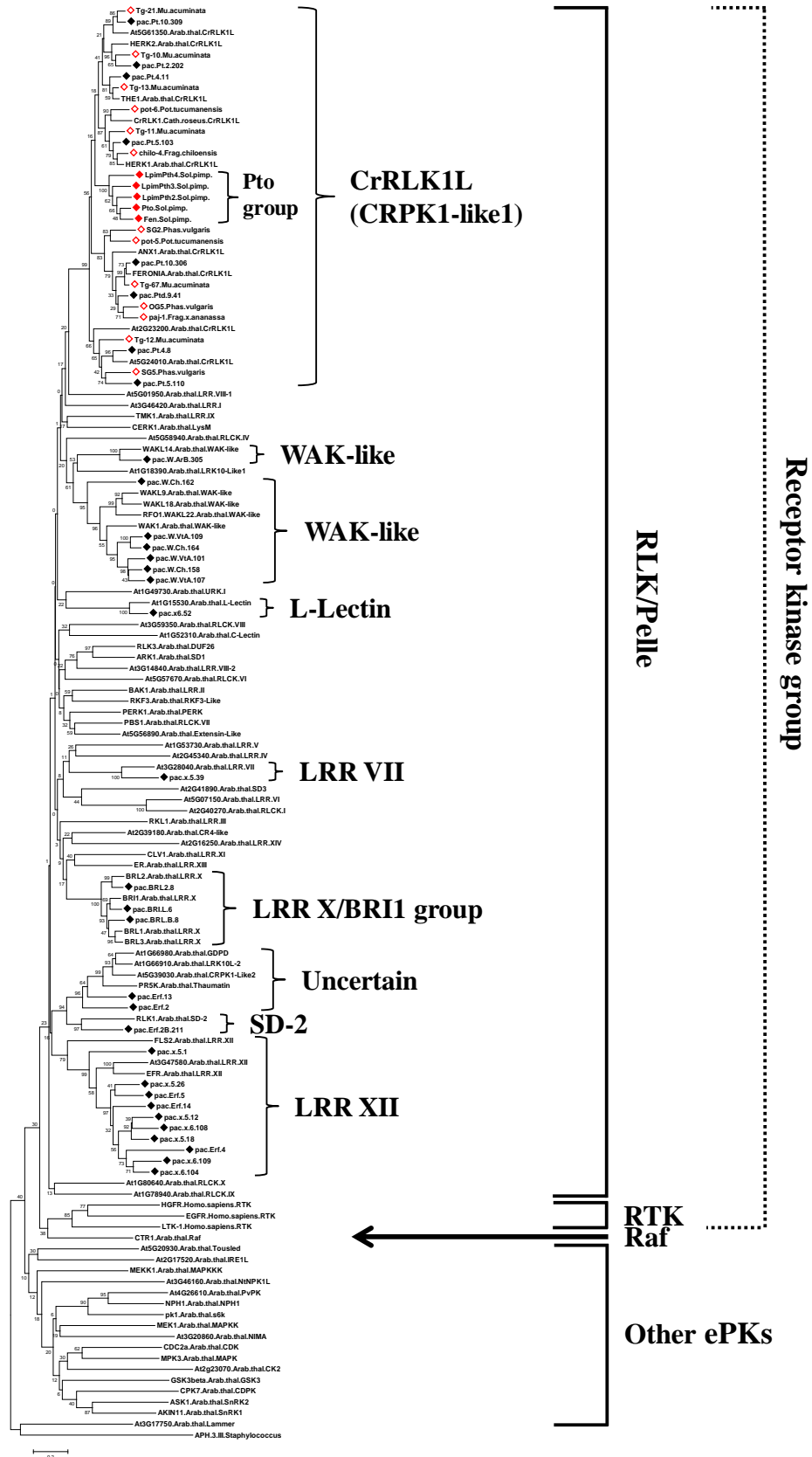
A. Contains representative sequences of the following species/groups: *Pac*, Pto group (red rhombus), Pto-like partial sequences from non-solanaceous species (white rhombus with a red outline), RLK/Pelle subfamilies of *Arabidopsis* [4], other families of the receptor kinase group – receptor tyrosine kinase (RTK) and Raf [3] - and other eukaryotic protein kinases (ePKs). The tree is rooted with a bacterial protein kinase [APH(3')III also named aminoglycoside 3'-phosphotransferase].

B. Contains all *Pac* sequences reported in this work and their strict *Arabidopsis* homologs according to what emerged from A.

A kinase domain region spanning subdomains I/II to the beginning of VIII, was used to infer the trees.

See caption of Figure 1 and Methods for details on the representation of the trees.

A



B

