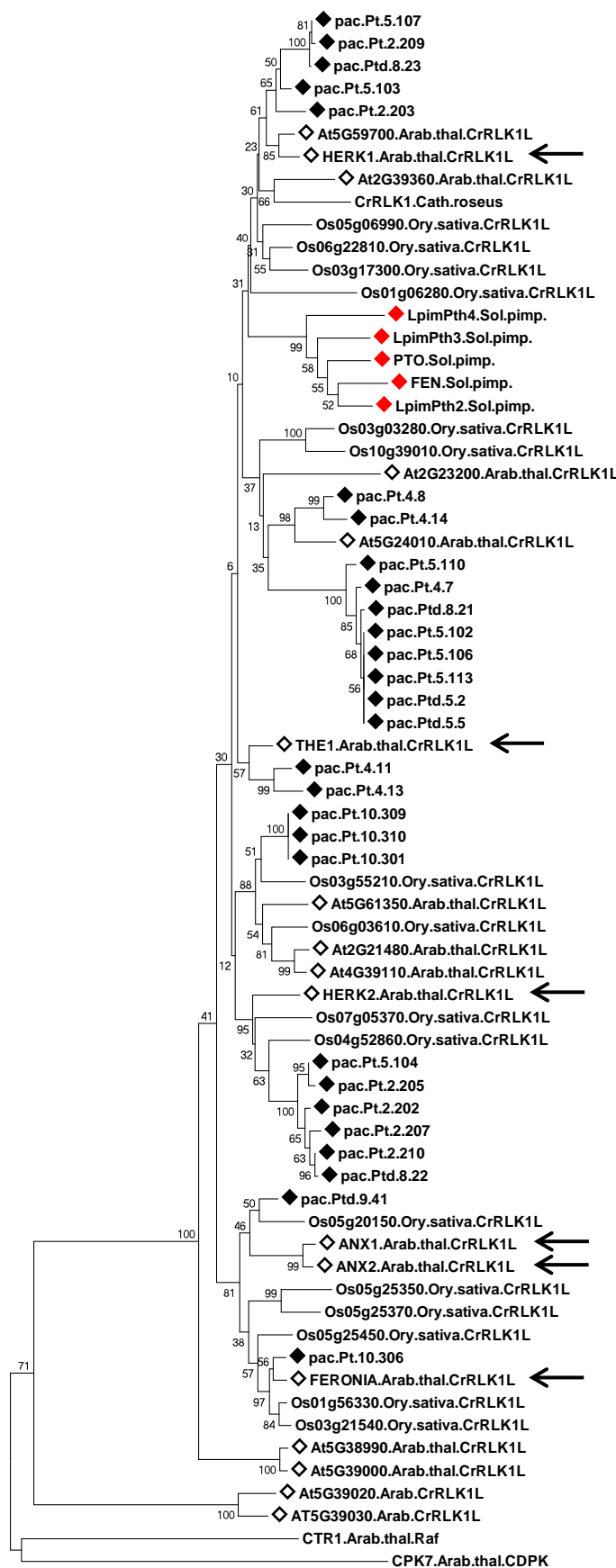


Additional file 7. The CrRLK1L-L of *Platanus × acerifolia* (*Pac*). Neighbor-joining analysis to compare CrRLK1L-L of *Pac* (pac, ♦), with the complete CrRLK1L subfamily of *Arabidopsis* and rice; Pto and paralogs of *Solanum pimpinellifolium* were also included (red rhombus); The subdivision into CRPK1-like 1 and CRPK1-like 2 is from Shiu and Bleecker [4]. aa sequences were used to infer the tree. Analysis was based on the kinase domain region spanning subdomain I through to IX. See caption of Figure 1 for details on the representation of the tree. Arrows indicate *Arabidopsis* CrRLK1L which were functionally characterised.



T

CRPK1-like1 (Shiu and Blecker 2003)

CRPK1-like2 (Shiu and Blecker 2003)

0.1