

Figure S3: PACT Center-3 Flow analysis for Products A-E

Products 3A.1, 3A.2, 3B, 3C, 3D.1, 3D.2, 3E (Figure S3a) and products 3D.1, 3D.2, and 3E (Figure S3b) were analyzed by flow cytometry for expression of cellular markers for mesenchymal stromal cell phenotype. The RSP5 reference standard was included in this analysis to monitor and control for assay-to-assay variability. The percentage of cell surface marker expression was low for CD14, CD19, CD34, CD45, and HLA-DR (MHC Class II) and >95% for CD73, CD90, CD105, and HLA-ABC (MHC Class I).

Figure S3a:

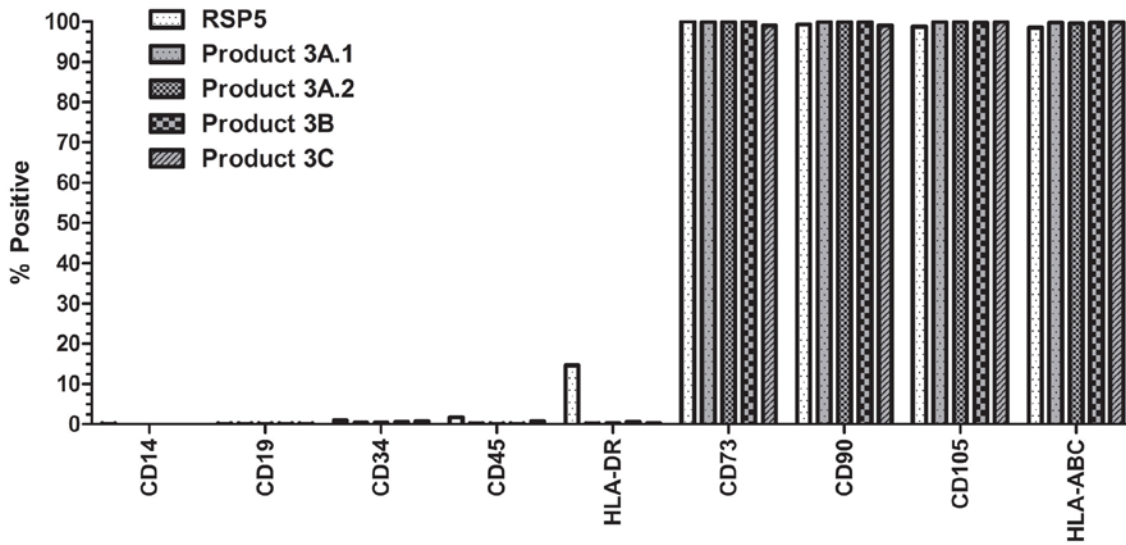


Figure S3b:

