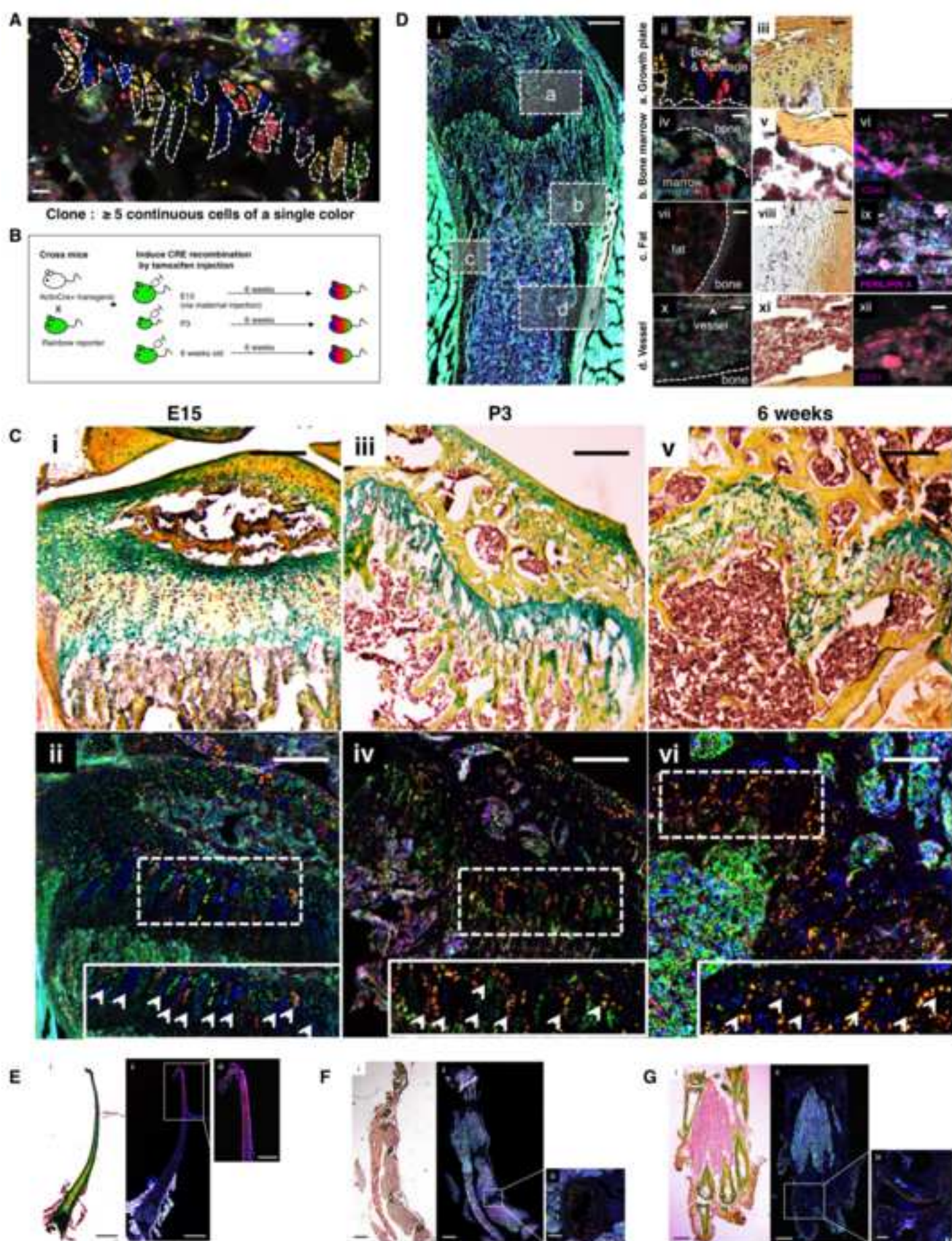
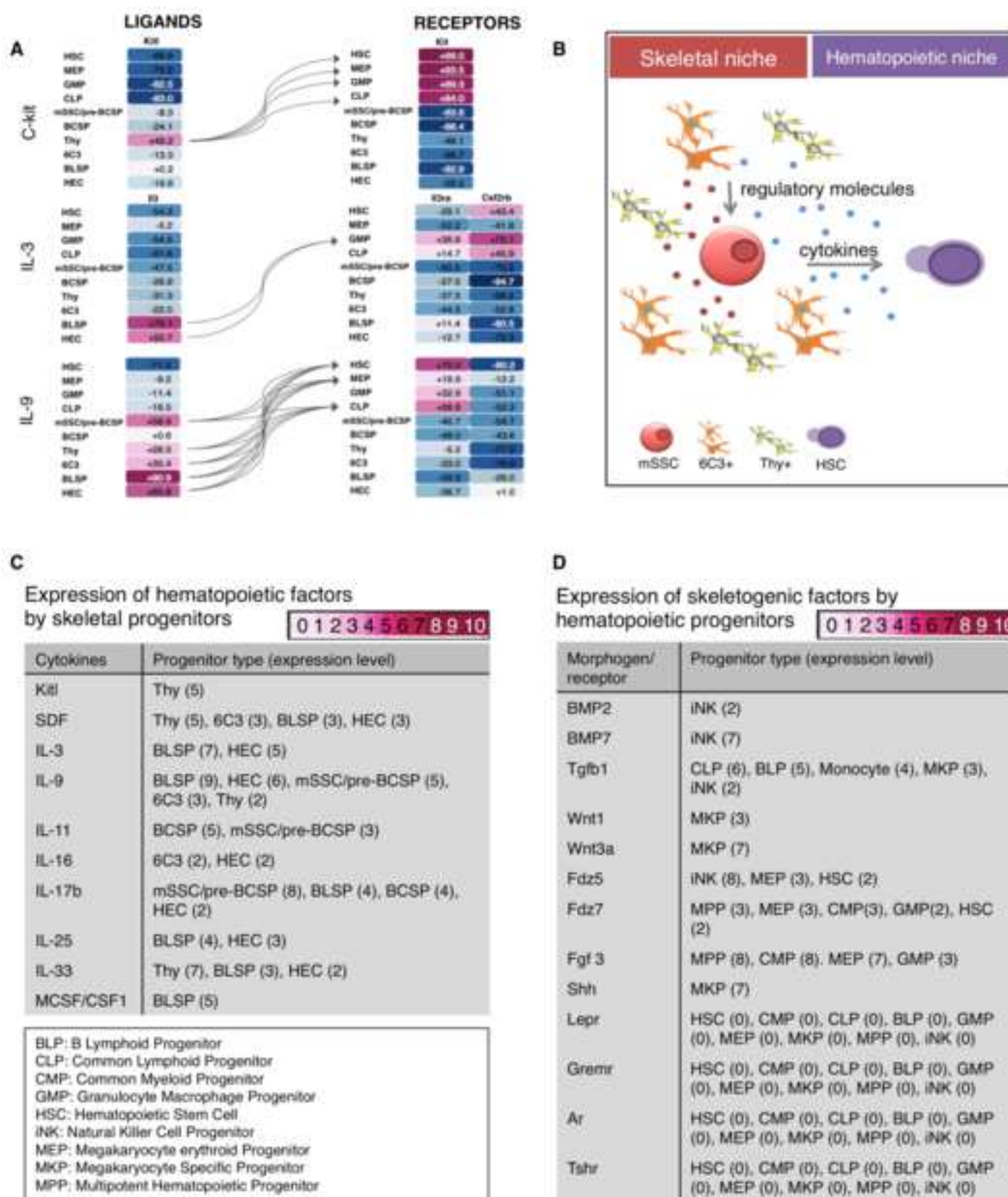
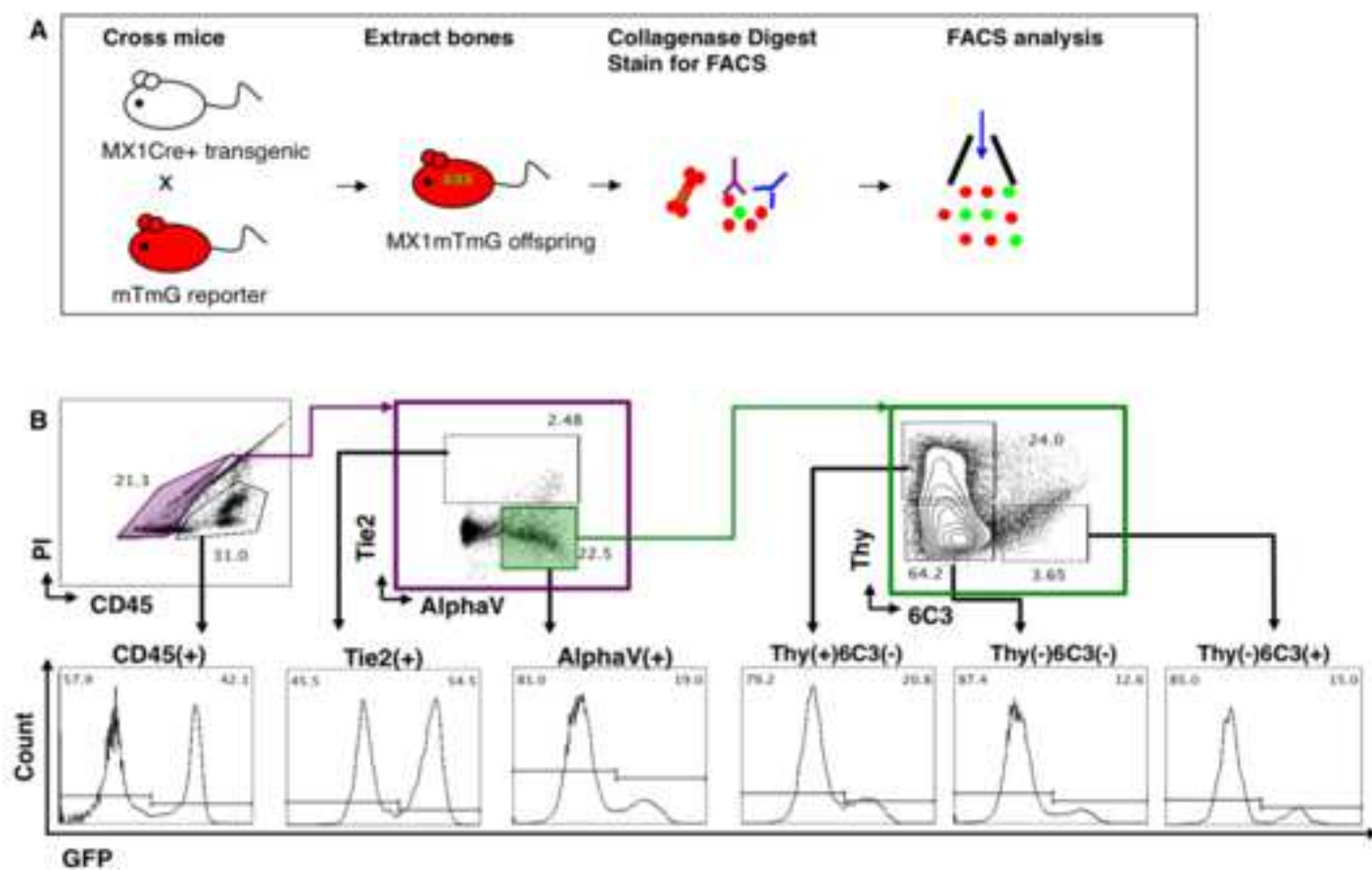


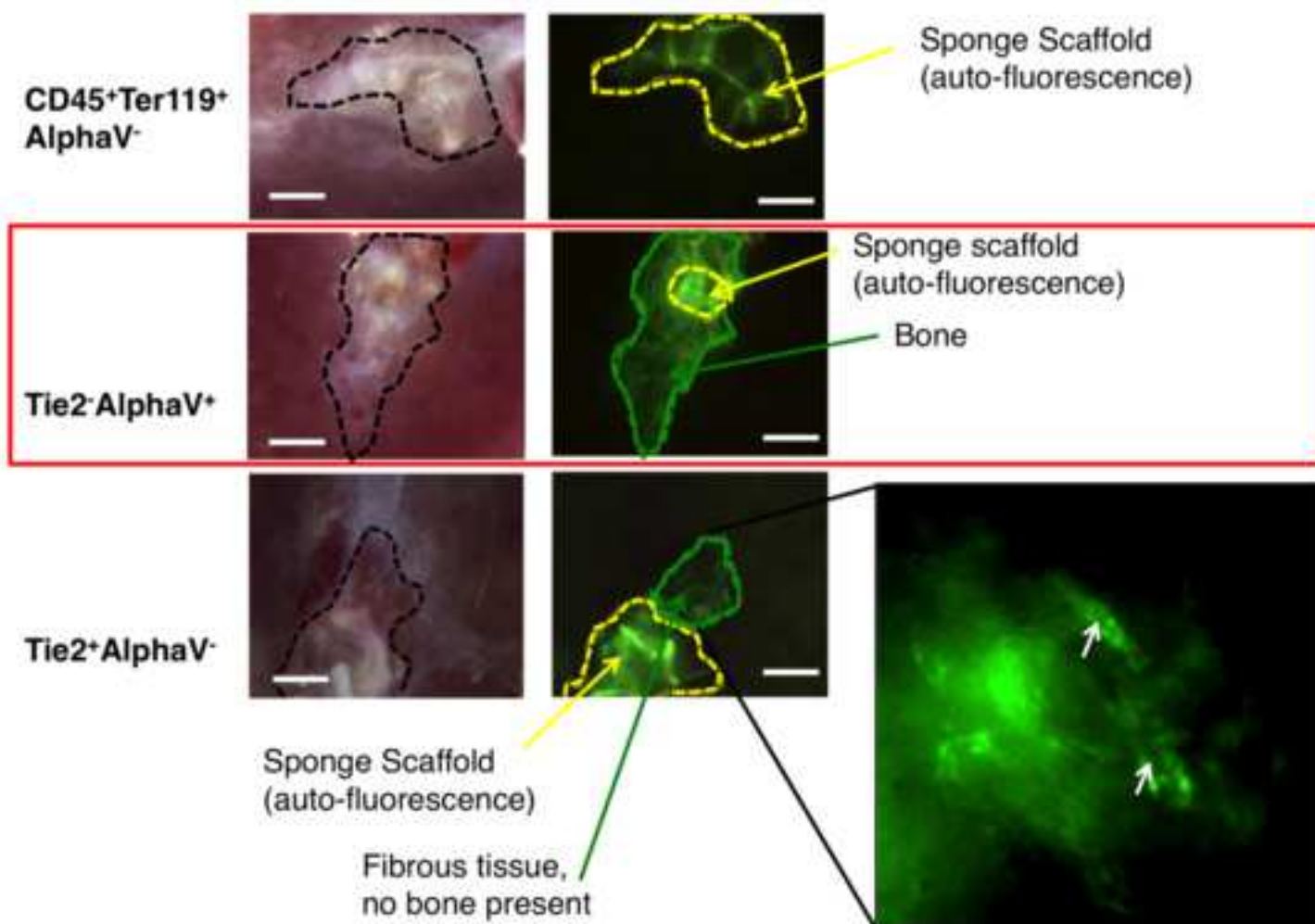
Supplementary Figure 1: Post-natal clonal expansions are restricted to bone and cartilage.

Supplementary figure 2: Cognate ligand / receptor expression in bone marrow subsets.

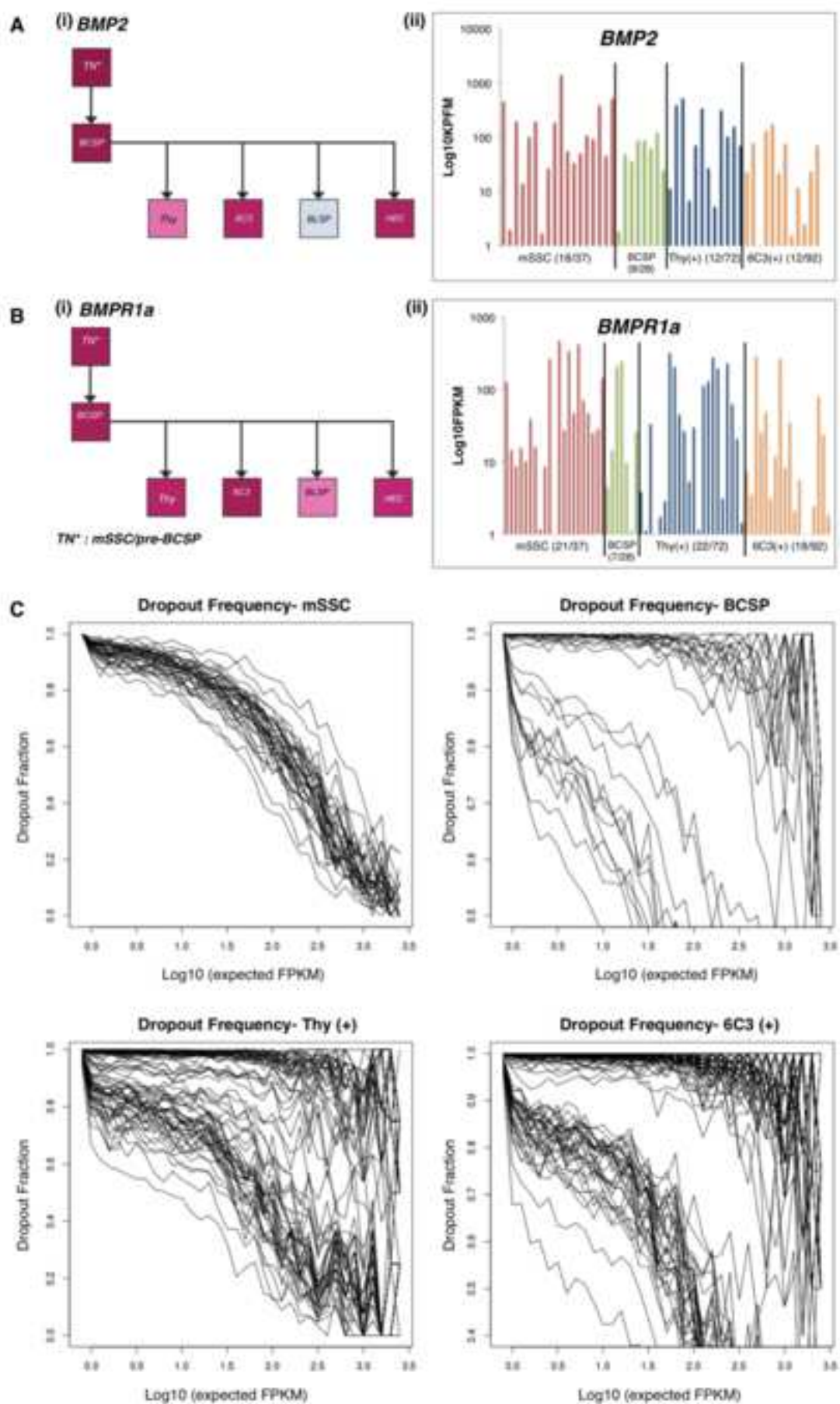


Supplementary Figure 3: MX1-Cre labeled cells encompass the mSSC population.



Supplementary figure 4: Skeletogenic population is specific to the [AlphaV+] subset.

Supplementary figure 5: Single cell RNA sequencing reveals co-expression of BMP2 and its receptor in mSSCs.



Supplementary figure 6: Injury induces local mSSC expansion.

