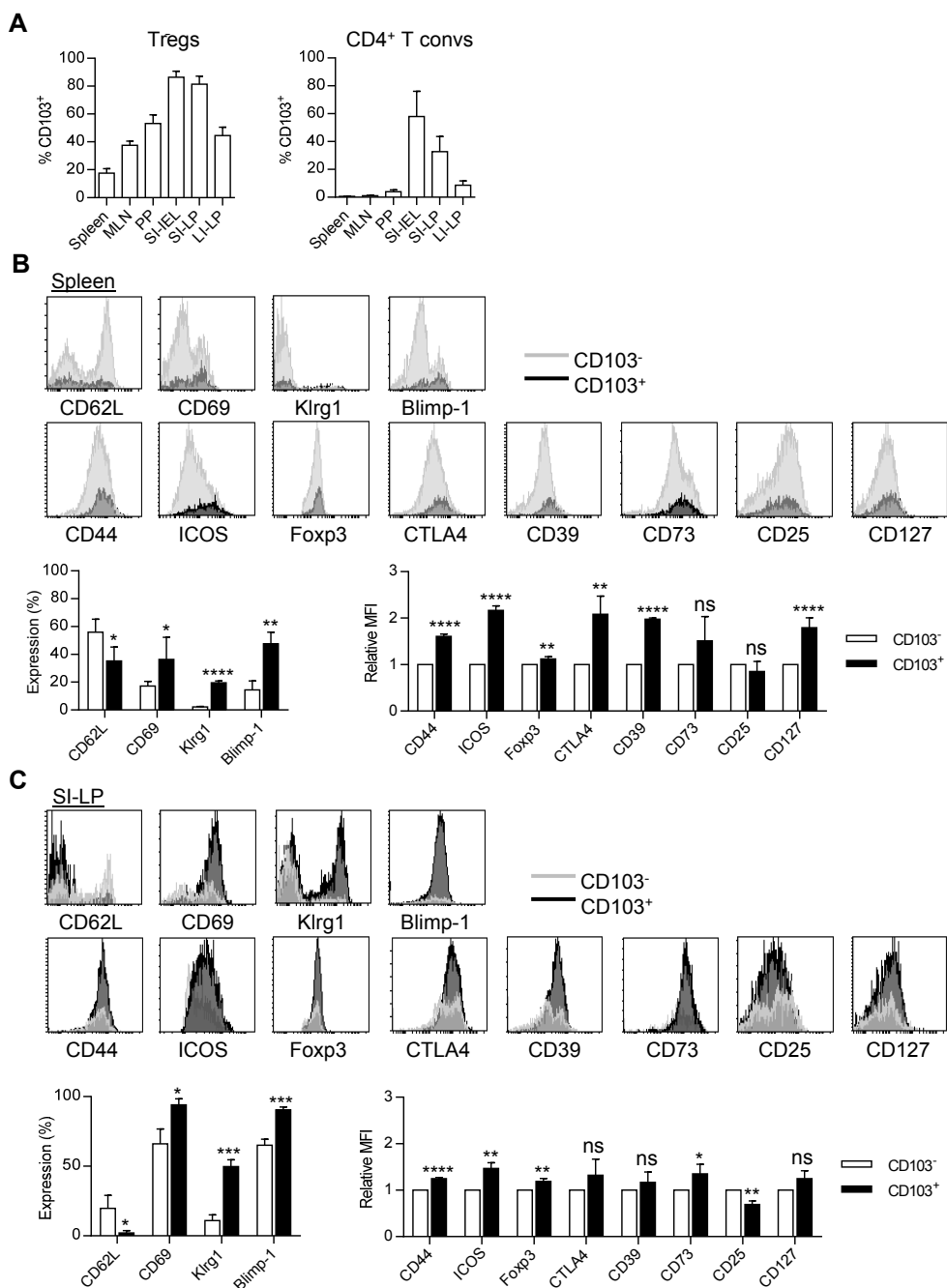
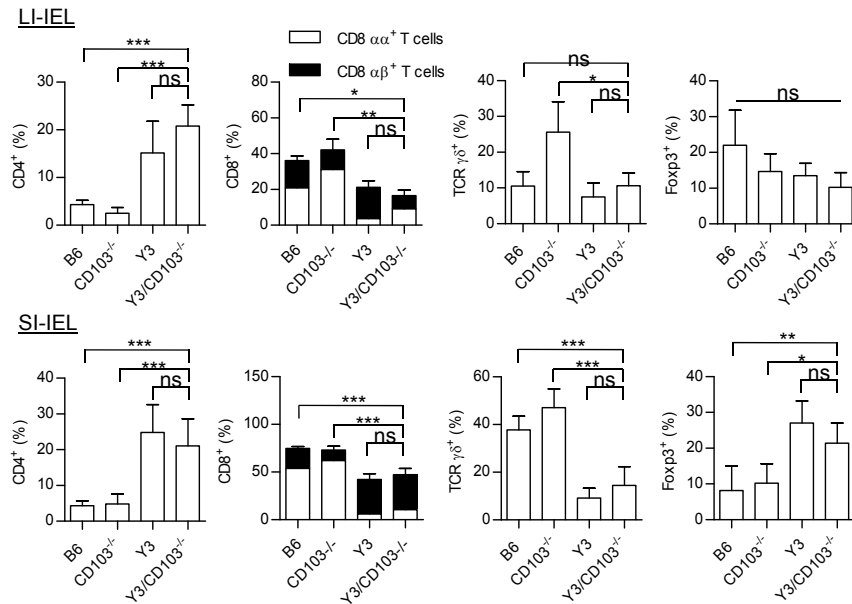


Supplemental Figure 1



Supplemental Figure 1. **The comparison of CD103⁻, CD103⁻ Treg subsets.** (A) The proportion of CD103⁺ Tregs and CD103⁺ CD4⁺ Foxp3⁻ T conventional cells (T convs) in various tissues from WT mice were assessed by flow cytometry (n = 3-9 mice). (B, C) CD103⁻ and CD103⁺ Tregs from spleen (B) and SI-LP (C) of WT mice were analyzed for the expression of marks as indicated and the percent of expression or relative mean fluorescence intensity (MFI) was determined by flow cytometry. The expression of Blimp-1 in Tregs was measured according to the GFP expression from Blimp-1/GFP/Foxp3/RFP reporter mice. The relative MFIs of CD103⁻ and CD103⁺ Tregs were normalized to CD103⁻ Tregs (n = 3-5 mice).

Supplemental Figure 2



Supplemental Figure 2. **T cell profile in the IEL compartment of the small and large intestine.** The proportion of CD4⁺ T cells, CD8 αα⁺ T cells, CD8 αβ⁺ T cells, TCR γδ⁺ and CD4⁺ Foxp3⁺ Tregs in the IEL compartment of small (n = 5-7 mice) and large intestine (n = 4-5 mice) was determined by flow cytometry. Age-matched 12-24 week-old mice were assessed for each genotype.