

A closer look at the apparent correlation of structural and functional connectivity in excitable neural networks

Arnaud Messé,^{1,*} Marc-Thorsten Hütt,² Peter König,³ and Claus C. Hilgetag^{1,4}

¹*Department of Computational Neuroscience, University Medical Center Eppendorf, Hamburg University, Germany*

²*School of Engineering and Science, Jacobs University Bremen, Germany*

³*Department of Cognitive Science, University Osnabrück, Germany*

⁴*Department of Health Sciences, Boston University, USA*

* Correspondence to a.messe@uke.de

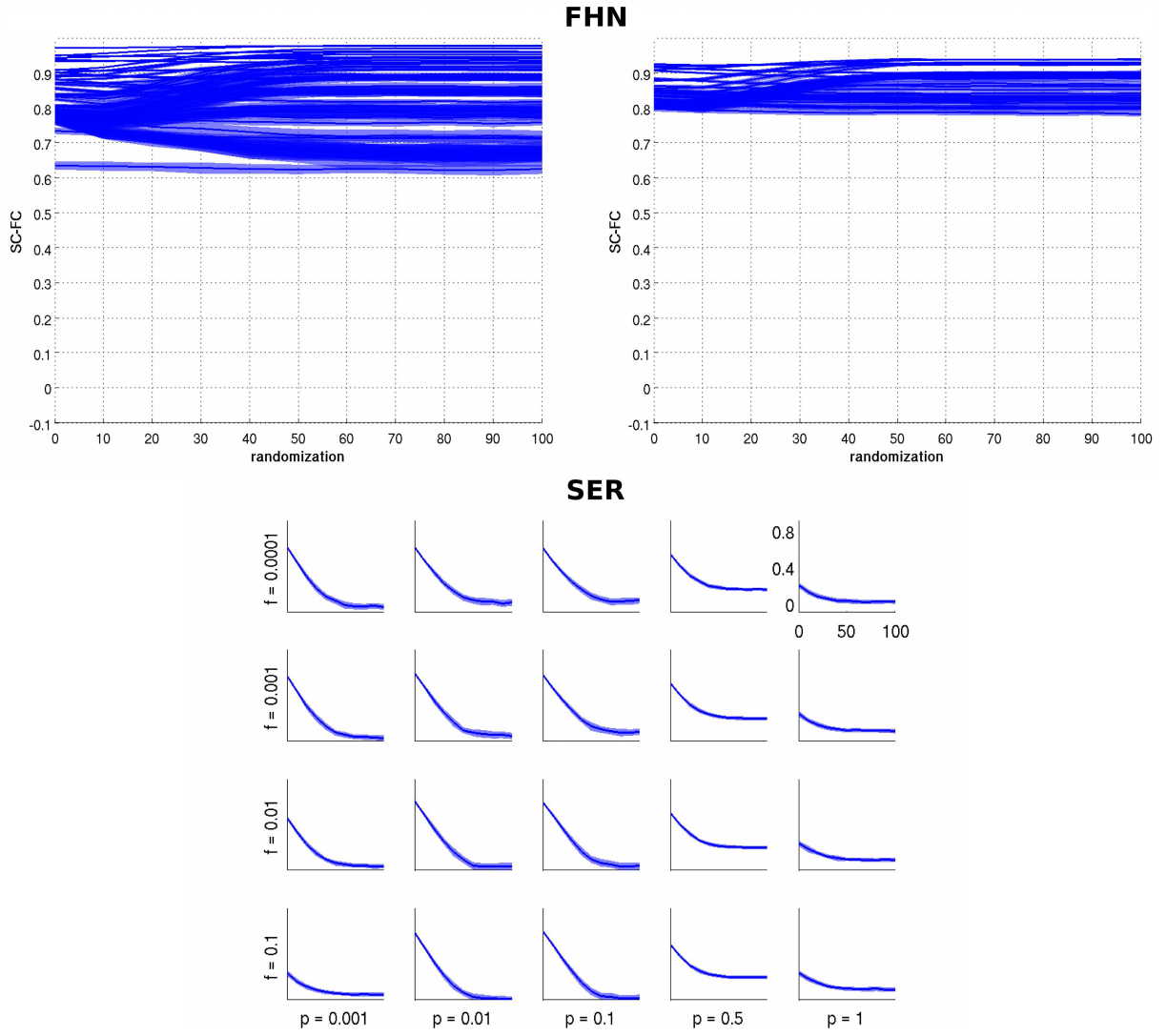


FIG. S1. **Robustness of the SC-FC relationship against parameters setting.** (Top) For the FHN model with various timescales (left, with $\tau_x \in \{.2, .4, .8, 2, 4, 8, 16\}$ ms and $\tau_y \in \{2, 10, 20, 50, 100, 200, 500\}$ ms) and various α and β (right, from .2 to 1.4 by step of .2). (Bottom) For the SER with various f (rows) and p (columns).