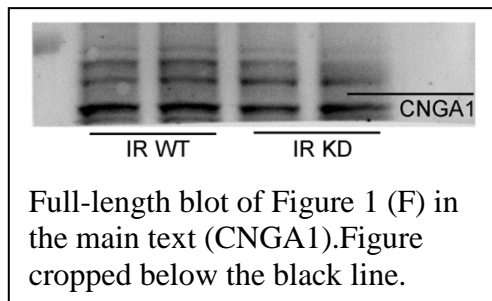
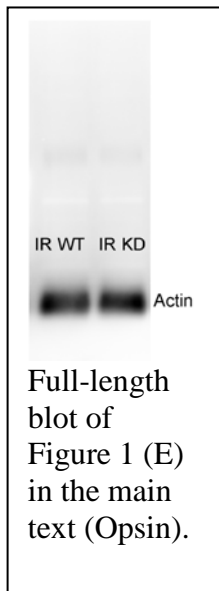
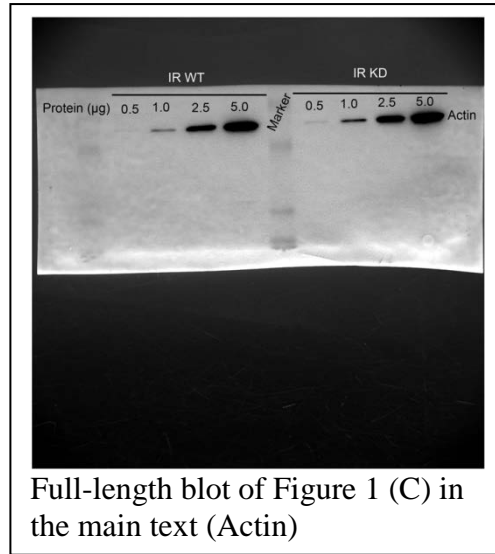
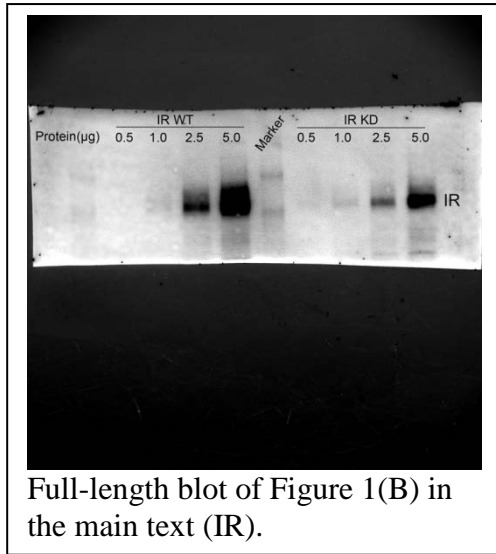


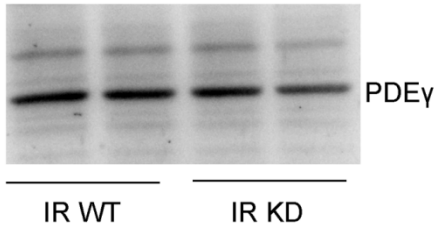
Effect of Knocking Down the Insulin Receptor on Mouse Rod Responses

Michael L. Woodruff[§], Ammaji Rajala[¶], Gordon L. Fain^{§#}, Raju V. S. Rajala^{¶§1},

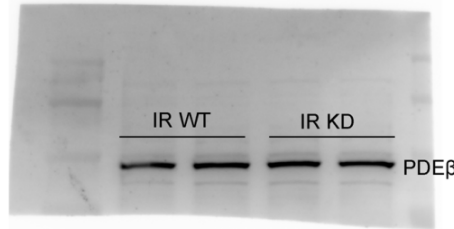
From the [§]Department of Integrative Biology and Physiology, University of California Los Angeles, Los Angeles, California, 90095-7239, the Departments of [¶]Ophthalmology, [§]Physiology and ¹Cell Biology, University of Oklahoma Health Sciences Center, Oklahoma City, Oklahoma 73104, and the [#]Department of Ophthalmology and Jules Stein Eye Institute, University of California Los Angeles, Los Angeles, California, 90095-7000.

Supplementary Figure 1:

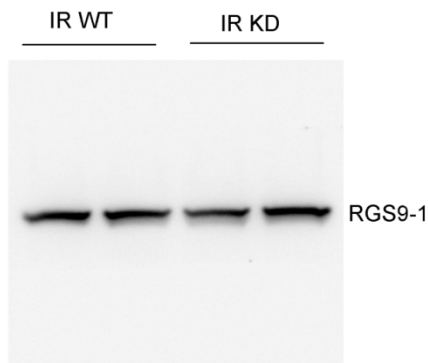




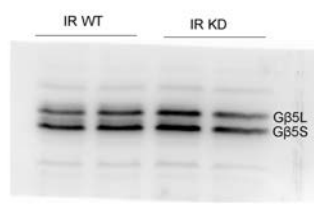
Full-length blot of Figure 1 (G) in the main text (PDE γ).



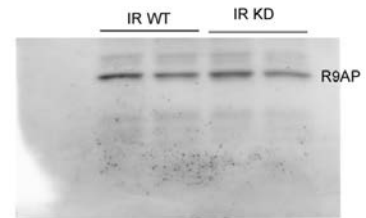
Full-length blot of Figure 1 (H) in the main text (PDE β).



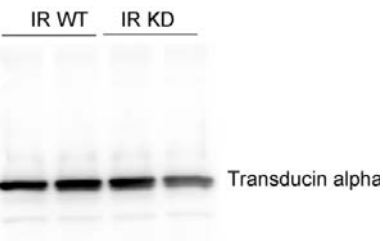
Full-length blot of Figure 1 (I) in the main text (RGS9-1).



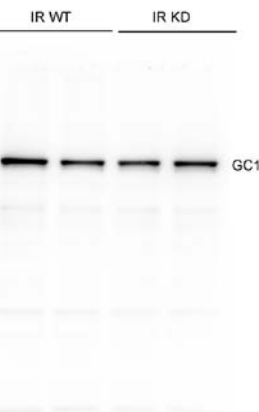
Full-length blot of Figure 1 (J) in the main text (G β 5L and G β 5S).



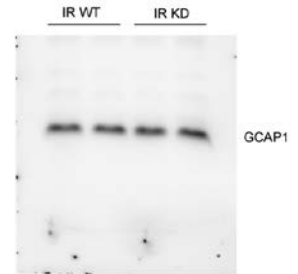
Full-length blot of Figure 1 (K) in the main text (R9AP).



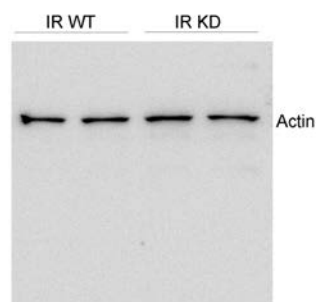
Full-length blot of Figure 1 (L) in the main text (Transducin alpha).



Full length blot of Figure 1 (M) in the main text (GC1).

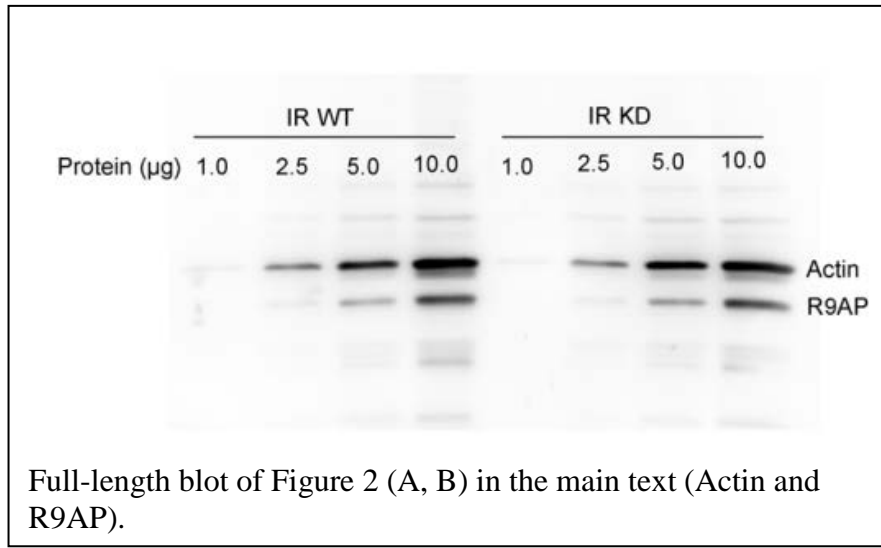


Full-length blot of Figure 1 (N) in the main text (GCAP1).

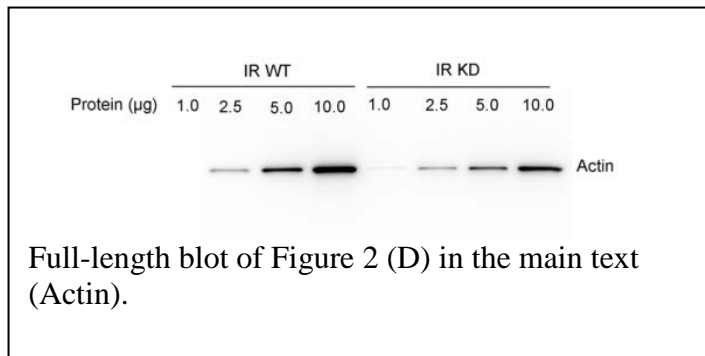


Full length blot of Figure 1 (O) in the main text (Actin).

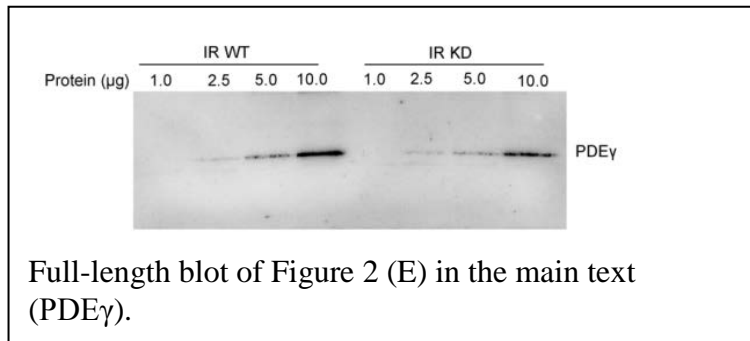
Supplementary Figure 2:



Full-length blot of Figure 2 (A, B) in the main text (Actin and R9AP).



Full-length blot of Figure 2 (D) in the main text (Actin).



Full-length blot of Figure 2 (E) in the main text (PDE γ).