

Figure S1 Jeong YH et al.

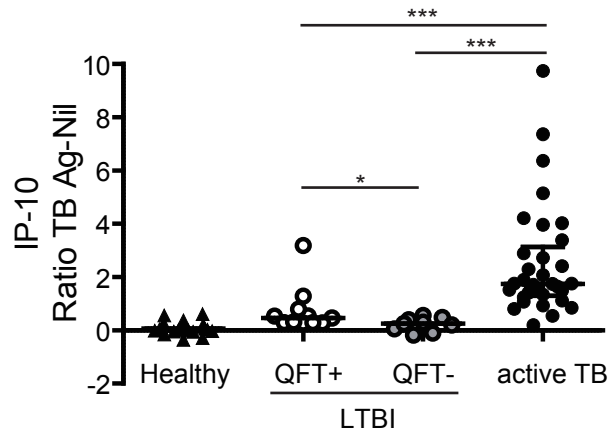


Figure S1. Ratio of TB-specific to mitogen-induced responses. Whole blood was stimulated with *M. tb*-specific antigen (ESAT-6, CFP-10 and TB7.7) or with mitogen for 24 h and the levels of TB-specific and mitogen-induced IP-10 was measured in active TB patients, LTBI and non-TB healthy control. LTBI group was divided into QFT positive and QFT negative to compare the responses *P < 0.05; **P < 0.01; ***P < 0.001.

Table S1. Optimal cutoff values with associated sensitivity and specificity to discriminate between active TB and LTBI who are positive to both TST and QFT

Analytical criteria	Target	Cutoff	Sensitivity (%)	Specificity (%)
TB Ag	IL-13	4.880	78.79	63.64
	IFN- γ	173.5	93.94	36.36
	IP-10	19566	72.73	90.91
TB Ag/mitogen ratio	IL-13	0.03945	78.79	72.73
	IFN- γ	0.04135	90.91	54.55
	IP-10	0.7980	93.94	81.82