

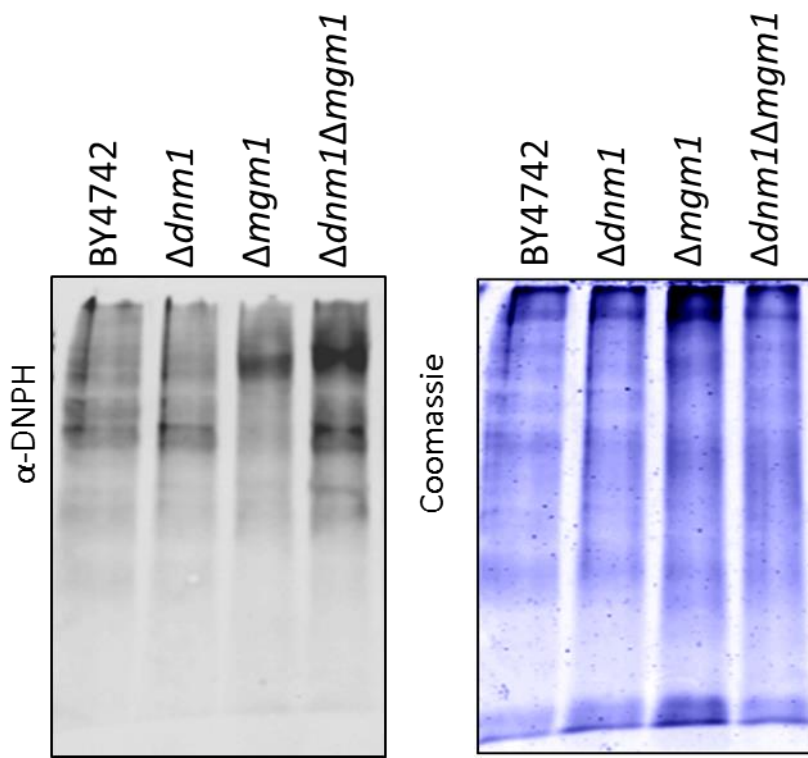
## **Simultaneous impairment of mitochondrial fission and fusion reduces mitophagy and shortens replicative lifespan**

Dominik Bernhardt<sup>1</sup>, Matthias Müller<sup>2</sup>, Andreas S. Reichert<sup>2,3</sup>, Heinz D. Osiewacz<sup>1</sup>

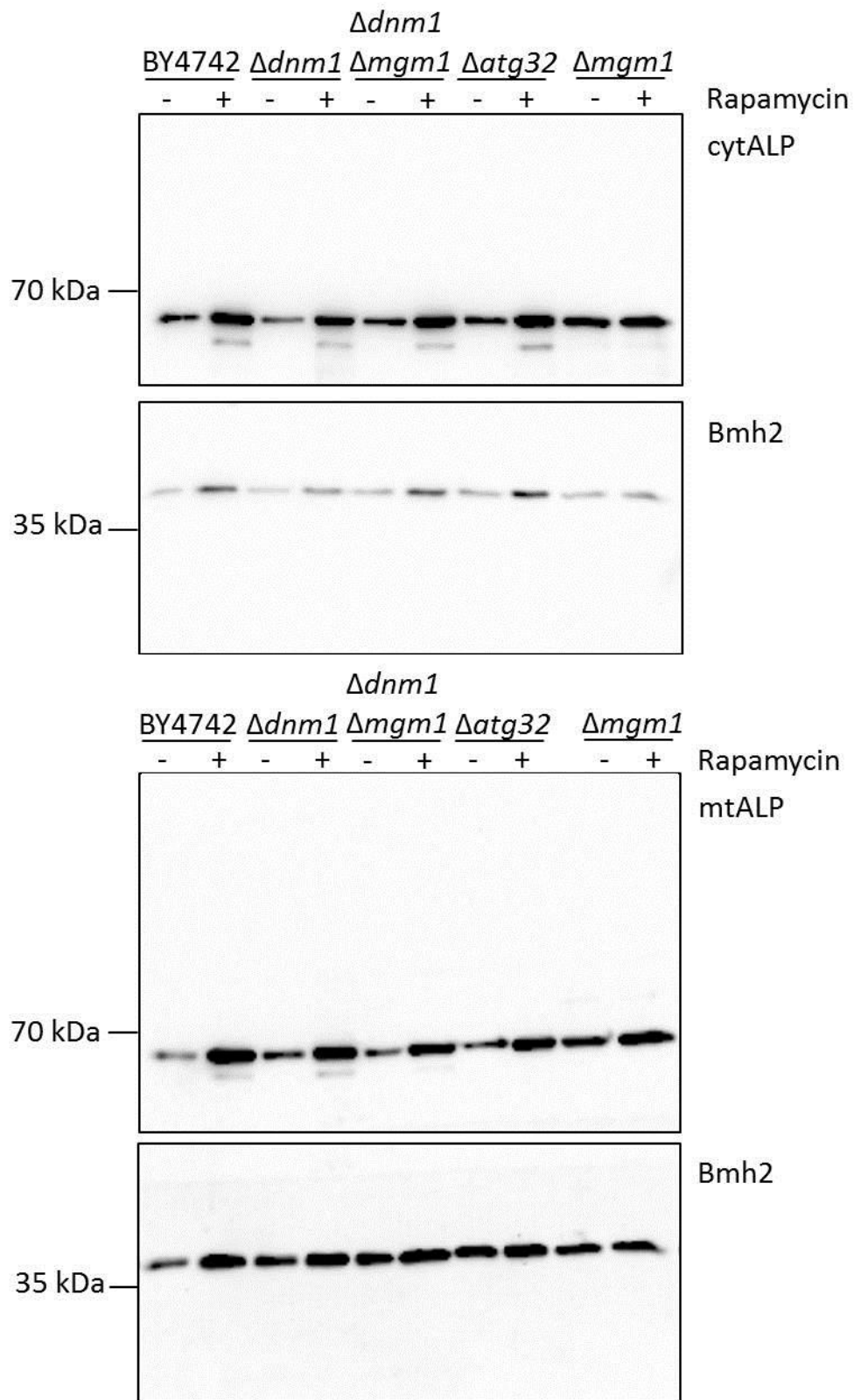
<sup>1</sup>Goethe University, Faculty for Biosciences & Cluster of Excellence, 'Macromolecular Complexes' Frankfurt, Institute of Molecular Biosciences, Max-von-Laue-Straße 9, 60438 Frankfurt, Germany. Correspondence and requests for materials should be addressed to H.D.O. (email: [Osiewacz@bio.uni-frankfurt.de](mailto:Osiewacz@bio.uni-frankfurt.de))

<sup>2</sup>Mitochondrial Biology, Buchmann Institute for Molecular Life Sciences & Zentrum für Molekulare Medizin, Goethe University, Max-von-Laue-Straße 15, 60438 Frankfurt am Main, Germany.

<sup>3</sup>Heinrich-Heine Universität, Universitätsklinikum Düsseldorf, Institut für Biochemie und Molekularbiologie I, Universitätsstr. 1, 40225 Düsseldorf



Supplementary Figure 1: Uncropped version of figure 5 c.



Supplementary Figure 2: Uncropped version of figure 6 a, b.