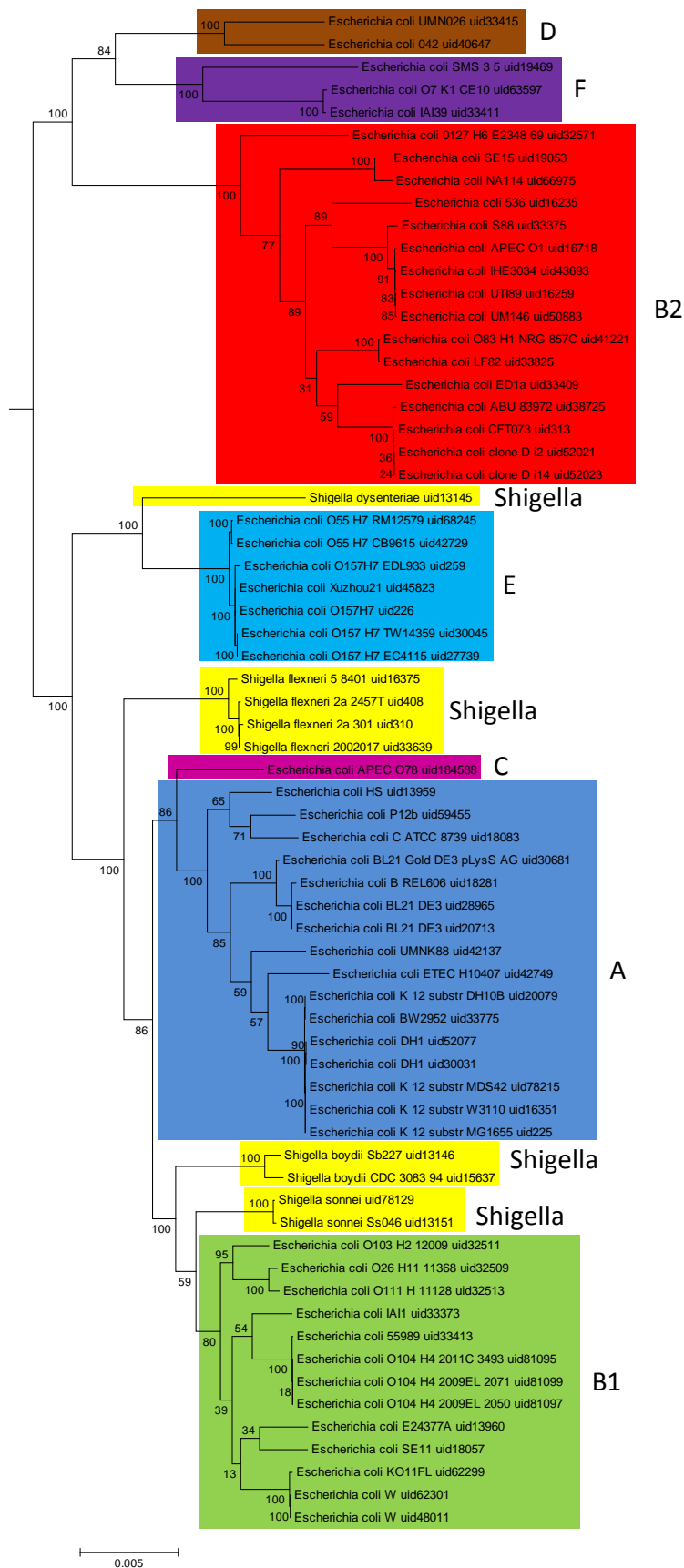


Additional File 3. Phylogenetic tree with bootstrap support



This tree shows the same principle divisions between the phylogroups as shown by the tree in figure 1 a. By using a subset of isolates, we were able to perform bootstrapping which shows that the divisions in the tree are well supported. 100 Bootstrap replicates were performed. The tips of the tree are coloured according to phylogroup, with all *Shigella* coloured yellow.