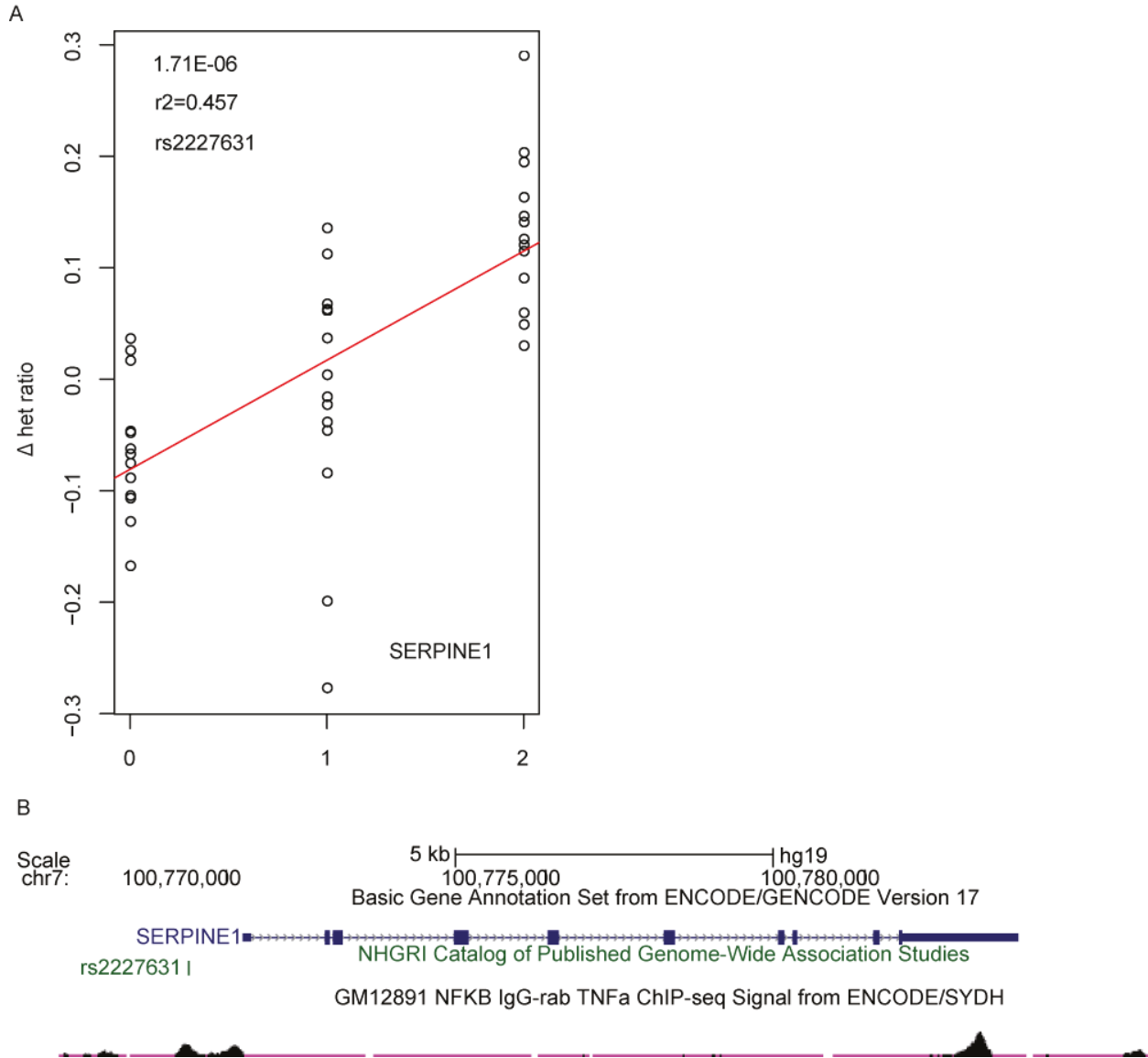


Figure S9. Example of disease associated SNP linked to differential AE of target gene through NFkB action.

(A) AE linear regression graph. (B) SERPINE1 locus.



Mapped rs2227631 show strong association with differential AE of SERPINE1 ($P=1.71 \times E-06$ in CEU population). It has been shown as linked to circulating plasminogen activator inhibitor-1 (PAI-1) concentration and sit on an NFkB ChIP-seq peak.