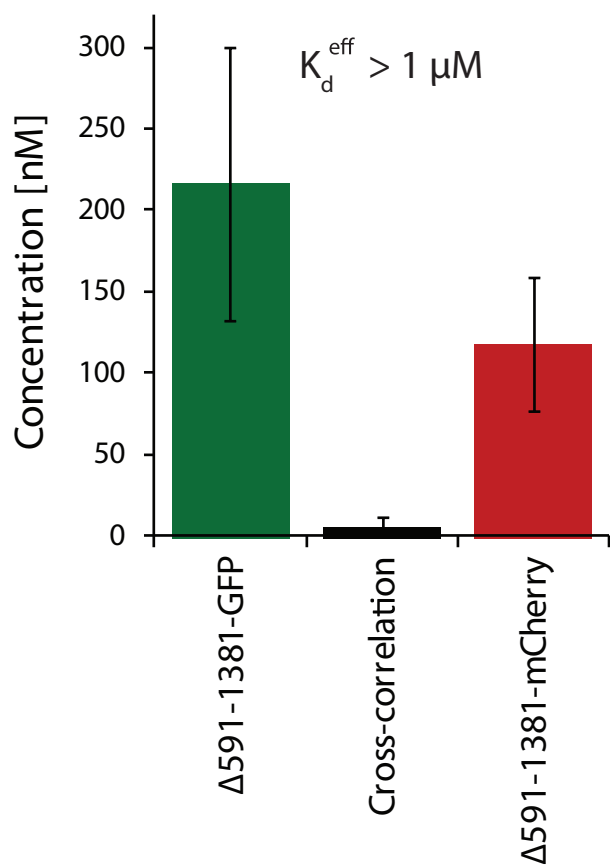


ede1^{Δ591-1391}-3myEGFP/*ede1*^{Δ591-1391}-mCherry



ede1^{Δ591-1391}-TAP/Ede1-GFP

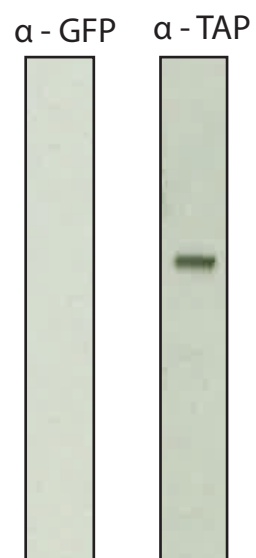


Figure S5. Left panel: Tandem affinity purification of a diploids *ede1* ^{Δ 591-1391}-TAP/Ede1-eGFP strain. Purified proteins were subject to SDS-PAGE and were immunoblotted with α -GFP to detect Ede1-eGFP and α -TAP to detect Ede1-TAP. Right panel: FCCS measurements of *ede1* ^{Δ 591-1381}-3myeGFP/ *ede1* ^{Δ 591-1381}-mCherry. Measurements were performed in 40 individual cells. Error bars represent standard deviation.