

Figure S4

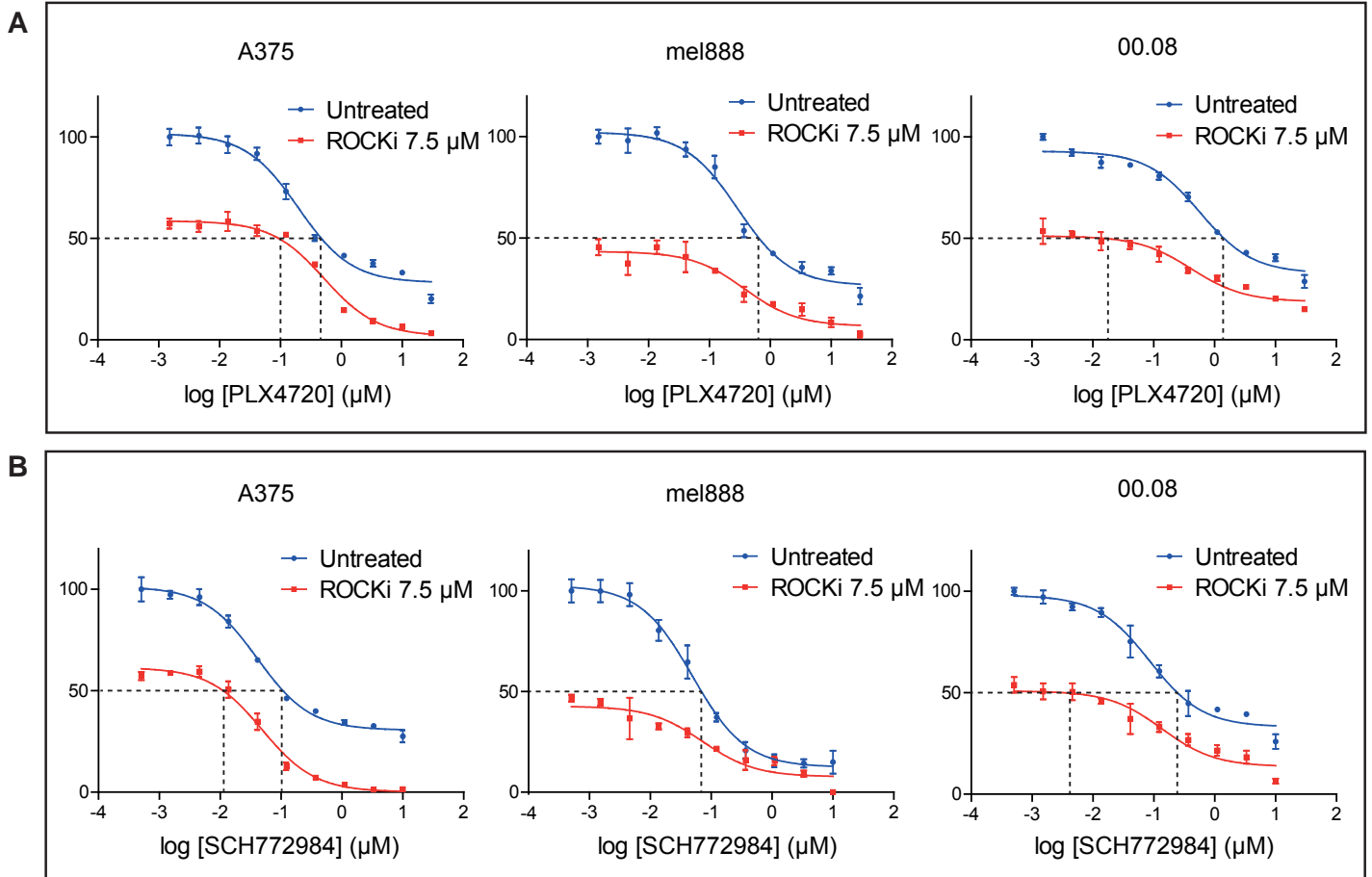


Figure S4. Targeted ROCK inhibition increases the toxicity of inhibitors of the MAPK pathway. A) Cells were treated with dilution series of PLX4720 either alone or in combination with the ROCK inhibitor GSK269962A. After three days cell viability was determined with a cell titer blue assay and represented on the y-axis. Error bars represent standard error of the mean of one representative experiment performed in triplicate. Dashed lines indicate change in IC50. B) Cells were treated as described in A, but treated with a dilution series of the ERK inhibitor SCH772984. Error bars represent standard error of the mean of one representative experiment performed in triplicate. Dashed lines indicate changes in IC50.