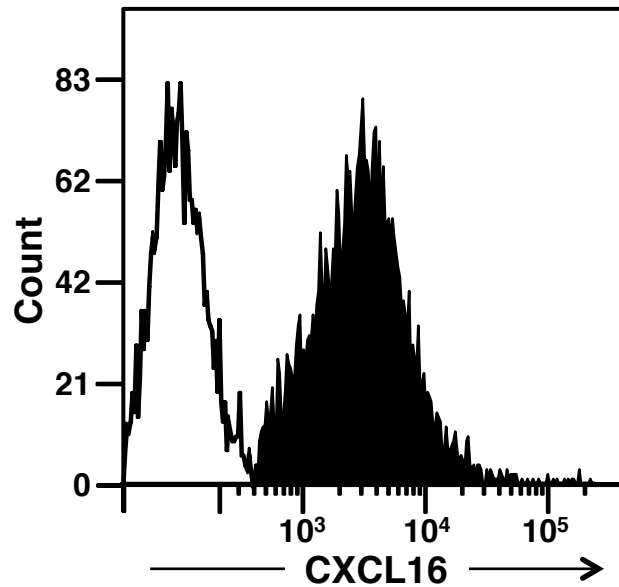


Additional files



Additional file 1: Expression of membrane-bound CXCL16 on SL4-CXCL16 cells

SL4-CXCL16 cells were incubated with goat anti-mouse CXCL16 mAb (R&D Systems, Minneapolis, MN, USA), or with control goat IgG (R&D Systems). FITC conjugated rabbit anti-goat IgG (MP Bio Japan, Tokyo, Japan) was used as the second antibody. FITC-labeled cells were then analyzed by flow cytometric analysis using FACSCanto (BD Biosciences, San Diego, CA, USA). FACS profiles by control goat IgG (open area) and anti-mouse CXCL16 mAb (shaded area) are shown.