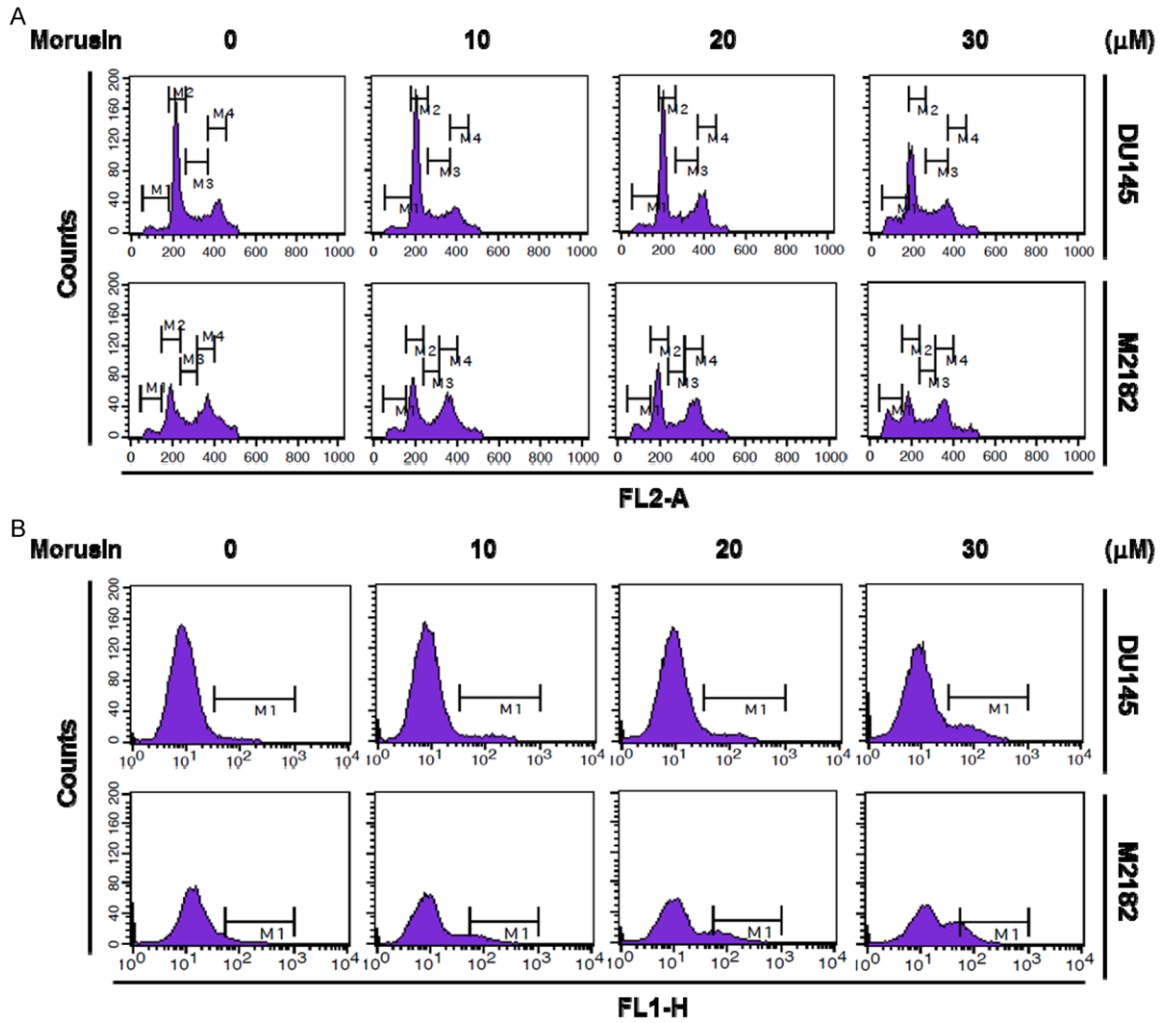


Morusin induces apoptosis in prostate cancer cells



Supplementary Figure 1. Effect of morusin on apoptosis in human prostate cancer cells. DU145 and M2182 cells were treated with the indicated concentration of morusin for 24 hours. A. The cells were stained with PI, and analyzed by flow cytometry. B. The cells were stained with Annexin V, and analyzed by flow cytometry.