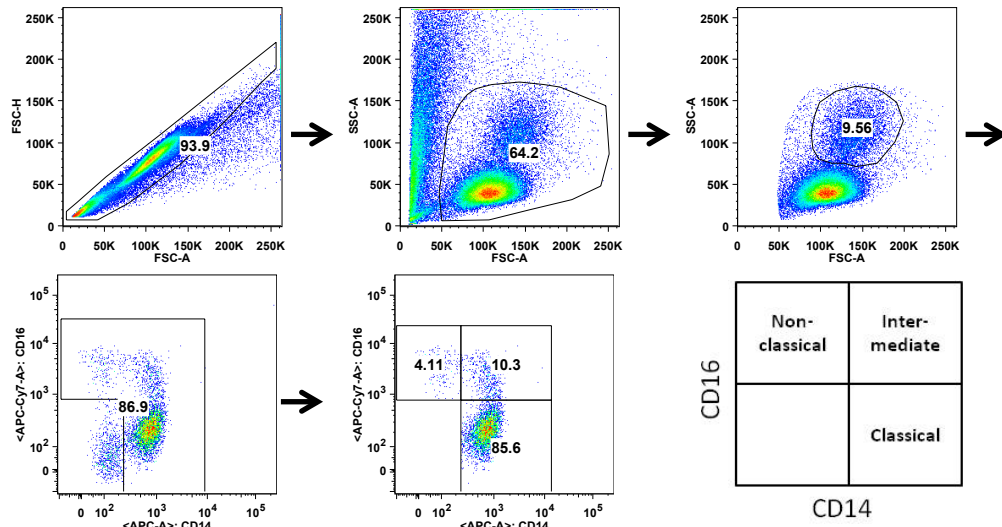
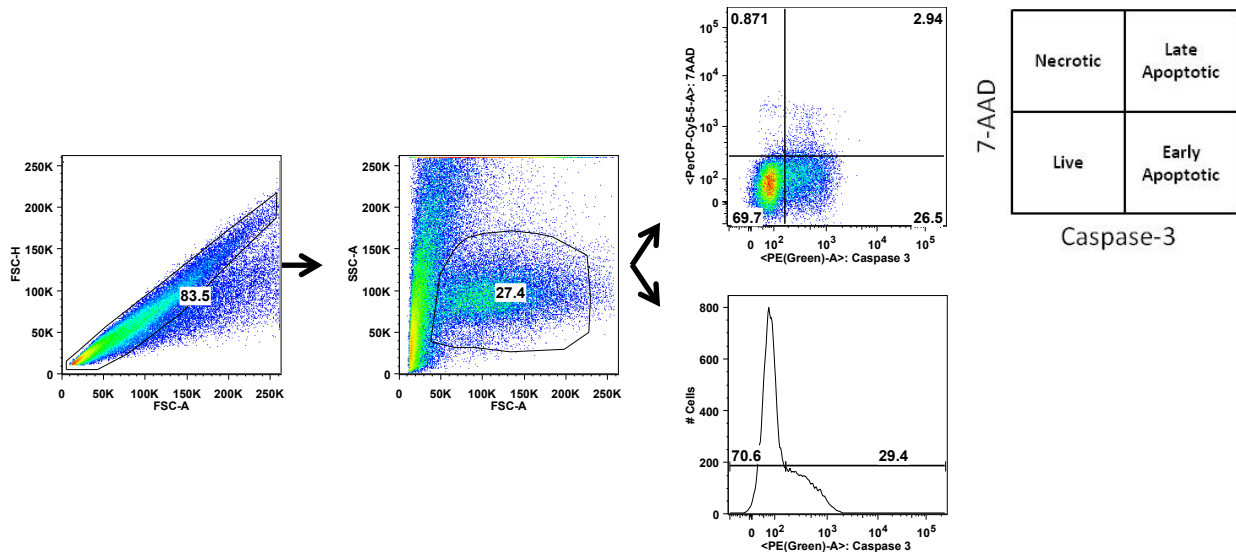
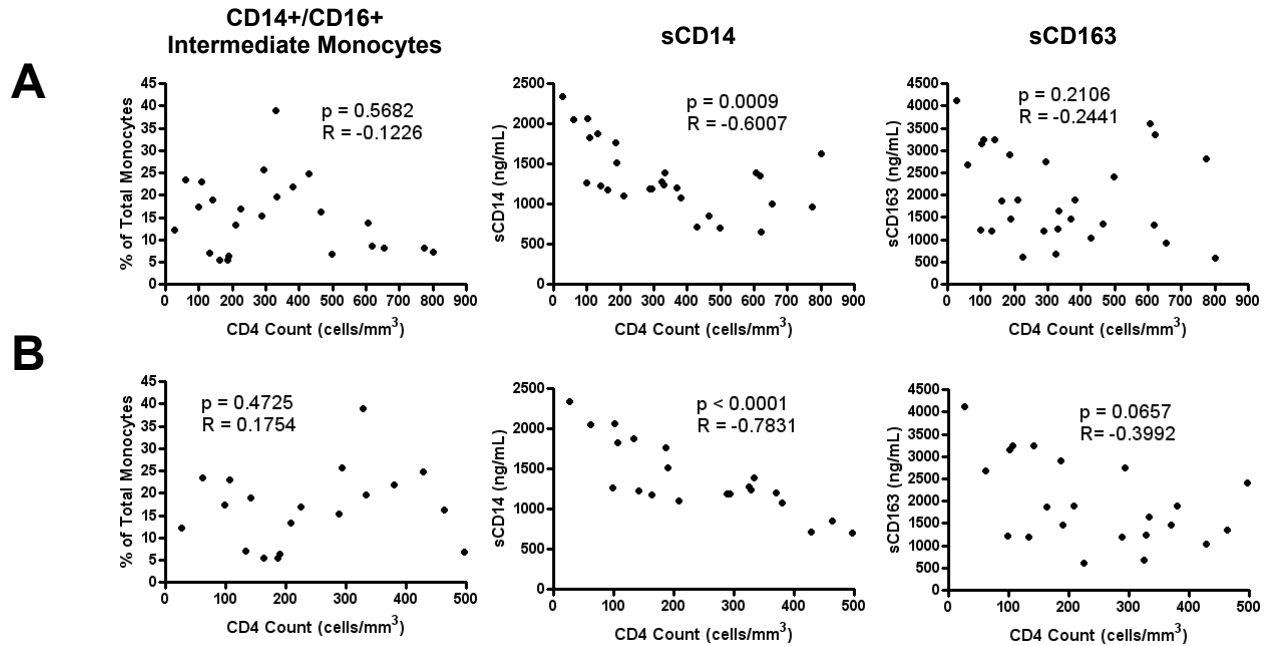


Category	n	Fem/Total	% Female	Age (Med, IQR)
HIV(-)	33	8/33	0.242	43.5 (28.5-54)*
HIV(+) Lo (<Log4.6)	14	3/14	0.214	46 (30-53)
HIV(+) Hi (>Log4.6)	21	1/21	0.048	40 (27.5-47)
*Age information in the HIV(-) group available for 22/33 donors.				

Supplemental Table 1: Gender and age of donor population.

A**B**

Supplemental Figure 1: Monocyte subset definition and apoptosis gating by flow cytometry. (A) PBMC gated on singlets, live cells, monocytes by scatter profile, and CD14/CD16 into non-classical (CD14+/CD16++), intermediate (CD14+/CD16+), and classical (CD14++/CD16-) monocyte subsets. (B) Negatively purified monocytes gated on singlets, intact cells, and subject to apoptosis determination via 7-AAD and caspase-3 positive staining. Percent apoptotic cells counted as total caspase-3 positive cells (bottom right and top right quadrants).



Supplemental Figure 2: Monocyte/macrophage activation and CD4 count in HIV(+) patient cohort. (A-B) Spearman ranked correlation of CD4 count with percentage of intermediate CD14+/CD16+ monocytes (left), plasma sCD14 (middle), and plasma sCD163 (right) in (A) total HIV(+) cohort and (B) HIV(+) patients below CD4 count of 500 cells/mm³. Spearman (two-tailed) Rho and p-values displayed with $p < 0.05$ considered significant.