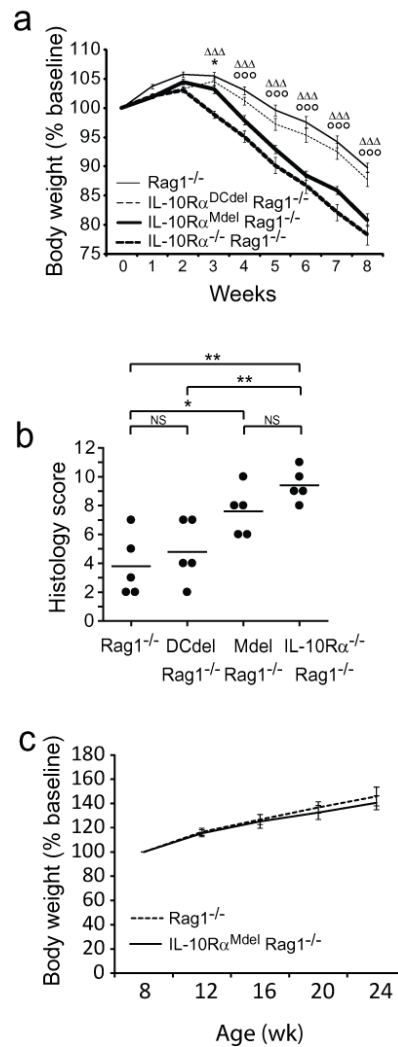
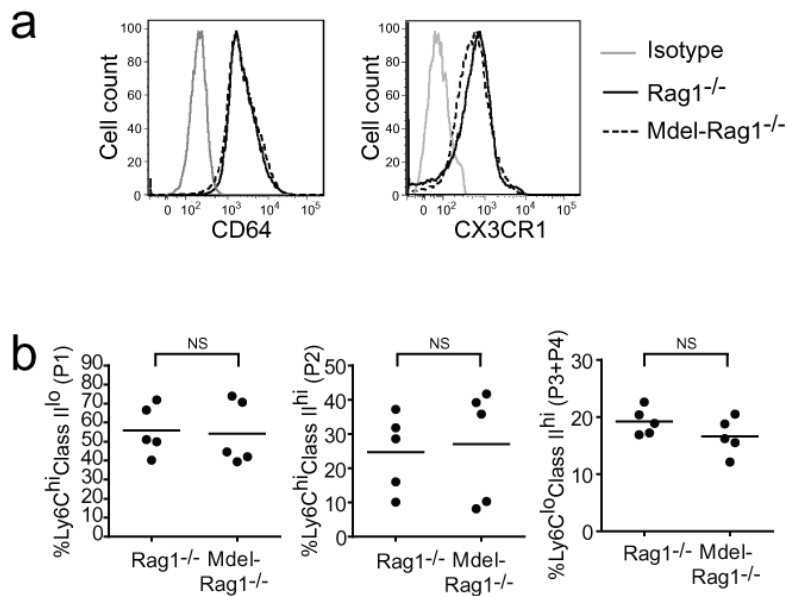


Supplementary Figure 1. IL-10-mediated colitis is independent of the T cell IL-10 response.

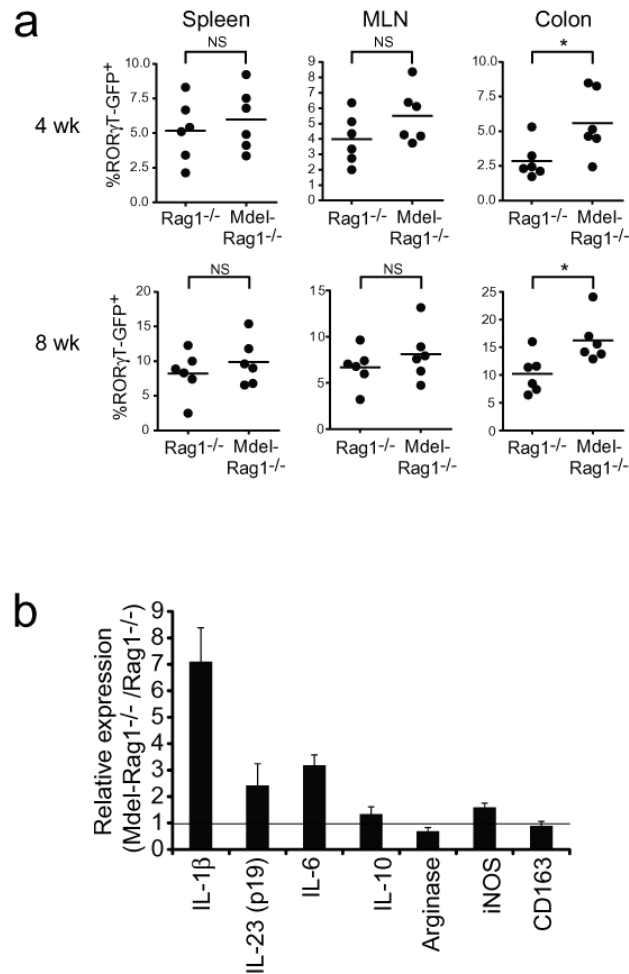
Colitis was induced in Rag1^{-/-} mice by transfer of 5×10^5 CD4⁺CD25⁻CD45RB^{hi} T cells from C57BL/6 or IL-10R α ^{Tdel} mice. (A) Mean \pm 1 s.e.m. percent of initial body weight is plotted. (B) Representative photomicrographs and tallied histopathologic scores from H&E stained colon sections obtained 8 wk after disease induction. (C) Frequency of IL-17⁺, IFN- γ ⁺ and Foxp3⁺ cells among CD4⁺ T cells collected from colons and spleen of 8 wk diseased mice.



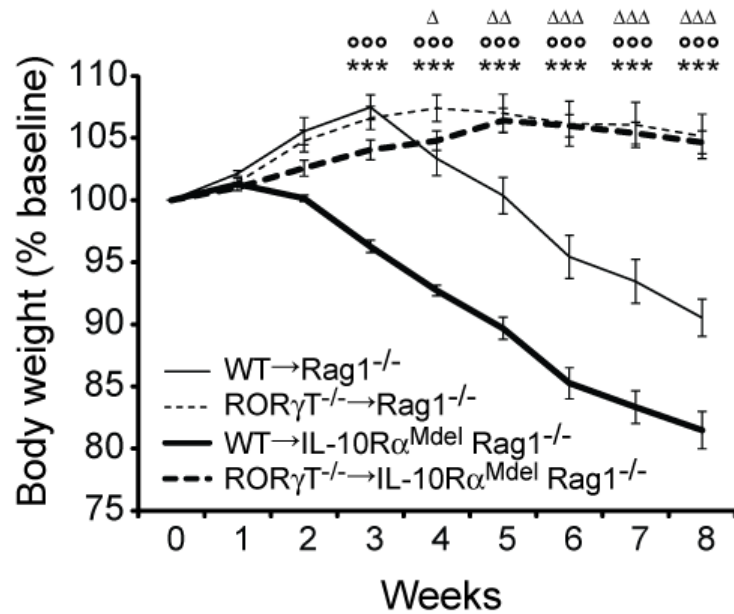
Supplementary Figure 2. Macrophage but not DC IL-10R α expression protects mice from T cell-induced colitis. Colitis was induced by transfer of 5×10^5 C57BL/6 CD4⁺CD25⁻CD45RB^{hi} T cells into Rag1^{-/-}, IL-10R α ^{Mdel}Rag1^{-/-}, IL-10R α ^{DCdel}Rag1^{-/-} and IL-10R α ^{-/-}Rag1^{-/-} mice. (A) Change in body weight was monitored. Mean \pm 1 s.e.m. percent of initial body weight is plotted. *, IL-10R α ^{-/-}Rag1^{-/-} vs IL-10R α ^{Mdel}Rag1^{-/-}; °, Rag1^{-/-} vs IL-10R α ^{Mdel}Rag1^{-/-}; Δ, Rag1^{-/-} vs IL-10R α ^{-/-}Rag1^{-/-} recipient mice. One and three symbols correspond to $p < 0.05$ and $p < 0.001$. No significant differences were seen between IL-10R α ^{DCdel}Rag1^{-/-} and Rag1^{-/-} mice. (B) Tallied histopathologic scores from H&E stained colon sections obtained 8 wk after disease induction. *, $p < 0.05$; **, $p < 0.01$. (C) Weight gain in Rag1^{-/-} and IL-10R α ^{Mdel}Rag1^{-/-} mice observed for 24 wk. Differences are not significant.



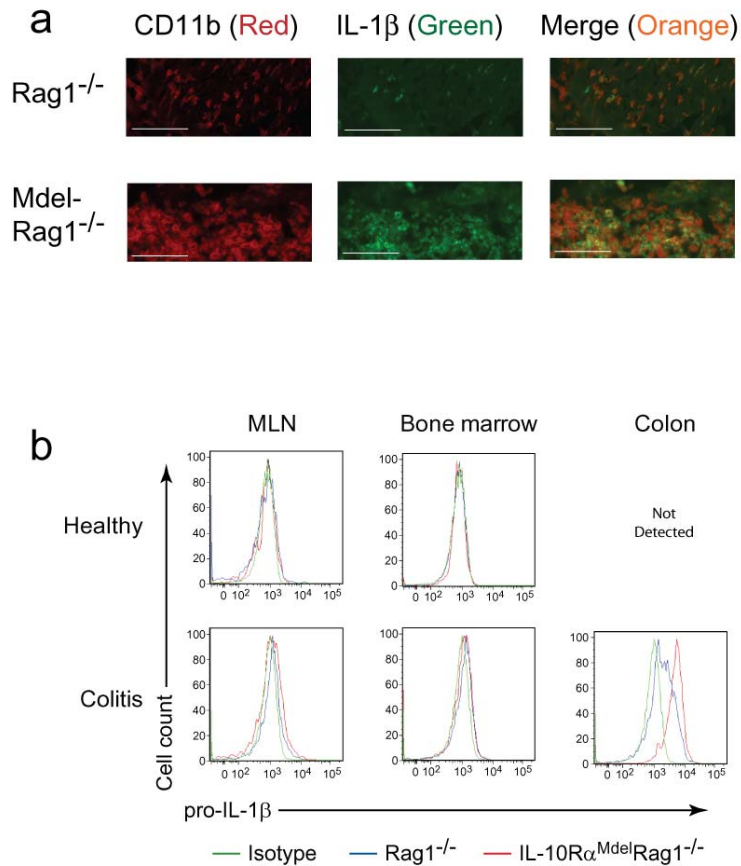
Supplementary Figure 3. Phenotypic analysis of LPM ϕ s. (A) Flow cytometric analysis of CD64 and CX3CR1 expression among colonic CD11b^{hi}CD11c^{-/lo/mod}F4/80⁺Ly6G^{-/lo}SiglecF⁻ cells. (B) Colonic macrophages, gated as CD11b⁺CD64⁺CD103⁻CD45⁺ were segregated into populations based on Ly6C and class II MHC expression. Relative proportions of cells in the indicated categories, denoted as P1, P2, and P3+P4 are shown. No significant differences were identified between populations for the categories shown or among total Ly6C^{hi} (P1+P2) cells.



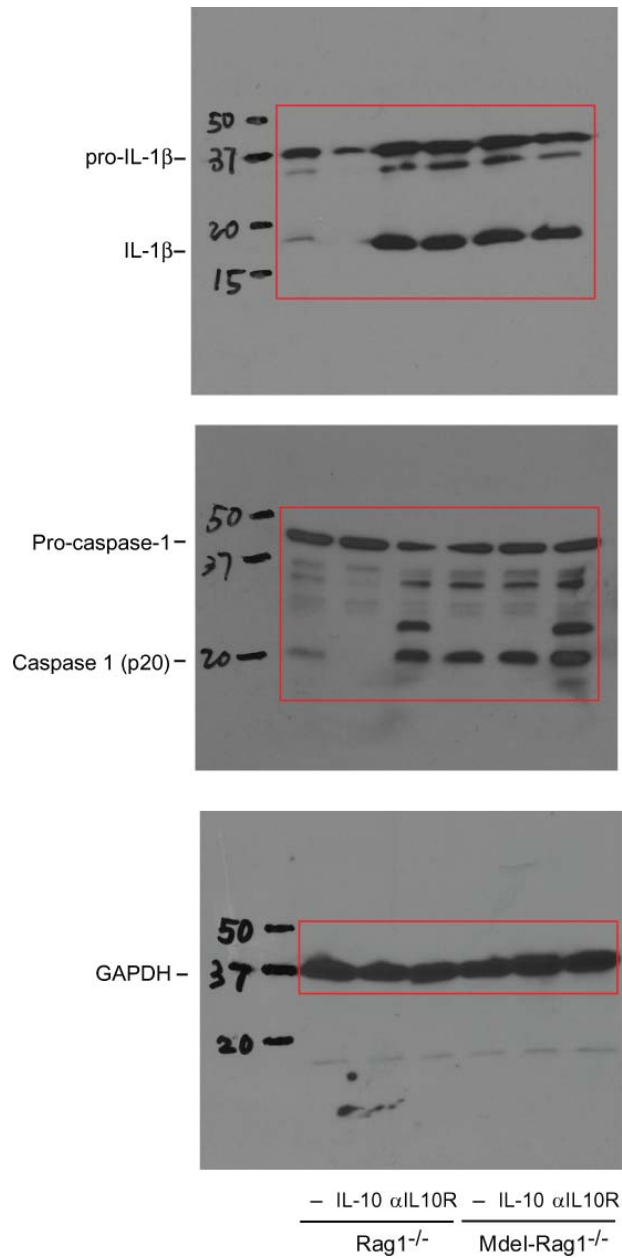
Supplementary Figure 4. Increased Th17 T cell induction in IL-10R α ^{Mdel}Rag1^{-/-} mice. (A) Colitis was induced by transfer of 5×10^5 CD4⁺CD25⁻CD45RB^{hi} ROR γ T-GFP T cells into Rag1^{-/-} and IL-10R α ^{Mdel}Rag1^{-/-} mice. Percent of CD4⁺TCR⁺ cells positive for ROR γ T-GFP in the spleen, MLN, and colon at 4 and 8 wk after disease induction is plotted. *, <0.05. (B) Relative expression of the indicated mRNAs from CD11b⁺CD64⁺CD103⁻CD45⁺Ly6C^{hi} LPM ϕ s sorted from colon tissue of mice with colitis and measured by qRT-PCR. The expression ratio (mean+1 s.d.) of IL-10R α ^{Mdel}Rag1^{-/-} and Rag1^{-/-} mice is plotted.



Supplementary Figure 5. RORγT dependence of T cell induced colitis in IL-10Rα^{Mdel}Rag1^{-/-} mice. Colitis was induced by transfer of 5x10⁵ C57BL/6 or RORγT^{-/-} CD4⁺CD25⁺CD45RB^{hi} T cells into Rag1^{-/-} and IL-10Rα^{Mdel}Rag1^{-/-} mice. Mean±1 s.e.m. percent of initial body weight is plotted. *, WT→Rag1^{-/-} vs WT→IL-10Rα^{Mdel}Rag1^{-/-}; °, WT→IL-10Rα^{Mdel}Rag1^{-/-} vs RORγT^{-/-}→IL-10Rα^{Mdel}Rag1^{-/-}; Δ, WT→Rag1^{-/-} vs RORγT^{-/-}→Rag1^{-/-} mice. One, two, and three symbols correspond to p<0.05, p<0.01, and p<0.001. No significant differences between RORγT^{-/-}→Rag1^{-/-} and RORγT^{-/-}→IL-10Rα^{Mdel}Rag1^{-/-} mice were seen.



Supplementary Figure 6. Elevated colonic IL-1 β production in IL-10R α^{Mdel} Rag1^{-/-} LPM ϕ s. (A) Colons from Rag1^{-/-} and IL-10R α^{Mdel} Rag1^{-/-} were isolated 8 wk after colitis induction and cryo-sectioned for immunohistochemistry. Representative confocal images from Rag1^{-/-} and IL-10R α^{Mdel} Rag1^{-/-} sections co-stained for IL-1 β (green) and CD11b (red) show overlap between positive populations. Bar corresponds to 50 μ m. (B) Flow cytometry of MLN, bone marrow, and colonic M ϕ s was performed similarly to Fig. 7a. Representative overlay plots showing isotype or pro-IL-1 β expression in cells from Rag1^{-/-} and IL-10R α^{Mdel} Rag1^{-/-} mice in which colitis was not induced (top row) or 8 wk after the induction of colitis (bottom row) are shown.



Supplementary Figure 7. Full size Western blot analyses. Full size scans of blots presented in cropped format in Figure 7b are presented. Numbers with dashes indicate position of MW markers. Red boxes show approximate regions of cropped images.