

Electronic Supplement #2 for O'Doherty et al. 2014

Figure 2s. Success rates for dried blood spot collection and assays for C-reactive protein (CRP), Epstein-Barr virus (EBV) antibody, total hemoglobin (THb) and glycosylated hemoglobin (HbA1c).

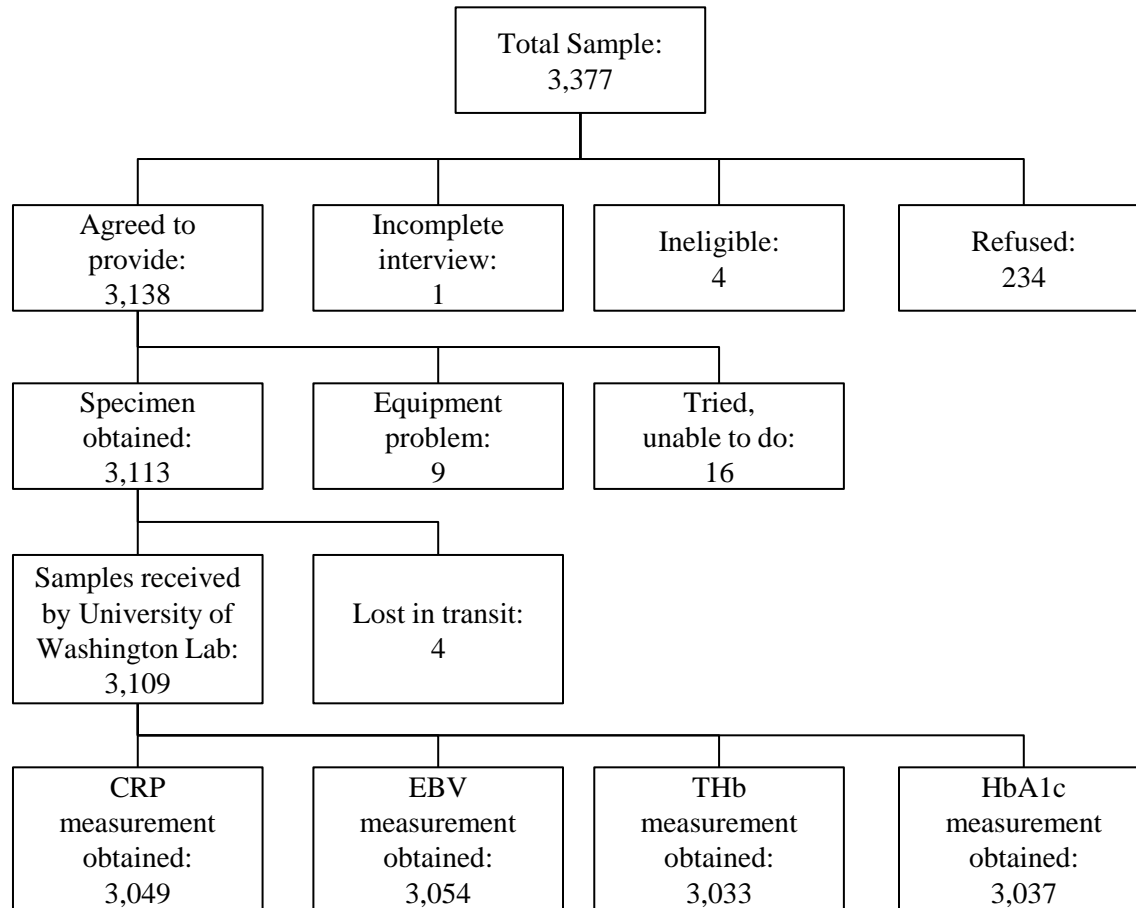


Figure 3s. Success rates for saliva passive drool collection and assays for 17-beta-estradiol, testosterone, progesterone and dihydroepiandrosterone (DHEA).

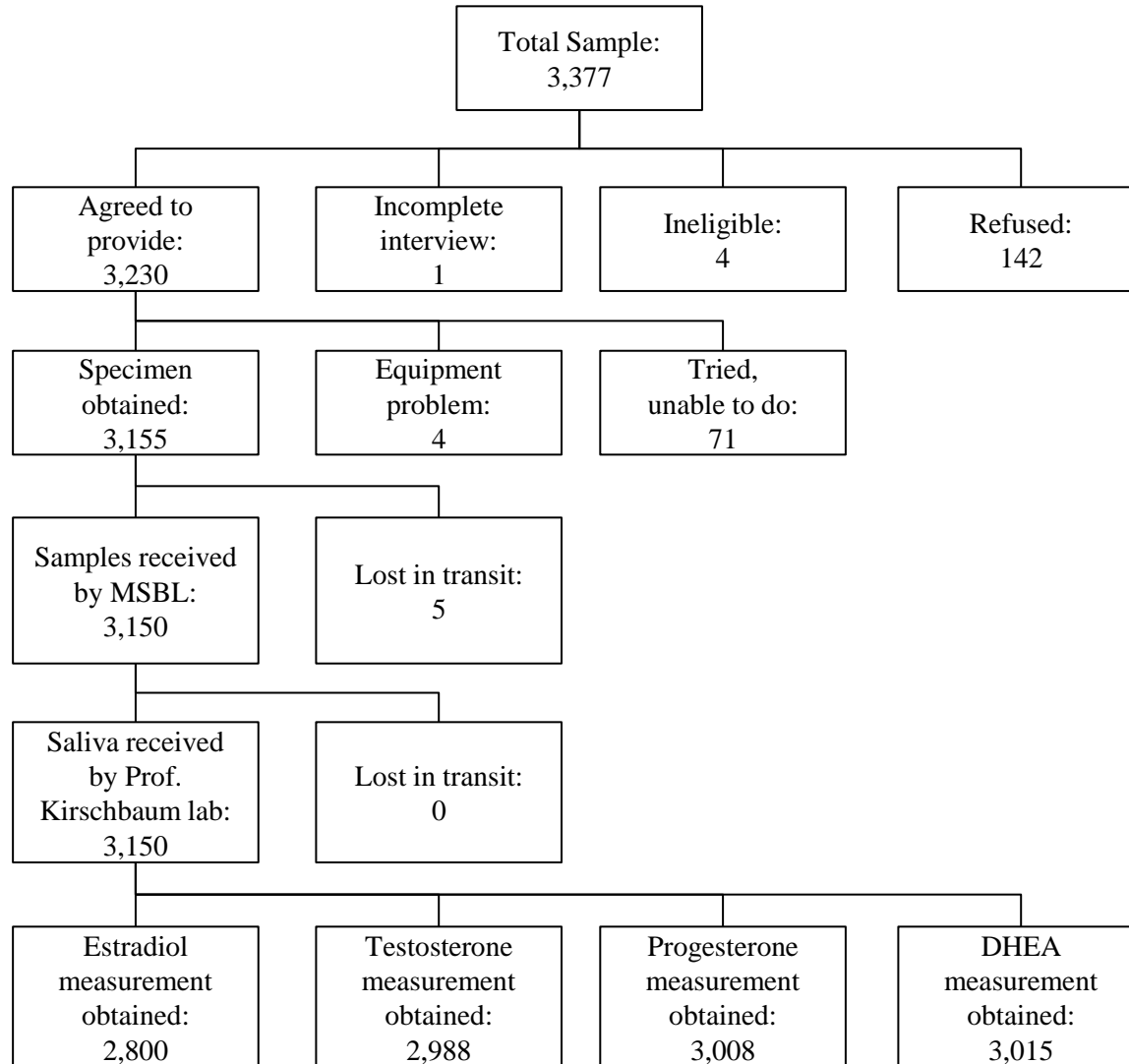


Figure 4s. Success rates for saliva sponge collection and assays for cortisol. Saliva sponges were collected at 3 different time periods during the interview.

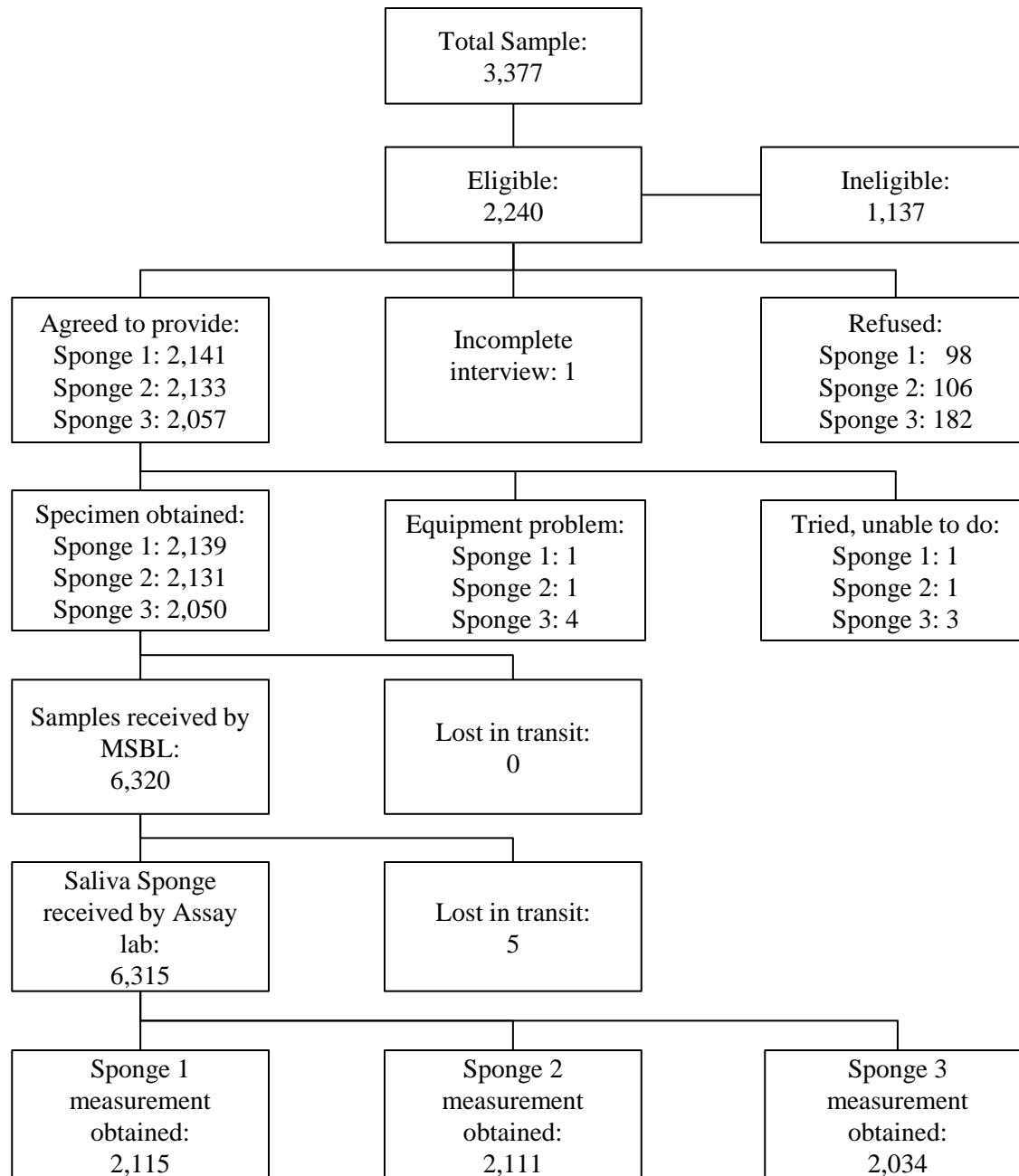


Figure 5s. Success rates for vaginal swab collection and assays for bacterial vaginosis (BV) and yeast.

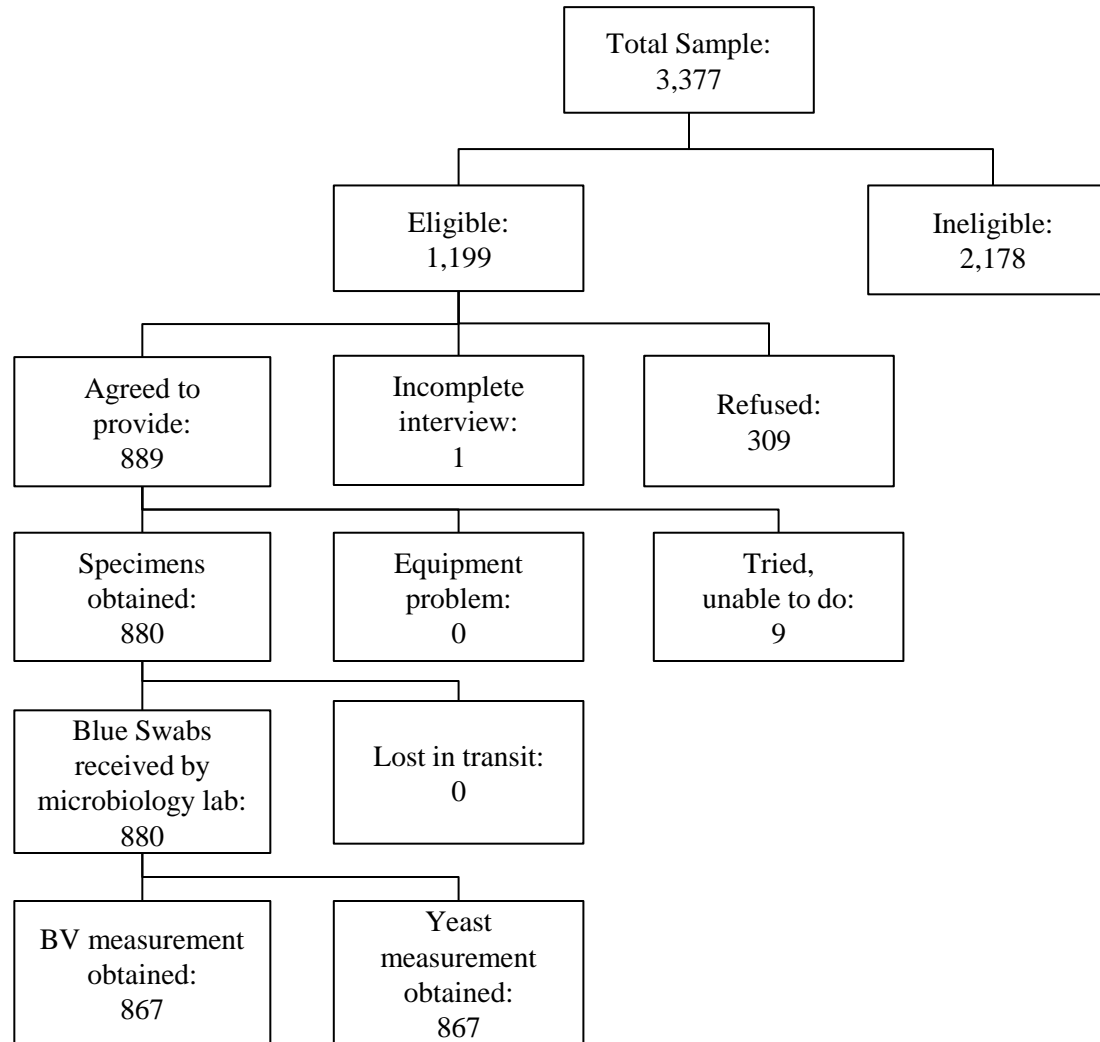


Figure 6s. Success rates for urine collection and assays for creatinine, oxytocin and vasopressin.

