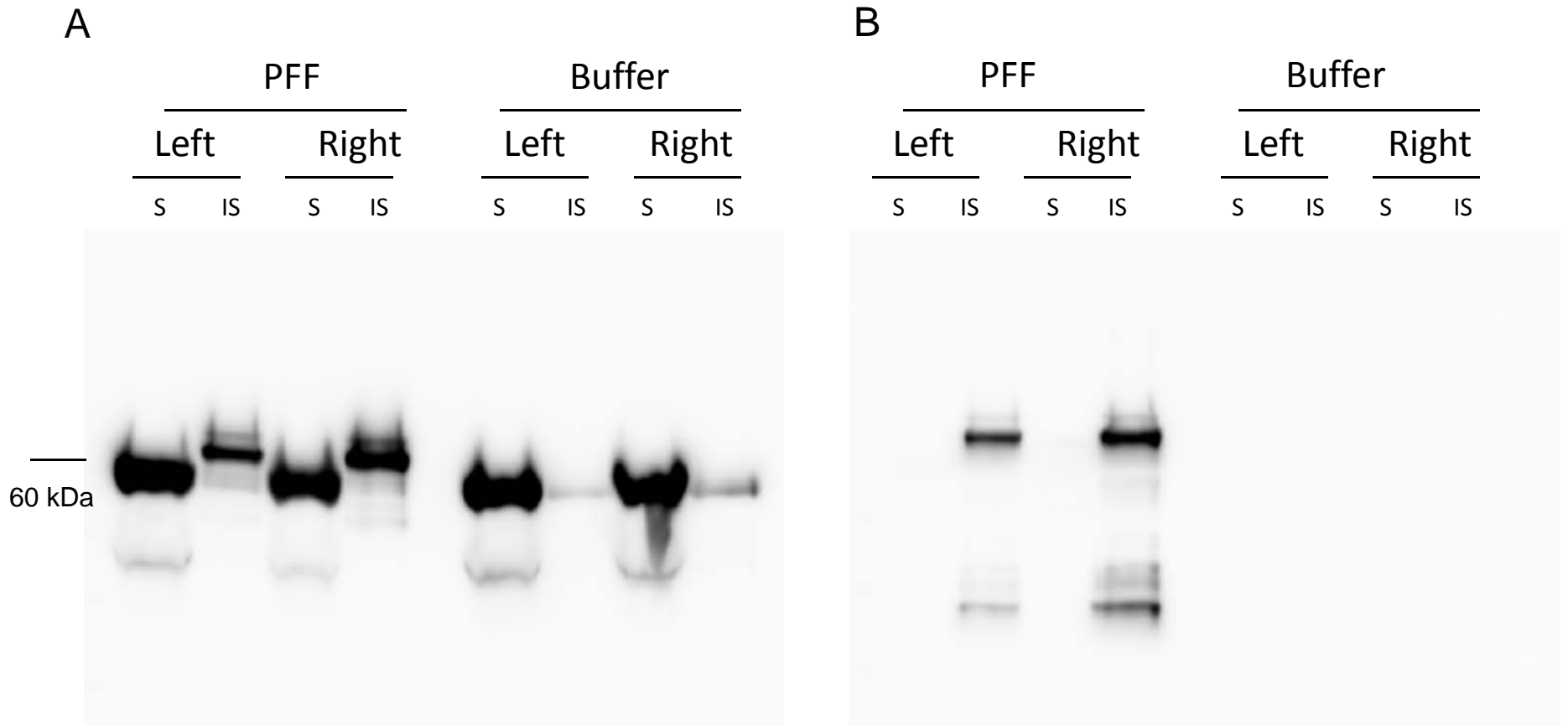
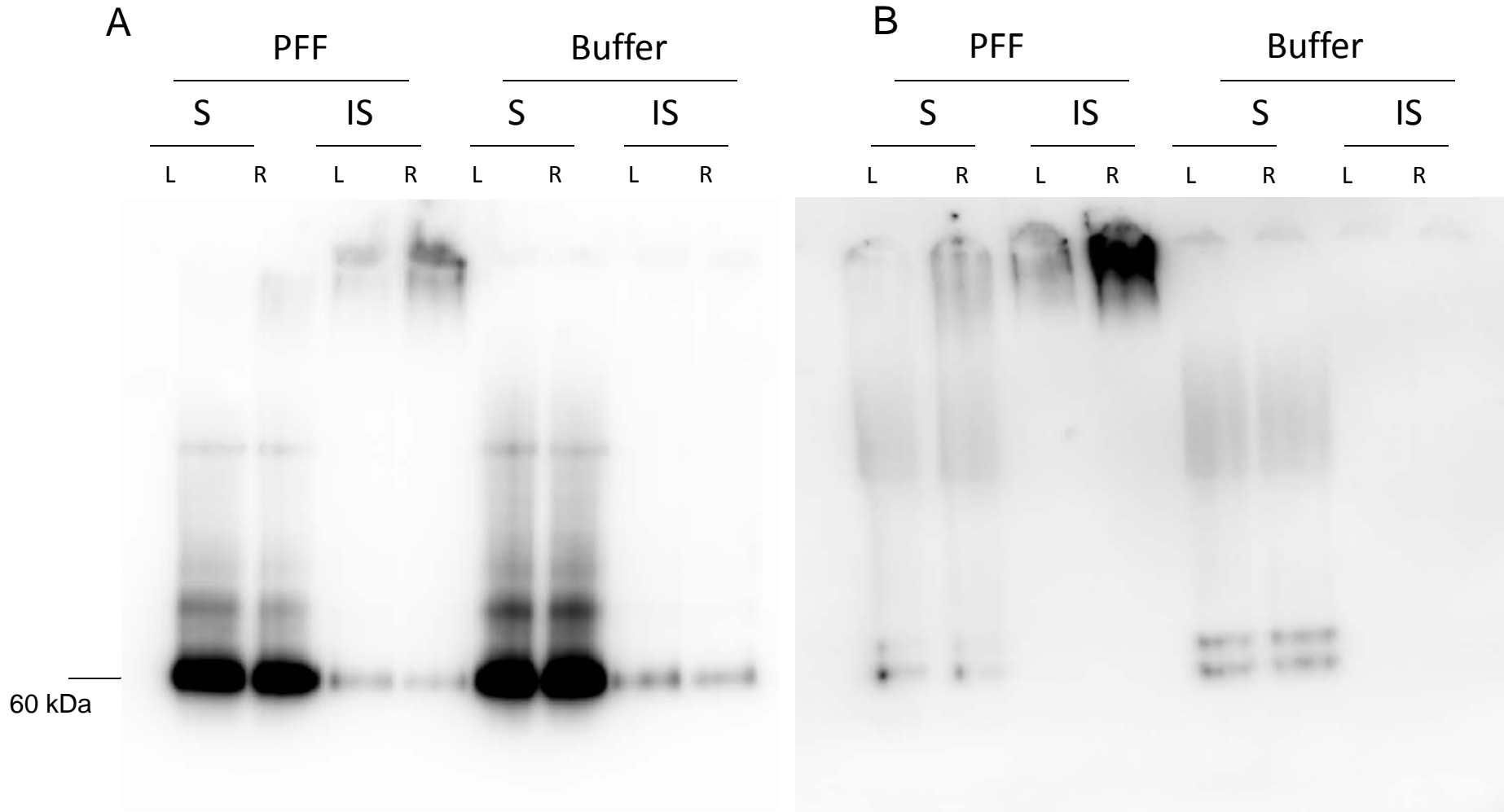


**Additional Figure 1**



Molecular analysis of PFF-induced Tau aggregates. Sarcosyl soluble (S) and insoluble (IS) fractions from left or right hemispheres dissected from P301L mice three months after intracranial injection with PFF or buffer are analysed with western blotting as described in materials and methods. Panel A shows total tau detected by hTau10 while panel B shows phosphorylated Tau detected by AT8.

**Additional Figure 2**



Molecular analysis of PFF-induced Tau aggregates. Sarcosyl soluble (S) and insoluble (IS) fractions from left (L) or right (R) hemispheres dissected from P301L mice three months after intracranial injection with PFF or buffer are analysed with native gel electrophoresis and western blotting as described in materials and methods. Panel A shows total tau detected by hTau10 while panel B shows phosphorylated Tau detected by AT8.

Additional Figure 3

MYC-blot: Insoluble fractions

