



STRUCTURAL BIOLOGY  
COMMUNICATIONS

**Volume 71 (2015)**

**Supporting information for article:**

**Purification, crystallization and preliminary X-ray diffraction analysis of SpaD, a backbone-pilin subunit encoded by the fimbrial *spaFED* operon in *Lactobacillus rhamnosus* GG**

**Priyanka Chaurasia, Ingemar von Ossowski, Airi Palva and Vengadesan Krishnan**

**Table S1** Homologs of SpaD available in the PDB identified by psi-blast search tool. Top hits were arranged based on the on E-value.

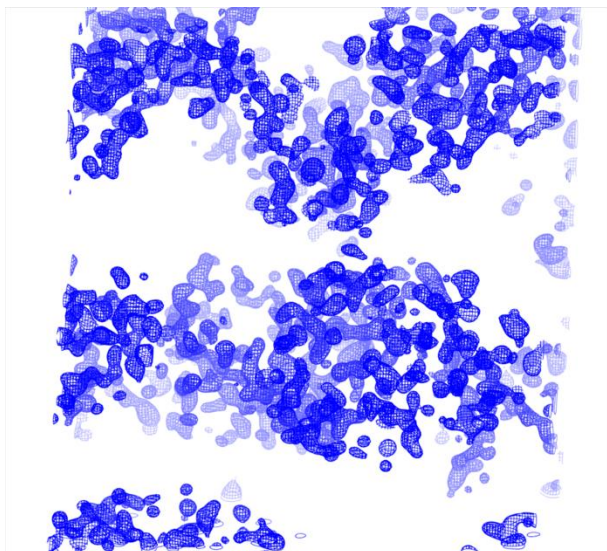
PDBid	Sequence identities (%), residue range	E-value	Description
3PG2	24, 171-436	5e-07	C-terminal fragment of GBS80 backbone pilin from <i>Streptococcus agalactiae</i>
3UXF	27, 7-155	5e-06	Fimbrial protein FimP from <i>Acinomyces oris</i>
4P0D	22, 37-439	0.002	Backbone pilin T6 from <i>Streptococcus pyogenes</i>
2WW8	25, 290-431	0.005	Pilus adhesion RrgA from <i>Streptococcus pneumonia</i>

**Table S2** Phasing statistics.

	Initial 19 sites	Deduced 39 sites
CC (all/weak) <sup>§</sup>	38.2/20.4	
Phasing power <sup>#</sup>	1.27	1.46
R <sub>cu</sub> <sup>#</sup>	0.75	0.71
FOM (centric/acentric) <sup>#</sup>	0.38/0.13	0.41/0.14

<sup>§</sup>The correlation coefficient as defined by *SHELXD* used within *autoSHARP*.

<sup>#</sup>as reported by *SHARP*.



**Figure S1** Experimental electron density map of 20Å section showing a clear solvent boundary after density modification (contoured at  $1.5\sigma$  level).