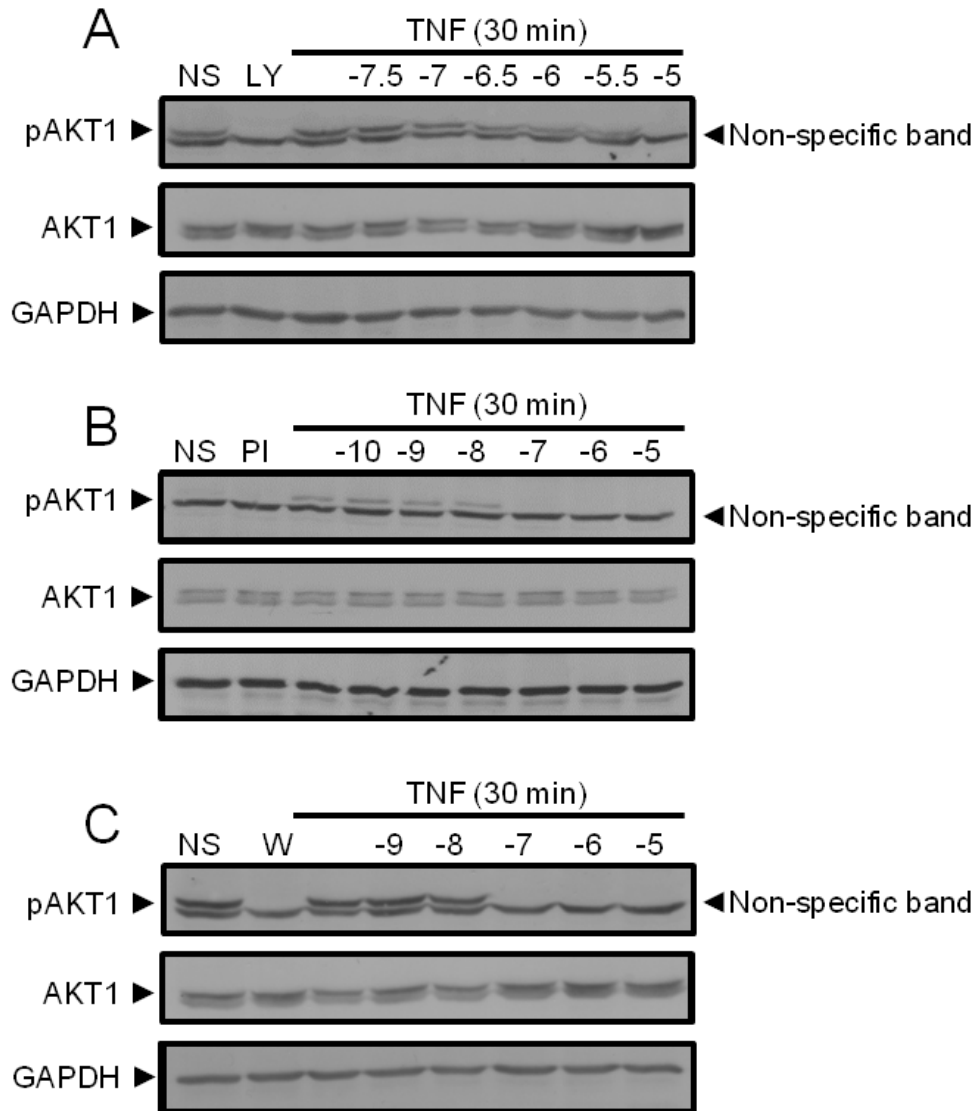


## Supporting Figure S2



### Supporting Figure S2. PKC inhibitors concentration-dependently inhibit AKT1 phosphorylation

Human bronchial epithelial, BEAS-2B, cells were pre-treated for 30 min with the indicated concentrations of **A.** LY294002 (LY), **B.** PI103 (PI) or **C.** wortmannin (W), before addition of 10 ng/ml tumor necrosis factor- $\alpha$  (TNF). Cells were harvested after 30 min for western blotting and probed for phospho v-akt murine thymoma viral oncogene homolog 1 (pAKT1), AKT1 and glyceraldehyde 3-phosphate dehydrogenase (GAPDH).