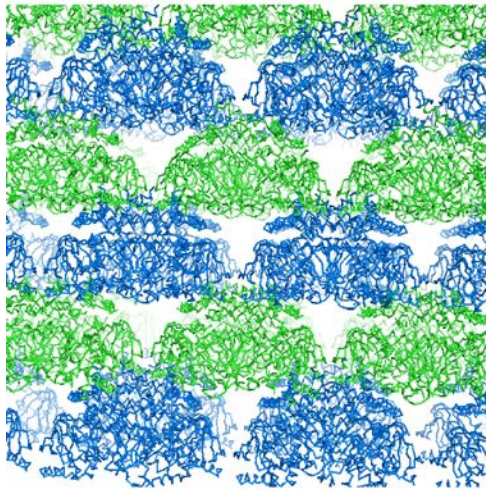
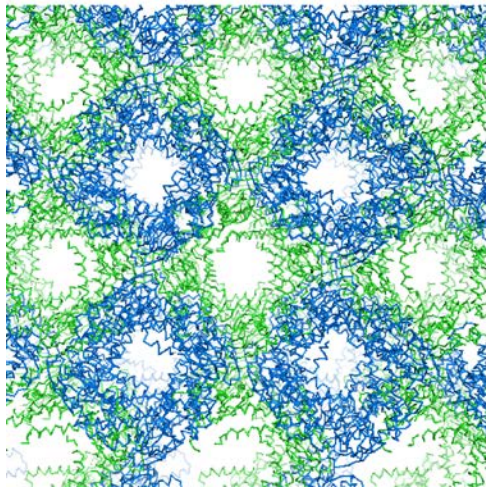


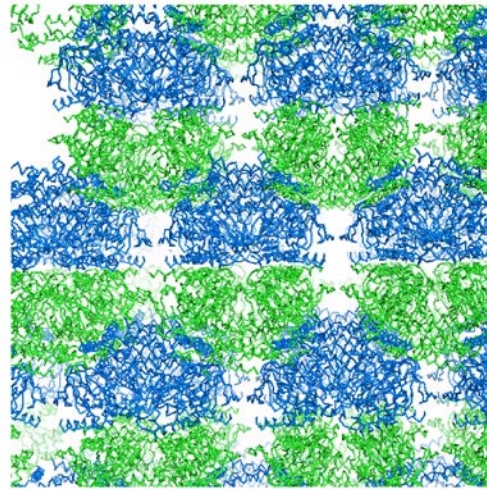
cAMP-bound SthK-C_{term} space group *P4*



90°
↻



cGMP-bound SthK-C_{term} space group *I4*



90°
↻

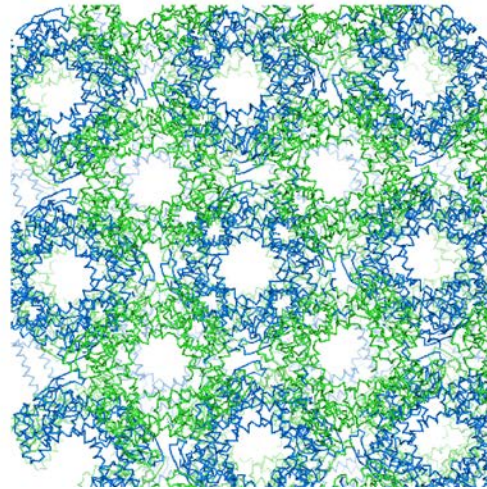


Figure S3. Comparison of the crystal packing for the two different crystal forms of SthK-C_{term} in complex with cAMP or cGMP.

Chain A is colored in blue, chain B in green. In the cAMP-bound crystal form, different tetramers are stacked in a head-to-tail arrangement. In the cGMP-bound crystal form different tetramers are stacked in a tail-to-tail arrangement.