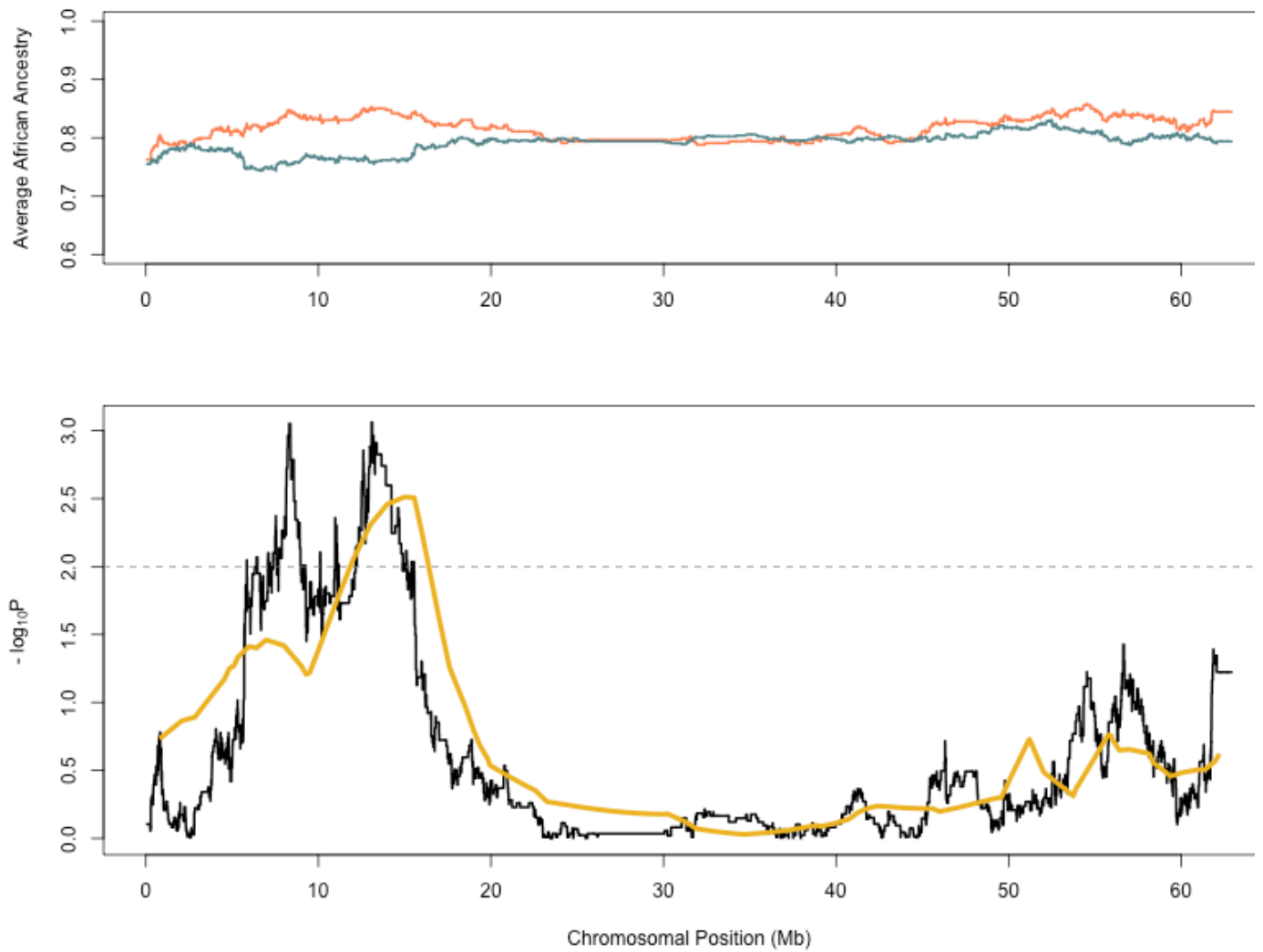
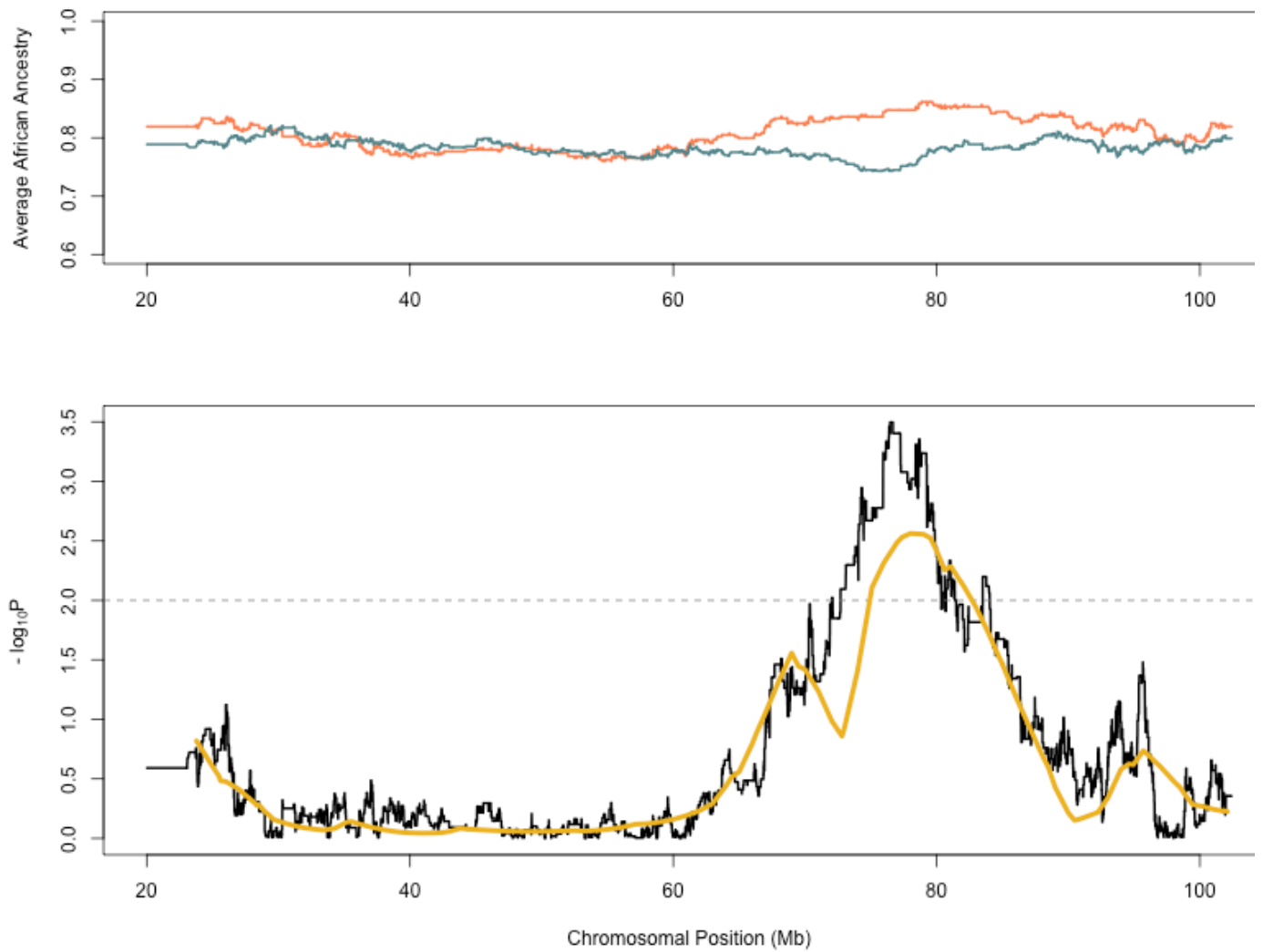


Supplemental Figure 1: Distribution of Average genome-wide African Ancestry with the first two principal components, stratified by clearance (top) and persistence (bottom). The more blue an individual appears, the higher their percentage African ancestry. In both clearance and persistence groups, the average African ancestry is highly correlated with principal component 1. There is no difference in the distributions between the two groups.



Supplemental Figure 2: Chromosome 20 association results by position. The top panel indicates the average percentage African ancestry per location in the clearance individuals (orange) versus the persistence individuals (blue). The next panel shows the association results from LAMP-LD in black and ANCESTRYMAP in golden. Significance is indicated in $-\log_{10} P$ -value, with a suggestive threshold indicated at $P=0.01$ with the grey dashed line.



Supplemental Figure 3: Chromosome 15 association results by position. The top panel indicates the average percentage African ancestry per location in the clearance individuals (orange) versus the persistence individuals (blue). The next panel shows the association results from LAMP-LD in black and ANCESTRYMAP in gold. Significance is indicated in $-\log_{10} P$ -value, with a suggestive threshold indicated at $P=0.01$ with the grey dashed line.