

Figure S1: Phylogenetic distribution using six housekeeping genes from *Xanthomonas* causing bacterial spot in tomato and pepper.

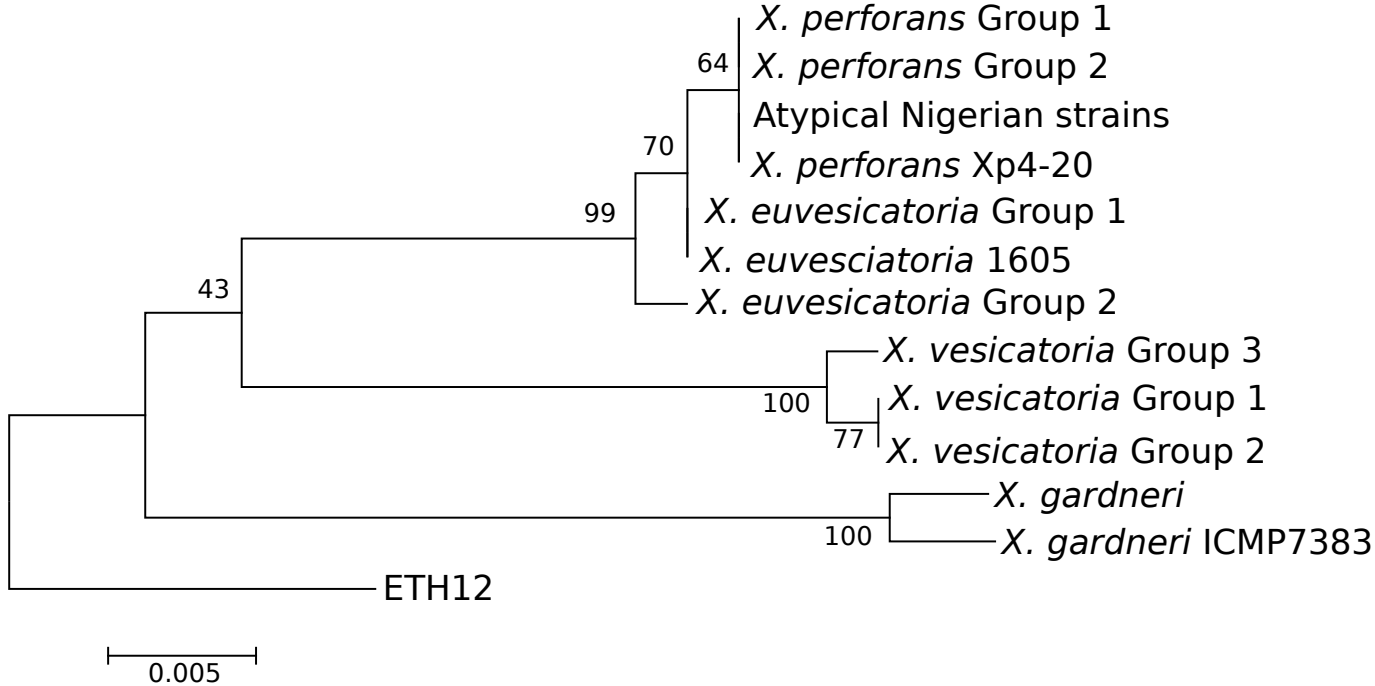


Figure S2-A: Maximum likelihood phylogenetic distribution of clone corrected *Xanthomonas* strains using *fusA* gene

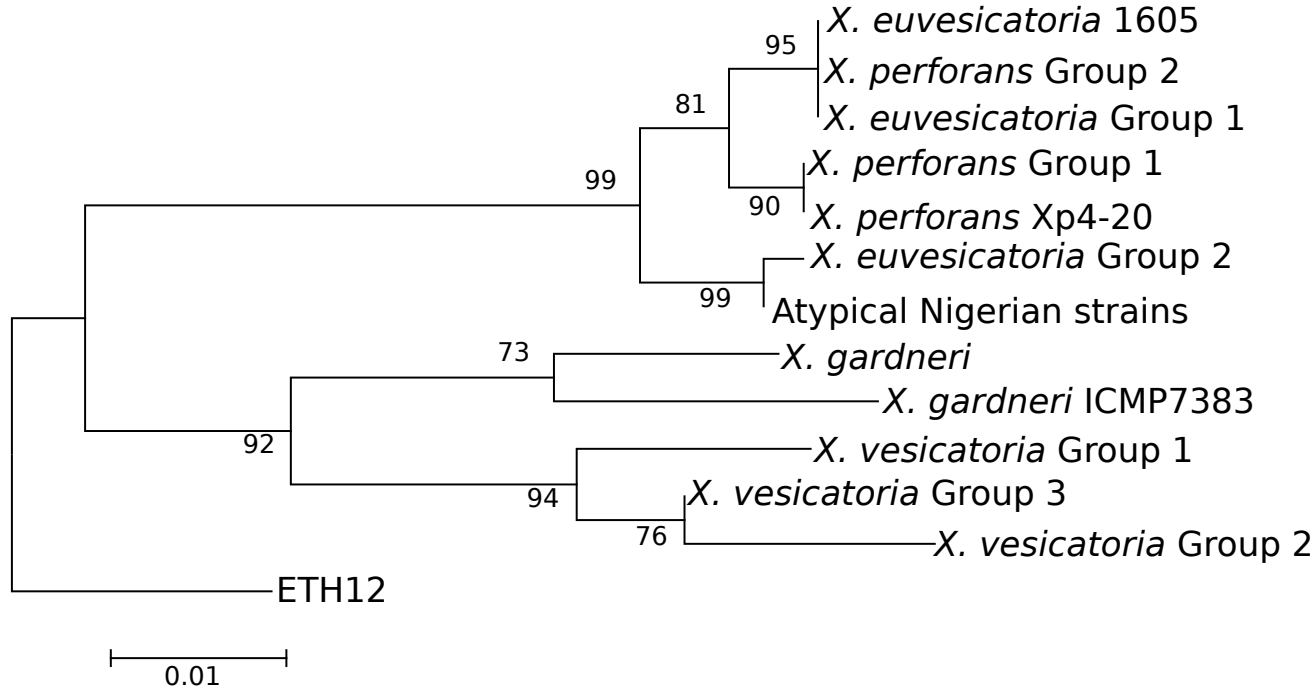


Figure S2-B: Maximum likelihood phylogenetic distribution of clone corrected *Xanthomonas* strains using *gapA* gene

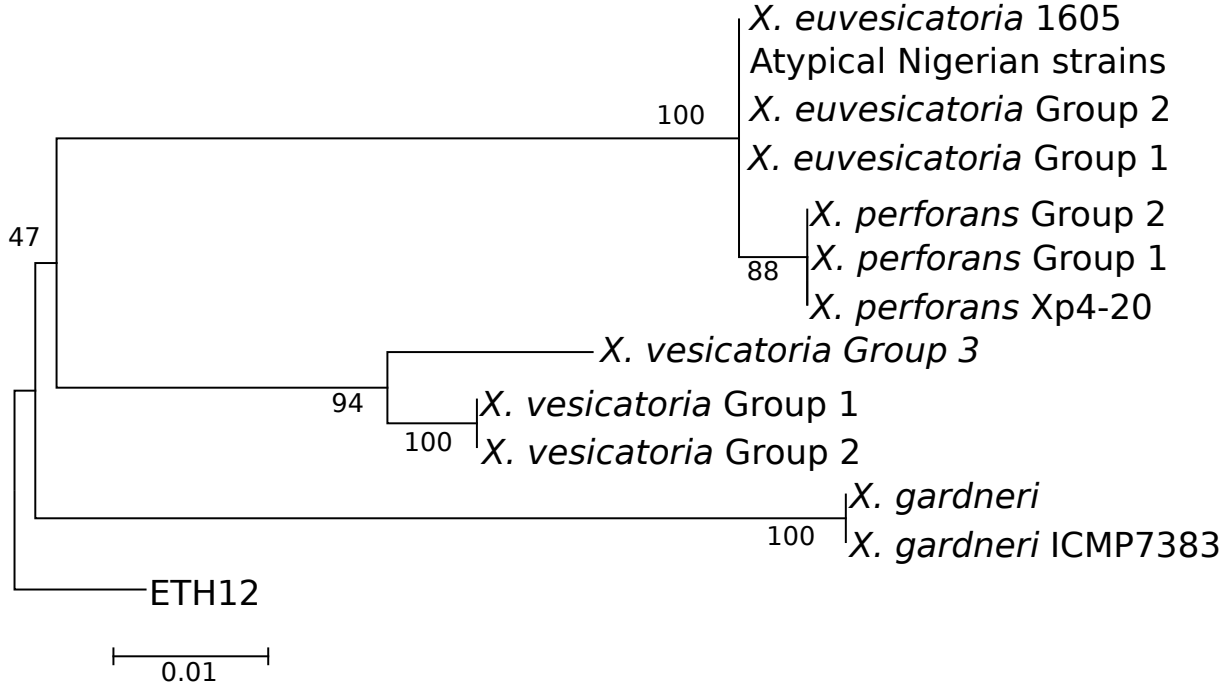


Figure S2-C: Maximum likelihood phylogenetic distribution of clone corrected *Xanthomonas* strains using *gltA* gene

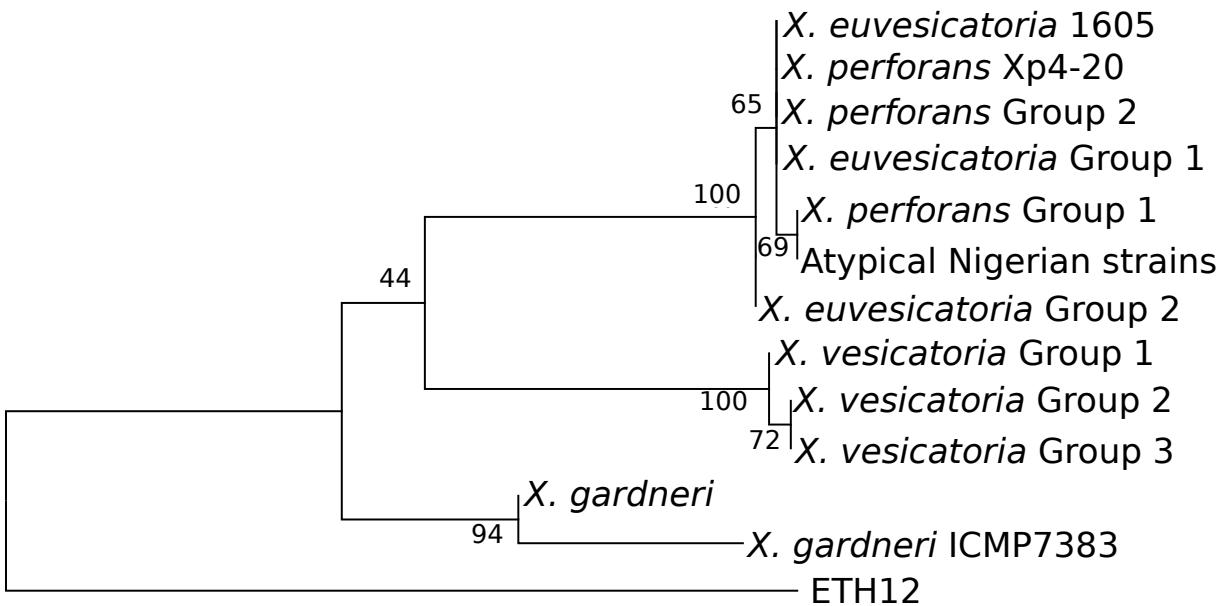


Figure S2-D: Maximum likelihood phylogenetic distribution of clone corrected *Xanthomonas* strains using *gyrB* gene

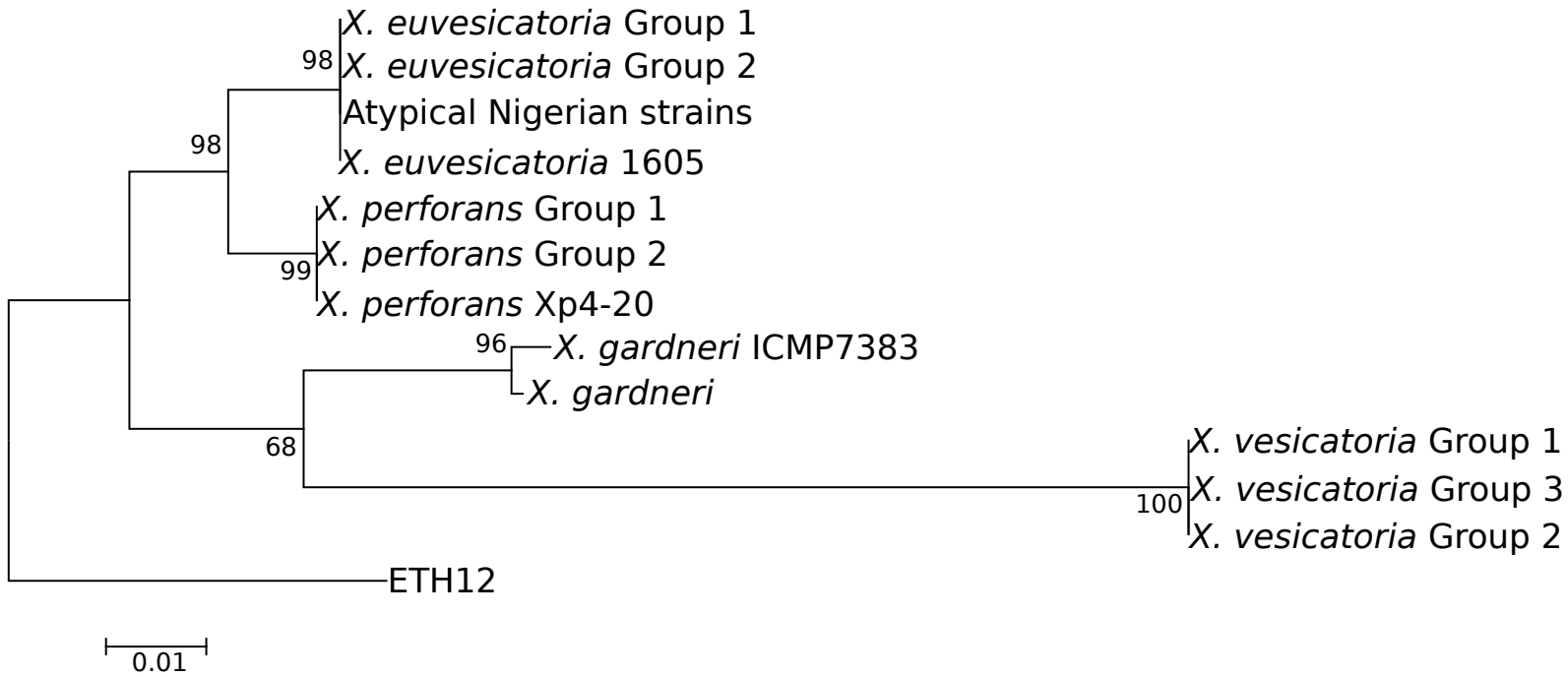


Figure S2-E: Maximum likelihood phylogenetic distribution of clone corrected *Xanthomonas* strain using *lacF* gene

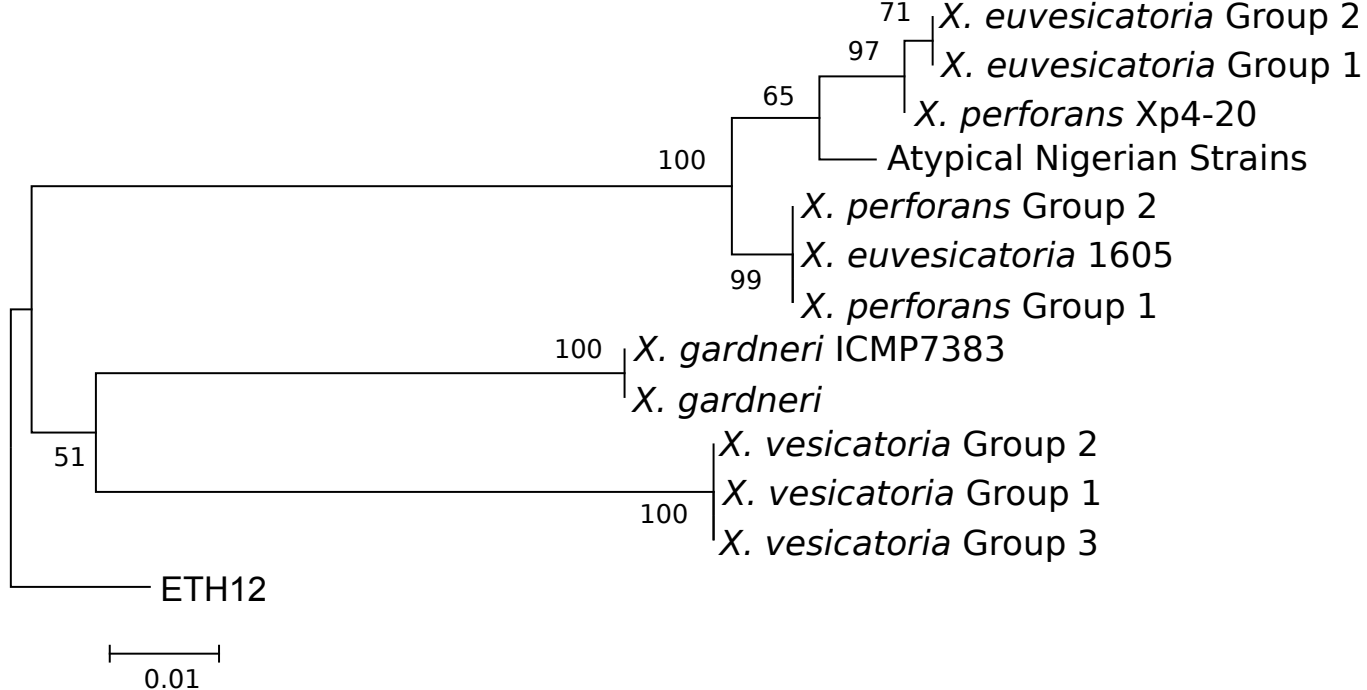


Figure S2-F: Maximum likelihood phylogenetic distribution of clone corrected *Xanthomonas* strains using *lepA* gene