

Supplementary Material

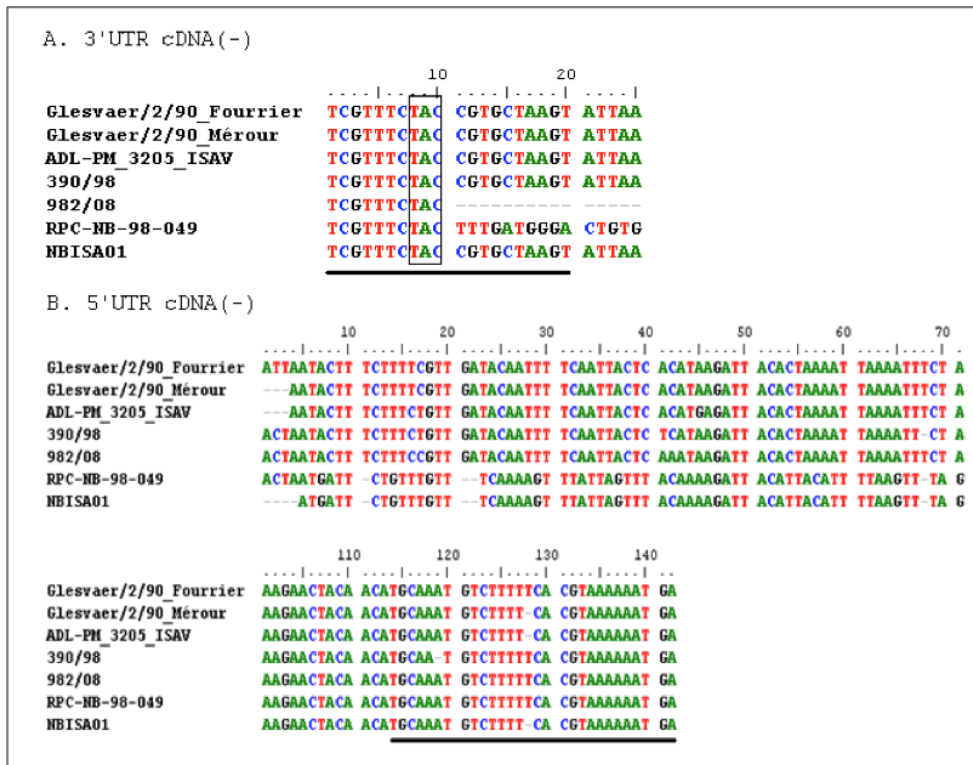


Figure S1. Sequence alignments of the 3' and 5' UTR of segment 6 of different isolated of ISAV. A. Alignments of the region 3' UTR and 5' UTR of segment 6 from different ISAV isolates.

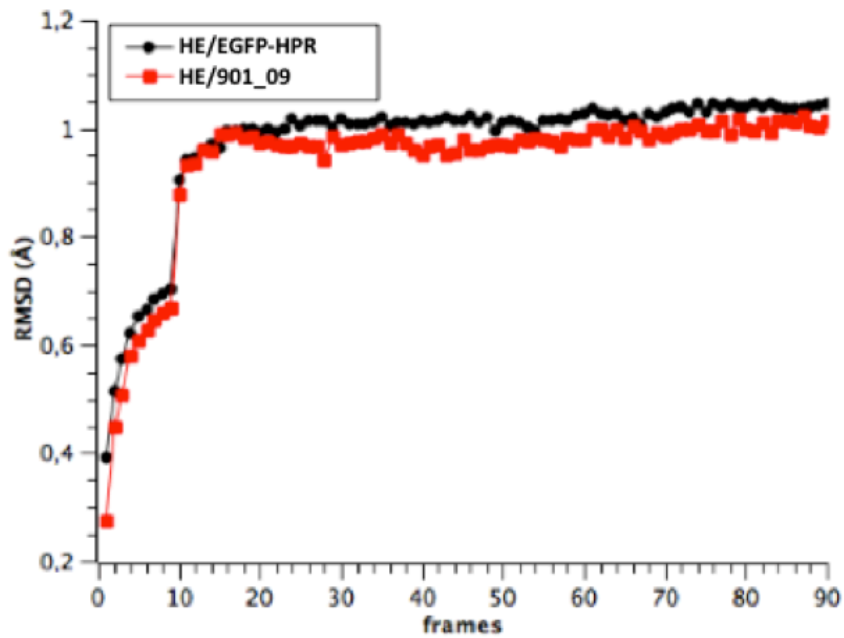


Figure S2. Root mean square deviation (RMSD) values of HE-EGFP-insert1 (black) and HE-WT (red) embedded into POPC membrane by Molecular Dynamics.

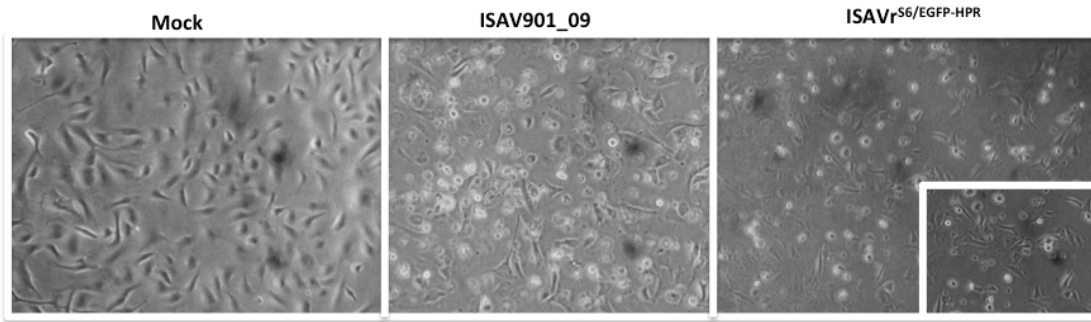


Figure S3. Cytopathic effect of passage 4 of rISAV^{S6/EGFP-HPR} in ASK cells.

Mock corresponds to uninfected ASK cell, ISAV901_09 indicates ASK cell infected with WT ISAV901_09 and rISAV^{S6/EGFP-HPR} correspond to ASK cell infected with the EGFP rISAV (x200). Second rISAV^{S6/EGFP-HPR} infected monolayer is show as inserted figure in right panel. Pictures were taken on an inverted microscope at day 3 post-infection at an MOI of 5.

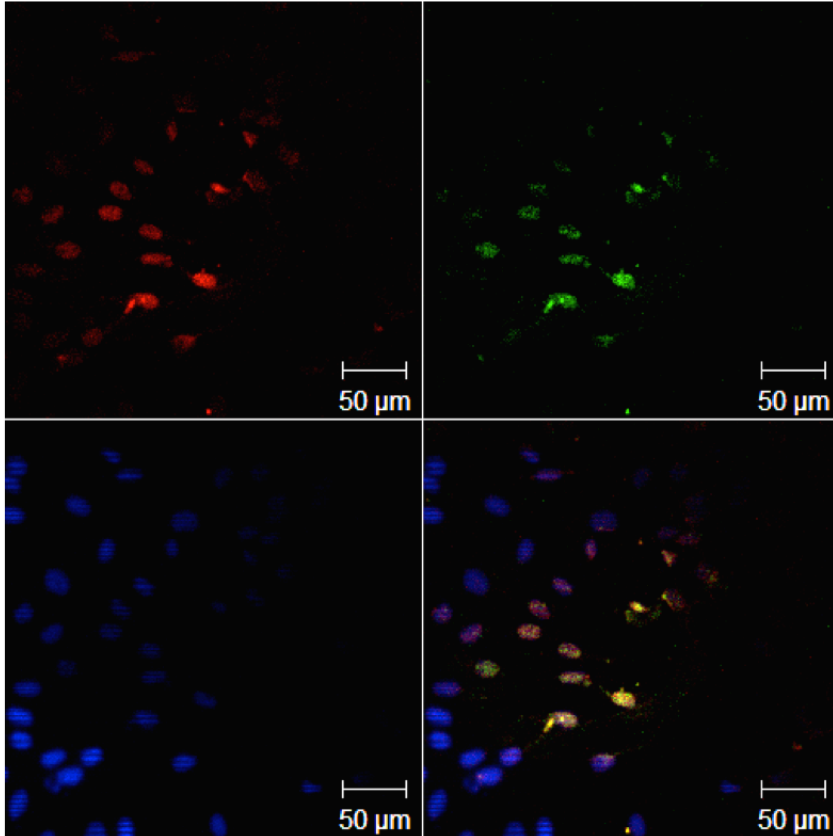


Figure S4. Colocalization of EGFP and HE proteins in ASK cells infected with rISAV^{S6/EGFP-HPR}. ASK cells infected with passage 4 of rISAV^{S6/EGFP-HPR} at day 3 post infection were analyzed by confocal microscopy. EGFP is shown in green and HE is shown in red. Blue depicts the nuclei of cells stained with DAPI. Colocalization is shown in yellow in the merged image (right bottom panel).