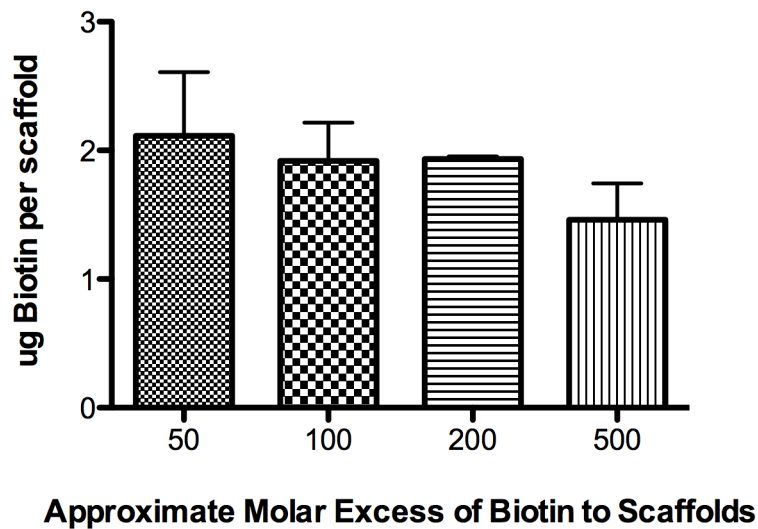
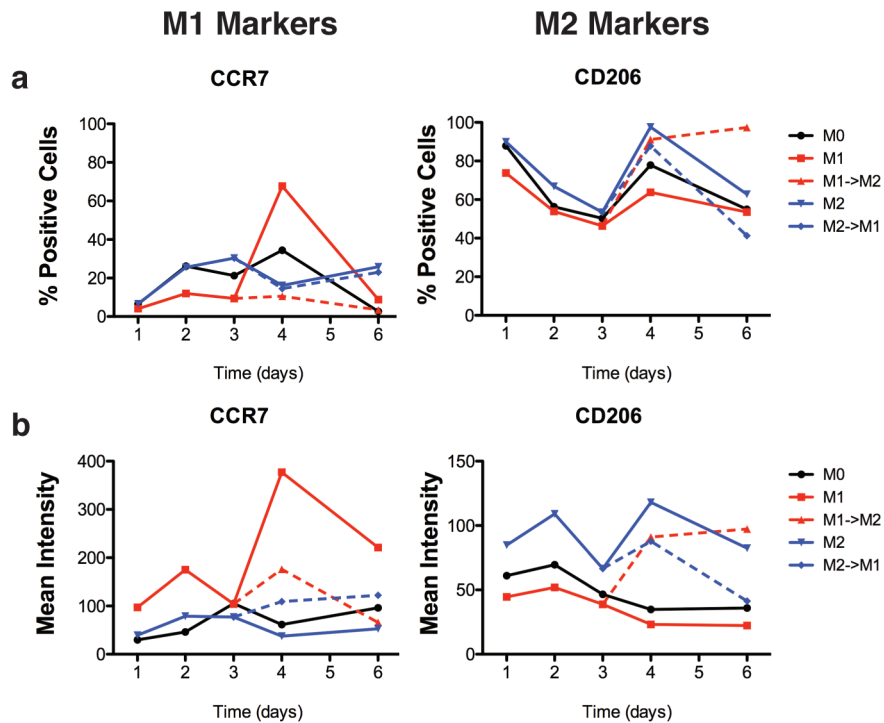


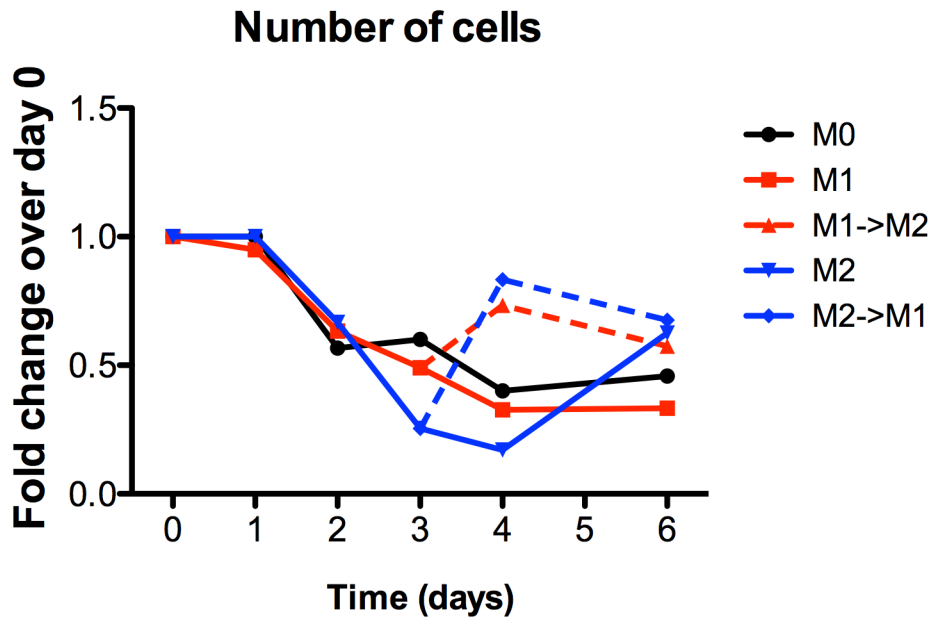
## Supplemental data



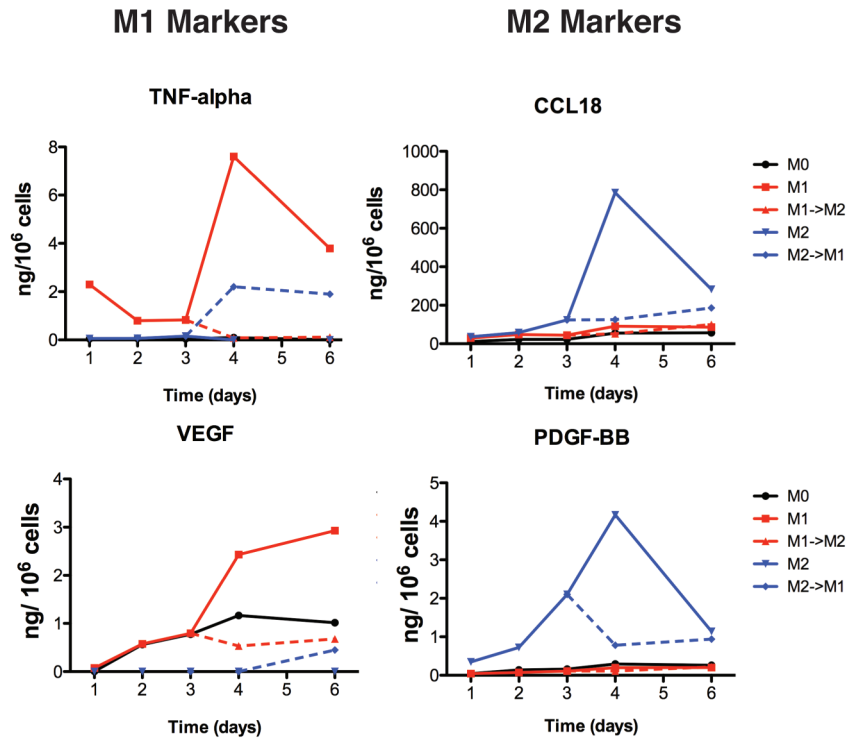
**Figure S1: Amount of biotin bound to each scaffold.** Data are shown as a function of the molar excess that was added, determined using the HABA/avidin binding assay.



**Figure S2: Quantitation of macrophage staining.** (a) Percentage of the population staining positively for CCR7 or CD206. (b) mean fluorescent intensity per cell of CCR7 and CD206, determined using flow cytometry.

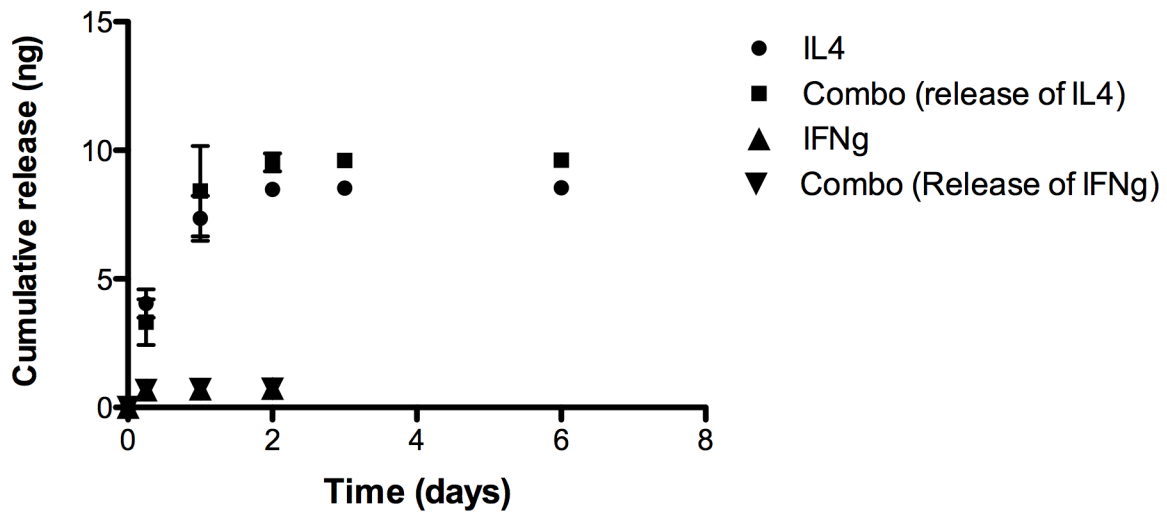


**Figure S3: Numbers of viable cells.** Data are shown as a function of time, and normalized to the starting numbers. Cells were counted using trypan blue exclusion.

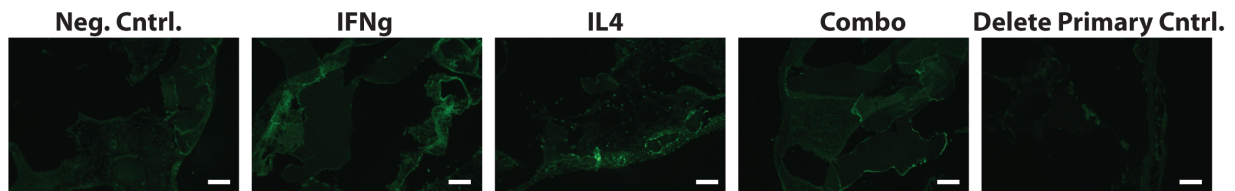


**Figure S4: Total proteins secreted into the media.** Data are normalized to the number of viable cells at each time point.

### Cumulative Release of IL4 and IFN-gamma



**Figure S5: Cumulative release of IFN-gamma and IL4.** Data are shown for IFNg, IL4, and Combo scaffolds. The release profiles of IFN-gamma or IL4 from the Combo scaffolds were not different from the control IFNg and IL4 scaffolds.



**Figure S6: *In vivo* studies.** Immunohistochemical staining for IL4 on scaffolds that were implanted subcutaneously in mice for 2 weeks.