

Figure S1

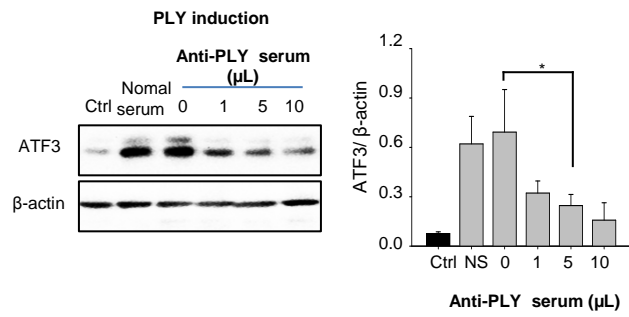


Figure S2

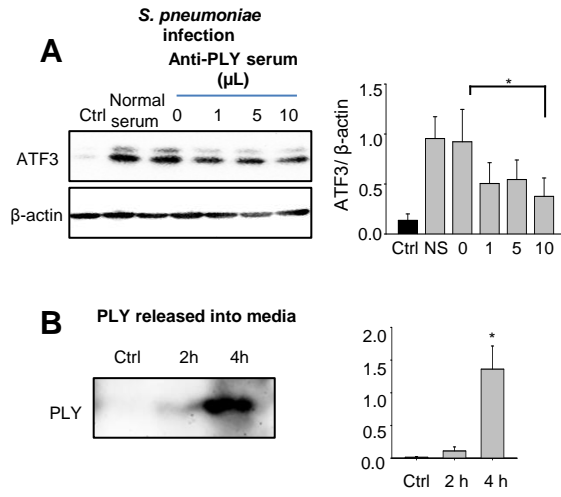


Figure S3

Supplement Figure legends

Figure S1. PLY-dependent ATF3 and TNF- α induction is not mediated by TLR2.

RAW 264.7 cells were transfected with siTLR2 for 24 hr and then incubated with 500 ng/ml of PLY for 0, 1, 2, or 3 hr. Subsequently, the cell lysates were analyzed by Western blotting. The data are representative of two independent experiments.

Figure S2. Impairment of ATF3 induction by PLY antibody.

RAW 264.7 cells were incubated with purified PLY in the presence or absence of anti-PLY serum for 2 hr. Cell lysates were collected for a Western blot analysis. Dose-dependent impairment of ATF3 induction was detected. The data are representative of three independent experiments and analyzed by one-way ANOVA. Data are shown as mean \pm S.D. * $P < 0.05$.

Figure S3. Release of PLY into the culture media by pneumococcal infection.

(A) RAW 264.7 cells were infected with *S. pneumoniae* in the presence or absence of anti-PLY serum for 2 hr. Cell lysates were collected for a Western blot analysis. A dose-dependent decrease in the ATF3 level was detected. (B) RAW 264.7 cells were infected with *S. pneumoniae* for 2 and 4 hr. Cell supernatants were collected, and proteins were precipitated by 10% Trichloroacetic acid and used for Western blots to detect PLY. The data are representative of three independent experiments and were analyzed by one-way ANOVA. Data are shown as mean \pm S.D. * $P < 0.05$.