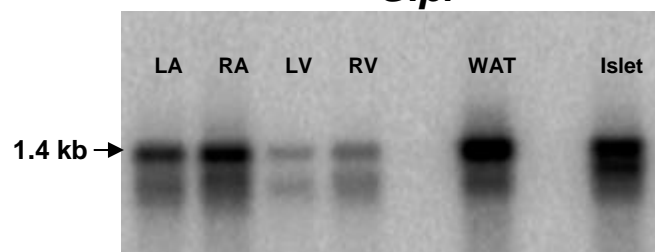
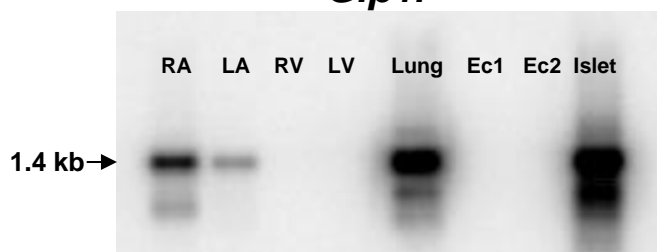
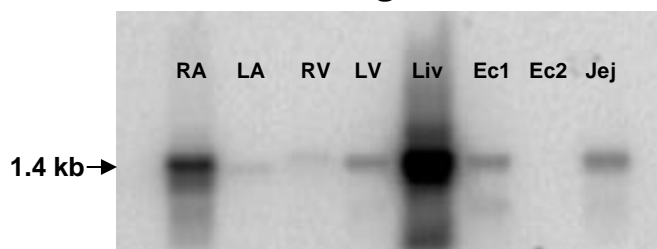
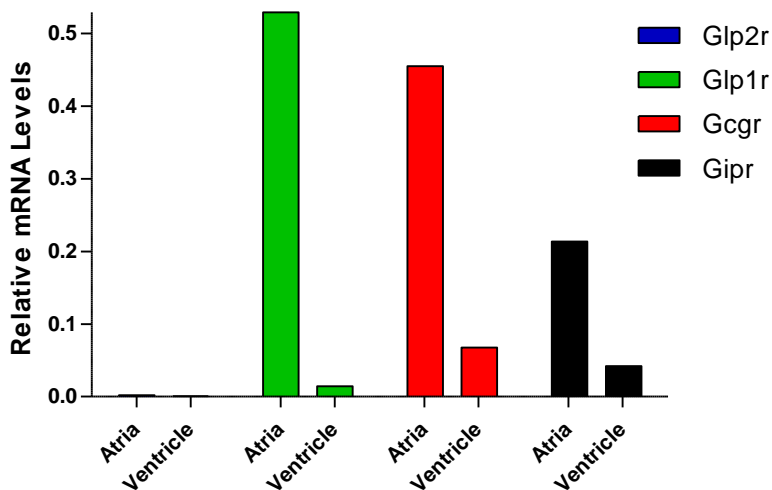


A

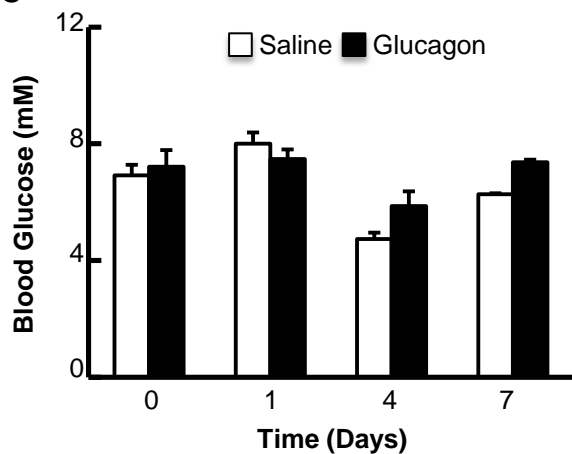
*Glp1r**Gipr**Gcgr**Glp2r*

B Atria and Ventricle mRNA Levels

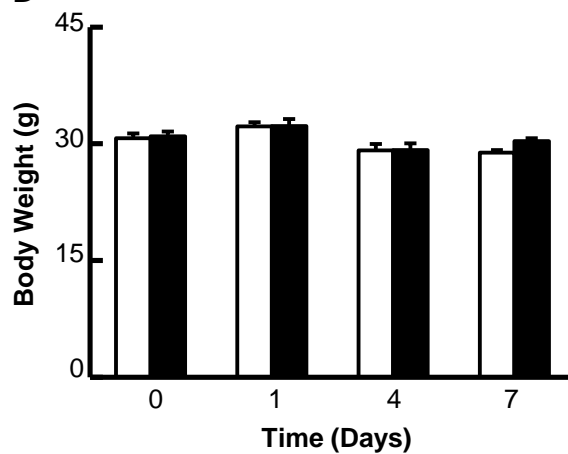
B

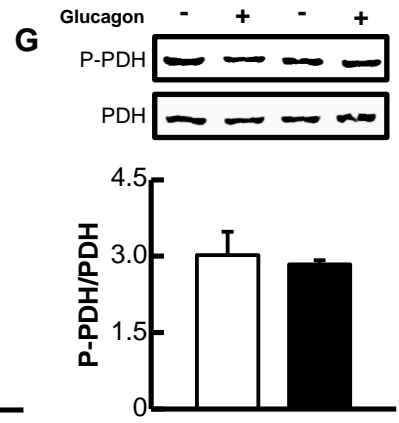
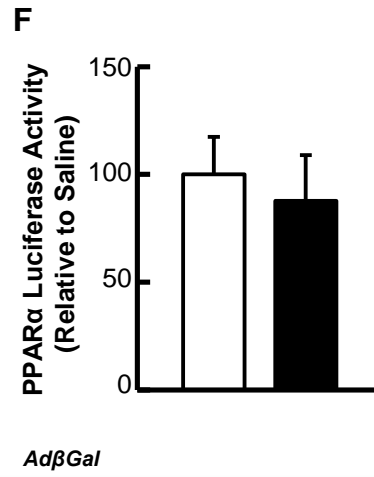
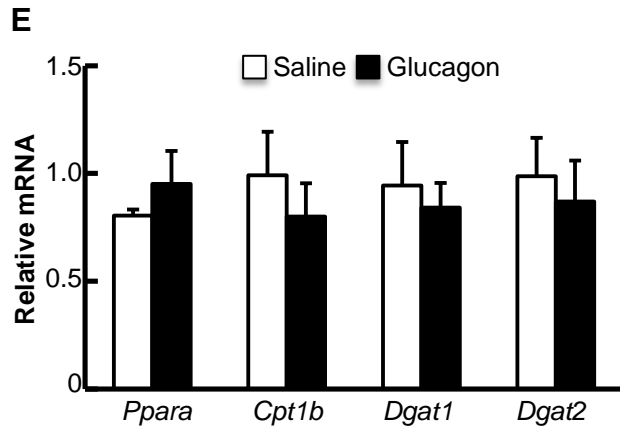


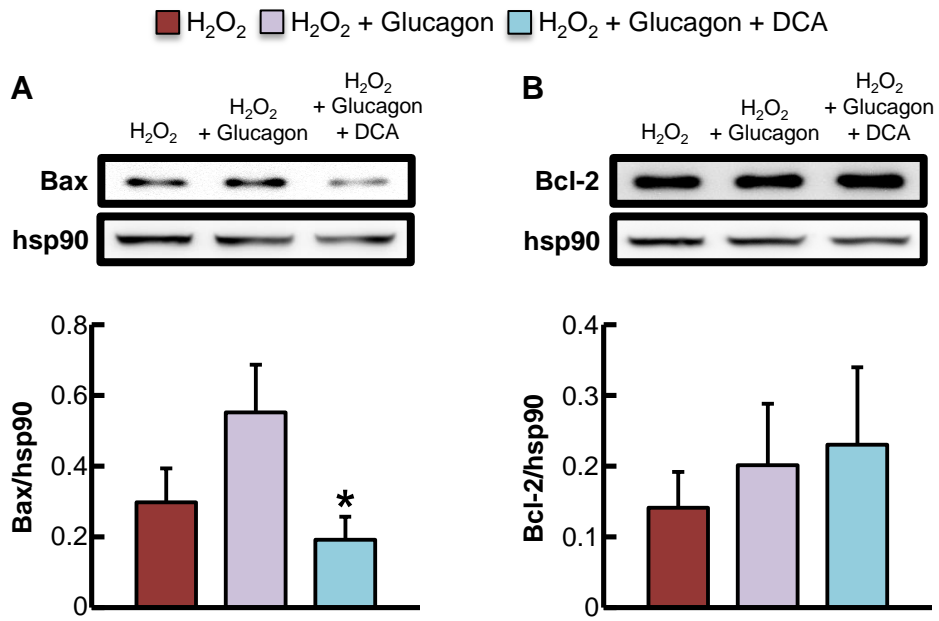
C



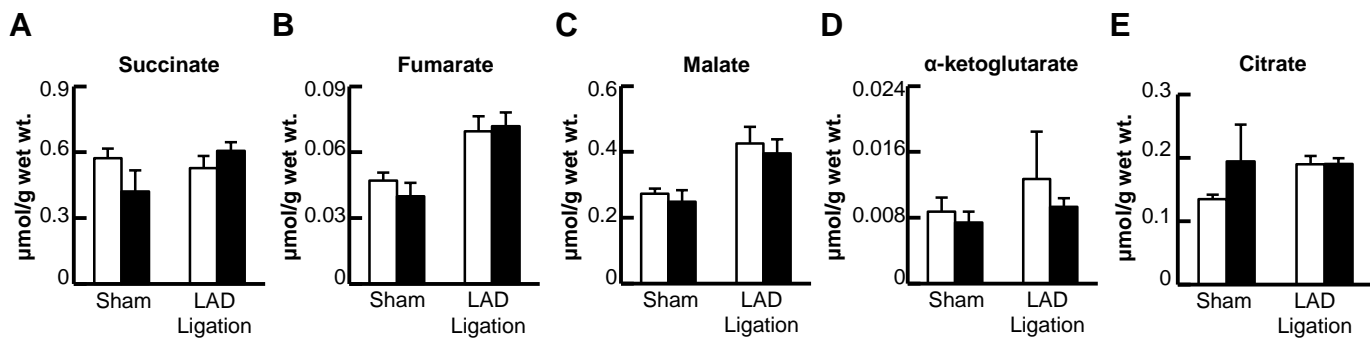
D



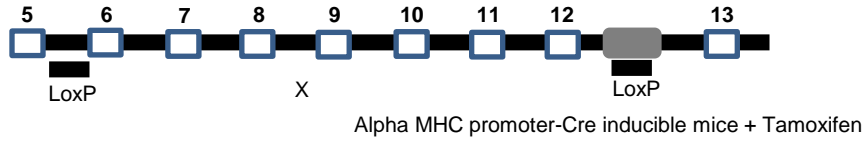
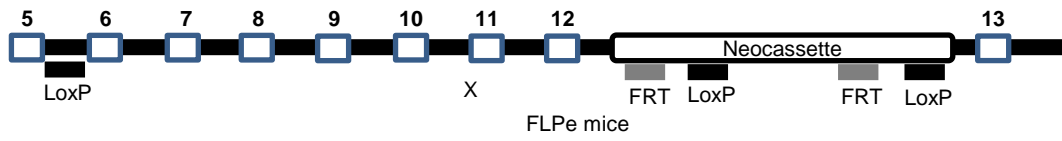




□ Saline ■ Glucagon

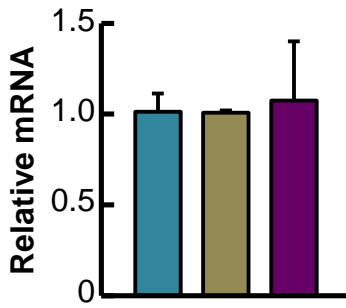


A

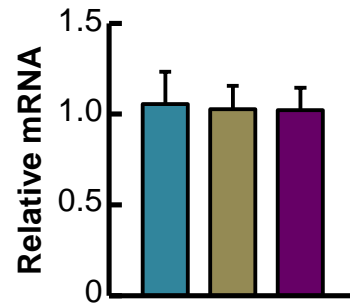


■ *Gcgr*^{Flox} ■ *αMHC*^{Cre} ■ *Gcgr*^{CM-/-}

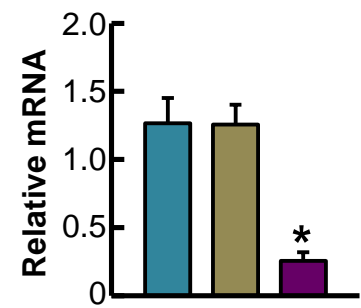
B

Liver Gcgr

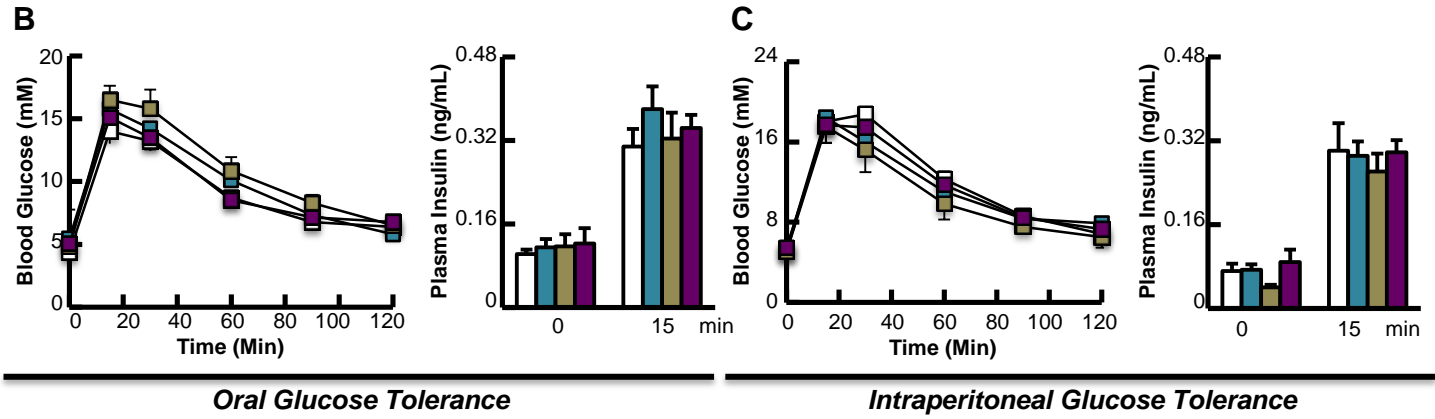
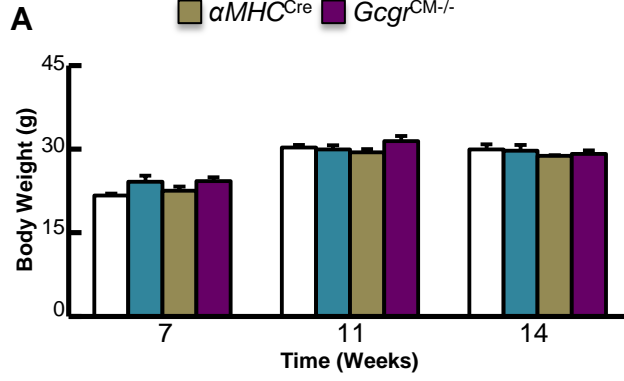
C

Kidney Gcgr

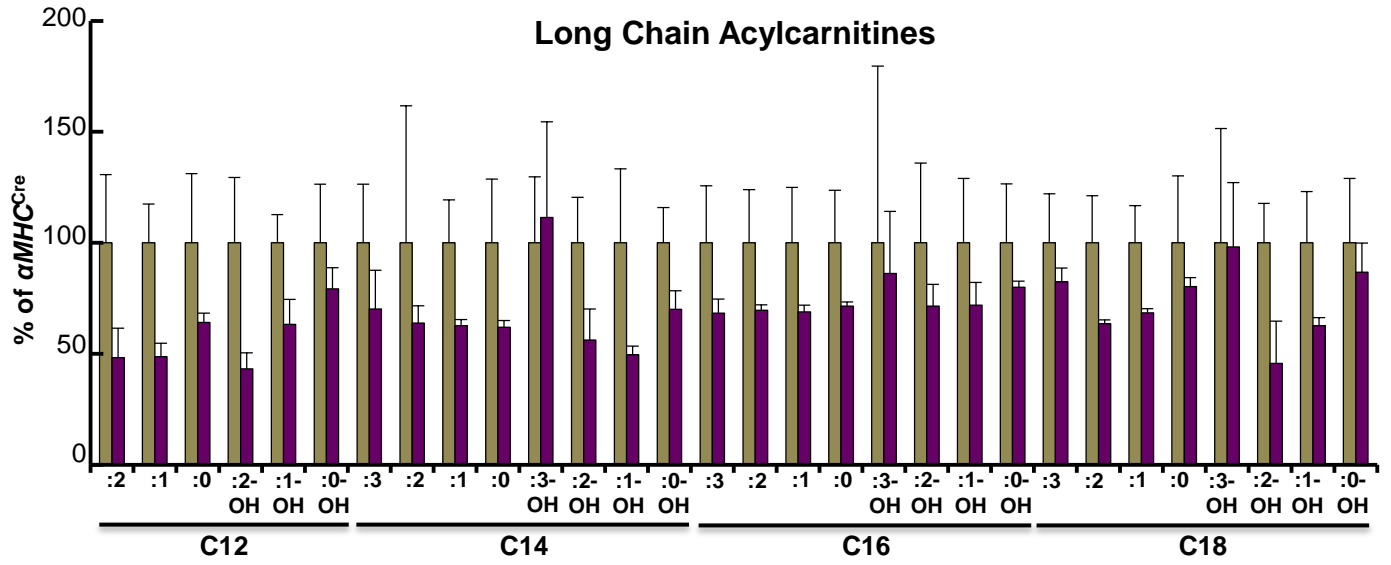
D

Heart Gcgr

WT
 Gcgr^{Flox}
 α MHC^{Cre}
 Gcgr^{CM-/-}



α MHC^{Cre} $Gcgr^{CM-/-}$



Sham (Aerobic) Hearts from Mice Fed a High Fat Diet (45% Kcal) for 6 Months