

Wright et al., <http://www.jcb.org/cgi/content/full/jcb.201407101/DC1>

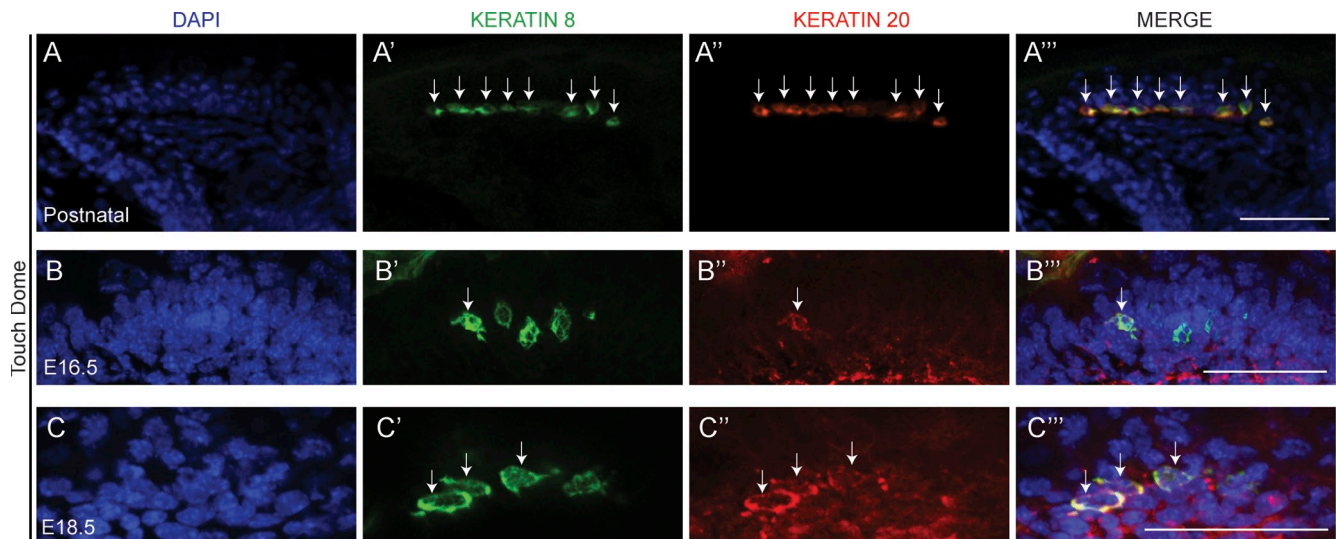


Figure S1. All postnatal and most embryonic K8⁺ Merkel cells coexpress K20. (A–C''') Back skin from postnatal (A–A'''), E16.5 (B–B'''), and E18.5 (C–C''') mice immunostained for K8 (A', B', and C') and K20 (A'', B'', and C''), demonstrating coexpression (arrows). Bars, 50 μm.

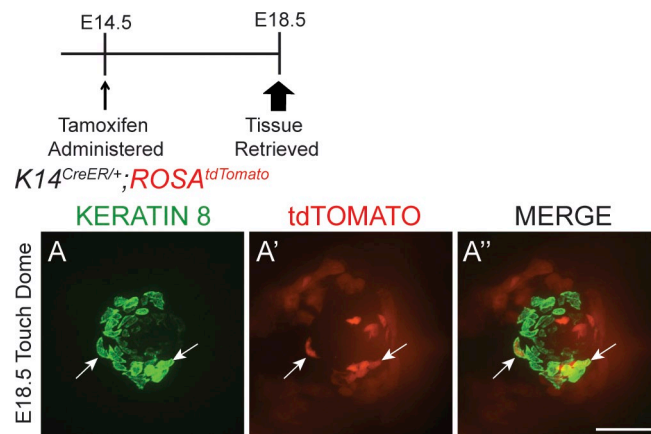


Figure S2. K14⁺ cells give rise to K8⁺ cells at E14.5. (A–A'') Confocal image of a whole-mount touch dome from an E18.5 *K14^{CreER/+}; ROSA^{tdTomato}* mouse given tamoxifen at E14.5 and immunostained for K8 (A). Arrows mark double-labeled cells. Bar, 50 μm.

Atoh1^{CreER-T2/+};Atoh1^{GFP/+};ROSA^{tdTomato/+}

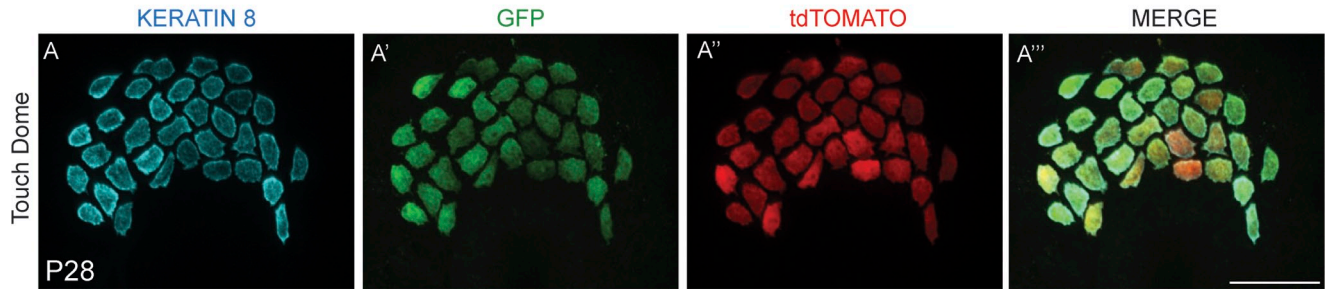


Figure S3. *Atoh1^{GFP}* and *Atoh1^{CreER-T2/+};ROSA^{tdTomato}* label the same K8⁺ cells. Confocal image of a tamoxifen-treated P28 *Atoh1^{GFP/+};Atoh1^{CreER-T2/+};ROSA^{tdTomato}* mouse immunostained for K8 (A) and GFP (A'), demonstrating coexpression of GFP and endogenous tdTomato (A'') in K8⁺ cells. Bar, 50 μ m.

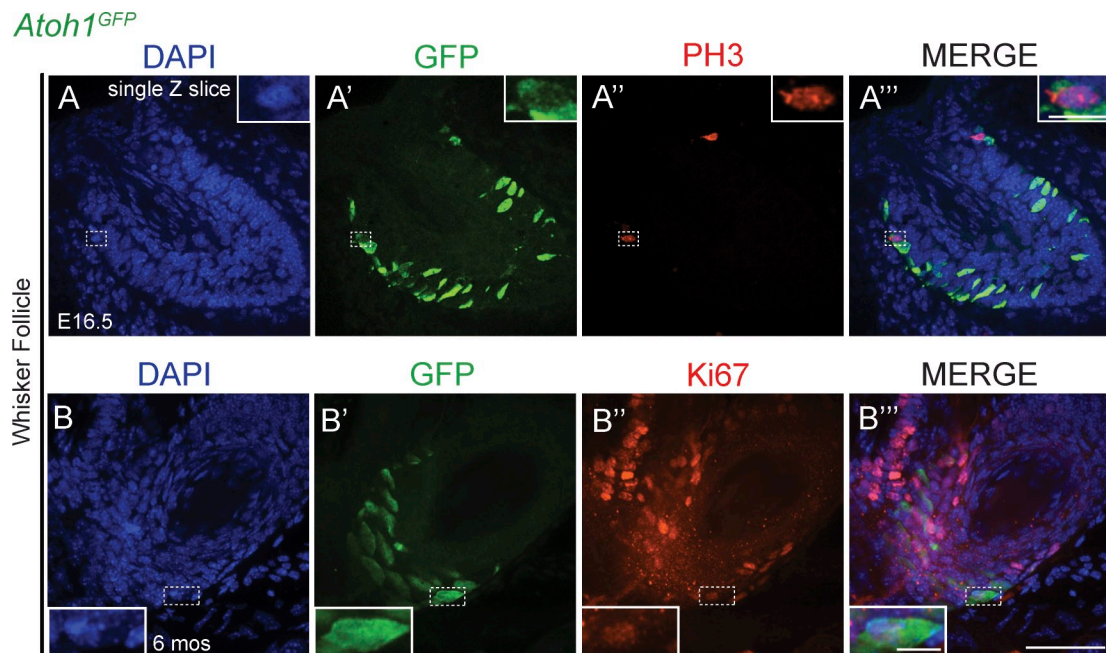


Figure S4. Proliferative *Atoh1⁺* cell in embryonic and adult whisker follicles. (A–A''') A single confocal z slice from an E16.5 whisker follicle immunostained for GFP and PH3. Insets show a GFP⁺/PH3⁺ cell. (B–B''') Single confocal z slice from a 6-mo-old *Atoh1^{GFP}* whisker follicle immunostained for GFP (B') and Ki67 (B''). Insets are of double-positive cells. Bars: (main images) 50 μ m; (A–B''', insets) 10 μ m.