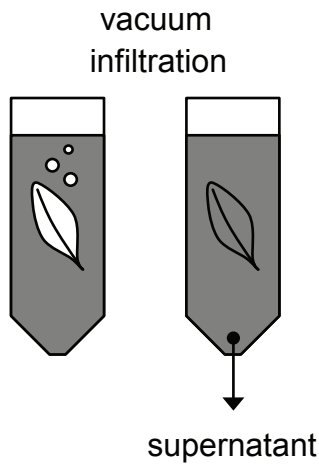
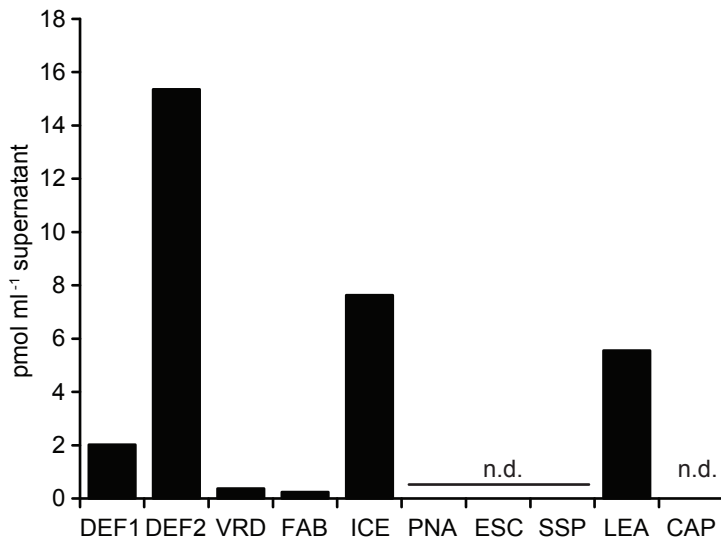
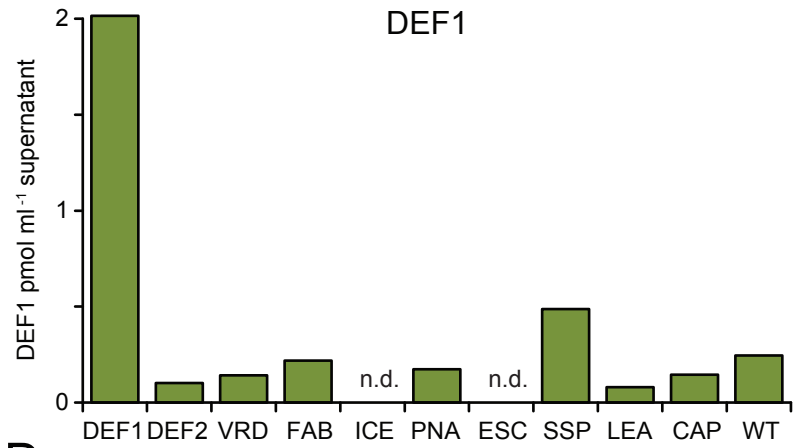
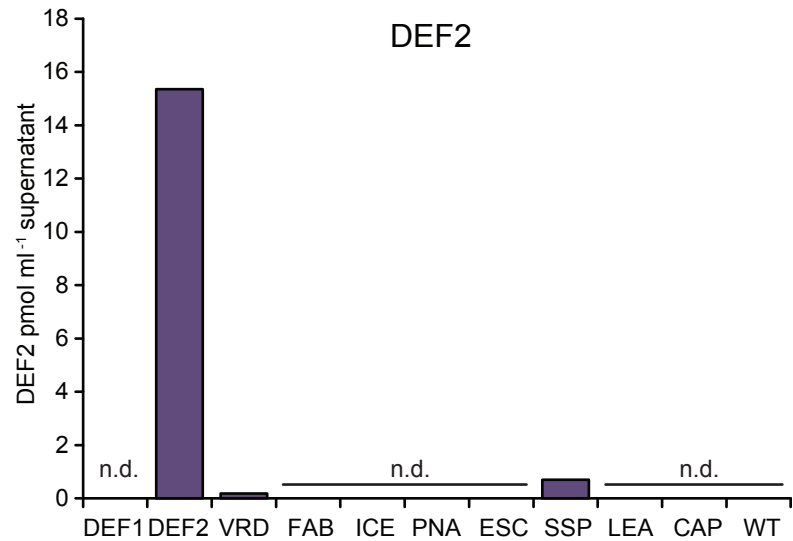


A**B****C****D**

Additional file 6: Determination of AMP abundance in the supernatant.

(A) The supernatants after vacuum infiltration (MES, pH 5.5) were SPE desalted, spiked with BSA and analyzed using nanoUPLC-MS^E, n.d. = not detected; (B) Comparison of all peptides from the supernatant of the respective genotype. (C) Comparison of DEF1 abundance in the supernatant. (D) Comparison of DEF2 abundance in the supernatant.