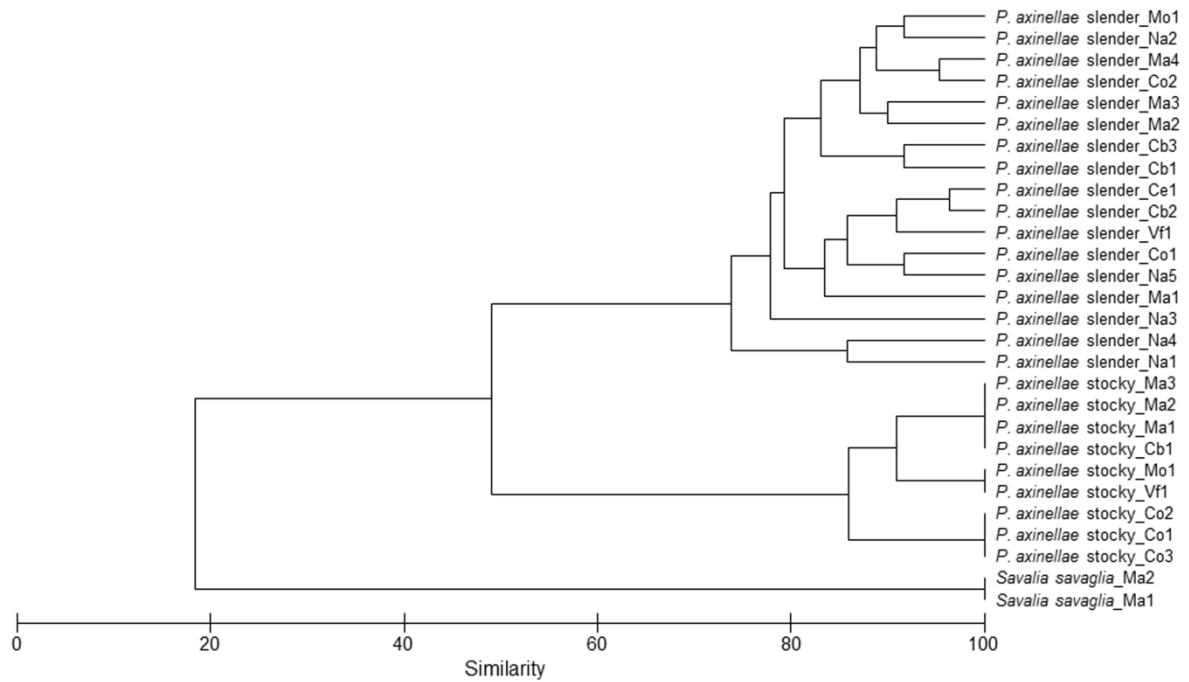


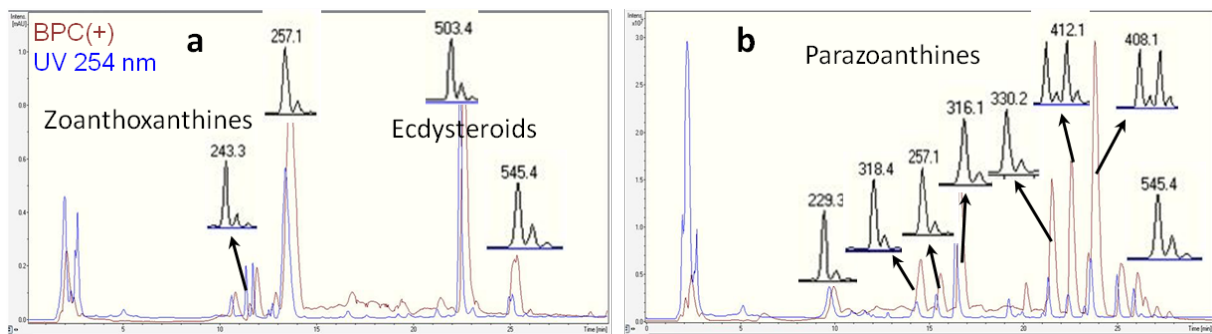
Supporting Information for

Metabolomic profiling reveals deep chemical divergence between two morphotypes of the zoanthid *Parazoanthus axinellae*

Nadja Cachet, Grégory Genta-Jouve, Julijana Ivanisevic, Pierre Chevaldonné, Frédéric Sinniger, Gérald Culioli, Thierry Pérez & Olivier P. Thomas



Hierarchical Cluster Analysis of the metabolomic profiles of both morphotypes of *P. axinellae*.



Example of HPLC-UV-MS profiles for a) the stocky morphotype and b) the slender morphotype