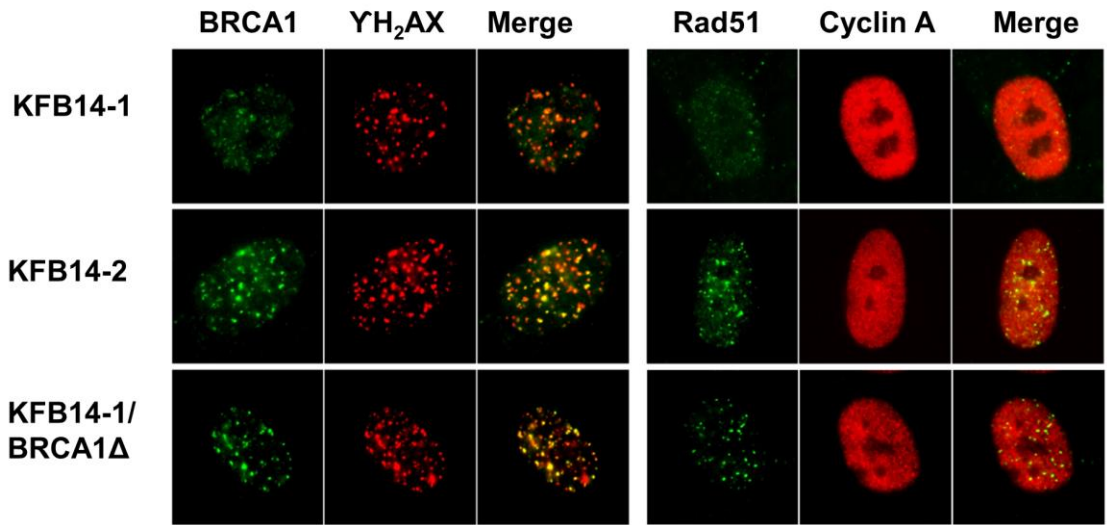


**Supplement Figure 1**



**Supplementary Figure 1.** BRCA1 mutations in proband derived cells lead to impaired MMC induced DNA damage signaling. Immunofluorescence showed reduced BRCA1 and Rad51 accumulations at the DNA damage sites in KFB14-1 cells after exposure to MMC (0.5  $\mu$ M) for 24 hrs. Complementation of KFB14-1 cells with BRCA1 $\Delta$ 512-1283 restored the presence of BRCA1 and Rad51 foci. KFB14-1/BRCA1 $\Delta$ , KFB14-1 cells complemented with BRCA1 $\Delta$ 512-1283.