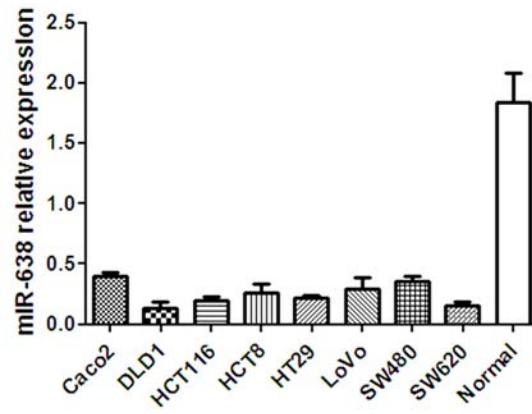
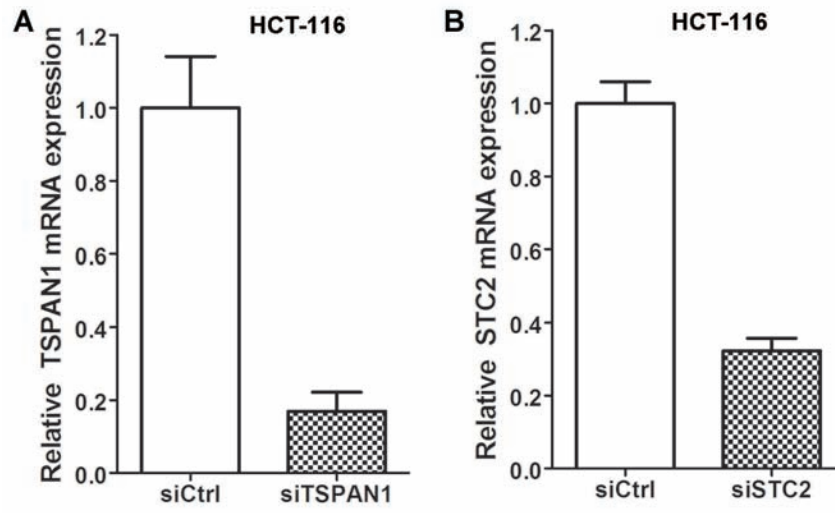


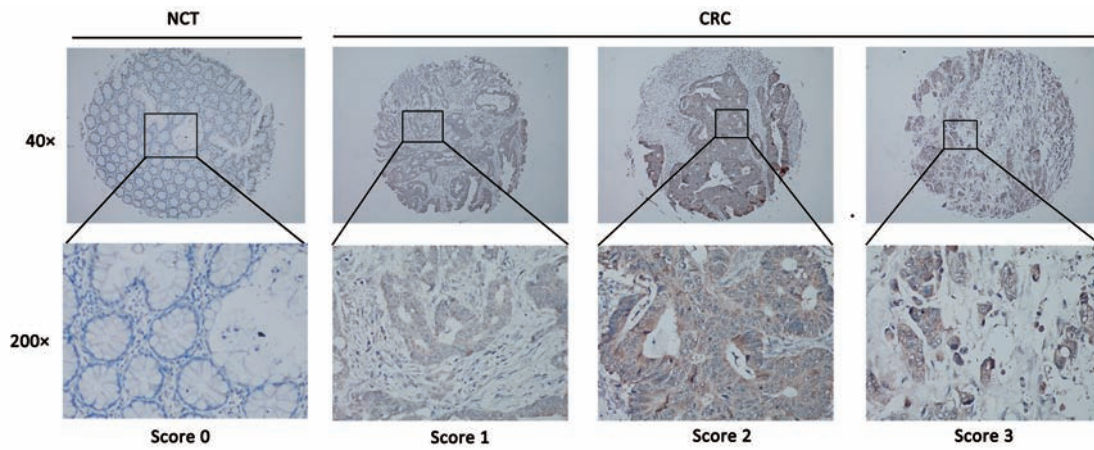
SUPPLEMENTARY FIGURES AND TABLES



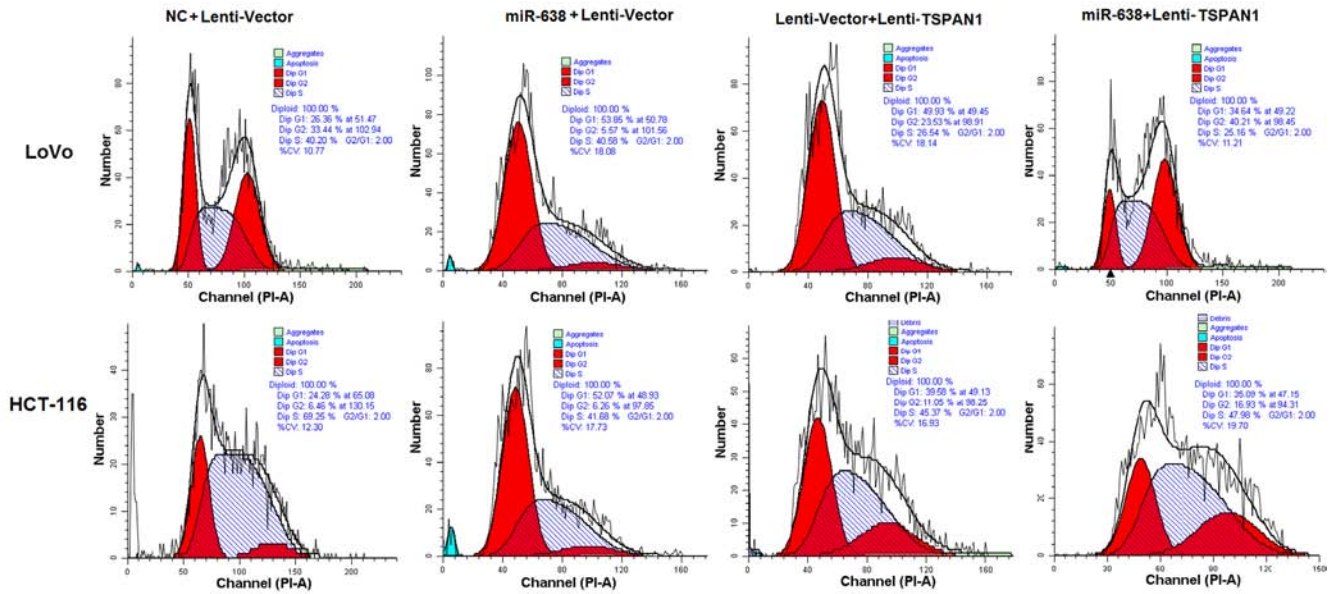
**Supplementary Figure S1: The expression of miR-638 in CRC cell lines.** Five samples of normal colon epithelium mucosae were pooled and subjected to quantitation of miR-638 expression (Normal).



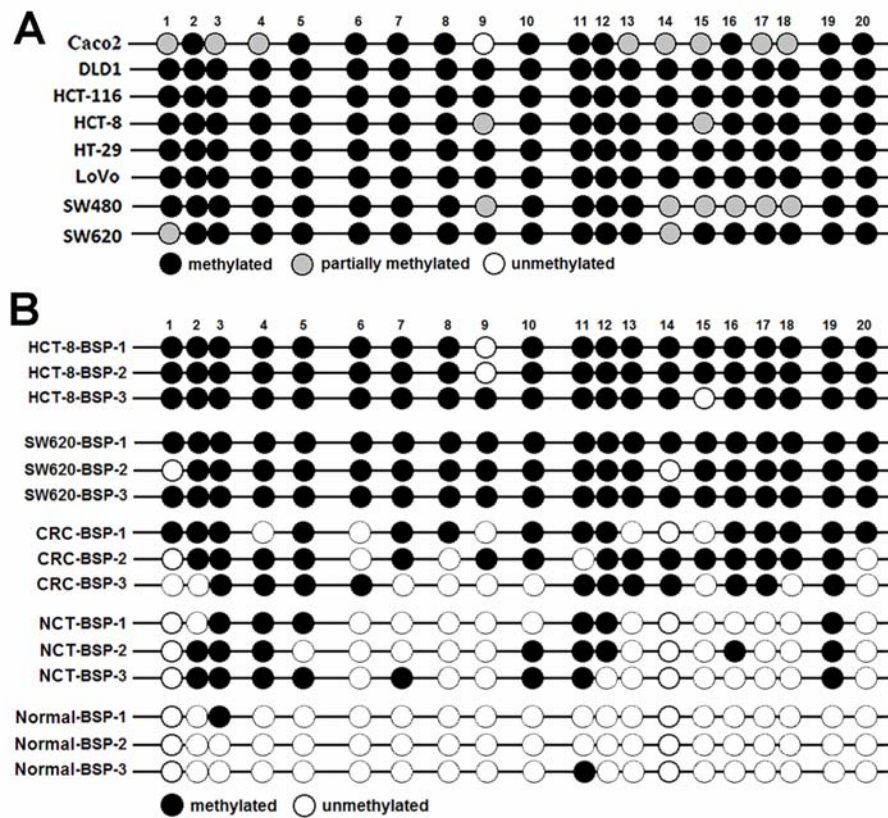
Supplementary Figure S2: Knockdown of TSPAN1 (A) and STC2 (B) using TSPAN1- or STC2- specific siRNAs in HCT-116 cells.



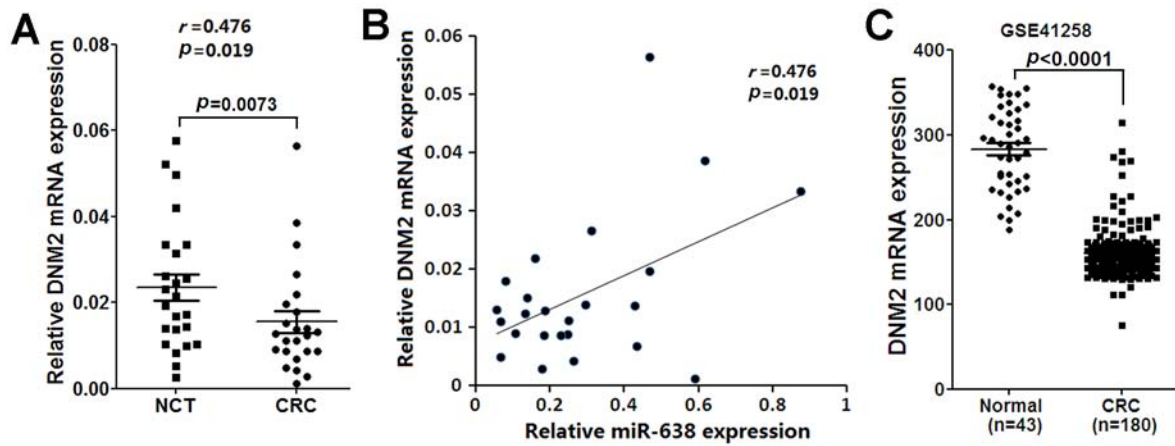
**Supplementary Figure S3: Immunohistochemical staining of TSPAN1 in the CRC and NCT samples.** TSPAN1 protein is mainly localized in the cytoplasm. The scores (0, 1, 2 and 3) are based on the intensity of the brown staining.



**Supplementary Figure S4: Representative graphs of cell cycle analysis.** Cell cycle analyses were performed in LoVo and HCT-116 cells transfected with miR-638, TSPAN1(ORF without 3'UTR) or vector control.



**Supplementary Figure S5: Representative results of bisulfite-sequencing PCR (BSP).** (A) Schematic representation of the methylation status of the CpG island (including 20 CpG sites) as detected in the indicated CRC cell lines. (B) Three positive clones were selected from T-A cloning of BSP products from CRC cells (HCT-8, SW480) or clinical tissue samples (CRC, NCT or normal colonic epithelia) and subjected to sequencing.



**Supplementary Figure S6: DNM2 mRNA expression is downregulated in CRC.** (A) DNM2 mRNA expression was detected by qRT-PCR in 24 paired CRC and adjacent noncancerous tissues (NCTs). (B) Relative DNM2 mRNA expression was positively correlated with miR-638 expression in CRC tissues. (C) DNM2 mRNA expression was downregulated in CRC compared with NCT in a test cohort. The data of DNM2 mRNA expression was obtained from a published CRC microarray data set (GSE41258).

**Supplementary Table S2. Patients' information**

Characteristics	Colorectal cancer* (n=146)	Colorectal cancer# (n=113)	Colorectal cancer <sup>§</sup> (n=103)
<b>Gender</b>			
Male	83	68	61
Female	63	45	42
<b>Age at diagnosis</b>			
≥58	76	65	60
<58	70	48	43
<b>TNM stage</b>			
I	20	17	16
II	45	32	29
III	61	50	45
IV	20	14	13
<b>Nodal status</b>			
Positive	79	62	56
Negative	67	51	47
<b>Tumor size (cm)</b>			
<5	87	66	60
≥5	59	47	43
<b>Tumor location</b>			
Rectum	62	50	42
Distal colon	38	30	28
Proximal colon	46	33	33
<b>Grading</b>			
G1	6	4	4
G2	114	88	79
G3	26	21	20

\*These cases were subjected to the detection of TSPAN1 protein.

#These cases were subjected to the detection of miR-638 expression.

§Both the miR-638 and TSPAN1 expression data were available in 103 cases.