

## Supplementary Table and Figures

**Institutional Diagnosis**

Malignant glioma, unclassified	3	5.0
Anaplastic astrocytoma	39	65.0
Other eligible diagnoses	3	5.0
Ineligible diagnosis (Astrocytoma, grade 1)	1	1.7
Glioblastoma multiforme	14	23.3
<b>Total</b>	<b>60</b>	<b>100.0</b>

**Central Review**

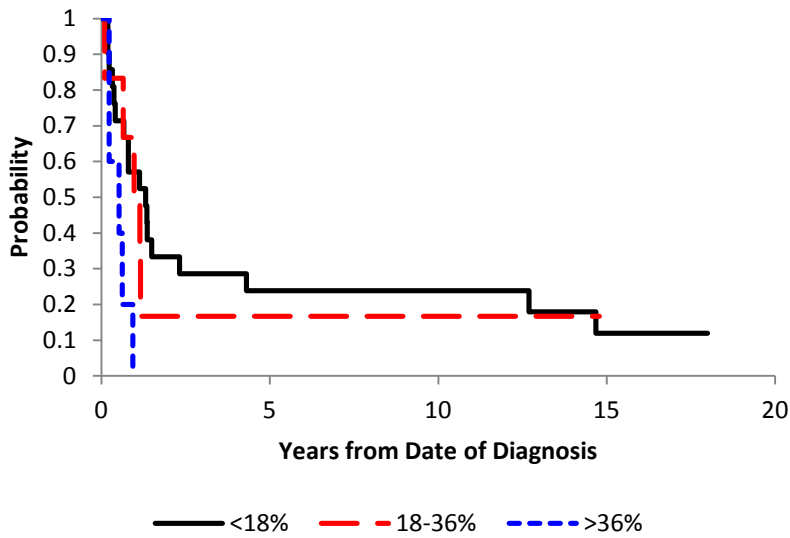
Anaplastic astrocytoma	22	36.7
Discordant (JPA, grade 1)	6	10.0
Discordant (Astrocytoma, grade 2)	13	21.7
Discordant (Low-grade glioma, no consensus)	1	1.7
Discordant (Desmoplastic glioma, grade 2)	1	1.7
Glioblastoma multiforme	12	20.0
Other (Anaplastic mixed glioma, grade 3)	2	3.3
Other (Anaplastic oligodendroglioma, grade 3)	2	3.3
Ineligible diagnosis	1	1.7
<b>Total</b>	<b>60</b>	<b>100.0</b>

Supplementary Table I. Tumor Pathology: Institutional Diagnosis versus Central Review

Supplementary Table and Figures

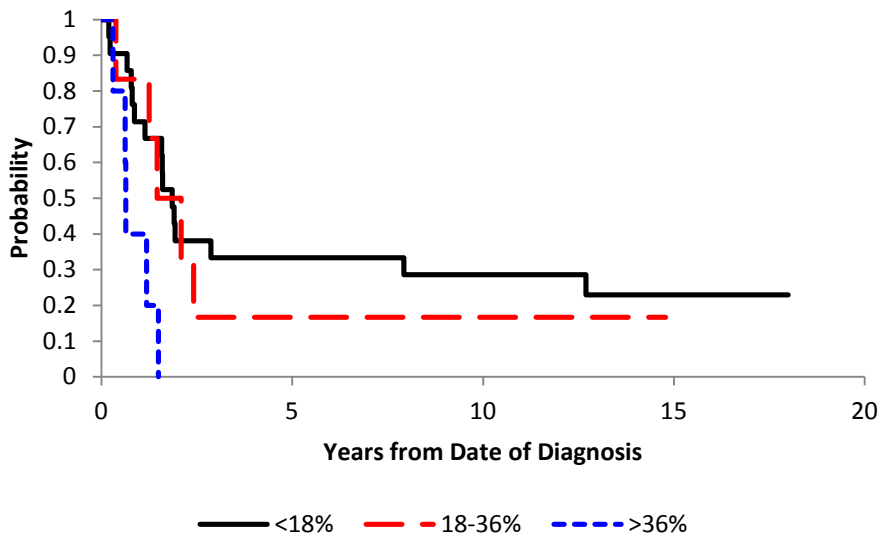
**A**

### Progression-free Survival



**B**

### Overall Survival

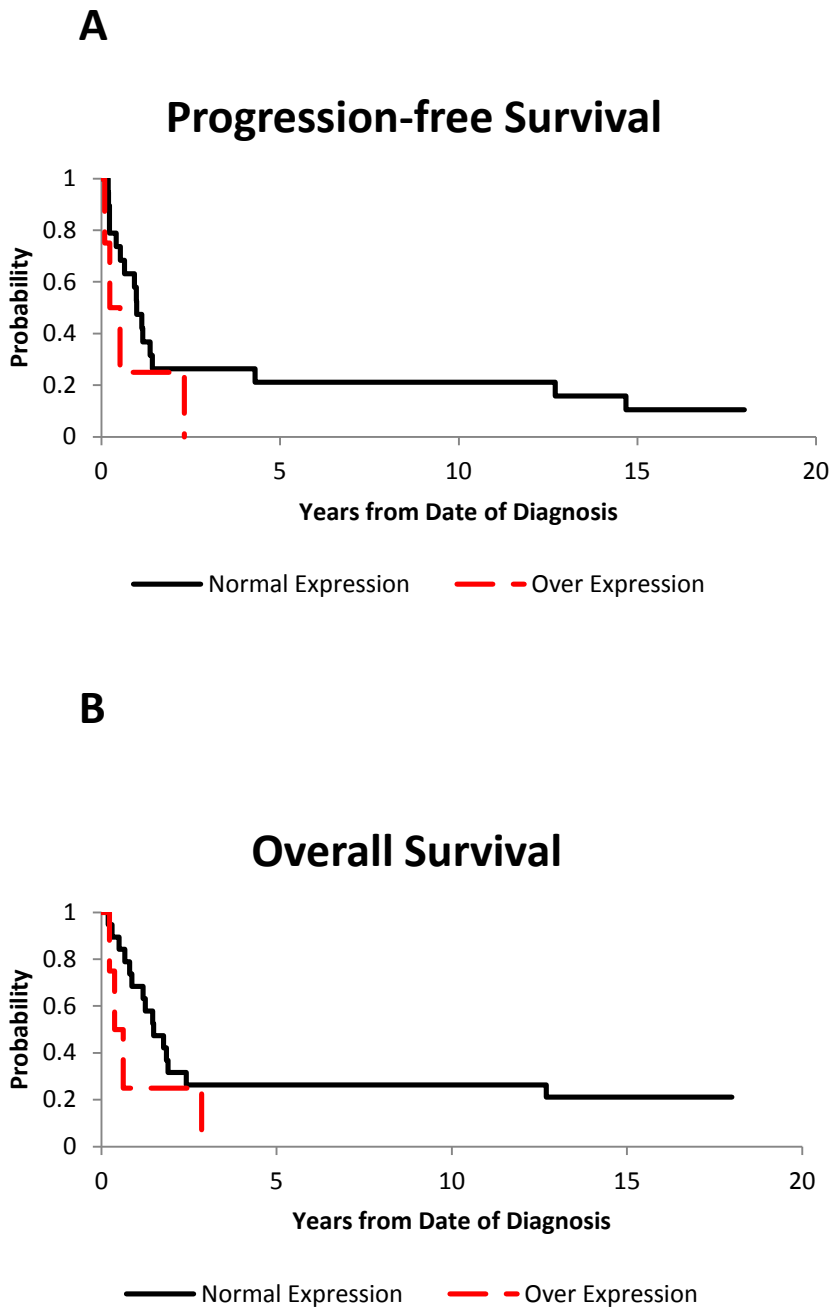


Supplementary Table and Figures

**Supplementary Figure 1**

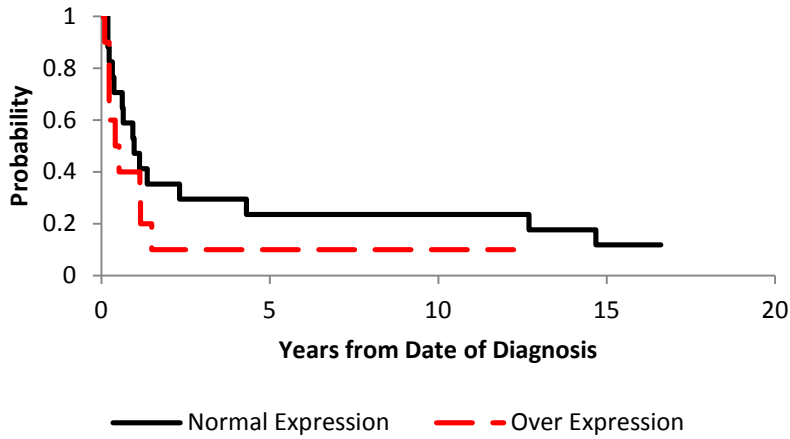
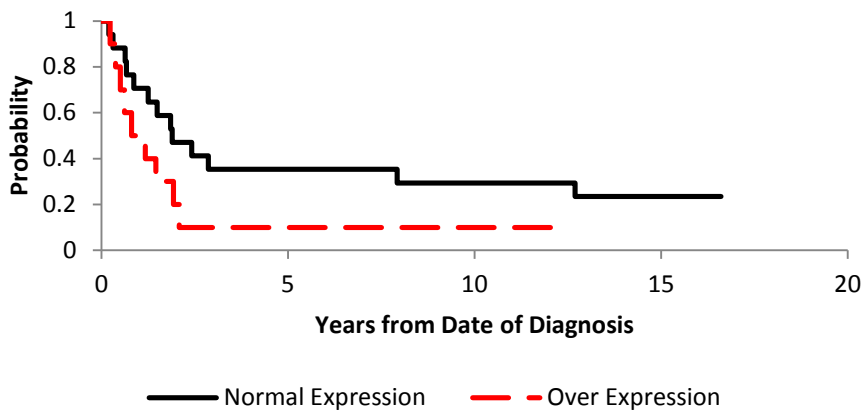
Proliferation indices (MIB-1 scores) and survival curves for (A) PFS ( $p=0.031$ ) and (B) OS ( $p=0.012$ ). MIB scores were stratified into three groups: 0 (0-18%, solid line), 1 (18-36%, dashed line) and 2 ( $> 36\%$ , dotted line).

## Supplementary Table and Figures

**Supplementary Figure 2**

MGMT expression status and survival curves for (A) PFS ( $p=0.19$ ) and (B) OS ( $p=0.13$ ). MGMT expression was stratified into two groups: 0 (no over-expression or normal, MGMT score of 0, 1 or 2, black line) and 1 (over-expression, MGMT score of 3 or 4, dotted line).

## Supplementary Table and Figures

**A****Progression-free Survival****B****Overall Survival****Supplementary Figure 3**

p53 score and survival curves for (A) PFS ( $p=0.27$ ) and (B) OS ( $p=0.099$ ). p53 scores were stratified into two groups: 0 (no over-expression or normal, p53 score of 0, 1 or 2, black line) or 1 (over-expression, p53 score of 3 or 4, dotted line).