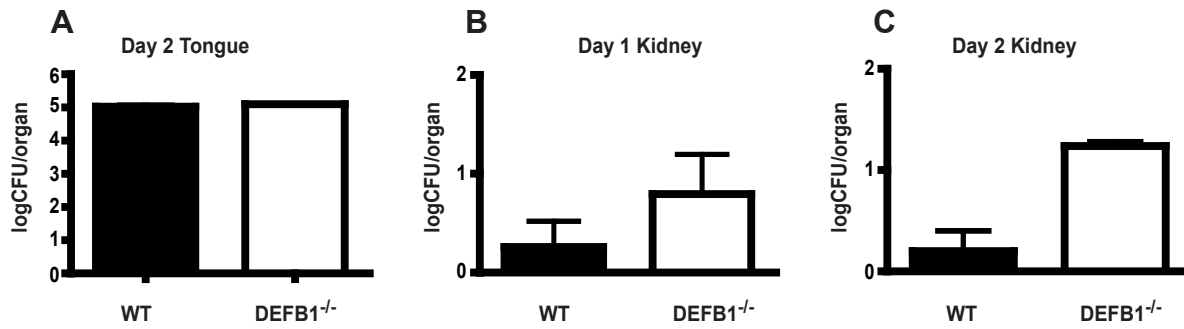


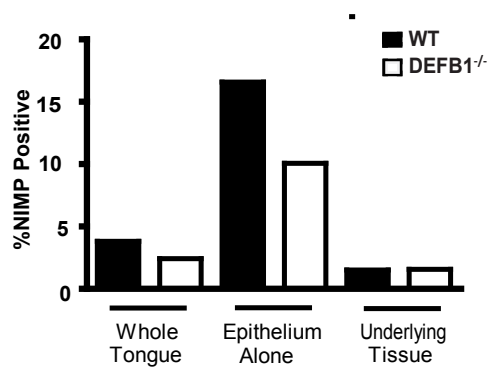
**Table S1.** Reverse transcriptase-polymerase chain reaction (RT-PCR) mouse primers

Target		Sense/anti-sense (5-3 )	Size (bp)
defB2-	Forward	AAGTATTGGATACGAAGCAG	83
	Reverse	TGGCAGAAGGAGGACAAATG	
defB3-	Forward	GCATTGGCAACACTCGTCAGA	85
	Reverse	CGGGATCTTGGTCTTCTCTATT	
defB4-	Forward	GCAGCCTTTACCCAAATTATC	102
	Reverse	ACAATTGCCAATCTGTGCGAA	
defB14-	Forward	GGACGCATTCTACCAAAAA	89
	Reverse	TCTTCCTTTCCAAGGCAGTT	
Camp-	Forward	GTGGGGAGAAGATTGGTGAA	116
	Reverse	GAATCCAGAAACAGCCCAAG	
GAPDH-	Forward	CGTCCCGTAGACAAAATGGT	177
	Reverse	GAATTTGCCGTGAGTGGAGT	
IL-1 $\beta$ -	Forward	CAACCAACAAGTGATATTCTCCATG	152
	Reverse	GATCCACACTCTCCAGCTGCA	
IL-17a-	Forward	AGCTCGACCACCACATGAAT	104
	Reverse	AGCATCTTCTCGACCCTGAA	
IL-17f-	Forward	CAAAACCAGGGCATTCTGT	81
	Reverse	GGGGTCTCGAGTGATGTTGT	
Cxcl1-	Forward	AACGGAGAAAGAAGACAGACTG	102
	Reverse	GACGAGACCAGGAGAAACAG	
IL-18-	Forward	ACAAC TTTGGCCGACTTCAC	128
	Reverse	GGGTTCACTGGCACTTTGAT	
IL-6-	Forward	CCGGAGAGGAGACTTCACAG	166
	Reverse	TTCTGCAAGTGCATCATCGT	
Nlrc4-	Forward	CTGGAAAAGGATGGGAATGA	89
	Reverse	CCAAGGCAGCATCAATGTAG	
Nlrp3-	Forward	TCCACAATTCTGACCCACAA	92
	Reverse	ACCTCACAGAGGGTCACCAC	



**Supplemental Figure S1. Early dissemination of *Candida* observed in absence of mBD1.**

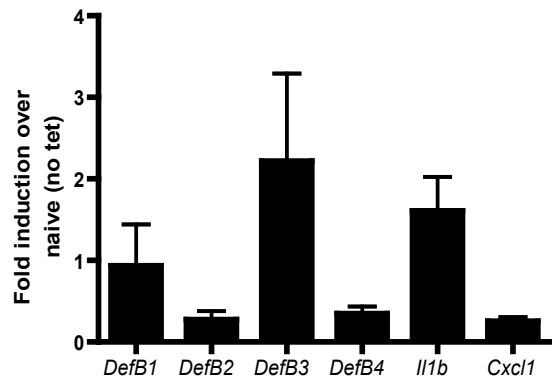
(A) Tongue CFU was determined in WT and *DefB1*<sup>-/-</sup> mice 2 days post oral infection with *Candida albicans*. Fungal burdens were measured in the kidneys of mice (B) 1 day and (C) 2 days of infection.



**Supplemental Figure S2. Decreased neutrophil infiltration into the epithelium of mBD1 deficient hosts.**

Neutrophil infiltration into the tongue was quantified using the MetaMorph Software. Shown are percent ratios of NIMP-positive pixels over total pixels for the whole tongue, epithelium alone, and submucosa alone.

Graph represents images presented in Figure 2.



**Supplemental Figure S3. Tetracycline treatment has minimal impact on innate gene expression.**

mRNA was extracted from intestinal mucosal tissue from either untreated or tetracycline treated mice 3 days post scoring and mock infection with sterile PBS. Values are expressed as fold induction over naïve (non-tet).