

Fig. S4

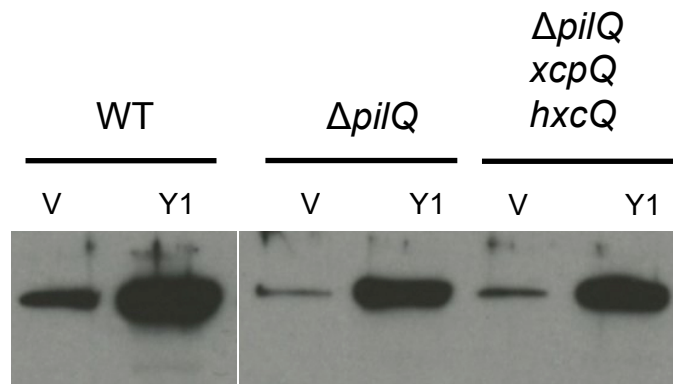


Fig. S4. T2SS is not involved PilY1 secretion. Assessment of PilY1 protein levels in cell surface fraction using Western blotting and anti-PilY1 antibody. Strains (indicated at the top of the panel) carrying either empty vector (V), or PilY1 expression plasmid pPilY1 (Y1) were grown on M8 minimal medium supplemented with 1% agar and 0.2% arabinose. Analysis of the PilY1 levels is described in the Supplementary Materials.