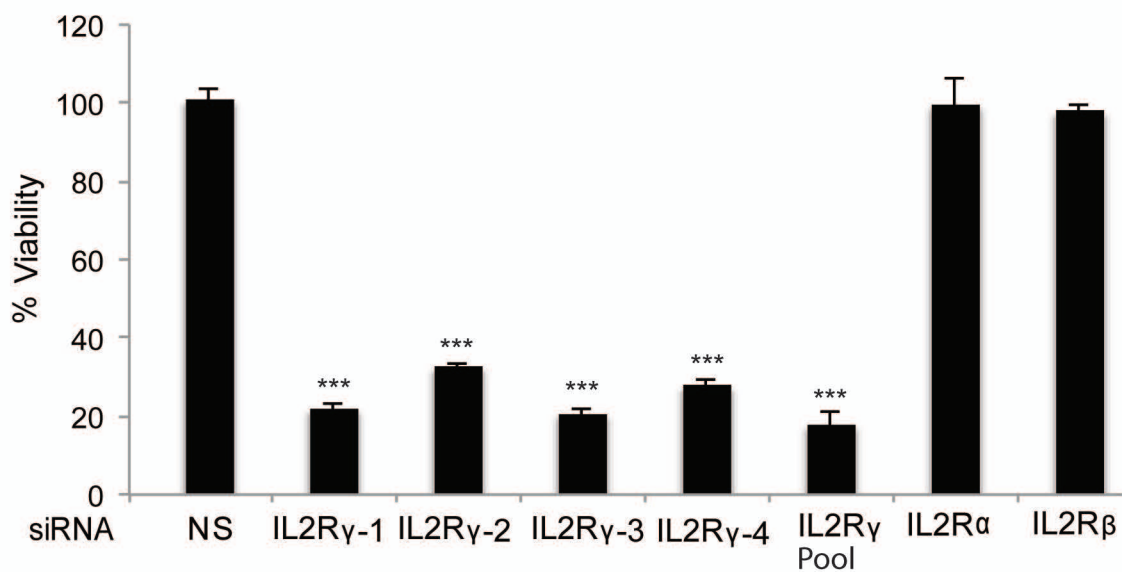
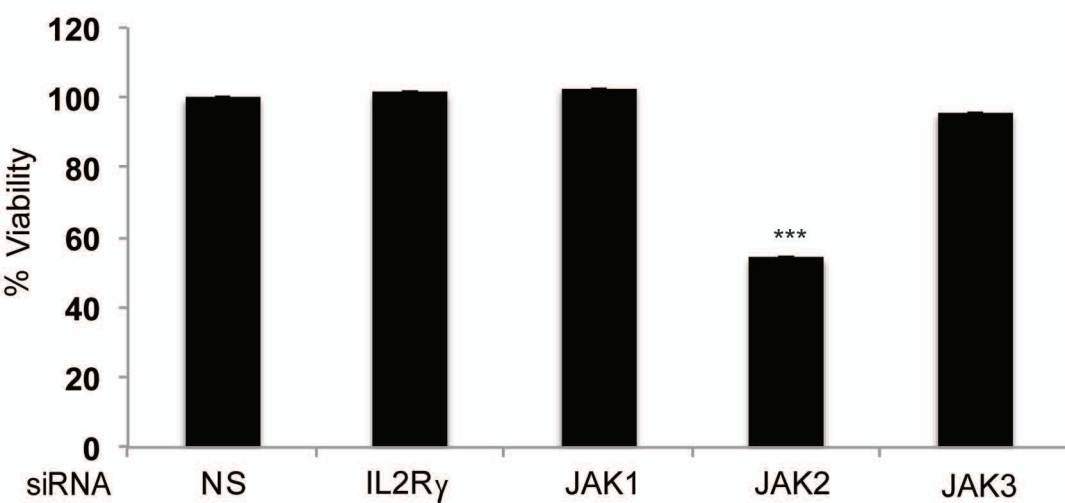


Figure S1

(A)



(B)



(C)

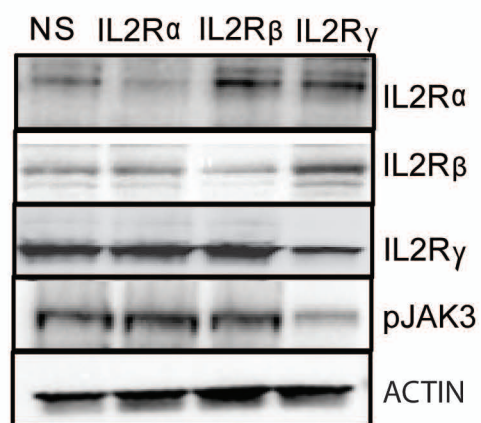
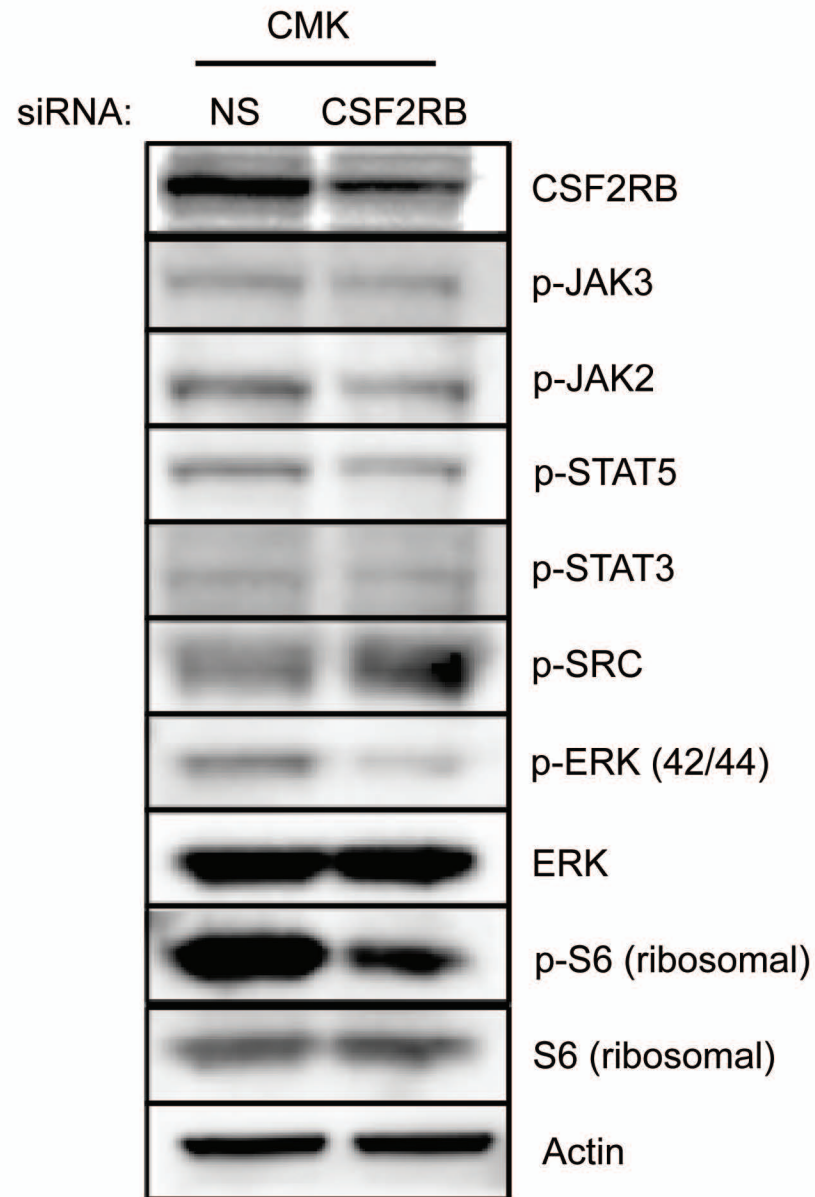


Figure S2



SUPPLEMENTAL FIGURE LEGENDS

Figure S1. The specificity of IL2R γ siRNA and IL2R γ -dependence for mutant JAK3

kinase-positive cells. (A) The specificity of IL2R γ siRNA. The effect of four independent siRNAs and the pool of all 4 siRNAs (utilized in Figures 2 and 4) on cell viability of CMK cells. **(B)** The specificity of IL2R γ -dependence for mutant JAK3 kinase-positive cells. The effect of IL2R γ knockdown on cell viability of the HEL cell line, which harbors a JAK2^{V617F} mutation. **(C)** Silencing of IL2R α and IL2R β do not effect JAK3 phosphorylation. CMK cells were electroporated with indicated siRNA and cells were cultured for 48 hours. Whole cell lysates were subjected to immunoblotting with the indicated antibodies. *** denotes p<0.001

Figure S2. Silencing of CSF2RB does not effect JAK3 phosphorylation. CMK cells were electroporated with CSF2RB siRNA and cells were cultured for 48 hours. Whole cell lysates were subjected to immunoblotting with the indicated antibodies.

Table S1: List of 1,002 genes encoding cytokine and growth factor receptors and associated proteins.

The expression of these genes was analyzed utilizing microarray gene expression data set collected from 141 patient samples for various hematological malignancies. Several genes have multiple probe sets for the expression analysis. Microarray data is submitted to GEO website (<http://www.ncbi.nlm.nih.gov/geo/query/acc.cgi?token=edmdqoourhebtz&acc=GSE51082>) using GEO archive option which includes metadata spreadsheet, matrix table, and raw data (cel) files.

| Gene name | Entrez Gene ID | Probeset Id | Description |
|-----------|----------------|-------------|--|
| A1L4H1 | 284297 | 230228_at | Scavenger receptor cysteine-rich domain-containing protein LOC284297 |
| ACVR1 | 90 | 203935_at | Activin receptor type-1 |
| ACVR1B | 91 | 205209_at | Activin receptor type-1B |
| ACVR1B | 91 | 208218_s_at | Activin receptor type-1B |
| ACVR1B | 91 | 208219_at | Activin receptor type-1B |
| ACVR1B | 91 | 208222_at | Activin receptor type-1B |
| ACVR1B | 91 | 208223_s_at | Activin receptor type-1B |
| ACVR1B | 91 | 213198_at | Activin receptor type-1B |
| ACVR2A | 92 | 205327_s_at | Activin receptor type-2A |
| ACVR2A | 92 | 228416_at | Activin receptor type-2A |
| ACVR2B | 93 | 220028_at | Activin receptor type-2B |
| ACVR2B | 93 | 236126_at | Activin receptor type-2B |
| ACVRL1 | 94 | 210838_s_at | Serine/threonine-protein kinase receptor R3 |
| ACVRL1 | 94 | 226950_at | Serine/threonine-protein kinase receptor R3 |
| ADCYAP1R1 | 117 | 207151_at | Pituitary adenylate cyclase-activating polypeptide type I receptor |
| ADCYAP1R1 | 117 | 226690_at | Pituitary adenylate cyclase-activating polypeptide type I receptor |
| ADIPOR1 | 51094 | 217748_at | Adiponectin receptor protein 1 |
| ADIPOR2 | 79602 | 201346_at | Adiponectin receptor protein 2 |
| ADORA1 | 134 | 205481_at | Adenosine receptor A1 |
| ADORA1 | 134 | 216220_s_at | Adenosine receptor A1 |
| ADORA2B | 136 | 205891_at | Adenosine receptor A2b |
| ADORA3 | 140 | 206171_at | Adenosine receptor A3 |
| ADORA3 | 140 | 223660_at | Adenosine receptor A3 |
| ADRA1A | 148 | 211489_at | Alpha-1A adrenergic receptor |
| ADRA1A | 148 | 211490_at | Alpha-1A adrenergic receptor |
| ADRA1A | 148 | 211491_at | Alpha-1A adrenergic receptor |
| ADRA1A | 148 | 211492_s_at | Alpha-1A adrenergic receptor |
| ADRA1B | 147 | 207589_at | Alpha-1B adrenergic receptor |
| ADRA1D | 146 | 210960_at | Alpha-1D adrenergic receptor |
| ADRA1D | 146 | 210961_s_at | Alpha-1D adrenergic receptor |
| ADRA2A | 150 | 209869_at | Alpha-2A adrenergic receptor |
| ADRA2B | 151 | 208544_at | Alpha-2B adrenergic receptor |
| ADRA2C | 152 | 206128_at | Alpha-2C adrenergic receptor |
| ADRB1 | 153 | 208214_at | Beta-1 adrenergic receptor |
| ADRB1 | 153 | 229277_at | Beta-1 adrenergic receptor |
| ADRB1 | 153 | 229309_at | Beta-1 adrenergic receptor |
| ADRB2 | 154 | 206170_at | Beta-2 adrenergic receptor |
| ADRB3 | 155 | 206812_at | Beta-3 adrenergic receptor |
| ADRB3 | 155 | 217303_s_at | Beta-3 adrenergic receptor |
| ADRBK1 | 156 | 201401_s_at | Beta-adrenergic receptor kinase 1 |

| | | | |
|---------|--------|-------------|---|
| ADRBK1 | 156 | 201402_at | Beta-adrenergic receptor kinase 1 |
| ADRBK1 | 156 | 38447_at | Beta-adrenergic receptor kinase 1 |
| ADRBK2 | 157 | 204183_s_at | Beta-adrenergic receptor kinase 2 |
| ADRBK2 | 157 | 204184_s_at | Beta-adrenergic receptor kinase 2 |
| ADRBK2 | 157 | 228771_at | Beta-adrenergic receptor kinase 2 |
| ADRM1 | 11047 | 201281_at | Proteasomal ubiquitin receptor ADRM1 |
| AGER | 177 | 210081_at | Advanced glycosylation end product-specific receptor |
| AGER | 177 | 217046_s_at | Advanced glycosylation end product-specific receptor |
| AGTR1 | 185 | 205357_s_at | Type-1 angiotensin II receptor |
| AGTR1 | 185 | 208016_s_at | Type-1 angiotensin II receptor |
| AGTR2 | 186 | 207293_s_at | Type-2 angiotensin II receptor |
| AGTR2 | 186 | 207294_at | Type-2 angiotensin II receptor |
| AGTR2 | 186 | 222321_at | Type-2 angiotensin II receptor |
| AGTRAP | 57085 | 225059_at | Type-1 angiotensin II receptor-associated protein |
| AGTRAP | 57085 | 238135_at | Type-1 angiotensin II receptor-associated protein |
| AHR | 196 | 202820_at | Aryl hydrocarbon receptor |
| AHRR | 57491 | 229354_at | Aryl hydrocarbon receptor repressor |
| AIP | 9049 | 201781_s_at | AH receptor-interacting protein |
| AIP | 9049 | 201782_s_at | AH receptor-interacting protein |
| ALK | 238 | 208211_s_at | ALK tyrosine kinase receptor |
| ALK | 238 | 208212_s_at | ALK tyrosine kinase receptor |
| AMFR | 267 | 202203_s_at | "Autocrine motility factor receptor, isoform 1" |
| AMFR | 267 | 202204_s_at | "Autocrine motility factor receptor, isoform 1" |
| AMHR2 | 269 | 206892_at | Anti-Muellerian hormone type-2 receptor |
| ANTXR1 | 84168 | 220092_s_at | Anthrax toxin receptor 1 |
| ANTXR1 | 84168 | 220093_at | Anthrax toxin receptor 1 |
| ANTXR1 | 84168 | 224694_at | Anthrax toxin receptor 1 |
| ANTXR1 | 84168 | 227660_at | Anthrax toxin receptor 1 |
| ANTXR1 | 84168 | 234430_at | Anthrax toxin receptor 1 |
| ANTXR1 | 84168 | 234832_at | Anthrax toxin receptor 1 |
| ANTXR2 | 118429 | 225524_at | Anthrax toxin receptor 2 |
| ANTXR2 | 118429 | 228573_at | Anthrax toxin receptor 2 |
| ANTXR2 | 118429 | 238050_at | Anthrax toxin receptor 2 |
| APLNR | 187 | 213592_at | Apelin receptor |
| APOB48R | 55911 | 220023_at | Apolipoprotein B-100 receptor |
| AR | 367 | 211110_s_at | Androgen receptor |
| AR | 367 | 211621_at | Androgen receptor |
| ARNT | 405 | 210828_s_at | Aryl hydrocarbon receptor nuclear translocator |
| ARNT | 405 | 218221_at | Aryl hydrocarbon receptor nuclear translocator |
| ARNT | 405 | 218222_x_at | Aryl hydrocarbon receptor nuclear translocator |
| ARNT | 405 | 230619_at | Aryl hydrocarbon receptor nuclear translocator |
| ARNT | 405 | 231016_s_at | Aryl hydrocarbon receptor nuclear translocator |
| ARNT | 405 | 233724_at | Aryl hydrocarbon receptor nuclear translocator |
| ARNT2 | 9915 | 202986_at | Aryl hydrocarbon receptor nuclear translocator 2 |
| ARNTL | 406 | 209824_s_at | Aryl hydrocarbon receptor nuclear translocator-like protein 1 |
| ARNTL | 406 | 210971_s_at | Aryl hydrocarbon receptor nuclear translocator-like protein 1 |
| ARNTL2 | 56938 | 220658_s_at | Aryl hydrocarbon receptor nuclear translocator-like protein 2 |
| ARNTL2 | 56938 | 223586_at | Aryl hydrocarbon receptor nuclear translocator-like protein 2 |
| ARNTL2 | 56938 | 224204_x_at | Aryl hydrocarbon receptor nuclear translocator-like protein 2 |

| | | | |
|-----------|--------|-------------|--|
| ASGR1 | 432 | 206743_s_at | Asialoglycoprotein receptor 1 |
| ASGR2 | 433 | 206130_s_at | Asialoglycoprotein receptor 2 |
| ATP6AP2 | 10159 | 201442_s_at | Renin receptor |
| ATP6AP2 | 10159 | 201443_s_at | Renin receptor |
| ATP6AP2 | 10159 | 201444_s_at | Renin receptor |
| AVPR1A | 552 | 206250_x_at | Vasopressin V1a receptor |
| AVPR1A | 552 | 206251_s_at | Vasopressin V1a receptor |
| AVPR1A | 552 | 206252_s_at | Vasopressin V1a receptor |
| AVPR1B | 553 | 208260_at | Vasopressin V1b receptor |
| AVPR2 | 554 | 208108_s_at | Vasopressin V2 receptor |
| AVPR2 | 554 | 208111_at | Vasopressin V2 receptor |
| AX2R | 389289 | 227877_at | Annexin-2 receptor |
| AXL | 558 | 202685_s_at | Tyrosine-protein kinase receptor UFO |
| AXL | 558 | 202686_s_at | Tyrosine-protein kinase receptor UFO |
| BCAP29 | 55973 | 205084_at | B-cell receptor-associated protein 29 |
| BCAP29 | 55973 | 217657_at | B-cell receptor-associated protein 29 |
| BCAP29 | 55973 | 225674_at | B-cell receptor-associated protein 29 |
| BCAP29 | 55973 | 225677_at | B-cell receptor-associated protein 29 |
| BCAP29 | 55973 | 230150_at | B-cell receptor-associated protein 29 |
| BCAP29 | 55973 | 236970_s_at | B-cell receptor-associated protein 29 |
| BCAP29 | 55973 | 241640_at | B-cell receptor-associated protein 29 |
| BCAP29 | 55973 | 241646_s_at | B-cell receptor-associated protein 29 |
| BCAP31 | 10134 | 200837_at | B-cell receptor-associated protein 31 |
| BDKRB1 | 623 | 207510_at | B1 bradykinin receptor |
| BDKRB2 | 624 | 205870_at | B2 bradykinin receptor |
| BMPR1A | 657 | 204832_s_at | Bone morphogenetic protein receptor type-1A |
| BMPR1A | 657 | 213578_at | Bone morphogenetic protein receptor type-1A |
| BMPR1B | 658 | 210523_at | Bone morphogenetic protein receptor type-1B |
| BMPR1B | 658 | 229975_at | Bone morphogenetic protein receptor type-1B |
| BMPR1B | 658 | 242579_at | Bone morphogenetic protein receptor type-1B |
| BMPR2 | 659 | 209920_at | Bone morphogenetic protein receptor type-2 |
| BMPR2 | 659 | 210214_s_at | Bone morphogenetic protein receptor type-2 |
| BMPR2 | 659 | 225144_at | Bone morphogenetic protein receptor type-2 |
| BMPR2 | 659 | 231873_at | Bone morphogenetic protein receptor type-2 |
| BMPR2 | 659 | 238516_at | Bone morphogenetic protein receptor type-2 |
| BRS3 | 680 | 207369_at | Bombesin receptor subtype-3 |
| BZRAP1 | 9256 | 205839_s_at | Peripheral-type benzodiazepine receptor-associated protein 1 |
| C10orf112 | 340895 | 242660_at | MAM and LDL-receptor class A domain-containing protein C10orf112 |
| C10orf54 | 64115 | 225372_at | Platelet receptor Gi24 |
| C10orf54 | 64115 | 225373_at | Platelet receptor Gi24 |
| C3AR1 | 719 | 209906_at | C3a anaphylatoxin chemotactic receptor |
| C5AR1 | 728 | 220088_at | C5a anaphylatoxin chemotactic receptor |
| CALCR | 799 | 207886_s_at | Calcitonin receptor |
| CALCR | 799 | 207887_s_at | Calcitonin receptor |
| CALCRL | 10203 | 206331_at | Calcitonin gene-related peptide type 1 receptor |
| CALCRL | 10203 | 210815_s_at | Calcitonin gene-related peptide type 1 receptor |
| CALCRL | 10203 | 234996_at | Calcitonin gene-related peptide type 1 receptor |
| CASR | 846 | 210577_at | Extracellular calcium-sensing receptor |
| CASR | 846 | 211384_s_at | Extracellular calcium-sensing receptor |

| | | | |
|---------|-----------|-------------|--|
| CASR | 846 | 240886_at | Extracellular calcium-sensing receptor |
| CASR | 846 | 242744_s_at | Extracellular calcium-sensing receptor |
| CASR | 846 | 242745_at | Extracellular calcium-sensing receptor |
| CCKAR | 886 | 211173_at | Cholecystokinin receptor type A |
| CCKAR | 886 | 211174_s_at | Cholecystokinin receptor type A |
| CCKBR | 887 | 210381_s_at | Gastrin/cholecystokinin type B receptor |
| CCKBR | 887 | 234475_x_at | Gastrin/cholecystokinin type B receptor |
| CCR1 | 1230 | 205098_at | C-C chemokine receptor type 1 |
| CCR1 | 1230 | 205099_s_at | C-C chemokine receptor type 1 |
| CCR10 | 2826 | 220565_at | C-C chemokine receptor type 10 |
| CCR2 | 729230 | 206978_at | C-C chemokine receptor type 2 |
| CCR2 | 729230 | 207794_at | C-C chemokine receptor type 2 |
| CCR3 | 1232 | 208304_at | C-C chemokine receptor type 3 |
| CCR4 | 1233 | 208376_at | C-C chemokine receptor type 4 |
| CCR5 | 1234 | 206991_s_at | C-C chemokine receptor type 5 |
| CCR6 | 1235 | 206983_at | C-C chemokine receptor type 6 |
| CCR7 | 1236 | 206337_at | C-C chemokine receptor type 7 |
| CCR8 | 1237 | 208059_at | C-C chemokine receptor type 8 |
| CCR9 | 10803 | 207445_s_at | C-C chemokine receptor type 9 |
| CCRL1 | 51554 | 220351_at | C-C chemokine receptor type 11 |
| CCRL2 | 9034 | 211434_s_at | C-C chemokine receptor-like 2 |
| CD163 | 9332 | 203645_s_at | Scavenger receptor cysteine-rich type 1 protein M130 |
| CD163 | 9332 | 215049_x_at | Scavenger receptor cysteine-rich type 1 protein M130 |
| CD163 | 9332 | 216233_at | Scavenger receptor cysteine-rich type 1 protein M130 |
| CD163L1 | 283316 | 223655_at | Scavenger receptor cysteine-rich type 1 protein M160 |
| CD22 | 933 | 204581_at | B-cell receptor CD22 |
| CD22 | 933 | 217422_s_at | B-cell receptor CD22 |
| CD22 | 933 | 220674_at | B-cell receptor CD22 |
| CD22 | 933 | 38521_at | B-cell receptor CD22 |
| CD226 | 10666 | 207315_at | Cluster of differentiation 226 |
| CD24 | 100133941 | 208650_s_at | Cluster of differentiation 24 |
| CD24 | 100133941 | 208651_x_at | Cluster of differentiation 24 |
| CD24 | 100133941 | 209771_x_at | Cluster of differentiation 24 |
| CD24 | 100133941 | 209772_s_at | Cluster of differentiation 24 |
| CD24 | 100133941 | 216379_x_at | Cluster of differentiation 24 |
| CD24 | 100133941 | 266_s_at | Cluster of differentiation 24 |
| CD244 | 51744 | 220307_at | Natural killer cell receptor 2B4 |
| CD244 | 51744 | 234320_at | Natural killer cell receptor 2B4 |
| CD27 | 939 | 206150_at | Tumor necrosis factor receptor |
| CD40 | 958 | 205153_s_at | Tumor necrosis factor receptor superfamily member 5 |
| CD40 | 958 | 215346_at | Tumor necrosis factor receptor superfamily member 5 |
| CD40 | 958 | 222292_at | Tumor necrosis factor receptor superfamily member 5 |
| CD40 | 958 | 35150_at | Tumor necrosis factor receptor superfamily member 5 |
| CD47 | 961 | 211075_s_at | Cluster of differentiation 47 |
| CD47 | 961 | 213055_at | Cluster of differentiation 47 |
| CD47 | 961 | 213856_at | Cluster of differentiation 47 |
| CD47 | 961 | 213857_s_at | Cluster of differentiation 47 |
| CD47 | 961 | 226016_at | Cluster of differentiation 47 |
| CD47 | 961 | 227259_at | Cluster of differentiation 47 |

| | | | |
|---------|-------|-------------|--|
| CD47 | 961 | 242974_at | Cluster of differentiation 47 |
| CD79A | 973 | 205049_s_at | B-cell antigen receptor complex-associated protein alpha chain |
| CD79B | 974 | 205297_s_at | B-cell antigen receptor complex-associated protein beta chain |
| CD93 | 22918 | 202877_s_at | Complement component C1q receptor |
| CD93 | 22918 | 202878_s_at | Complement component C1q receptor |
| CELSR1 | 9620 | 204539_s_at | Cadherin EGF LAG seven-pass G-type receptor 1 |
| CELSR1 | 9620 | 217262_s_at | Cadherin EGF LAG seven-pass G-type receptor 1 |
| CELSR1 | 9620 | 41660_at | Cadherin EGF LAG seven-pass G-type receptor 1 |
| CELSR2 | 1952 | 204029_at | Cadherin EGF LAG seven-pass G-type receptor 2 |
| CELSR2 | 1952 | 36499_at | Cadherin EGF LAG seven-pass G-type receptor 2 |
| CELSR3 | 1951 | 205165_at | Cadherin EGF LAG seven-pass G-type receptor 3 |
| CELSR3 | 1951 | 40020_at | Cadherin EGF LAG seven-pass G-type receptor 3 |
| CHRM1 | 1128 | 231783_at | Muscarinic acetylcholine receptor M1 |
| CHRM2 | 1129 | 221330_at | Muscarinic acetylcholine receptor M2 |
| CHRM3 | 1131 | 214596_at | Muscarinic acetylcholine receptor M3 |
| CHRM4 | 1132 | 221357_at | Muscarinic acetylcholine receptor M4 |
| CHRM5 | 1133 | 221347_at | Muscarinic acetylcholine receptor M5 |
| CHRNA1 | 1134 | 206633_at | Acetylcholine receptor subunit alpha |
| CHRNA1 | 1134 | 211039_at | Acetylcholine receptor subunit alpha |
| CHRNA10 | 57053 | 220210_at | Neuronal acetylcholine receptor subunit alpha-10 |
| CHRNA10 | 57053 | 239717_at | Neuronal acetylcholine receptor subunit alpha-10 |
| CHRNA2 | 1135 | 207868_at | Neuronal acetylcholine receptor subunit alpha-2 |
| CHRNA3 | 1136 | 210221_at | Neuronal acetylcholine receptor subunit alpha-3 |
| CHRNA3 | 1136 | 211587_x_at | Neuronal acetylcholine receptor subunit alpha-3 |
| CHRNA3 | 1136 | 211772_x_at | Neuronal acetylcholine receptor subunit alpha-3 |
| CHRNA4 | 1137 | 206735_at | Neuronal acetylcholine receptor subunit alpha-4 |
| CHRNA4 | 1137 | 206736_x_at | Neuronal acetylcholine receptor subunit alpha-4 |
| CHRNA4 | 1137 | 216886_at | Neuronal acetylcholine receptor subunit alpha-4 |
| CHRNA4 | 1137 | 216900_s_at | Neuronal acetylcholine receptor subunit alpha-4 |
| CHRNA5 | 1138 | 206533_at | Neuronal acetylcholine receptor subunit alpha-5 |
| CHRNA6 | 8973 | 207568_at | Neuronal acetylcholine receptor subunit alpha-6 |
| CHRNA9 | 55584 | 221107_at | Neuronal acetylcholine receptor subunit alpha-9 |
| CHRNB1 | 1140 | 206703_at | Acetylcholine receptor subunit beta |
| CHRNB2 | 1141 | 206635_at | Neuronal acetylcholine receptor subunit beta-2 |
| CHRNB2 | 1141 | 241389_at | Neuronal acetylcholine receptor subunit beta-2 |
| CHRNB3 | 1142 | 207859_s_at | Neuronal acetylcholine receptor subunit beta-3 |
| CHRNB3 | 1142 | 217086_at | Neuronal acetylcholine receptor subunit beta-3 |
| CHRNB4 | 1143 | 207516_at | Neuronal acetylcholine receptor subunit beta-4 |
| CHRND | 1144 | 207024_at | Acetylcholine receptor subunit delta |
| CHRNE | 1145 | 207274_at | Acetylcholine receptor subunit epsilon |
| CHRNG | 1146 | 221355_at | Acetylcholine receptor subunit gamma |
| CMKLR1 | 1240 | 207652_s_at | Chemokine-like receptor 1 |
| CMKLR1 | 1240 | 210659_at | Chemokine-like receptor 1 |
| CMKLR1 | 1240 | 229121_at | Chemokine-like receptor 1 |
| CNR1 | 1268 | 207940_x_at | Cannabinoid receptor 1 |
| CNR1 | 1268 | 208243_s_at | Cannabinoid receptor 1 |
| CNR1 | 1268 | 213436_at | Cannabinoid receptor 1 |
| CNR2 | 1269 | 206586_at | Cannabinoid receptor 2 |
| CNRIP1 | 25927 | 226751_at | CB1 cannabinoid receptor-interacting protein 1 |

| | | | |
|---------|-------|-------------|---|
| CNTFR | 1271 | 205723_at | Ciliary neurotrophic factor receptor subunit alpha |
| CR1 | 1378 | 206244_at | Complement receptor type 1 |
| CR1 | 1378 | 208488_s_at | Complement receptor type 1 |
| CR1 | 1378 | 217484_at | Complement receptor type 1 |
| CR1 | 1378 | 217552_x_at | Complement receptor type 1 |
| CR1 | 1378 | 244313_at | Complement receptor type 1 |
| CR1L | 1379 | 239206_at | Complement component receptor 1-like protein |
| CR2 | 1380 | 205544_s_at | Complement receptor type 2 |
| CR2 | 1380 | 244097_at | Complement receptor type 2 |
| CRHR1 | 1394 | 208593_x_at | Corticotropin-releasing factor receptor 1 |
| CRHR1 | 1394 | 211897_s_at | Corticotropin-releasing factor receptor 1 |
| CRHR1 | 1394 | 214619_at | Corticotropin-releasing factor receptor 1 |
| CRHR2 | 1395 | 207897_at | Corticotropin-releasing factor receptor 2 |
| CRHR2 | 1395 | 211510_s_at | Corticotropin-releasing factor receptor 2 |
| CRLF1 | 9244 | 206315_at | Cytokine receptor-like factor 1 |
| CRLF2 | 64109 | 208303_s_at | Cytokine receptor-like factor 2 |
| CSF1R | 1436 | 203104_at | Macrophage colony-stimulating factor 1 receptor |
| CSF2RA | 1438 | 207085_x_at | Granulocyte-macrophage colony-stimulating factor receptor subunit alpha |
| CSF2RA | 1438 | 210340_s_at | Granulocyte-macrophage colony-stimulating factor receptor subunit alpha |
| CSF2RA | 1438 | 211286_x_at | Granulocyte-macrophage colony-stimulating factor receptor subunit alpha |
| CSF2RA | 1438 | 211287_x_at | Granulocyte-macrophage colony-stimulating factor receptor subunit alpha |
| CSF2RB | 1439 | 205159_at | Cytokine receptor common subunit beta |
| CSF3R | 1441 | 203591_s_at | Granulocyte colony-stimulating factor receptor |
| CX3CR1 | 1524 | 205898_at | CX3C chemokine receptor 1 |
| CXADR | 1525 | 203917_at | Coxsackievirus and adenovirus receptor |
| CXCR1 | 3577 | 207094_at | C-X-C chemokine receptor type 1 |
| CXCR2 | 3579 | 207008_at | C-X-C chemokine receptor type 2 |
| CXCR3 | 2833 | 207681_at | C-X-C chemokine receptor type 3 |
| CXCR3 | 2833 | 217119_s_at | C-X-C chemokine receptor type 3 |
| CXCR4 | 7852 | 209201_x_at | C-X-C chemokine receptor type 4 |
| CXCR4 | 7852 | 211919_s_at | C-X-C chemokine receptor type 4 |
| CXCR4 | 7852 | 217028_at | C-X-C chemokine receptor type 4 |
| CXCR5 | 643 | 206126_at | C-X-C chemokine receptor type 5 |
| CXCR5 | 643 | 216734_s_at | C-X-C chemokine receptor type 5 |
| CXCR6 | 10663 | 206974_at | C-X-C chemokine receptor type 6 |
| CXCR6 | 10663 | 211469_s_at | C-X-C chemokine receptor type 6 |
| CXCR7 | 57007 | 212977_at | C-X-C chemokine receptor type 7 |
| CXCR7 | 57007 | 232746_at | C-X-C chemokine receptor type 7 |
| CYSLTR1 | 10800 | 216288_at | Cysteinyl leukotriene receptor 1 |
| CYSLTR1 | 10800 | 230866_at | Cysteinyl leukotriene receptor 1 |
| CYSLTR1 | 10800 | 231747_at | Cysteinyl leukotriene receptor 1 |
| CYSLTR2 | 57105 | 220813_at | Cysteinyl leukotriene receptor 2 |
| DARC | 2532 | 208335_s_at | Duffy antigen/chemokine receptor |
| DCC | 1630 | 206939_at | Netrin receptor DCC |
| DCC | 1630 | 238914_at | Netrin receptor DCC |
| DCC | 1630 | 242653_at | Netrin receptor DCC |
| DDR1 | 780 | 1007_s_at | Epithelial discoidin domain-containing receptor 1 |
| DDR1 | 780 | 207169_x_at | Epithelial discoidin domain-containing receptor 1 |
| DDR1 | 780 | 208779_x_at | Epithelial discoidin domain-containing receptor 1 |

| | | | |
|--------|--------|-------------|---|
| DDR1 | 780 | 210749_x_at | Epithelial discoidin domain-containing receptor 1 |
| DDR2 | 4921 | 205168_at | Discoidin domain-containing receptor 2 |
| DDR2 | 4921 | 225442_at | Discoidin domain-containing receptor 2 |
| DDR2 | 4921 | 227561_at | Discoidin domain-containing receptor 2 |
| DDR2 | 4921 | 235631_at | Discoidin domain-containing receptor 2 |
| DNER | 92737 | 226281_at | Delta and Notch-like epidermal growth factor-related receptor |
| DRD1 | 1812 | 214652_at | D(1A) dopamine receptor |
| DRD2 | 1813 | 206590_x_at | D(2) dopamine receptor |
| DRD2 | 1813 | 211624_s_at | D(2) dopamine receptor |
| DRD2 | 1813 | 216924_s_at | D(2) dopamine receptor |
| DRD2 | 1813 | 216938_x_at | D(2) dopamine receptor |
| DRD3 | 1814 | 211625_s_at | D(3) dopamine receptor |
| DRD3 | 1814 | 214559_at | D(3) dopamine receptor |
| DRD4 | 1815 | 208215_x_at | D(4) dopamine receptor |
| DRD5 | 1816 | 208486_at | D(1B) dopamine receptor |
| EBAG9 | 9166 | 204274_at | Receptor-binding cancer antigen expressed on SiSo cells |
| EBAG9 | 9166 | 204278_s_at | Receptor-binding cancer antigen expressed on SiSo cells |
| EDA2R | 60401 | 221399_at | Tumor necrosis factor receptor superfamily member 27 |
| EDAR | 10913 | 220048_at | Tumor necrosis factor receptor superfamily member EDAR |
| EDNRA | 1909 | 204463_s_at | Endothelin-1 receptor |
| EDNRA | 1909 | 204464_s_at | Endothelin-1 receptor |
| EDNRA | 1909 | 216235_s_at | Endothelin-1 receptor |
| EDNRB | 1910 | 204271_s_at | Endothelin B receptor |
| EDNRB | 1910 | 204273_at | Endothelin B receptor |
| EDNRB | 1910 | 206701_x_at | Endothelin B receptor |
| EGFR | 1956 | 201983_s_at | Epidermal growth factor receptor |
| EGFR | 1956 | 201984_s_at | Epidermal growth factor receptor |
| EGFR | 1956 | 210984_x_at | Epidermal growth factor receptor |
| EGFR | 1956 | 211550_at | Epidermal growth factor receptor |
| EGFR | 1956 | 211551_at | Epidermal growth factor receptor |
| EGFR | 1956 | 211607_x_at | Epidermal growth factor receptor |
| EMR1 | 2015 | 207111_at | EGF-like module-containing mucin-like hormone receptor-like 1 |
| EMR2 | 30817 | 207610_s_at | EGF-like module-containing mucin-like hormone receptor-like 2 |
| EMR2 | 30817 | 232009_at | EGF-like module-containing mucin-like hormone receptor-like 2 |
| EMR3 | 84658 | 210724_at | EGF-like module-containing mucin-like hormone receptor-like 3 |
| EPHA1 | 2041 | 205977_s_at | Ephrin type-A receptor 1 |
| EPHA1 | 2041 | 215804_at | Ephrin type-A receptor 1 |
| EPHA10 | 284656 | 236073_at | Ephrin type-A receptor 10 |
| EPHA10 | 284656 | 243717_at | Ephrin type-A receptor 10 |
| EPHA2 | 1969 | 203499_at | Ephrin type-A receptor 2 |
| EPHA3 | 2042 | 206070_s_at | Ephrin type-A receptor 3 |
| EPHA3 | 2042 | 206071_s_at | Ephrin type-A receptor 3 |
| EPHA3 | 2042 | 211164_at | Ephrin type-A receptor 3 |
| EPHA4 | 2043 | 206114_at | Ephrin type-A receptor 4 |
| EPHA4 | 2043 | 227449_at | Ephrin type-A receptor 4 |
| EPHA4 | 2043 | 228948_at | Ephrin type-A receptor 4 |
| EPHA4 | 2043 | 229374_at | Ephrin type-A receptor 4 |
| EPHA5 | 2044 | 215664_s_at | Ephrin type-A receptor 5 |
| EPHA5 | 2044 | 216837_at | Ephrin type-A receptor 5 |

| | | | |
|---------|--------|-------------|---|
| EPHA5 | 2044 | 237939_at | Ephrin type-A receptor 5 |
| EPHA6 | 285220 | 233184_at | Ephrin type-A receptor 6 |
| EPHA7 | 2045 | 206852_at | Ephrin type-A receptor 7 |
| EPHA7 | 2045 | 229288_at | Ephrin type-A receptor 7 |
| EPHA7 | 2045 | 238533_at | Ephrin type-A receptor 7 |
| EPHA8 | 2046 | 231796_at | Ephrin type-A receptor 8 |
| EPHB1 | 2047 | 210753_s_at | Ephrin type-B receptor 1 |
| EPHB1 | 2047 | 211898_s_at | Ephrin type-B receptor 1 |
| EPHB1 | 2047 | 230425_at | Ephrin type-B receptor 1 |
| EPHB2 | 2048 | 209588_at | Ephrin type-B receptor 2 |
| EPHB2 | 2048 | 209589_s_at | Ephrin type-B receptor 2 |
| EPHB2 | 2048 | 210651_s_at | Ephrin type-B receptor 2 |
| EPHB2 | 2048 | 211165_x_at | Ephrin type-B receptor 2 |
| EPHB3 | 2049 | 1438_at | Ephrin type-B receptor 3 |
| EPHB3 | 2049 | 204600_at | Ephrin type-B receptor 3 |
| EPHB4 | 2050 | 202894_at | Ephrin type-B receptor 4 |
| EPHB4 | 2050 | 216680_s_at | Ephrin type-B receptor 4 |
| EPHB6 | 2051 | 204718_at | Ephrin type-B receptor 6 |
| EPOR | 2057 | 209962_at | Erythropoietin receptor |
| EPOR | 2057 | 209963_s_at | Erythropoietin receptor |
| EPOR | 2057 | 215054_at | Erythropoietin receptor |
| EPOR | 2057 | 216999_at | Erythropoietin receptor |
| EPOR | 2057 | 37986_at | Erythropoietin receptor |
| EPOR | 2057 | 396_f_at | Erythropoietin receptor |
| EPS15 | 2060 | 217886_at | Epidermal growth factor receptor substrate 15 |
| EPS15 | 2060 | 217887_s_at | Epidermal growth factor receptor substrate 15 |
| EPS15L1 | 58513 | 221056_x_at | Epidermal growth factor receptor substrate 15-like 1 |
| EPS15L1 | 58513 | 222112_at | Epidermal growth factor receptor substrate 15-like 1 |
| EPS15L1 | 58513 | 222113_s_at | Epidermal growth factor receptor substrate 15-like 1 |
| EPS15L1 | 58513 | 231926_at | Epidermal growth factor receptor substrate 15-like 1 |
| EPS15L1 | 58513 | 232438_at | Epidermal growth factor receptor substrate 15-like 1 |
| EPS15L2 | 55380 | 207750_at | Putative epidermal growth factor receptor pathway substrate 15-like protein 2 |
| EPS8 | 2059 | 202609_at | Epidermal growth factor receptor kinase substrate 8 |
| EPS8L1 | 54869 | 218778_x_at | Epidermal growth factor receptor kinase substrate 8-like protein 1 |
| EPS8L1 | 54869 | 218779_x_at | Epidermal growth factor receptor kinase substrate 8-like protein 1 |
| EPS8L1 | 54869 | 221655_x_at | Epidermal growth factor receptor kinase substrate 8-like protein 1 |
| EPS8L1 | 54869 | 91826_at | Epidermal growth factor receptor kinase substrate 8-like protein 1 |
| EPS8L2 | 64787 | 218180_s_at | Epidermal growth factor receptor kinase substrate 8-like protein 2 |
| EPS8L2 | 64787 | 222546_s_at | Epidermal growth factor receptor kinase substrate 8-like protein 2 |
| EPS8L2 | 64787 | 229020_x_at | Epidermal growth factor receptor kinase substrate 8-like protein 2 |
| EPS8L3 | 79574 | 219404_at | Epidermal growth factor receptor kinase substrate 8-like protein 3 |
| ERBB2 | 2064 | 210930_s_at | Receptor tyrosine-protein kinase erbB-2 |
| ERBB2 | 2064 | 216836_s_at | Receptor tyrosine-protein kinase erbB-2 |
| ERBB2 | 2064 | 234354_x_at | Receptor tyrosine-protein kinase erbB-2 |
| ERBB3 | 2065 | 202454_s_at | Receptor tyrosine-protein kinase erbB-3 |
| ERBB3 | 2065 | 215638_at | Receptor tyrosine-protein kinase erbB-3 |
| ERBB3 | 2065 | 226213_at | Receptor tyrosine-protein kinase erbB-3 |
| ERBB4 | 2066 | 206794_at | Receptor tyrosine-protein kinase erbB-4 |
| ERBB4 | 2066 | 214053_at | Receptor tyrosine-protein kinase erbB-4 |

| | | | |
|---------|-------|-------------|--|
| ERBB4 | 2066 | 233494_at | Receptor tyrosine-protein kinase erbB-4 |
| ERBB4 | 2066 | 233498_at | Receptor tyrosine-protein kinase erbB-4 |
| ERRFI1 | 54206 | 224657_at | ERBB receptor feedback inhibitor 1 |
| ESR1 | 2099 | 205225_at | Estrogen receptor |
| ESR1 | 2099 | 211233_x_at | Estrogen receptor |
| ESR1 | 2099 | 211234_x_at | Estrogen receptor |
| ESR1 | 2099 | 211235_s_at | Estrogen receptor |
| ESR1 | 2099 | 211627_x_at | Estrogen receptor |
| ESR1 | 2099 | 215551_at | Estrogen receptor |
| ESR1 | 2099 | 215552_s_at | Estrogen receptor |
| ESR1 | 2099 | 217163_at | Estrogen receptor |
| ESR1 | 2099 | 217190_x_at | Estrogen receptor |
| ESR2 | 2100 | 210780_at | Estrogen receptor beta |
| ESR2 | 2100 | 211117_x_at | Estrogen receptor beta |
| ESR2 | 2100 | 211118_x_at | Estrogen receptor beta |
| ESR2 | 2100 | 211119_at | Estrogen receptor beta |
| ESR2 | 2100 | 211120_x_at | Estrogen receptor beta |
| ESRRA | 2101 | 1487_at | Steroid hormone receptor ERR1 |
| ESRRA | 2101 | 203193_at | Steroid hormone receptor ERR1 |
| ESRRB | 2103 | 207726_at | Steroid hormone receptor ERR2 |
| ESRRB | 2103 | 223858_at | Steroid hormone receptor ERR2 |
| ESRRG | 2104 | 207981_s_at | Estrogen-related receptor gamma |
| ESRRG | 2104 | 209966_x_at | Estrogen-related receptor gamma |
| F2R | 2149 | 203989_x_at | Proteinase-activated receptor 1 |
| F2RL1 | 2150 | 206429_at | Proteinase-activated receptor 2 |
| F2RL1 | 2150 | 213506_at | Proteinase-activated receptor 2 |
| F2RL2 | 2151 | 206795_at | Proteinase-activated receptor 3 |
| F2RL2 | 2151 | 230147_at | Proteinase-activated receptor 3 |
| F2RL3 | 9002 | 207221_at | Proteinase-activated receptor 4 |
| FAM120B | 84498 | 226774_at | Constitutive coactivator of peroxisome proliferator-activated receptor gamma |
| FAM120B | 84498 | 227895_at | Constitutive coactivator of peroxisome proliferator-activated receptor gamma |
| FAS | 355 | 204780_s_at | Tumor necrosis factor receptor superfamily member 6 |
| FAS | 355 | 204781_s_at | Tumor necrosis factor receptor superfamily member 6 |
| FAS | 355 | 215719_x_at | Tumor necrosis factor receptor superfamily member 6 |
| FAS | 355 | 216252_x_at | Tumor necrosis factor receptor superfamily member 6 |
| FAS | 355 | 237522_at | Tumor necrosis factor receptor superfamily member 6 |
| FCAMR | 83953 | 231496_at | High affinity immunoglobulin alpha and immunoglobulin mu Fc receptor |
| FCAR | 2204 | 207674_at | Immunoglobulin alpha Fc receptor |
| FCAR | 2204 | 211305_x_at | Immunoglobulin alpha Fc receptor |
| FCAR | 2204 | 211306_s_at | Immunoglobulin alpha Fc receptor |
| FCAR | 2204 | 211307_s_at | Immunoglobulin alpha Fc receptor |
| FCAR | 2204 | 211816_x_at | Immunoglobulin alpha Fc receptor |
| FCER1A | 2205 | 211734_s_at | High affinity immunoglobulin epsilon receptor subunit alpha |
| FCER1G | 2207 | 204232_at | High affinity immunoglobulin epsilon receptor subunit gamma |
| FCER2 | 2208 | 206759_at | Low affinity immunoglobulin epsilon Fc receptor |
| FCER2 | 2208 | 206760_s_at | Low affinity immunoglobulin epsilon Fc receptor |
| FCGR1A | 2209 | 216951_at | High affinity immunoglobulin gamma Fc receptor I |
| FCGR1B | 2210 | 214511_x_at | High affinity immunoglobulin gamma Fc receptor IB |
| FCGR2A | 2212 | 203561_at | Low affinity immunoglobulin gamma Fc region receptor II-a |

| | | | |
|--------|--------|-------------|--|
| FCGR2B | 2213 | 210889_s_at | Low affinity immunoglobulin gamma Fc region receptor II-b |
| FCGR2C | 9103 | 210992_x_at | Low affinity immunoglobulin gamma Fc region receptor II-c |
| FCGR2C | 9103 | 211395_x_at | Low affinity immunoglobulin gamma Fc region receptor II-c |
| FCGR2C | 9103 | 211396_at | Low affinity immunoglobulin gamma Fc region receptor II-c |
| FCGR3B | 2215 | 204007_at | Low affinity immunoglobulin gamma Fc region receptor III-B |
| FCGRT | 2217 | 218831_s_at | IgG receptor FcRn large subunit p51 |
| FCRL1 | 115350 | 235982_at | Fc receptor-like protein 1 |
| FCRL1 | 115350 | 243968_x_at | Fc receptor-like protein 1 |
| FCRL2 | 79368 | 221239_s_at | Fc receptor-like protein 2 |
| FCRL2 | 79368 | 224192_at | Fc receptor-like protein 2 |
| FCRL2 | 79368 | 224193_s_at | Fc receptor-like protein 2 |
| FCRL2 | 79368 | 224194_at | Fc receptor-like protein 2 |
| FCRL3 | 115352 | 231093_at | Fc receptor-like protein 3 |
| FCRL4 | 83417 | 224401_s_at | Fc receptor-like protein 4 |
| FCRL4 | 83417 | 224402_s_at | Fc receptor-like protein 4 |
| FCRL4 | 83417 | 224403_at | Fc receptor-like protein 4 |
| FCRL5 | 83416 | 224404_s_at | Fc receptor-like protein 5 |
| FCRL5 | 83416 | 224405_at | Fc receptor-like protein 5 |
| FCRL5 | 83416 | 224406_s_at | Fc receptor-like protein 5 |
| FCRL5 | 83416 | 231647_s_at | Fc receptor-like protein 5 |
| FCRLA | 84824 | 235372_at | Fc receptor-like A |
| FCRLA | 84824 | 235400_at | Fc receptor-like A |
| FCRLA | 84824 | 235401_s_at | Fc receptor-like A |
| FCRLB | 127943 | 238452_at | Fc receptor-like B |
| FFAR1 | 2864 | 231761_at | Free fatty acid receptor 1 |
| FFAR2 | 2867 | 221345_at | Free fatty acid receptor 2 |
| FFAR3 | 2865 | 221385_s_at | Free fatty acid receptor 3 |
| FGFR1 | 2260 | 207822_at | Basic fibroblast growth factor receptor 1 |
| FGFR1 | 2260 | 207937_x_at | Basic fibroblast growth factor receptor 1 |
| FGFR1 | 2260 | 210973_s_at | Basic fibroblast growth factor receptor 1 |
| FGFR1 | 2260 | 211535_s_at | Basic fibroblast growth factor receptor 1 |
| FGFR1 | 2260 | 215404_x_at | Basic fibroblast growth factor receptor 1 |
| FGFR1 | 2260 | 222164_at | Basic fibroblast growth factor receptor 1 |
| FGFR1 | 2260 | 226705_at | Basic fibroblast growth factor receptor 1 |
| FGFR2 | 2263 | 203638_s_at | Fibroblast growth factor receptor 2 |
| FGFR2 | 2263 | 203639_s_at | Fibroblast growth factor receptor 2 |
| FGFR2 | 2263 | 208225_at | Fibroblast growth factor receptor 2 |
| FGFR2 | 2263 | 208228_s_at | Fibroblast growth factor receptor 2 |
| FGFR2 | 2263 | 208229_at | Fibroblast growth factor receptor 2 |
| FGFR2 | 2263 | 208234_x_at | Fibroblast growth factor receptor 2 |
| FGFR2 | 2263 | 211398_at | Fibroblast growth factor receptor 2 |
| FGFR2 | 2263 | 211399_at | Fibroblast growth factor receptor 2 |
| FGFR2 | 2263 | 211400_at | Fibroblast growth factor receptor 2 |
| FGFR2 | 2263 | 211401_s_at | Fibroblast growth factor receptor 2 |
| FGFR2 | 2263 | 230842_at | Fibroblast growth factor receptor 2 |
| FGFR2 | 2263 | 240913_at | Fibroblast growth factor receptor 2 |
| FGFR3 | 2261 | 204379_s_at | Fibroblast growth factor receptor 3 |
| FGFR3 | 2261 | 204380_s_at | Fibroblast growth factor receptor 3 |
| FGFR4 | 2264 | 204579_at | Fibroblast growth factor receptor 4 |

| | | | |
|-----------|-------|-------------|---|
| FGFR4 | 2264 | 211237_s_at | Fibroblast growth factor receptor 4 |
| FGFRL1 | 53834 | 223321_s_at | Fibroblast growth factor receptor-like 1 |
| FGFRL1 | 53834 | 223648_s_at | Fibroblast growth factor receptor-like 1 |
| FLT1 | 2321 | 204406_at | Vascular endothelial growth factor receptor 1 |
| FLT1 | 2321 | 210287_s_at | Vascular endothelial growth factor receptor 1 |
| FLT1 | 2321 | 222033_s_at | Vascular endothelial growth factor receptor 1 |
| FLT1 | 2321 | 226497_s_at | Vascular endothelial growth factor receptor 1 |
| FLT1 | 2321 | 226498_at | Vascular endothelial growth factor receptor 1 |
| FLT1 | 2321 | 232809_s_at | Vascular endothelial growth factor receptor 1 |
| FLT3 | 2322 | 206674_at | FL cytokine receptor |
| FLT4 | 2324 | 210316_at | Vascular endothelial growth factor receptor 3 |
| FLT4 | 2324 | 229902_at | Vascular endothelial growth factor receptor 3 |
| FLT4 | 2324 | 234379_at | Vascular endothelial growth factor receptor 3 |
| FLVCR1 | 28982 | 222906_at | Feline leukemia virus subgroup C receptor-related protein 1 |
| FLVCR2 | 55640 | 219316_s_at | Feline leukemia virus subgroup C receptor-related protein 2 |
| FLVCR2 | 55640 | 222866_s_at | Feline leukemia virus subgroup C receptor-related protein 2 |
| FOLR1 | 2348 | 204437_s_at | Folate receptor alpha |
| FOLR1 | 2348 | 211074_at | Folate receptor alpha |
| FOLR2 | 2350 | 204829_s_at | Folate receptor beta |
| FOLR2 | 2350 | 229619_at | Folate receptor beta |
| FOLR3 | 2352 | 206371_at | Folate receptor gamma |
| FPR1 | 2357 | 205118_at | fMet-Leu-Phe receptor |
| FPR1 | 2357 | 205119_s_at | fMet-Leu-Phe receptor |
| FPR2 | 2358 | 210772_at | N-formyl peptide receptor 2 |
| FPR2 | 2358 | 210773_s_at | N-formyl peptide receptor 2 |
| FPR3 | 2359 | 214560_at | N-formyl peptide receptor 3 |
| FPR3 | 2359 | 230422_at | N-formyl peptide receptor 3 |
| FRS2 | 10818 | 221308_at | Fibroblast growth factor receptor substrate 2 |
| FRS2 | 10818 | 226045_at | Fibroblast growth factor receptor substrate 2 |
| FRS2 | 10818 | 238486_at | Fibroblast growth factor receptor substrate 2 |
| FRS3 | 10817 | 219907_at | Fibroblast growth factor receptor substrate 3 |
| FSHR | 2492 | 211201_at | Follicle-stimulating hormone receptor |
| GABARAP | 11337 | 200645_at | Gamma-aminobutyric acid receptor-associated protein |
| GABARAPL1 | 23710 | 208868_s_at | Gamma-aminobutyric acid receptor-associated protein-like 1 |
| GABARAPL1 | 23710 | 208869_s_at | Gamma-aminobutyric acid receptor-associated protein-like 1 |
| GABARAPL2 | 11345 | 209046_s_at | Gamma-aminobutyric acid receptor-associated protein-like 2 |
| GABARAPL3 | 23766 | 211457_at | Gamma-aminobutyric acid receptor-associated protein-like 3 |
| GABBR1 | 2550 | 203146_s_at | Gamma-aminobutyric acid type B receptor subunit 1 |
| GABBR1 | 2550 | 238569_at | Gamma-aminobutyric acid type B receptor subunit 1 |
| GABBR2 | 9568 | 209990_s_at | Gamma-aminobutyric acid type B receptor subunit 2 |
| GABBR2 | 9568 | 209991_x_at | Gamma-aminobutyric acid type B receptor subunit 2 |
| GABBR2 | 9568 | 211679_x_at | Gamma-aminobutyric acid type B receptor subunit 2 |
| GABBR2 | 9568 | 217077_s_at | Gamma-aminobutyric acid type B receptor subunit 2 |
| GABRA1 | 2554 | 206678_at | Gamma-aminobutyric acid receptor subunit alpha-1 |
| GABRA1 | 2554 | 244118_at | Gamma-aminobutyric acid receptor subunit alpha-1 |
| GABRA2 | 2555 | 207014_at | Gamma-aminobutyric acid receptor subunit alpha-2 |
| GABRA3 | 2556 | 207210_at | Gamma-aminobutyric acid receptor subunit alpha-3 |
| GABRA4 | 2557 | 208463_at | Gamma-aminobutyric acid receptor subunit alpha-4 |
| GABRA4 | 2557 | 233437_at | Gamma-aminobutyric acid receptor subunit alpha-4 |

| | | | |
|--------|--------|-------------|--|
| GABRA5 | 2558 | 206456_at | Gamma-aminobutyric acid receptor subunit alpha-5 |
| GABRA5 | 2558 | 215531_s_at | Gamma-aminobutyric acid receptor subunit alpha-5 |
| GABRA5 | 2558 | 217280_x_at | Gamma-aminobutyric acid receptor subunit alpha-5 |
| GABRA6 | 2559 | 207182_at | Gamma-aminobutyric acid receptor subunit alpha-6 |
| GABRB1 | 2560 | 207010_at | Gamma-aminobutyric acid receptor subunit beta-1 |
| GABRB2 | 2561 | 207352_s_at | Gamma-aminobutyric acid receptor subunit beta-2 |
| GABRB2 | 2561 | 242344_at | Gamma-aminobutyric acid receptor subunit beta-2 |
| GABRB3 | 2562 | 205850_s_at | Gamma-aminobutyric acid receptor subunit beta-3 |
| GABRB3 | 2562 | 227690_at | Gamma-aminobutyric acid receptor subunit beta-3 |
| GABRB3 | 2562 | 227830_at | Gamma-aminobutyric acid receptor subunit beta-3 |
| GABRB3 | 2562 | 229724_at | Gamma-aminobutyric acid receptor subunit beta-3 |
| GABRD | 2563 | 208457_at | Gamma-aminobutyric acid receptor subunit delta |
| GABRD | 2563 | 230255_at | Gamma-aminobutyric acid receptor subunit delta |
| GABRE | 2564 | 204537_s_at | Gamma-aminobutyric acid receptor subunit epsilon |
| GABRG1 | 2565 | 241805_at | Gamma-aminobutyric acid receptor subunit gamma-1 |
| GABRG2 | 2566 | 206849_at | Gamma-aminobutyric acid receptor subunit gamma-2 |
| GABRG3 | 2567 | 216895_at | Gamma-aminobutyric acid receptor subunit gamma-3 |
| GABRP | 2568 | 205044_at | Gamma-aminobutyric acid receptor subunit pi |
| GABRQ | 55879 | 220886_at | Gamma-aminobutyric acid receptor subunit theta |
| GABRQ | 55879 | 238123_at | Gamma-aminobutyric acid receptor subunit theta |
| GABRR1 | 2569 | 206525_at | Gamma-aminobutyric acid receptor subunit rho-1 |
| GABRR2 | 2570 | 208217_at | Gamma-aminobutyric acid receptor subunit rho-2 |
| GABRR3 | 200959 | 234410_at | Gamma-aminobutyric acid receptor subunit rho-3 |
| GALR1 | 2587 | 220821_at | Galanin receptor type 1 |
| GALR2 | 8811 | 211226_at | Galanin receptor type 2 |
| GALR3 | 8484 | 33579_i_at | Galanin receptor type 3 |
| GCGR | 2642 | 210565_at | Glucagon receptor |
| GFRA1 | 2674 | 205696_s_at | GDNF family receptor alpha-1 |
| GFRA1 | 2674 | 227550_at | GDNF family receptor alpha-1 |
| GFRA1 | 2674 | 230163_at | GDNF family receptor alpha-1 |
| GFRA2 | 2675 | 205721_at | GDNF family receptor alpha-2 |
| GFRA2 | 2675 | 205722_s_at | GDNF family receptor alpha-2 |
| GFRA3 | 2676 | 214479_at | GDNF family receptor alpha-3 |
| GFRA3 | 2676 | 229936_at | GDNF family receptor alpha-3 |
| GFRA4 | 64096 | 221199_at | GDNF family receptor alpha-4 |
| GFRA4 | 64096 | 234868_s_at | GDNF family receptor alpha-4 |
| GHR | 2690 | 205498_at | Growth hormone receptor |
| GHRHR | 2692 | 207825_s_at | Growth hormone-releasing hormone receptor |
| GHRHR | 2692 | 211544_s_at | Growth hormone-releasing hormone receptor |
| GHRHR | 2692 | 211545_at | Growth hormone-releasing hormone receptor |
| GHSR | 2693 | 221360_s_at | Growth hormone secretagogue receptor type 1 |
| GHSR | 2693 | 224554_at | Growth hormone secretagogue receptor type 1 |
| GIPR | 2696 | 208105_at | Gastric inhibitory polypeptide receptor |
| GLP1R | 2740 | 208390_s_at | Glucagon-like peptide 1 receptor |
| GLP1R | 2740 | 208391_s_at | Glucagon-like peptide 1 receptor |
| GLP1R | 2740 | 208400_at | Glucagon-like peptide 1 receptor |
| GLP1R | 2740 | 208401_s_at | Glucagon-like peptide 1 receptor |
| GLP1R | 2740 | 211232_x_at | Glucagon-like peptide 1 receptor |
| GLP2R | 9340 | 221312_at | Glucagon-like peptide 2 receptor |

| | | | |
|---------|--------|-------------|---|
| GLRA1 | 2741 | 207972_at | Glycine receptor subunit alpha-1 |
| GLRA2 | 2742 | 207462_at | Glycine receptor subunit alpha-2 |
| GLRA3 | 8001 | 207928_s_at | Glycine receptor subunit alpha-3 |
| GLRA3 | 8001 | 210661_at | Glycine receptor subunit alpha-3 |
| GLRA3 | 8001 | 216021_s_at | Glycine receptor subunit alpha-3 |
| GLRB | 2743 | 205279_s_at | Glycine receptor subunit beta |
| GLRB | 2743 | 205280_at | Glycine receptor subunit beta |
| GLRB | 2743 | 244680_at | Glycine receptor subunit beta |
| GNRHR | 2798 | 211522_s_at | Gonadotropin-releasing hormone receptor |
| GNRHR | 2798 | 211523_at | Gonadotropin-releasing hormone receptor |
| GNRHR | 2798 | 216341_s_at | Gonadotropin-releasing hormone receptor |
| GOSR1 | 9527 | 204630_s_at | Golgi SNAP receptor complex member 1 |
| GOSR1 | 9527 | 213020_at | Golgi SNAP receptor complex member 1 |
| GOSR1 | 9527 | 213021_at | Golgi SNAP receptor complex member 1 |
| GOSR2 | 9570 | 210009_s_at | Golgi SNAP receptor complex member 2 |
| GOSR2 | 9570 | 213144_at | Golgi SNAP receptor complex member 2 |
| GOSR2 | 9570 | 213180_s_at | Golgi SNAP receptor complex member 2 |
| GOSR2 | 9570 | 213206_at | Golgi SNAP receptor complex member 2 |
| GOSR2 | 9570 | 213207_s_at | Golgi SNAP receptor complex member 2 |
| GOSR2 | 9570 | 235041_at | Golgi SNAP receptor complex member 2 |
| GOSR2 | 9570 | 239159_at | Golgi SNAP receptor complex member 2 |
| GOSR2 | 9570 | 243880_at | Golgi SNAP receptor complex member 2 |
| GPER | 2852 | 210640_s_at | G-protein coupled estrogen receptor 1 |
| GPER | 2852 | 211829_s_at | G-protein coupled estrogen receptor 1 |
| GPR1 | 2825 | 214605_x_at | Probable G-protein coupled receptor 1 |
| GPR109B | 8843 | 205220_at | G-protein coupled receptor 109B |
| GPR110 | 266977 | 220907_at | Probable G-protein coupled receptor 110 |
| GPR110 | 266977 | 235988_at | Probable G-protein coupled receptor 110 |
| GPR110 | 266977 | 238689_at | Probable G-protein coupled receptor 110 |
| GPR113 | 165082 | 236608_at | Probable G-protein coupled receptor 113 |
| GPR114 | 221188 | 229971_at | Probable G-protein coupled receptor 114 |
| GPR115 | 221393 | 237690_at | Probable G-protein coupled receptor 115 |
| GPR116 | 221395 | 212950_at | Probable G-protein coupled receptor 116 |
| GPR116 | 221395 | 212951_at | Probable G-protein coupled receptor 116 |
| GPR12 | 2835 | 214558_at | G-protein coupled receptor 12 |
| GPR123 | 84435 | 239221_at | Probable G-protein coupled receptor 123 |
| GPR124 | 25960 | 221814_at | Probable G-protein coupled receptor 124 |
| GPR124 | 25960 | 65718_at | Probable G-protein coupled receptor 124 |
| GPR125 | 166647 | 210473_s_at | Probable G-protein coupled receptor 125 |
| GPR126 | 57211 | 213094_at | G-protein coupled receptor 126 |
| GPR126 | 57211 | 233887_at | G-protein coupled receptor 126 |
| GPR132 | 29933 | 221140_s_at | Probable G-protein coupled receptor 132 |
| GPR132 | 29933 | 223887_at | Probable G-protein coupled receptor 132 |
| GPR133 | 283383 | 232267_at | Probable G-protein coupled receptor 133 |
| GPR135 | 64582 | 211659_at | Probable G-protein coupled receptor 135 |
| GPR135 | 64582 | 214503_x_at | Probable G-protein coupled receptor 135 |
| GPR135 | 64582 | 217641_at | Probable G-protein coupled receptor 135 |
| GPR143 | 4935 | 206696_at | G-protein coupled receptor 143 |
| GPR144 | 347088 | 216289_at | Probable G-protein coupled receptor 144 |

| | | | |
|---------|--------|-------------|--|
| GPR146 | 115330 | 228770_at | Probable G-protein coupled receptor 146 |
| GPR15 | 2838 | 208524_at | G-protein coupled receptor 15 |
| GPR150 | 285601 | 231349_at | Probable G-protein coupled receptor 150 |
| GPR153 | 387509 | 221902_at | Probable G-protein coupled receptor 153 |
| GPR153 | 387509 | 64942_at | Probable G-protein coupled receptor 153 |
| GPR156 | 165829 | 239607_at | Probable G-protein coupled receptor 156 |
| GPR157 | 80045 | 220901_at | Probable G-protein coupled receptor 157 |
| GPR157 | 80045 | 227970_at | Probable G-protein coupled receptor 157 |
| GPR158 | 57512 | 232195_at | Probable G-protein coupled receptor 158 |
| GPR160 | 26996 | 223423_at | Probable G-protein coupled receptor 160 |
| GPR161 | 23432 | 206971_at | G-protein coupled receptor 161 |
| GPR161 | 23432 | 206972_s_at | G-protein coupled receptor 161 |
| GPR161 | 23432 | 214104_at | G-protein coupled receptor 161 |
| GPR161 | 23432 | 230369_at | G-protein coupled receptor 161 |
| GPR161 | 23432 | 232350_x_at | G-protein coupled receptor 161 |
| GPR161 | 23432 | 235961_at | G-protein coupled receptor 161 |
| GPR162 | 27239 | 205056_s_at | Probable G-protein coupled receptor 162 |
| GPR17 | 2840 | 206190_at | Uracil nucleotide/cysteinyl leukotriene receptor |
| GPR17 | 2840 | 215225_s_at | Uracil nucleotide/cysteinyl leukotriene receptor |
| GPR171 | 29909 | 207651_at | Probable G-protein coupled receptor 171 |
| GPR172A | 79581 | 218151_x_at | Porcine endogenous retrovirus A receptor 1 |
| GPR172A | 79581 | 222155_s_at | Porcine endogenous retrovirus A receptor 1 |
| GPR172B | 55065 | 220756_s_at | Porcine endogenous retrovirus A receptor 2 |
| GPR173 | 54328 | 221299_at | Probable G-protein coupled receptor 173 |
| GPR173 | 54328 | 244877_at | Probable G-protein coupled receptor 173 |
| GPR174 | 84636 | 224285_at | Probable G-protein coupled receptor 174 |
| GPR176 | 11245 | 206673_at | Probable G-protein coupled receptor 176 |
| GPR176 | 11245 | 227846_at | Probable G-protein coupled receptor 176 |
| GPR18 | 2841 | 210279_at | N-arachidonyl glycine receptor |
| GPR182 | 11318 | 214506_at | G-protein coupled receptor 182 |
| GPR183 | 1880 | 205419_at | G-protein coupled receptor 183 |
| GPR19 | 2842 | 207183_at | Probable G-protein coupled receptor 19 |
| GPR20 | 2843 | 214510_at | G-protein coupled receptor 20 |
| GPR21 | 2844 | 221294_at | Probable G-protein coupled receptor 21 |
| GPR22 | 2845 | 221288_at | Probable G-protein coupled receptor 22 |
| GPR22 | 2845 | 244493_at | Probable G-protein coupled receptor 22 |
| GPR25 | 2848 | 221363_x_at | Probable G-protein coupled receptor 25 |
| GPR26 | 2849 | 244617_at | G-protein coupled receptor 26 |
| GPR27 | 2850 | 221306_at | Probable G-protein coupled receptor 27 |
| GPR3 | 2827 | 214613_at | G-protein coupled receptor 3 |
| GPR31 | 2853 | 208556_at | Probable G-protein coupled receptor 31 |
| GPR32 | 2854 | 221469_at | Probable G-protein coupled receptor 32 |
| GPR34 | 2857 | 223620_at | Probable G-protein coupled receptor 34 |
| GPR35 | 2859 | 210264_at | G-protein coupled receptor 35 |
| GPR37 | 2861 | 209631_s_at | Probable G-protein coupled receptor 37 |
| GPR37 | 2861 | 214586_at | Probable G-protein coupled receptor 37 |
| GPR37L1 | 9283 | 207055_at | Endothelin B receptor-like protein 2 |
| GPR39 | 2863 | 208600_s_at | G-protein coupled receptor 39 |
| GPR39 | 2863 | 229104_s_at | G-protein coupled receptor 39 |

| | | | |
|---------|--------|-------------|--|
| GPR39 | 2863 | 229105_at | G-protein coupled receptor 39 |
| GPR4 | 2828 | 206236_at | G-protein coupled receptor 4 |
| GPR4 | 2828 | 211266_s_at | G-protein coupled receptor 4 |
| GPR44 | 11251 | 206361_at | Putative G-protein coupled receptor 44 |
| GPR44 | 11251 | 216464_x_at | Putative G-protein coupled receptor 44 |
| GPR45 | 11250 | 211175_at | Probable G-protein coupled receptor 45 |
| GPR50 | 9248 | 208311_at | Melatonin-related receptor |
| GPR52 | 9293 | 221313_at | Probable G-protein coupled receptor 52 |
| GPR55 | 9290 | 231745_at | G-protein coupled receptor 55 |
| GPR55 | 9290 | 237559_at | G-protein coupled receptor 55 |
| GPR56 | 9289 | 206582_s_at | G-protein coupled receptor 56 |
| GPR56 | 9289 | 212070_at | G-protein coupled receptor 56 |
| GPR6 | 2830 | 214655_at | G-protein coupled receptor 6 |
| GPR61 | 83873 | 224531_at | Probable G-protein coupled receptor 61 |
| GPR63 | 81491 | 220993_s_at | Probable G-protein coupled receptor 63 |
| GPR64 | 10149 | 206002_at | G-protein coupled receptor 64 |
| GPR65 | 8477 | 214467_at | Psychosine receptor |
| GPR68 | 8111 | 211249_at | Ovarian cancer G-protein coupled receptor 1 |
| GPR68 | 8111 | 229055_at | Ovarian cancer G-protein coupled receptor 1 |
| GPR75 | 10936 | 220481_at | Probable G-protein coupled receptor 75 |
| GPR77 | 27202 | 221149_at | C5a anaphylatoxin chemotactic receptor C5L2 |
| GPR81 | 27198 | 224131_at | G-protein coupled receptor 81 |
| GPR83 | 10888 | 222953_at | Probable G-protein coupled receptor 83 |
| GPR84 | 53831 | 223767_at | G-protein coupled receptor 84 |
| GPR85 | 54329 | 219898_at | Probable G-protein coupled receptor 85 |
| GPR85 | 54329 | 234303_s_at | Probable G-protein coupled receptor 85 |
| GPR87 | 53836 | 219936_s_at | G-protein coupled receptor 87 |
| GPR88 | 54112 | 220313_at | Probable G-protein coupled receptor 88 |
| GPR97 | 222487 | 220404_at | Probable G-protein coupled receptor 97 |
| GPR98 | 84059 | 215396_at | G-protein coupled receptor 98 |
| GPR98 | 84059 | 223582_at | G-protein coupled receptor 98 |
| GPR98 | 84059 | 224275_at | G-protein coupled receptor 98 |
| GPR98 | 84059 | 234871_at | G-protein coupled receptor 98 |
| GPR98 | 84059 | 240631_at | G-protein coupled receptor 98 |
| GPRASP1 | 9737 | 204793_at | G-protein coupled receptor-associated sorting protein 1 |
| GPRASP2 | 114928 | 228027_at | G-protein coupled receptor-associated sorting protein 2 |
| GPRC5C | 55890 | 219327_s_at | G-protein coupled receptor family C group 5 member C |
| GPRC5C | 55890 | 230907_at | G-protein coupled receptor family C group 5 member C |
| GPRC5D | 55507 | 221297_at | G-protein coupled receptor family C group 5 member D |
| GRASP | 160622 | 228263_at | General receptor for phosphoinositides 1-associated scaffold protein |
| GRB10 | 2887 | 209409_at | Growth factor receptor-bound protein 10 |
| GRB10 | 2887 | 209410_s_at | Growth factor receptor-bound protein 10 |
| GRB10 | 2887 | 210999_s_at | Growth factor receptor-bound protein 10 |
| GRB10 | 2887 | 215248_at | Growth factor receptor-bound protein 10 |
| GRB14 | 2888 | 206204_at | Growth factor receptor-bound protein 14 |
| GRB2 | 2885 | 215075_s_at | Growth factor receptor-bound protein 2 |
| GRB2 | 2885 | 223049_at | Growth factor receptor-bound protein 2 |
| GRB2 | 2885 | 228572_at | Growth factor receptor-bound protein 2 |
| GRB7 | 2886 | 210761_s_at | Growth factor receptor-bound protein 7 |

| | | | |
|--------|--------|-------------|--|
| GRIA1 | 2890 | 209793_at | Glutamate receptor 1 |
| GRIA1 | 2890 | 211520_s_at | Glutamate receptor 1 |
| GRIA2 | 2891 | 205358_at | Glutamate receptor 2 |
| GRIA2 | 2891 | 236538_at | Glutamate receptor 2 |
| GRIA2 | 2891 | 241172_at | Glutamate receptor 2 |
| GRIA3 | 2892 | 206730_at | Glutamate receptor 3 |
| GRIA3 | 2892 | 208032_s_at | Glutamate receptor 3 |
| GRIA3 | 2892 | 217565_at | Glutamate receptor 3 |
| GRIA3 | 2892 | 230144_at | Glutamate receptor 3 |
| GRIA4 | 2893 | 208464_at | Glutamate receptor 4 |
| GRIA4 | 2893 | 238663_x_at | Glutamate receptor 4 |
| GRID1 | 2894 | 231977_at | Glutamate receptor delta-1 subunit |
| GRID2 | 2895 | 221364_at | Glutamate receptor delta-2 subunit |
| GRIK1 | 2897 | 207242_s_at | "Glutamate receptor, ionotropic kainate 1" |
| GRIK1 | 2897 | 214611_at | "Glutamate receptor, ionotropic kainate 1" |
| GRIK2 | 2898 | 213845_at | "Glutamate receptor, ionotropic kainate 2" |
| GRIK2 | 2898 | 215655_at | "Glutamate receptor, ionotropic kainate 2" |
| GRIK3 | 2899 | 207454_at | "Glutamate receptor, ionotropic kainate 3" |
| GRIK3 | 2899 | 230593_at | "Glutamate receptor, ionotropic kainate 3" |
| GRIK4 | 2900 | 208552_at | "Glutamate receptor, ionotropic kainate 4" |
| GRIK4 | 2900 | 242215_at | "Glutamate receptor, ionotropic kainate 4" |
| GRIK5 | 2901 | 214966_at | "Glutamate receptor, ionotropic kainate 5" |
| GRIK5 | 2901 | 217509_x_at | "Glutamate receptor, ionotropic kainate 5" |
| GRIN1 | 2902 | 205914_s_at | Glutamate [NMDA] receptor subunit zeta-1 |
| GRIN1 | 2902 | 205915_x_at | Glutamate [NMDA] receptor subunit zeta-1 |
| GRIN1 | 2902 | 210781_x_at | Glutamate [NMDA] receptor subunit zeta-1 |
| GRIN1 | 2902 | 210782_x_at | Glutamate [NMDA] receptor subunit zeta-1 |
| GRIN1 | 2902 | 211125_x_at | Glutamate [NMDA] receptor subunit zeta-1 |
| GRIN2A | 2903 | 206534_at | Glutamate [NMDA] receptor subunit epsilon-1 |
| GRIN2A | 2903 | 231384_at | Glutamate [NMDA] receptor subunit epsilon-1 |
| GRIN2A | 2903 | 242286_at | Glutamate [NMDA] receptor subunit epsilon-1 |
| GRIN2B | 2904 | 210411_s_at | Glutamate [NMDA] receptor subunit epsilon-2 |
| GRIN2B | 2904 | 210412_at | Glutamate [NMDA] receptor subunit epsilon-2 |
| GRIN2C | 2905 | 210400_at | Glutamate [NMDA] receptor subunit epsilon-3 |
| GRIN2C | 2905 | 217573_at | Glutamate [NMDA] receptor subunit epsilon-3 |
| GRIN2D | 2906 | 207036_x_at | Glutamate [NMDA] receptor subunit epsilon-4 |
| GRIN2D | 2906 | 229883_at | Glutamate [NMDA] receptor subunit epsilon-4 |
| GRIN3A | 116443 | 233171_at | Glutamate [NMDA] receptor subunit 3A |
| GRIN3A | 116443 | 233220_at | Glutamate [NMDA] receptor subunit 3A |
| GRIN3B | 116444 | 233892_at | Glutamate [NMDA] receptor subunit 3B |
| GRINA | 2907 | 212090_at | Glutamate [NMDA] receptor-associated protein 1 |
| GRIP1 | 23426 | 214018_at | Glutamate receptor-interacting protein 1 |
| GRIP1 | 23426 | 235957_at | Glutamate receptor-interacting protein 1 |
| GRIP2 | 80852 | 216481_at | Glutamate receptor-interacting protein 2 |
| GRK4 | 2868 | 208365_s_at | G protein-coupled receptor kinase 4 |
| GRK4 | 2868 | 210600_s_at | G protein-coupled receptor kinase 4 |
| GRK4 | 2868 | 241989_at | G protein-coupled receptor kinase 4 |
| GRK5 | 2869 | 204395_s_at | G protein-coupled receptor kinase 5 |
| GRK5 | 2869 | 204396_s_at | G protein-coupled receptor kinase 5 |

| | | | |
|--------|-------|-------------|--|
| GRK6 | 2870 | 202848_s_at | G protein-coupled receptor kinase 6 |
| GRK6 | 2870 | 202849_x_at | G protein-coupled receptor kinase 6 |
| GRK6 | 2870 | 210981_s_at | G protein-coupled receptor kinase 6 |
| GRK6 | 2870 | 211543_s_at | G protein-coupled receptor kinase 6 |
| GRLF1 | 2909 | 202044_at | Glucocorticoid receptor DNA-binding factor 1 |
| GRLF1 | 2909 | 202045_s_at | Glucocorticoid receptor DNA-binding factor 1 |
| GRLF1 | 2909 | 202046_s_at | Glucocorticoid receptor DNA-binding factor 1 |
| GRLF1 | 2909 | 229394_s_at | Glucocorticoid receptor DNA-binding factor 1 |
| GRLF1 | 2909 | 229397_s_at | Glucocorticoid receptor DNA-binding factor 1 |
| GRM1 | 2911 | 207299_s_at | Metabotropic glutamate receptor 1 |
| GRM1 | 2911 | 210939_s_at | Metabotropic glutamate receptor 1 |
| GRM1 | 2911 | 210940_s_at | Metabotropic glutamate receptor 1 |
| GRM2 | 2912 | 208465_at | Metabotropic glutamate receptor 2 |
| GRM2 | 2912 | 241802_x_at | Metabotropic glutamate receptor 2 |
| GRM3 | 2913 | 205814_at | Metabotropic glutamate receptor 3 |
| GRM4 | 2914 | 210234_at | Metabotropic glutamate receptor 4 |
| GRM5 | 2915 | 207235_s_at | Metabotropic glutamate receptor 5 |
| GRM5 | 2915 | 214217_at | Metabotropic glutamate receptor 5 |
| GRM6 | 2916 | 208035_at | Metabotropic glutamate receptor 6 |
| GRM7 | 2917 | 207548_at | Metabotropic glutamate receptor 7 |
| GRM7 | 2917 | 217008_s_at | Metabotropic glutamate receptor 7 |
| GRM7 | 2917 | 241049_at | Metabotropic glutamate receptor 7 |
| GRM8 | 2918 | 216255_s_at | Metabotropic glutamate receptor 8 |
| GRM8 | 2918 | 216256_at | Metabotropic glutamate receptor 8 |
| GRM8 | 2918 | 216992_s_at | Metabotropic glutamate receptor 8 |
| GRPR | 2925 | 207929_at | Gastrin-releasing peptide receptor |
| GUCY2C | 2984 | 206312_at | Heat-stable enterotoxin receptor |
| HAVCR1 | 26762 | 207052_at | Hepatitis A virus cellular receptor 1 |
| HAVCR2 | 84868 | 235458_at | Hepatitis A virus cellular receptor 2 |
| HCRTR1 | 3061 | 207619_at | Orexin receptor type 1 |
| HCRTR2 | 3062 | 207393_at | Orexin receptor type 2 |
| HMMR | 3161 | 207165_at | Hyaluronan mediated motility receptor |
| HMMR | 3161 | 209709_s_at | Hyaluronan mediated motility receptor |
| HRH1 | 3269 | 205579_at | Histamine H1 receptor |
| HRH1 | 3269 | 205580_s_at | Histamine H1 receptor |
| HRH2 | 3274 | 220805_at | Histamine H2 receptor |
| HRH3 | 11255 | 220447_at | Histamine H3 receptor |
| HRH3 | 11255 | 221663_x_at | Histamine H3 receptor |
| HRH4 | 59340 | 221169_s_at | Histamine H4 receptor |
| HRH4 | 59340 | 221170_at | Histamine H4 receptor |
| HTR1A | 3350 | 221351_at | 5-hydroxytryptamine receptor 1A |
| HTR1B | 3351 | 210799_at | 5-hydroxytryptamine receptor 1B |
| HTR1D | 3352 | 207368_at | 5-hydroxytryptamine receptor 1D |
| HTR1E | 3354 | 207404_s_at | 5-hydroxytryptamine receptor 1E |
| HTR1F | 3355 | 221458_at | 5-hydroxytryptamine receptor 1F |
| HTR2A | 3356 | 207135_at | 5-hydroxytryptamine receptor 2A |
| HTR2A | 3356 | 211616_s_at | 5-hydroxytryptamine receptor 2A |
| HTR2B | 3357 | 206638_at | 5-hydroxytryptamine receptor 2B |
| HTR2C | 3358 | 207307_at | 5-hydroxytryptamine receptor 2C |

| | | | |
|---------|-------|-------------|---|
| HTR2C | 3358 | 211479_s_at | 5-hydroxytryptamine receptor 2C |
| HTR3A | 3359 | 216615_s_at | 5-hydroxytryptamine receptor 3A |
| HTR3A | 3359 | 217002_s_at | 5-hydroxytryptamine receptor 3A |
| HTR3B | 9177 | 221084_at | 5-hydroxytryptamine receptor 3B |
| HTR4 | 3360 | 207577_at | 5-hydroxytryptamine receptor 4 |
| HTR4 | 3360 | 207578_s_at | 5-hydroxytryptamine receptor 4 |
| HTR4 | 3360 | 216939_s_at | 5-hydroxytryptamine receptor 4 |
| HTR5A | 3361 | 221362_at | 5-hydroxytryptamine receptor 5A |
| HTR6 | 3362 | 206944_at | 5-hydroxytryptamine receptor 6 |
| HTR7 | 3363 | 207818_s_at | 5-hydroxytryptamine receptor 7 |
| HTR7 | 3363 | 207927_at | 5-hydroxytryptamine receptor 7 |
| HTR7 | 3363 | 236281_x_at | 5-hydroxytryptamine receptor 7 |
| IFNAR1 | 3454 | 204191_at | Interferon alpha/beta receptor 1 |
| IFNAR1 | 3454 | 225661_at | Interferon alpha/beta receptor 1 |
| IFNAR1 | 3454 | 225669_at | Interferon alpha/beta receptor 1 |
| IFNAR1 | 3454 | 236478_at | Interferon alpha/beta receptor 1 |
| IFNAR2 | 3455 | 204785_x_at | Interferon alpha/beta receptor 2 |
| IFNAR2 | 3455 | 204786_s_at | Interferon alpha/beta receptor 2 |
| IFNGR1 | 3459 | 202727_s_at | Interferon gamma receptor 1 |
| IFNGR1 | 3459 | 211676_s_at | Interferon gamma receptor 1 |
| IFNGR1 | 3459 | 242903_at | Interferon gamma receptor 1 |
| IFNGR2 | 3460 | 201642_at | Interferon gamma receptor 2 |
| IGF1R | 3480 | 203627_at | Insulin-like growth factor 1 receptor |
| IGF1R | 3480 | 203628_at | Insulin-like growth factor 1 receptor |
| IGF1R | 3480 | 208441_at | Insulin-like growth factor 1 receptor |
| IGF1R | 3480 | 225330_at | Insulin-like growth factor 1 receptor |
| IGF1R | 3480 | 243358_at | Insulin-like growth factor 1 receptor |
| IGF2R | 3482 | 201392_s_at | Cation-independent mannose-6-phosphate receptor |
| IGF2R | 3482 | 201393_s_at | Cation-independent mannose-6-phosphate receptor |
| IL10RA | 3587 | 204912_at | Interleukin-10 receptor subunit alpha |
| IL10RB | 3588 | 209575_at | Interleukin-10 receptor subunit beta |
| IL11RA | 3590 | 204773_at | Interleukin-11 receptor subunit alpha |
| IL12RB1 | 3594 | 206890_at | Interleukin-12 receptor subunit beta-1 |
| IL12RB1 | 3594 | 239522_at | Interleukin-12 receptor subunit beta-1 |
| IL12RB2 | 3595 | 206999_at | Interleukin-12 receptor subunit beta-2 |
| IL13RA1 | 3597 | 201887_at | Interleukin-13 receptor subunit alpha-1 |
| IL13RA1 | 3597 | 201888_s_at | Interleukin-13 receptor subunit alpha-1 |
| IL13RA1 | 3597 | 210904_s_at | Interleukin-13 receptor subunit alpha-1 |
| IL13RA1 | 3597 | 211612_s_at | Interleukin-13 receptor subunit alpha-1 |
| IL13RA2 | 3598 | 206172_at | Interleukin-13 receptor subunit alpha-2 |
| IL15RA | 3601 | 207375_s_at | Interleukin-15 receptor subunit alpha |
| IL17RA | 23765 | 205707_at | Interleukin-17 receptor A |
| IL17RB | 55540 | 219255_x_at | Interleukin-17 receptor B |
| IL17RB | 55540 | 224156_x_at | Interleukin-17 receptor B |
| IL17RB | 55540 | 224361_s_at | Interleukin-17 receptor B |
| IL17RC | 84818 | 221926_s_at | Interleukin-17 receptor C |
| IL17RC | 84818 | 224514_x_at | Interleukin-17 receptor C |
| IL17RC | 84818 | 64440_at | Interleukin-17 receptor C |
| IL17RD | 54756 | 227997_at | Interleukin-17 receptor D |

| | | | |
|----------|--------|-------------|--|
| IL17RD | 54756 | 229263_at | Interleukin-17 receptor D |
| IL17RE | 132014 | 229401_at | Interleukin-17 receptor E |
| IL17RE | 132014 | 236186_x_at | Interleukin-17 receptor E |
| IL18R1 | 8809 | 206618_at | Interleukin-18 receptor 1 |
| IL18RAP | 8807 | 207072_at | Interleukin-18 receptor accessory protein |
| IL1R1 | 3554 | 202948_at | Interleukin-1 receptor type 1 |
| IL1R1 | 3554 | 215561_s_at | Interleukin-1 receptor type 1 |
| IL1R2 | 7850 | 205403_at | Interleukin-1 receptor type 2 |
| IL1R2 | 7850 | 211372_s_at | Interleukin-1 receptor type 2 |
| IL1RAP | 3556 | 205227_at | Interleukin-1 receptor accessory protein |
| IL1RAP | 3556 | 210233_at | Interleukin-1 receptor accessory protein |
| IL1RAPL1 | 11141 | 220663_at | Interleukin-1 receptor accessory protein-like 1 |
| IL1RAPL1 | 11141 | 222963_s_at | Interleukin-1 receptor accessory protein-like 1 |
| IL1RAPL2 | 26280 | 221112_at | X-linked interleukin-1 receptor accessory protein-like 2 |
| IL1RL1 | 9173 | 207526_s_at | Interleukin-1 receptor-like 1 |
| IL1RL1 | 9173 | 210442_at | Interleukin-1 receptor-like 1 |
| IL1RL1 | 9173 | 234066_at | Interleukin-1 receptor-like 1 |
| IL1RL1 | 9173 | 242809_at | Interleukin-1 receptor-like 1 |
| IL1RL2 | 8808 | 208038_at | Interleukin-1 receptor-like 2 |
| IL1RN | 3557 | 212657_s_at | Interleukin-1 receptor antagonist protein |
| IL1RN | 3557 | 212659_s_at | Interleukin-1 receptor antagonist protein |
| IL1RN | 3557 | 216243_s_at | Interleukin-1 receptor antagonist protein |
| IL1RN | 3557 | 216244_at | Interleukin-1 receptor antagonist protein |
| IL1RN | 3557 | 216245_at | Interleukin-1 receptor antagonist protein |
| IL20RA | 53832 | 219115_s_at | Interleukin-20 receptor subunit alpha |
| IL20RA | 53832 | 222828_at | Interleukin-20 receptor subunit alpha |
| IL20RA | 53832 | 222829_s_at | Interleukin-20 receptor subunit alpha |
| IL20RA | 53832 | 240396_at | Interleukin-20 receptor subunit alpha |
| IL20RB | 53833 | 228575_at | Interleukin-20 receptor subunit beta |
| IL21R | 50615 | 219971_at | Interleukin-21 receptor |
| IL21R | 50615 | 221658_s_at | Interleukin-21 receptor |
| IL22RA1 | 58985 | 220056_at | Interleukin-22 receptor subunit alpha-1 |
| IL22RA2 | 116379 | 237493_at | Interleukin-22 receptor subunit alpha-2 |
| IL27RA | 9466 | 205926_at | Interleukin-27 receptor subunit alpha |
| IL27RA | 9466 | 217702_at | Interleukin-27 receptor subunit alpha |
| IL27RA | 9466 | 222062_at | Interleukin-27 receptor subunit alpha |
| IL28RA | 163702 | 244261_at | Interleukin-28 receptor subunit alpha |
| IL2RA | 3559 | 206341_at | Interleukin-2 receptor subunit alpha |
| IL2RA | 3559 | 211269_s_at | Interleukin-2 receptor subunit alpha |
| IL2RB | 3560 | 205291_at | Interleukin-2 receptor subunit beta |
| IL2RG | 3561 | 204116_at | Cytokine receptor common subunit gamma |
| IL31RA | 133396 | 243541_at | Interleukin-31 receptor subunit alpha |
| IL3RA | 3563 | 206148_at | Interleukin-3 receptor subunit alpha |
| IL4R | 3566 | 203233_at | Interleukin-4 receptor subunit alpha |
| IL4R | 3566 | 242743_at | Interleukin-4 receptor subunit alpha |
| IL5RA | 3568 | 207902_at | Interleukin-5 receptor subunit alpha |
| IL5RA | 3568 | 210744_s_at | Interleukin-5 receptor subunit alpha |
| IL5RA | 3568 | 211516_at | Interleukin-5 receptor subunit alpha |
| IL5RA | 3568 | 211517_s_at | Interleukin-5 receptor subunit alpha |

| | | | |
|----------|--------|-------------|--|
| IL6R | 3570 | 205945_at | Interleukin-6 receptor subunit alpha |
| IL6R | 3570 | 217489_s_at | Interleukin-6 receptor subunit alpha |
| IL6R | 3570 | 226333_at | Interleukin-6 receptor subunit alpha |
| IL6ST | 3572 | 204863_s_at | Interleukin-6 receptor subunit beta |
| IL6ST | 3572 | 204864_s_at | Interleukin-6 receptor subunit beta |
| IL6ST | 3572 | 211000_s_at | Interleukin-6 receptor subunit beta |
| IL6ST | 3572 | 212195_at | Interleukin-6 receptor subunit beta |
| IL6ST | 3572 | 212196_at | Interleukin-6 receptor subunit beta |
| IL6ST | 3572 | 234474_x_at | Interleukin-6 receptor subunit beta |
| IL6ST | 3572 | 234967_at | Interleukin-6 receptor subunit beta |
| IL7R | 3575 | 205798_at | Interleukin-7 receptor subunit alpha |
| IL7R | 3575 | 226218_at | Interleukin-7 receptor subunit alpha |
| IL9R | 3581 | 208164_s_at | Interleukin-9 receptor |
| IL9R | 3581 | 214950_at | Interleukin-9 receptor |
| IL9R | 3581 | 217212_s_at | Interleukin-9 receptor |
| ILDR1 | 286676 | 235583_at | Immunoglobulin-like domain-containing receptor 1 |
| IMPG1 | 3617 | 207054_at | Interphotoreceptor matrix proteoglycan 1 |
| IMPG2 | 50939 | 220830_at | Interphotoreceptor matrix proteoglycan 2 |
| INSR | 3643 | 207851_s_at | Insulin receptor |
| INSR | 3643 | 213792_s_at | Insulin receptor |
| INSR | 3643 | 226212_s_at | Insulin receptor |
| INSR | 3643 | 226216_at | Insulin receptor |
| INSR | 3643 | 226450_at | Insulin receptor |
| INSR | 3643 | 227432_s_at | Insulin receptor |
| INSRR | 3645 | 215776_at | Insulin receptor-related protein |
| IRAK1 | 3654 | 201587_s_at | Interleukin-1 receptor-associated kinase 1 |
| IRAK1BP1 | 134728 | 238599_at | Interleukin-1 receptor-associated kinase 1-binding protein 1 |
| IRAK2 | 3656 | 231779_at | Interleukin-1 receptor-associated kinase-like 2 |
| IRAK3 | 11213 | 213817_at | Interleukin-1 receptor-associated kinase 3 |
| IRAK3 | 11213 | 220034_at | Interleukin-1 receptor-associated kinase 3 |
| IRAK4 | 51135 | 219618_at | Interleukin-1 receptor-associated kinase 4 |
| IRS1 | 3667 | 204686_at | Insulin receptor substrate 1 |
| IRS1 | 3667 | 235392_at | Insulin receptor substrate 1 |
| IRS1 | 3667 | 238933_at | Insulin receptor substrate 1 |
| IRS1 | 3667 | 242979_at | Insulin receptor substrate 1 |
| IRS2 | 8660 | 209184_s_at | Insulin receptor substrate 2 |
| IRS2 | 8660 | 209185_s_at | Insulin receptor substrate 2 |
| IRS4 | 8471 | 207403_at | Insulin receptor substrate 4 |
| ITPR1 | 3708 | 203710_at | "Inositol 1,4,5-trisphosphate receptor type 1" |
| ITPR1 | 3708 | 211323_s_at | "Inositol 1,4,5-trisphosphate receptor type 1" |
| ITPR1 | 3708 | 216944_s_at | "Inositol 1,4,5-trisphosphate receptor type 1" |
| ITPR1 | 3708 | 240052_at | "Inositol 1,4,5-trisphosphate receptor type 1" |
| ITPR2 | 3709 | 202660_at | "Inositol 1,4,5-trisphosphate receptor type 2" |
| ITPR2 | 3709 | 202661_at | "Inositol 1,4,5-trisphosphate receptor type 2" |
| ITPR2 | 3709 | 202662_s_at | "Inositol 1,4,5-trisphosphate receptor type 2" |
| ITPR2 | 3709 | 211360_s_at | "Inositol 1,4,5-trisphosphate receptor type 2" |
| ITPR3 | 3710 | 201187_s_at | "Inositol 1,4,5-trisphosphate receptor type 3" |
| ITPR3 | 3710 | 201188_s_at | "Inositol 1,4,5-trisphosphate receptor type 3" |
| ITPR3 | 3710 | 201189_s_at | "Inositol 1,4,5-trisphosphate receptor type 3" |

| | | | |
|----------|-----------|-------------|--|
| ITPR3 | 3710 | 239542_at | "Inositol 1,4,5-trisphosphate receptor type 3" |
| ITPRIP | 85450 | 225582_at | "Inositol 1,4,5-trisphosphate receptor-interacting protein" |
| ITPRIPL1 | 150771 | 240037_at | "Inositol 1,4,5-trisphosphate receptor-interacting protein-like 1" |
| ITPRIPL2 | 162073 | 227514_at | "Inositol 1,4,5-trisphosphate receptor-interacting protein-like 2" |
| ITPRIPL2 | 162073 | 227792_at | "Inositol 1,4,5-trisphosphate receptor-interacting protein-like 2" |
| ITPRIPL2 | 162073 | 227954_at | "Inositol 1,4,5-trisphosphate receptor-interacting protein-like 2" |
| ITPRIPL2 | 162073 | 227956_at | "Inositol 1,4,5-trisphosphate receptor-interacting protein-like 2" |
| ITPRIPL2 | 162073 | 228074_at | "Inositol 1,4,5-trisphosphate receptor-interacting protein-like 2" |
| KDELRL1 | 10945 | 200922_at | ER lumen protein retaining receptor 1 |
| KDELRL2 | 11014 | 200698_at | ER lumen protein retaining receptor 2 |
| KDELRL2 | 11014 | 200699_at | ER lumen protein retaining receptor 2 |
| KDELRL2 | 11014 | 200700_s_at | ER lumen protein retaining receptor 2 |
| KDELRL3 | 11015 | 204017_at | ER lumen protein retaining receptor 3 |
| KDELRL3 | 11015 | 207264_at | ER lumen protein retaining receptor 3 |
| KDELRL3 | 11015 | 207265_s_at | ER lumen protein retaining receptor 3 |
| KDR | 3791 | 203934_at | Vascular endothelial growth factor receptor 2 |
| KIR2DL1 | 3802 | 210890_x_at | Killer cell immunoglobulin-like receptor 2DL1 |
| KIR2DL1 | 3802 | 217296_at | Killer cell immunoglobulin-like receptor 2DL1 |
| KIR2DL2 | 3803 | 211397_x_at | Killer cell immunoglobulin-like receptor 2DL2 |
| KIR2DL3 | 3804 | 208179_x_at | Killer cell immunoglobulin-like receptor 2DL3 |
| KIR2DL4 | 3805 | 211242_x_at | Killer cell immunoglobulin-like receptor 2DL4 |
| KIR2DL4 | 3805 | 211245_x_at | Killer cell immunoglobulin-like receptor 2DL4 |
| KIR2DL5A | 57292 | 211410_x_at | Killer cell immunoglobulin-like receptor 2DL5A |
| KIR2DS1 | 3806 | 208198_x_at | Killer cell immunoglobulin-like receptor 2DS1 |
| KIR2DS2 | 100132285 | 211532_x_at | Killer cell immunoglobulin-like receptor 2DS2 |
| KIR2DS3 | 3808 | 208122_x_at | Killer cell immunoglobulin-like receptor 2DS3 |
| KIR2DS5 | 3810 | 208203_x_at | Killer cell immunoglobulin-like receptor 2DS5 |
| KIR3DL1 | 3811 | 211687_x_at | Killer cell immunoglobulin-like receptor 3DL1 |
| KIR3DL3 | 115653 | 216676_x_at | Killer cell immunoglobulin-like receptor 3DL3 |
| KIR3DS1 | 3813 | 211389_x_at | Killer cell immunoglobulin-like receptor 3DS1 |
| KIR3DX1 | 90011 | 216428_x_at | Putative killer cell immunoglobulin-like receptor-like protein KIR3DX1 |
| KIR3DX1 | 90011 | 216492_at | Putative killer cell immunoglobulin-like receptor-like protein KIR3DX1 |
| KISS1R | 84634 | 242517_at | KiSS-1 receptor |
| KIT | 3815 | 205051_s_at | Mast/stem cell growth factor receptor |
| KLRB1 | 3820 | 214470_at | Killer cell lectin-like receptor subfamily B member 1 |
| KLRB1 | 3820 | 242628_at | Killer cell lectin-like receptor subfamily B member 1 |
| KLRF1 | 51348 | 220646_s_at | Killer cell lectin-like receptor subfamily F member 1 |
| KLRG1 | 10219 | 210288_at | Killer cell lectin-like receptor subfamily G member 1 |
| KLRG2 | 346689 | 231195_at | Killer cell lectin-like receptor subfamily G member 2 |
| KLRG2 | 346689 | 244264_at | Killer cell lectin-like receptor subfamily G member 2 |
| LAIR1 | 3903 | 208071_s_at | Leukocyte-associated immunoglobulin-like receptor 1 |
| LAIR1 | 3903 | 210644_s_at | Leukocyte-associated immunoglobulin-like receptor 1 |
| LAIR2 | 3904 | 207509_s_at | Leukocyte-associated immunoglobulin-like receptor 2 |
| LBR | 3930 | 201795_at | Lamin-B receptor |
| LCORL | 254251 | 232293_at | Ligand-dependent nuclear receptor corepressor-like protein |
| LCORL | 254251 | 235970_at | Ligand-dependent nuclear receptor corepressor-like protein |
| LCORL | 254251 | 240592_at | Ligand-dependent nuclear receptor corepressor-like protein |
| LDLR | 3949 | 202067_s_at | Low-density lipoprotein receptor |
| LDLR | 3949 | 202068_s_at | Low-density lipoprotein receptor |

| | | | |
|----------|--------|-------------|--|
| LDLR | 3949 | 217005_at | Low-density lipoprotein receptor |
| LDLR | 3949 | 217103_at | Low-density lipoprotein receptor |
| LDLR | 3949 | 217173_s_at | Low-density lipoprotein receptor |
| LDLR | 3949 | 217183_at | Low-density lipoprotein receptor |
| LDLRAD3 | 143458 | 234985_at | Low-density lipoprotein receptor class A domain-containing protein 3 |
| LDLRAP1 | 26119 | 221790_s_at | Low density lipoprotein receptor adapter protein 1 |
| LDLRAP1 | 26119 | 57082_at | Low density lipoprotein receptor adapter protein 1 |
| LENG1 | 79165 | 232018_at | Leukocyte receptor cluster member 1 |
| LENG8 | 114823 | 224673_at | Leukocyte receptor cluster member 8 |
| LEPR | 3953 | 202377_at | Leptin receptor |
| LEPR | 3953 | 207255_at | Leptin receptor |
| LEPR | 3953 | 209894_at | Leptin receptor |
| LEPR | 3953 | 211354_s_at | Leptin receptor |
| LEPR | 3953 | 211355_x_at | Leptin receptor |
| LEPR | 3953 | 211356_x_at | Leptin receptor |
| LEPR | 3953 | 227095_at | Leptin receptor |
| LEPROT | 54741 | 202378_s_at | Leptin receptor gene-related protein |
| LEPROTL1 | 23484 | 202594_at | Leptin receptor overlapping transcript-like 1 |
| LEPROTL1 | 23484 | 202595_s_at | Leptin receptor overlapping transcript-like 1 |
| LGR4 | 55366 | 218326_s_at | Leucine-rich repeat-containing G-protein coupled receptor 4 |
| LGR4 | 55366 | 222596_s_at | Leucine-rich repeat-containing G-protein coupled receptor 4 |
| LGR4 | 55366 | 230674_at | Leucine-rich repeat-containing G-protein coupled receptor 4 |
| LGR5 | 8549 | 210393_at | Leucine-rich repeat-containing G-protein coupled receptor 5 |
| LGR5 | 8549 | 213880_at | Leucine-rich repeat-containing G-protein coupled receptor 5 |
| LGR6 | 59352 | 227819_at | Leucine-rich repeat-containing G-protein coupled receptor 6 |
| LHCGR | 3973 | 207240_s_at | Lutropin-choriogonadotropic hormone receptor |
| LIFR | 3977 | 205876_at | Leukemia inhibitory factor receptor |
| LIFR | 3977 | 225571_at | Leukemia inhibitory factor receptor |
| LIFR | 3977 | 225575_at | Leukemia inhibitory factor receptor |
| LIFR | 3977 | 227771_at | Leukemia inhibitory factor receptor |
| LILRA1 | 11024 | 207872_s_at | Leukocyte immunoglobulin-like receptor subfamily A member 1 |
| LILRA1 | 11024 | 210660_at | Leukocyte immunoglobulin-like receptor subfamily A member 1 |
| LILRA2 | 11027 | 207857_at | Leukocyte immunoglobulin-like receptor subfamily A member 2 |
| LILRA2 | 11027 | 211100_x_at | Leukocyte immunoglobulin-like receptor subfamily A member 2 |
| LILRA2 | 11027 | 211101_x_at | Leukocyte immunoglobulin-like receptor subfamily A member 2 |
| LILRA2 | 11027 | 211102_s_at | Leukocyte immunoglobulin-like receptor subfamily A member 2 |
| LILRA3 | 11026 | 206881_s_at | Leukocyte immunoglobulin-like receptor subfamily A member 3 |
| LILRA4 | 23547 | 210313_at | Leukocyte immunoglobulin-like receptor subfamily A member 4 |
| LILRA5 | 353514 | 215838_at | Leukocyte immunoglobulin-like receptor subfamily A member 5 |
| LILRA5 | 353514 | 215839_at | Leukocyte immunoglobulin-like receptor subfamily A member 5 |
| LILRA6 | 79168 | 208594_x_at | Leukocyte immunoglobulin-like receptor subfamily A member 6 |
| LILRB1 | 10859 | 207104_x_at | Leukocyte immunoglobulin-like receptor subfamily B member 1 |
| LILRB1 | 10859 | 211336_x_at | Leukocyte immunoglobulin-like receptor subfamily B member 1 |
| LILRB1 | 10859 | 229937_x_at | Leukocyte immunoglobulin-like receptor subfamily B member 1 |
| LILRB2 | 10288 | 207697_x_at | Leukocyte immunoglobulin-like receptor subfamily B member 2 |
| LILRB2 | 10288 | 210146_x_at | Leukocyte immunoglobulin-like receptor subfamily B member 2 |
| LILRB3 | 11025 | 211135_x_at | Leukocyte immunoglobulin-like receptor subfamily B member 3 |
| LILRB4 | 11006 | 210152_at | Leukocyte immunoglobulin-like receptor subfamily B member 4 |
| LILRB5 | 10990 | 206856_at | Leukocyte immunoglobulin-like receptor subfamily B member 5 |

| | | | |
|--------|--------|-------------|---|
| LINGO1 | 84894 | 227933_at | Leucine-rich repeat and Ig-like domain-containing nogo receptor-interacting protein 1 |
| LINGO2 | 158038 | 232720_at | Leucine-rich repeat and Ig-like domain-containing nogo receptor-interacting protein 2 |
| LINGO3 | 645191 | 237405_at | Leucine-rich repeat and Ig-like domain-containing nogo receptor-interacting protein 3 |
| LPAR1 | 1902 | 204036_at | Lysophosphatidic acid receptor 1 |
| LPAR1 | 1902 | 204037_at | Lysophosphatidic acid receptor 1 |
| LPAR1 | 1902 | 204038_s_at | Lysophosphatidic acid receptor 1 |
| LPAR2 | 9170 | 206722_s_at | Lysophosphatidic acid receptor 2 |
| LPAR2 | 9170 | 206723_s_at | Lysophosphatidic acid receptor 2 |
| LPAR3 | 23566 | 220816_at | Lysophosphatidic acid receptor 3 |
| LPAR3 | 23566 | 231192_at | Lysophosphatidic acid receptor 3 |
| LPAR4 | 2846 | 206960_at | Lysophosphatidic acid receptor 4 |
| LPAR5 | 57121 | 230252_at | Lysophosphatidic acid receptor 5 |
| LPAR5 | 57121 | 231788_at | Lysophosphatidic acid receptor 5 |
| LPAR6 | 10161 | 218589_at | Lysophosphatidic acid receptor 6 |
| LRP1 | 4035 | 200784_s_at | Pro-low-density lipoprotein receptor-related protein 1 |
| LRP1 | 4035 | 200785_s_at | Pro-low-density lipoprotein receptor-related protein 1 |
| LRP10 | 26020 | 201412_at | Low-density lipoprotein receptor-related protein 10 |
| LRP10 | 26020 | 231861_at | Low-density lipoprotein receptor-related protein 10 |
| LRP11 | 84918 | 225060_at | Low-density lipoprotein receptor-related protein 11 |
| LRP12 | 29967 | 219631_at | Low-density lipoprotein receptor-related protein 12 |
| LRP12 | 29967 | 220253_s_at | Low-density lipoprotein receptor-related protein 12 |
| LRP12 | 29967 | 220254_at | Low-density lipoprotein receptor-related protein 12 |
| LRP1B | 53353 | 219643_at | Low-density lipoprotein receptor-related protein 1B |
| LRP2 | 4036 | 205710_at | Low-density lipoprotein receptor-related protein 2 |
| LRP2 | 4036 | 230863_at | Low-density lipoprotein receptor-related protein 2 |
| LRP3 | 4037 | 204381_at | Low-density lipoprotein receptor-related protein 3 |
| LRP3 | 4037 | 228525_at | Low-density lipoprotein receptor-related protein 3 |
| LRP4 | 4038 | 212850_s_at | Low-density lipoprotein receptor-related protein 4 |
| LRP5 | 4041 | 209468_at | Low-density lipoprotein receptor-related protein 5 |
| LRP5 | 4041 | 229591_at | Low-density lipoprotein receptor-related protein 5 |
| LRP5L | 91355 | 214873_at | Low-density lipoprotein receptor-related protein 5-like protein |
| LRP6 | 4040 | 205606_at | Low-density lipoprotein receptor-related protein 6 |
| LRP6 | 4040 | 225745_at | Low-density lipoprotein receptor-related protein 6 |
| LRP6 | 4040 | 34697_at | Low-density lipoprotein receptor-related protein 6 |
| LRP8 | 7804 | 205282_at | Low-density lipoprotein receptor-related protein 8 |
| LRP8 | 7804 | 208433_s_at | Low-density lipoprotein receptor-related protein 8 |
| LRPAP1 | 4043 | 201186_at | Alpha-2-macroglobulin receptor-associated protein |
| LSR | 51599 | 208190_s_at | Lipolysis-stimulated lipoprotein receptor |
| LTB4R | 1241 | 210128_s_at | Leukotriene B4 receptor 1 |
| LTB4R | 1241 | 216388_s_at | Leukotriene B4 receptor 1 |
| LTB4R | 1241 | 236172_at | Leukotriene B4 receptor 1 |
| LTB4R2 | 56413 | 220130_x_at | Leukotriene B4 receptor 2 |
| LTBR | 4055 | 203005_at | Tumor necrosis factor receptor superfamily member 3 |
| LTBR | 4055 | 232819_s_at | Tumor necrosis factor receptor superfamily member 3 |
| LTBR | 4055 | 243400_x_at | Tumor necrosis factor receptor superfamily member 3 |
| LTK | 4058 | 207106_s_at | Leukocyte tyrosine kinase receptor |
| LTK | 4058 | 217184_s_at | Leukocyte tyrosine kinase receptor |
| LYVE1 | 10894 | 219059_s_at | Lymphatic vessel endothelial hyaluronic acid receptor 1 |
| LYVE1 | 10894 | 220037_s_at | Lymphatic vessel endothelial hyaluronic acid receptor 1 |

| | | | |
|--------|--------|-------------|--|
| M6PR | 4074 | 200900_s_at | Cation-dependent mannose-6-phosphate receptor |
| M6PR | 4074 | 200901_s_at | Cation-dependent mannose-6-phosphate receptor |
| MARCO | 8685 | 205819_at | Macrophage receptor MARCO |
| MAS1L | 116511 | 234820_at | Mas-related G-protein coupled receptor MRG |
| MC1R | 4157 | 205458_at | Melanocyte-stimulating hormone receptor |
| MC2R | 4158 | 208568_at | Adrenocorticotrophic hormone receptor |
| MC2R | 4158 | 217425_at | Adrenocorticotrophic hormone receptor |
| MC2R | 4158 | 217434_at | Adrenocorticotrophic hormone receptor |
| MC3R | 4159 | 221442_at | Melanocortin receptor 3 |
| MC4R | 4160 | 221467_at | Melanocortin receptor 4 |
| MC5R | 4161 | 208565_at | Melanocortin receptor 5 |
| MCHR1 | 2847 | 221354_s_at | Melanin-concentrating hormone receptor 1 |
| MCHR1 | 2847 | 223855_s_at | Melanin-concentrating hormone receptor 1 |
| MCHR1 | 2847 | 230498_at | Melanin-concentrating hormone receptor 1 |
| MCHR2 | 84539 | 224408_at | Melanin-concentrating hormone receptor 2 |
| MET | 4233 | 203510_at | Hepatocyte growth factor receptor |
| MET | 4233 | 211599_x_at | Hepatocyte growth factor receptor |
| MET | 4233 | 213807_x_at | Hepatocyte growth factor receptor |
| MET | 4233 | 213816_s_at | Hepatocyte growth factor receptor |
| MLNR | 2862 | 221365_at | Motilin receptor |
| MPL | 4352 | 207550_at | Thrombopoietin receptor |
| MPL | 4352 | 211903_s_at | Thrombopoietin receptor |
| MPL | 4352 | 216825_s_at | Thrombopoietin receptor |
| MRAP2 | 112609 | 227226_at | Melanocortin-2 receptor accessory protein 2 |
| MRC2 | 9902 | 209280_at | C-type mannose receptor 2 |
| MRC2 | 9902 | 37408_at | C-type mannose receptor 2 |
| MRGPRF | 116535 | 227727_at | Mas-related G-protein coupled receptor member F |
| MS4A2 | 2206 | 207496_at | High affinity immunoglobulin epsilon receptor subunit beta |
| MS4A2 | 2206 | 207497_s_at | High affinity immunoglobulin epsilon receptor subunit beta |
| MSR1 | 4481 | 208422_at | Macrophage scavenger receptor types I and II |
| MSR1 | 4481 | 208423_s_at | Macrophage scavenger receptor types I and II |
| MSR1 | 4481 | 211887_x_at | Macrophage scavenger receptor types I and II |
| MSR1 | 4481 | 214770_at | Macrophage scavenger receptor types I and II |
| MST1R | 4486 | 205455_at | Macrophage-stimulating protein receptor |
| MTNR1A | 4543 | 221369_at | Melatonin receptor type 1A |
| MTNR1B | 4544 | 208516_at | Melatonin receptor type 1B |
| MUSK | 4593 | 207632_at | "Muscle, skeletal receptor tyrosine-protein kinase" |
| MUSK | 4593 | 207633_s_at | "Muscle, skeletal receptor tyrosine-protein kinase" |
| MUSK | 4593 | 241122_s_at | "Muscle, skeletal receptor tyrosine-protein kinase" |
| NARG2 | 79664 | 218713_at | NMDA receptor-regulated protein 2 |
| NARG2 | 79664 | 228960_at | NMDA receptor-regulated protein 2 |
| NARG2 | 79664 | 235189_at | NMDA receptor-regulated protein 2 |
| NARG2 | 79664 | 242639_at | NMDA receptor-regulated protein 2 |
| NCOA2 | 10499 | 205731_s_at | Nuclear receptor coactivator 2 |
| NCOA2 | 10499 | 205732_s_at | Nuclear receptor coactivator 2 |
| NCOA2 | 10499 | 215605_at | Nuclear receptor coactivator 2 |
| NCOA3 | 8202 | 207700_s_at | Nuclear receptor coactivator 3 |
| NCOA3 | 8202 | 209060_x_at | Nuclear receptor coactivator 3 |
| NCOA3 | 8202 | 209061_at | Nuclear receptor coactivator 3 |

| | | | |
|--------|--------|-------------|--|
| NCOA3 | 8202 | 209062_x_at | Nuclear receptor coactivator 3 |
| NCOA3 | 8202 | 211352_s_at | Nuclear receptor coactivator 3 |
| NCOA4 | 8031 | 210774_s_at | Nuclear receptor coactivator 4 |
| NCOA5 | 57727 | 225145_at | Nuclear receptor coactivator 5 |
| NCOA5 | 57727 | 234471_s_at | Nuclear receptor coactivator 5 |
| NCOA6 | 23054 | 208979_at | Nuclear receptor coactivator 6 |
| NCOA7 | 135112 | 225344_at | Nuclear receptor coactivator 7 |
| NCOA7 | 135112 | 243807_at | Nuclear receptor coactivator 7 |
| NCOR1 | 9611 | 200854_at | Nuclear receptor corepressor 1 |
| NCOR1 | 9611 | 200857_s_at | Nuclear receptor corepressor 1 |
| NCOR1 | 9611 | 234313_at | Nuclear receptor corepressor 1 |
| NCOR2 | 9612 | 207760_s_at | Nuclear receptor corepressor 2 |
| NCOR2 | 9612 | 208888_s_at | Nuclear receptor corepressor 2 |
| NCOR2 | 9612 | 208889_s_at | Nuclear receptor corepressor 2 |
| NCOR2 | 9612 | 215205_x_at | Nuclear receptor corepressor 2 |
| NCOR2 | 9612 | 236025_at | Nuclear receptor corepressor 2 |
| NCR1 | 9437 | 207860_at | Natural cytotoxicity triggering receptor 1 |
| NCR1 | 9437 | 217088_s_at | Natural cytotoxicity triggering receptor 1 |
| NCR1 | 9437 | 217095_x_at | Natural cytotoxicity triggering receptor 1 |
| NCR2 | 9436 | 217045_x_at | Natural cytotoxicity triggering receptor 2 |
| NCR2 | 9436 | 217493_x_at | Natural cytotoxicity triggering receptor 2 |
| NCR2 | 9436 | 221074_at | Natural cytotoxicity triggering receptor 2 |
| NCR2 | 9436 | 221075_s_at | Natural cytotoxicity triggering receptor 2 |
| NCR3 | 259197 | 210763_x_at | Natural cytotoxicity triggering receptor 3 |
| NCR3 | 259197 | 211010_s_at | Natural cytotoxicity triggering receptor 3 |
| NCR3 | 259197 | 211583_x_at | Natural cytotoxicity triggering receptor 3 |
| NGFR | 4804 | 205858_at | Tumor necrosis factor receptor superfamily member 16 |
| NMBR | 4829 | 207333_at | Neuromedin-B receptor |
| NMUR1 | 10316 | 221383_at | Neuromedin-U receptor 1 |
| NMUR2 | 56923 | 224088_at | Neuromedin-U receptor 2 |
| NPBWR1 | 2831 | 231752_at | Neuropeptides B/W receptor type 1 |
| NPBWR2 | 2832 | 221358_at | Neuropeptides B/W receptor type 2 |
| NPFFR1 | 64106 | 221387_at | Neuropeptide FF receptor 1 |
| NPFFR2 | 10886 | 224169_at | Neuropeptide FF receptor 2 |
| NPR1 | 4881 | 204648_at | Atrial natriuretic peptide receptor 1 |
| NPR1 | 4881 | 32625_at | Atrial natriuretic peptide receptor 1 |
| NPR2 | 4882 | 204310_s_at | Atrial natriuretic peptide receptor 2 |
| NPR2 | 4882 | 214066_x_at | Atrial natriuretic peptide receptor 2 |
| NPR3 | 4883 | 219789_at | Atrial natriuretic peptide receptor 3 |
| NPR3 | 4883 | 219790_s_at | Atrial natriuretic peptide receptor 3 |
| NPTXR | 23467 | 213040_s_at | Neuronal pentraxin receptor |
| NPTXR | 23467 | 217041_at | Neuronal pentraxin receptor |
| NPY1R | 4886 | 205440_s_at | Neuropeptide Y receptor type 1 |
| NPY2R | 4887 | 208379_x_at | Neuropeptide Y receptor type 2 |
| NPY2R | 4887 | 210729_at | Neuropeptide Y receptor type 2 |
| NPY2R | 4887 | 210730_s_at | Neuropeptide Y receptor type 2 |
| NPY5R | 4889 | 207400_at | Neuropeptide Y receptor type 5 |
| NPY6R | 4888 | 210444_at | Putative neuropeptide Y receptor type 6 |
| NPY6R | 4888 | 236860_at | Putative neuropeptide Y receptor type 6 |

| | | | |
|---------|--------|-------------|---|
| NR0B1 | 190 | 206644_at | Nuclear receptor subfamily 0 group B member 1 |
| NR0B1 | 190 | 206645_s_at | Nuclear receptor subfamily 0 group B member 1 |
| NR0B2 | 8431 | 206410_at | Nuclear receptor subfamily 0 group B member 2 |
| NR1D2 | 9975 | 209750_at | Nuclear receptor subfamily 1 group D member 2 |
| NR1D2 | 9975 | 225768_at | Nuclear receptor subfamily 1 group D member 2 |
| NR1H2 | 7376 | 218215_s_at | Oxysterols receptor LXR-beta |
| NR1H3 | 10062 | 203920_at | Oxysterols receptor LXR-alpha |
| NR1H4 | 9971 | 206340_at | Bile acid receptor |
| NR1H4 | 9971 | 243800_at | Bile acid receptor |
| NR1I2 | 8856 | 207202_s_at | Nuclear receptor subfamily 1 group I member 2 |
| NR1I2 | 8856 | 207203_s_at | Nuclear receptor subfamily 1 group I member 2 |
| NR1I3 | 9970 | 207007_at | Nuclear receptor subfamily 1 group I member 3 |
| NR2C1 | 7181 | 204791_at | Nuclear receptor subfamily 2 group C member 1 |
| NR2C1 | 7181 | 210530_s_at | Nuclear receptor subfamily 2 group C member 1 |
| NR2C1 | 7181 | 210531_at | Nuclear receptor subfamily 2 group C member 1 |
| NR2C1 | 7181 | 229956_at | Nuclear receptor subfamily 2 group C member 1 |
| NR2C2 | 7182 | 206038_s_at | Nuclear receptor subfamily 2 group C member 2 |
| NR2C2 | 7182 | 225477_s_at | Nuclear receptor subfamily 2 group C member 2 |
| NR2C2AP | 126382 | 226839_at | Nuclear receptor 2C2-associated protein |
| NR2E1 | 7101 | 207443_at | Nuclear receptor subfamily 2 group E member 1 |
| NR2E3 | 10002 | 208385_at | Photoreceptor-specific nuclear receptor |
| NR2E3 | 10002 | 208388_at | Photoreceptor-specific nuclear receptor |
| NR2F6 | 2063 | 209261_s_at | Nuclear receptor subfamily 2 group F member 6 |
| NR2F6 | 2063 | 209262_s_at | Nuclear receptor subfamily 2 group F member 6 |
| NR3C1 | 2908 | 201865_x_at | Glucocorticoid receptor |
| NR3C1 | 2908 | 201866_s_at | Glucocorticoid receptor |
| NR3C1 | 2908 | 211671_s_at | Glucocorticoid receptor |
| NR3C1 | 2908 | 216321_s_at | Glucocorticoid receptor |
| NR3C2 | 4306 | 205259_at | Mineralocorticoid receptor |
| NR4A1 | 3164 | 202340_x_at | Nuclear receptor subfamily 4 group A member 1 |
| NR4A1 | 3164 | 210226_at | Nuclear receptor subfamily 4 group A member 1 |
| NR4A1 | 3164 | 211143_x_at | Nuclear receptor subfamily 4 group A member 1 |
| NR4A2 | 4929 | 204621_s_at | Nuclear receptor subfamily 4 group A member 2 |
| NR4A2 | 4929 | 204622_x_at | Nuclear receptor subfamily 4 group A member 2 |
| NR4A2 | 4929 | 216248_s_at | Nuclear receptor subfamily 4 group A member 2 |
| NR4A3 | 8013 | 207978_s_at | Nuclear receptor subfamily 4 group A member 3 |
| NR4A3 | 8013 | 209959_at | Nuclear receptor subfamily 4 group A member 3 |
| NR4A3 | 8013 | 216979_at | Nuclear receptor subfamily 4 group A member 3 |
| NR5A2 | 2494 | 208337_s_at | Nuclear receptor subfamily 5 group A member 2 |
| NR5A2 | 2494 | 208343_s_at | Nuclear receptor subfamily 5 group A member 2 |
| NR5A2 | 2494 | 210174_at | Nuclear receptor subfamily 5 group A member 2 |
| NR6A1 | 2649 | 207742_s_at | Nuclear receptor subfamily 6 group A member 1 |
| NR6A1 | 2649 | 210391_at | Nuclear receptor subfamily 6 group A member 1 |
| NR6A1 | 2649 | 210392_x_at | Nuclear receptor subfamily 6 group A member 1 |
| NR6A1 | 2649 | 211402_x_at | Nuclear receptor subfamily 6 group A member 1 |
| NRBF2 | 29982 | 221803_s_at | Nuclear receptor-binding factor 2 |
| NRBF2 | 29982 | 223650_s_at | Nuclear receptor-binding factor 2 |
| NRBP1 | 29959 | 217765_at | Nuclear receptor-binding protein |
| NRBP2 | 340371 | 225949_at | Nuclear receptor-binding protein 2 |

| | | | |
|--------|--------|-------------|--|
| NRIP1 | 8204 | 202599_s_at | Nuclear receptor-interacting protein 1 |
| NRIP1 | 8204 | 202600_s_at | Nuclear receptor-interacting protein 1 |
| NRIP2 | 83714 | 215104_at | Nuclear receptor-interacting protein 2 |
| NRIP3 | 56675 | 219557_s_at | Nuclear receptor-interacting protein 3 |
| NRIP3 | 56675 | 222900_at | Nuclear receptor-interacting protein 3 |
| NTRK1 | 4914 | 208605_s_at | High affinity nerve growth factor receptor |
| NTRK2 | 4915 | 207152_at | BDNF/NT-3 growth factors receptor |
| NTRK2 | 4915 | 214680_at | BDNF/NT-3 growth factors receptor |
| NTRK2 | 4915 | 221795_at | BDNF/NT-3 growth factors receptor |
| NTRK2 | 4915 | 221796_at | BDNF/NT-3 growth factors receptor |
| NTRK2 | 4915 | 229463_at | BDNF/NT-3 growth factors receptor |
| NTRK2 | 4915 | 236095_at | BDNF/NT-3 growth factors receptor |
| NTRK3 | 4916 | 206462_s_at | NT-3 growth factor receptor |
| NTRK3 | 4916 | 213960_at | NT-3 growth factor receptor |
| NTRK3 | 4916 | 215025_at | NT-3 growth factor receptor |
| NTRK3 | 4916 | 215115_x_at | NT-3 growth factor receptor |
| NTRK3 | 4916 | 215311_at | NT-3 growth factor receptor |
| NTRK3 | 4916 | 217033_x_at | NT-3 growth factor receptor |
| NTRK3 | 4916 | 217377_x_at | NT-3 growth factor receptor |
| NTRK3 | 4916 | 228849_at | NT-3 growth factor receptor |
| NTSR1 | 4923 | 207360_s_at | Neurotensin receptor type 1 |
| NTSR2 | 23620 | 206899_at | Neurotensin receptor type 2 |
| NUS1 | 116150 | 225070_at | Nogo-B receptor |
| NUS1 | 116150 | 225071_at | Nogo-B receptor |
| OGFR | 11054 | 202841_x_at | Opioid growth factor receptor |
| OGFR | 11054 | 210443_x_at | Opioid growth factor receptor |
| OGFR | 11054 | 211512_s_at | Opioid growth factor receptor |
| OGFR | 11054 | 211513_s_at | Opioid growth factor receptor |
| OGFRL1 | 79627 | 219582_at | Opioid growth factor receptor-like protein 1 |
| OGFRL1 | 79627 | 226810_at | Opioid growth factor receptor-like protein 1 |
| OGFRL1 | 79627 | 238469_at | Opioid growth factor receptor-like protein 1 |
| OLR1 | 4973 | 210004_at | Oxidized low-density lipoprotein receptor 1 |
| OPRD1 | 4985 | 207792_at | Delta-type opioid receptor |
| OPRK1 | 4986 | 207553_at | Kappa-type opioid receptor |
| OPRK1 | 4986 | 229944_at | Kappa-type opioid receptor |
| OPRL1 | 4987 | 206563_s_at | Nociceptin receptor |
| OPRL1 | 4987 | 206564_at | Nociceptin receptor |
| OPRM1 | 4988 | 207989_at | Mu-type opioid receptor |
| OPRM1 | 4988 | 207994_s_at | Mu-type opioid receptor |
| OPRM1 | 4988 | 211359_s_at | Mu-type opioid receptor |
| OR10C1 | 442194 | 221339_at | Olfactory receptor 10C1 |
| OR10H1 | 26539 | 208558_at | Olfactory receptor 10H1 |
| OR10H2 | 26538 | 208543_at | Olfactory receptor 10H2 |
| OR10H3 | 26532 | 208520_at | Olfactory receptor 10H3 |
| OR10J1 | 26476 | 221346_at | Olfactory receptor 10J1 |
| OR11A1 | 26531 | 221343_at | Olfactory receptor 11A1 |
| OR12D2 | 26529 | 221344_at | Olfactory receptor 12D2 |
| OR12D3 | 81797 | 221431_s_at | Olfactory receptor 12D3 |
| OR14J1 | 442191 | 234545_at | Olfactory receptor 14J1 |

| | | | |
|--------|--------|-------------|---------------------------------|
| OR1A1 | 8383 | 221388_at | Olfactory receptor 1A1 |
| OR1A2 | 26189 | 221445_at | Olfactory receptor 1A2 |
| OR1D2 | 4991 | 221464_at | Olfactory receptor 1D2 |
| OR1E1 | 8387 | 214515_at | Olfactory receptor 1E1 |
| OR1F1 | 4992 | 221402_at | Olfactory receptor 1F1 |
| OR1F2P | 26184 | 217308_at | Putative olfactory receptor 1F2 |
| OR1G1 | 8390 | 221375_at | Olfactory receptor 1G1 |
| OR1I1 | 126370 | 234403_at | Olfactory receptor 1I1 |
| OR2A4 | 79541 | 233493_at | Olfactory receptor 2A4 |
| OR2B2 | 81697 | 216408_at | Olfactory receptor 2B2 |
| OR2B3 | 442184 | 234903_at | Putative olfactory receptor 2B3 |
| OR2B6 | 26212 | 216522_at | Olfactory receptor 2B6 |
| OR2C1 | 4993 | 221460_at | Olfactory receptor 2C1 |
| OR2F1 | 26211 | 208526_at | Olfactory receptor 2F1 |
| OR2F2 | 135948 | 217302_at | Olfactory receptor 2F2 |
| OR2H1 | 26716 | 216817_s_at | Olfactory receptor 2H1 |
| OR2H2 | 7932 | 208573_s_at | Olfactory receptor 2H2 |
| OR2H2 | 7932 | 217081_at | Olfactory receptor 2H2 |
| OR2J2 | 26707 | 208508_s_at | Olfactory receptor 2J2 |
| OR2J2 | 26707 | 216818_s_at | Olfactory receptor 2J2 |
| OR2J3 | 442186 | 217334_at | Olfactory receptor 2J3 |
| OR2S2 | 56656 | 221409_at | Olfactory receptor 2S2 |
| OR2W1 | 26692 | 221451_s_at | Olfactory receptor 2W1 |
| OR2W3 | 343171 | 241881_at | Olfactory receptor 2W3 |
| OR3A1 | 4994 | 221353_at | Olfactory receptor 3A1 |
| OR3A2 | 4995 | 221386_at | Olfactory receptor 3A2 |
| OR3A3 | 8392 | 221426_s_at | Olfactory receptor 3A3 |
| OR51B2 | 79345 | 234486_at | Olfactory receptor 51B2 |
| OR51B4 | 79339 | 234469_at | Olfactory receptor 51B4 |
| OR51B5 | 282763 | 234775_at | Olfactory receptor 51B5 |
| OR51B6 | 390058 | 234526_at | Olfactory receptor 51B6 |
| OR51E1 | 143503 | 229768_at | Olfactory receptor 51E1 |
| OR51E2 | 81285 | 221424_s_at | Olfactory receptor 51E2 |
| OR51E2 | 81285 | 232482_at | Olfactory receptor 51E2 |
| OR51E2 | 81285 | 236121_at | Olfactory receptor 51E2 |
| OR51I1 | 390063 | 234626_at | Olfactory receptor 51I1 |
| OR51I2 | 390064 | 234521_at | Olfactory receptor 51I2 |
| OR51J1 | 79470 | 233736_at | Olfactory receptor 51J1 |
| OR51M1 | 390059 | 234777_at | Olfactory receptor 51M1 |
| OR52A1 | 23538 | 221329_at | Olfactory receptor 52A1 |
| OR52D1 | 390066 | 234617_at | Olfactory receptor 52D1 |
| OR5I1 | 10798 | 208521_at | Olfactory receptor 5I1 |
| OR5V1 | 81696 | 234840_s_at | Olfactory receptor 5V1 |
| OR6A2 | 8590 | 221465_at | Olfactory receptor 6A2 |
| OR6B1 | 135946 | 234363_at | Olfactory receptor 6B1 |
| OR7A10 | 390892 | 217316_at | Olfactory receptor 7A10 |
| OR7A17 | 26333 | 208509_s_at | Olfactory receptor 7A17 |
| OR7A5 | 26659 | 208285_at | Olfactory receptor 7A5 |
| OR7C1 | 26664 | 216690_at | Olfactory receptor 7C1 |

| | | | |
|--------|--------|-------------|--|
| OR7C2 | 26658 | 208507_at | Olfactory receptor 7C2 |
| OR7E24 | 26648 | 215463_at | Olfactory receptor 7E24 |
| OR8D2 | 283160 | 234766_at | Olfactory receptor 8D2 |
| OSMR | 9180 | 205729_at | Oncostatin-M-specific receptor subunit beta |
| OXTR | 5021 | 206825_at | Oxytocin receptor |
| PAQR3 | 152559 | 213372_at | Progesterin and adipoQ receptor family member 3 |
| PAQR4 | 124222 | 212858_at | Progesterin and adipoQ receptor family member 4 |
| PAQR5 | 54852 | 220333_at | Membrane progesterin receptor gamma |
| PAQR5 | 54852 | 242871_at | Membrane progesterin receptor gamma |
| PAQR6 | 79957 | 219236_at | Progesterin and adipoQ receptor family member 6 |
| PAQR7 | 164091 | 242123_at | Membrane progesterin receptor alpha |
| PAQR8 | 85315 | 226423_at | Membrane progesterin receptor beta |
| PAQR8 | 85315 | 227626_at | Membrane progesterin receptor beta |
| PDGFRA | 5156 | 203131_at | Alpha-type platelet-derived growth factor receptor |
| PDGFRA | 5156 | 211533_at | Alpha-type platelet-derived growth factor receptor |
| PDGFRA | 5156 | 215305_at | Alpha-type platelet-derived growth factor receptor |
| PDGFRB | 5159 | 202273_at | Beta-type platelet-derived growth factor receptor |
| PDGFRL | 5157 | 205226_at | Platelet-derived growth factor receptor-like protein |
| PEAR1 | 375033 | 228618_at | Platelet endothelial aggregation receptor 1 |
| PEX5 | 5830 | 203244_at | Peroxisomal targeting signal 1 receptor |
| PEX5 | 5830 | 215481_s_at | Peroxisomal targeting signal 1 receptor |
| PEX7 | 5191 | 205420_at | Peroxisomal targeting signal 2 receptor |
| PEX7 | 5191 | 211033_s_at | Peroxisomal targeting signal 2 receptor |
| PGR | 5241 | 208305_at | Progesterone receptor |
| PGR | 5241 | 228554_at | Progesterone receptor |
| PGRMC1 | 10857 | 201120_s_at | Membrane-associated progesterone receptor component 1 |
| PGRMC1 | 10857 | 201121_s_at | Membrane-associated progesterone receptor component 1 |
| PGRMC2 | 10424 | 201701_s_at | Membrane-associated progesterone receptor component 2 |
| PGRMC2 | 10424 | 213227_at | Membrane-associated progesterone receptor component 2 |
| PIGR | 5284 | 204213_at | Polymeric immunoglobulin receptor |
| PIGR | 5284 | 226147_s_at | Polymeric immunoglobulin receptor |
| PIGR | 5284 | 229659_s_at | Polymeric immunoglobulin receptor |
| PILRA | 29992 | 219788_at | Paired immunoglobulin-like type 2 receptor alpha |
| PILRA | 29992 | 222218_s_at | Paired immunoglobulin-like type 2 receptor alpha |
| PILRB | 29990 | 220954_s_at | Paired immunoglobulin-like type 2 receptor beta |
| PILRB | 29990 | 225321_s_at | Paired immunoglobulin-like type 2 receptor beta |
| PKDREJ | 10343 | 220548_at | Polycystic kidney disease and receptor for egg jelly-related protein |
| PLA2R1 | 22925 | 207415_at | Secretory phospholipase A2 receptor |
| PLA2R1 | 22925 | 210194_at | Secretory phospholipase A2 receptor |
| PLA2R1 | 22925 | 235746_s_at | Secretory phospholipase A2 receptor |
| PLA2R1 | 22925 | 240039_at | Secretory phospholipase A2 receptor |
| PLAUR | 5329 | 210845_s_at | Urokinase plasminogen activator surface receptor |
| PLAUR | 5329 | 211924_s_at | Urokinase plasminogen activator surface receptor |
| PLAUR | 5329 | 214866_at | Urokinase plasminogen activator surface receptor |
| PNRC1 | 10957 | 209034_at | Proline-rich nuclear receptor coactivator 1 |
| PNRC2 | 55629 | 217779_s_at | Proline-rich nuclear receptor coactivator 2 |
| PPARA | 5465 | 206870_at | Peroxisome proliferator-activated receptor alpha |
| PPARA | 5465 | 210771_at | Peroxisome proliferator-activated receptor alpha |
| PPARA | 5465 | 223437_at | Peroxisome proliferator-activated receptor alpha |

| | | | |
|----------|--------|-------------|---|
| PPARA | 5465 | 223438_s_at | Peroxisome proliferator-activated receptor alpha |
| PPARA | 5465 | 226978_at | Peroxisome proliferator-activated receptor alpha |
| PPARA | 5465 | 237142_at | Peroxisome proliferator-activated receptor alpha |
| PPARA | 5465 | 244689_at | Peroxisome proliferator-activated receptor alpha |
| PPARD | 5467 | 208044_s_at | Peroxisome proliferator-activated receptor delta |
| PPARD | 5467 | 210636_at | Peroxisome proliferator-activated receptor delta |
| PPARD | 5467 | 242218_at | Peroxisome proliferator-activated receptor delta |
| PPARD | 5467 | 37152_at | Peroxisome proliferator-activated receptor delta |
| PPARG | 5468 | 208510_s_at | Peroxisome proliferator-activated receptor gamma |
| PPARGC1A | 10891 | 219195_at | Peroxisome proliferator-activated receptor gamma coactivator 1-alpha |
| PPRC1 | 23082 | 203737_s_at | Peroxisome proliferator-activated receptor gamma coactivator-related protein 1 |
| PPYR1 | 5540 | 210956_at | Neuropeptide Y receptor type 4 |
| PRIC285 | 85441 | 228230_at | Peroxisomal proliferator-activated receptor A-interacting complex 285 kDa protein |
| PRIC285 | 85441 | 232517_s_at | Peroxisomal proliferator-activated receptor A-interacting complex 285 kDa protein |
| PRIC285 | 85441 | 232518_at | Peroxisomal proliferator-activated receptor A-interacting complex 285 kDa protein |
| PRIC285 | 85441 | 232787_at | Peroxisomal proliferator-activated receptor A-interacting complex 285 kDa protein |
| PRLHR | 2834 | 231805_at | Prolactin-releasing peptide receptor |
| PRLR | 5618 | 206346_at | Prolactin receptor |
| PRLR | 5618 | 210476_s_at | Prolactin receptor |
| PRLR | 5618 | 211917_s_at | Prolactin receptor |
| PRLR | 5618 | 216638_s_at | Prolactin receptor |
| PRLR | 5618 | 227629_at | Prolactin receptor |
| PRLR | 5618 | 231981_at | Prolactin receptor |
| PRLR | 5618 | 243755_at | Prolactin receptor |
| PROCR | 10544 | 203650_at | Endothelial protein C receptor |
| PROKR2 | 128674 | 234450_at | Prokineticin receptor 2 |
| PTAFR | 5724 | 206278_at | Platelet-activating factor receptor |
| PTAFR | 5724 | 211661_x_at | Platelet-activating factor receptor |
| PTCRA | 171558 | 211252_x_at | Pre T-cell antigen receptor alpha |
| PTCRA | 171558 | 211837_s_at | Pre T-cell antigen receptor alpha |
| PTCRA | 171558 | 215492_x_at | Pre T-cell antigen receptor alpha |
| PTGDR | 5729 | 215894_at | Prostaglandin D2 receptor |
| PTGDR | 5729 | 215937_at | Prostaglandin D2 receptor |
| PTGDR | 5729 | 234165_at | Prostaglandin D2 receptor |
| PTGER1 | 5731 | 207650_x_at | Prostaglandin E2 receptor EP1 subtype |
| PTGER1 | 5731 | 214391_x_at | Prostaglandin E2 receptor EP1 subtype |
| PTGER1 | 5731 | 231201_at | Prostaglandin E2 receptor EP1 subtype |
| PTGER2 | 5732 | 206631_at | Prostaglandin E2 receptor EP2 subtype |
| PTGER3 | 5733 | 208169_s_at | Prostaglandin E2 receptor EP3 subtype |
| PTGER3 | 5733 | 210374_x_at | Prostaglandin E2 receptor EP3 subtype |
| PTGER3 | 5733 | 210375_at | Prostaglandin E2 receptor EP3 subtype |
| PTGER3 | 5733 | 210831_s_at | Prostaglandin E2 receptor EP3 subtype |
| PTGER3 | 5733 | 210832_x_at | Prostaglandin E2 receptor EP3 subtype |
| PTGER3 | 5733 | 210833_at | Prostaglandin E2 receptor EP3 subtype |
| PTGER3 | 5733 | 210834_s_at | Prostaglandin E2 receptor EP3 subtype |
| PTGER3 | 5733 | 211265_at | Prostaglandin E2 receptor EP3 subtype |
| PTGER3 | 5733 | 211909_x_at | Prostaglandin E2 receptor EP3 subtype |
| PTGER3 | 5733 | 213933_at | Prostaglandin E2 receptor EP3 subtype |
| PTGER4 | 5734 | 204897_at | Prostaglandin E2 receptor EP4 subtype |

| | | | |
|--------|-------|-------------|--|
| PTGFR | 5737 | 207177_at | Prostaglandin F2-alpha receptor |
| PTGFRN | 5738 | 224937_at | Prostaglandin F2 receptor negative regulator |
| PTGFRN | 5738 | 224950_at | Prostaglandin F2 receptor negative regulator |
| PTGIR | 5739 | 206187_at | Prostacyclin receptor |
| PTH1R | 5745 | 205911_at | Parathyroid hormone/parathyroid hormone-related peptide receptor |
| PTH2R | 5746 | 206772_at | Parathyroid hormone 2 receptor |
| PTPN1 | 5770 | 202716_at | Tyrosine-protein phosphatase non-receptor type 1 |
| PTPN1 | 5770 | 217686_at | Tyrosine-protein phosphatase non-receptor type 1 |
| PTPN1 | 5770 | 217689_at | Tyrosine-protein phosphatase non-receptor type 1 |
| PTPN1 | 5770 | 239526_x_at | Tyrosine-protein phosphatase non-receptor type 1 |
| PTPN11 | 5781 | 205867_at | Tyrosine-protein phosphatase non-receptor type 11 |
| PTPN11 | 5781 | 205868_s_at | Tyrosine-protein phosphatase non-receptor type 11 |
| PTPN11 | 5781 | 209895_at | Tyrosine-protein phosphatase non-receptor type 11 |
| PTPN11 | 5781 | 209896_s_at | Tyrosine-protein phosphatase non-receptor type 11 |
| PTPN11 | 5781 | 212610_at | Tyrosine-protein phosphatase non-receptor type 11 |
| PTPN12 | 5782 | 202006_at | Tyrosine-protein phosphatase non-receptor type 12 |
| PTPN12 | 5782 | 216884_at | Tyrosine-protein phosphatase non-receptor type 12 |
| PTPN12 | 5782 | 216915_s_at | Tyrosine-protein phosphatase non-receptor type 12 |
| PTPN13 | 5783 | 204201_s_at | Tyrosine-protein phosphatase non-receptor type 13 |
| PTPN13 | 5783 | 243792_x_at | Tyrosine-protein phosphatase non-receptor type 13 |
| PTPN14 | 5784 | 205503_at | Tyrosine-protein phosphatase non-receptor type 14 |
| PTPN18 | 26469 | 203555_at | Tyrosine-protein phosphatase non-receptor type 18 |
| PTPN18 | 26469 | 213521_at | Tyrosine-protein phosphatase non-receptor type 18 |
| PTPN2 | 5771 | 204935_at | Tyrosine-protein phosphatase non-receptor type 2 |
| PTPN2 | 5771 | 213136_at | Tyrosine-protein phosphatase non-receptor type 2 |
| PTPN2 | 5771 | 213137_s_at | Tyrosine-protein phosphatase non-receptor type 2 |
| PTPN2 | 5771 | 241622_at | Tyrosine-protein phosphatase non-receptor type 2 |
| PTPN2 | 5771 | 241623_at | Tyrosine-protein phosphatase non-receptor type 2 |
| PTPN2 | 5771 | 241983_at | Tyrosine-protein phosphatase non-receptor type 2 |
| PTPN21 | 11099 | 1320_at | Tyrosine-protein phosphatase non-receptor type 21 |
| PTPN21 | 11099 | 205438_at | Tyrosine-protein phosphatase non-receptor type 21 |
| PTPN21 | 11099 | 222092_at | Tyrosine-protein phosphatase non-receptor type 21 |
| PTPN21 | 11099 | 226380_at | Tyrosine-protein phosphatase non-receptor type 21 |
| PTPN21 | 11099 | 40524_at | Tyrosine-protein phosphatase non-receptor type 21 |
| PTPN22 | 26191 | 206060_s_at | Tyrosine-protein phosphatase non-receptor type 22 |
| PTPN22 | 26191 | 208010_s_at | Tyrosine-protein phosphatase non-receptor type 22 |
| PTPN22 | 26191 | 208011_at | Tyrosine-protein phosphatase non-receptor type 22 |
| PTPN22 | 26191 | 236539_at | Tyrosine-protein phosphatase non-receptor type 22 |
| PTPN23 | 25930 | 223149_s_at | Tyrosine-protein phosphatase non-receptor type 23 |
| PTPN23 | 25930 | 223150_s_at | Tyrosine-protein phosphatase non-receptor type 23 |
| PTPN3 | 5774 | 203997_at | Tyrosine-protein phosphatase non-receptor type 3 |
| PTPN3 | 5774 | 227944_at | Tyrosine-protein phosphatase non-receptor type 3 |
| PTPN4 | 5775 | 205171_at | Tyrosine-protein phosphatase non-receptor type 4 |
| PTPN5 | 84867 | 233470_at | Tyrosine-protein phosphatase non-receptor type 5 |
| PTPN5 | 84867 | 233471_at | Tyrosine-protein phosphatase non-receptor type 5 |
| PTPN5 | 84867 | 236456_at | Tyrosine-protein phosphatase non-receptor type 5 |
| PTPN6 | 5777 | 206687_s_at | Tyrosine-protein phosphatase non-receptor type 6 |
| PTPN7 | 5778 | 204852_s_at | Tyrosine-protein phosphatase non-receptor type 7 |
| PTPN9 | 5780 | 202958_at | Tyrosine-protein phosphatase non-receptor type 9 |

| | | | |
|---------|-------|-------------|---|
| PTPN9 | 5780 | 230140_at | Tyrosine-protein phosphatase non-receptor type 9 |
| PTPN9 | 5780 | 233226_at | Tyrosine-protein phosphatase non-receptor type 9 |
| PTPRA | 5786 | 213795_s_at | Receptor-type tyrosine-protein phosphatase alpha |
| PTPRA | 5786 | 213799_s_at | Receptor-type tyrosine-protein phosphatase alpha |
| PTPRA | 5786 | 233776_at | Receptor-type tyrosine-protein phosphatase alpha |
| PTPRA | 5786 | 239419_at | Receptor-type tyrosine-protein phosphatase alpha |
| PTPRA | 5786 | 240618_at | Receptor-type tyrosine-protein phosphatase alpha |
| PTPRB | 5787 | 205846_at | Receptor-type tyrosine-protein phosphatase beta |
| PTPRB | 5787 | 217177_s_at | Receptor-type tyrosine-protein phosphatase beta |
| PTPRB | 5787 | 230250_at | Receptor-type tyrosine-protein phosphatase beta |
| PTPRC | 5788 | 207238_s_at | Receptor-type tyrosine-protein phosphatase C |
| PTPRC | 5788 | 212587_s_at | Receptor-type tyrosine-protein phosphatase C |
| PTPRC | 5788 | 212588_at | Receptor-type tyrosine-protein phosphatase C |
| PTPRCAP | 5790 | 204960_at | Protein tyrosine phosphatase receptor type C-associated protein |
| PTPRD | 5789 | 205712_at | Receptor-type tyrosine-protein phosphatase delta |
| PTPRD | 5789 | 213362_at | Receptor-type tyrosine-protein phosphatase delta |
| PTPRD | 5789 | 214043_at | Receptor-type tyrosine-protein phosphatase delta |
| PTPRD | 5789 | 242493_at | Receptor-type tyrosine-protein phosphatase delta |
| PTPRE | 5791 | 221840_at | Receptor-type tyrosine-protein phosphatase epsilon |
| PTPRE | 5791 | 233978_at | Receptor-type tyrosine-protein phosphatase epsilon |
| PTPRF | 5792 | 200635_s_at | Receptor-type tyrosine-protein phosphatase F |
| PTPRF | 5792 | 200636_s_at | Receptor-type tyrosine-protein phosphatase F |
| PTPRF | 5792 | 200637_s_at | Receptor-type tyrosine-protein phosphatase F |
| PTPRF | 5792 | 215066_at | Receptor-type tyrosine-protein phosphatase F |
| PTPRG | 5793 | 204944_at | Receptor-type tyrosine-protein phosphatase gamma |
| PTPRG | 5793 | 244574_at | Receptor-type tyrosine-protein phosphatase gamma |
| PTPRH | 5794 | 208300_at | Receptor-type tyrosine-protein phosphatase H |
| PTPRJ | 5795 | 210173_at | Receptor-type tyrosine-protein phosphatase eta |
| PTPRJ | 5795 | 214137_at | Receptor-type tyrosine-protein phosphatase eta |
| PTPRJ | 5795 | 227396_at | Receptor-type tyrosine-protein phosphatase eta |
| PTPRK | 5796 | 203038_at | Receptor-type tyrosine-protein phosphatase kappa |
| PTPRK | 5796 | 233609_at | Receptor-type tyrosine-protein phosphatase kappa |
| PTPRM | 5797 | 203329_at | Receptor-type tyrosine-protein phosphatase mu |
| PTPRN | 5798 | 204945_at | Receptor-type tyrosine-protein phosphatase-like N |
| PTPRN2 | 5799 | 203029_s_at | Receptor-type tyrosine-protein phosphatase N2 |
| PTPRN2 | 5799 | 203030_s_at | Receptor-type tyrosine-protein phosphatase N2 |
| PTPRN2 | 5799 | 211534_x_at | Receptor-type tyrosine-protein phosphatase N2 |
| PTPRO | 5800 | 208121_s_at | Receptor-type tyrosine-protein phosphatase O |
| PTPRO | 5800 | 211600_at | Receptor-type tyrosine-protein phosphatase O |
| PTPRR | 5801 | 206084_at | Receptor-type tyrosine-protein phosphatase R |
| PTPRR | 5801 | 210675_s_at | Receptor-type tyrosine-protein phosphatase R |
| PTPRS | 5802 | 210823_s_at | Receptor-type tyrosine-protein phosphatase S |
| PTPRS | 5802 | 226571_s_at | Receptor-type tyrosine-protein phosphatase S |
| PTPRS | 5802 | 229465_s_at | Receptor-type tyrosine-protein phosphatase S |
| PTPRT | 11122 | 205948_at | Receptor-type tyrosine-protein phosphatase T |
| PTPRU | 10076 | 211320_s_at | Receptor-type tyrosine-protein phosphatase U |
| PTPRZ1 | 5803 | 204469_at | Receptor-type tyrosine-protein phosphatase zeta |
| PVR | 5817 | 212662_at | Poliovirus receptor |
| PVR | 5817 | 214443_at | Poliovirus receptor |

| | | | |
|---------|-----------|-------------|--|
| PVR | 5817 | 214444_s_at | Poliovirus receptor |
| PVR | 5817 | 216283_s_at | Poliovirus receptor |
| PVR | 5817 | 239918_at | Poliovirus receptor |
| PVR | 5817 | 32699_s_at | Poliovirus receptor |
| PVRL1 | 5818 | 208455_at | Poliovirus receptor-related protein 1 |
| PVRL1 | 5818 | 211845_at | Poliovirus receptor-related protein 1 |
| PVRL1 | 5818 | 211846_s_at | Poliovirus receptor-related protein 1 |
| PVRL1 | 5818 | 225211_at | Poliovirus receptor-related protein 1 |
| PVRL2 | 5819 | 203149_at | Poliovirus receptor-related protein 2 |
| PVRL2 | 5819 | 225418_at | Poliovirus receptor-related protein 2 |
| PVRL2 | 5819 | 232078_at | Poliovirus receptor-related protein 2 |
| PVRL2 | 5819 | 232079_s_at | Poliovirus receptor-related protein 2 |
| PVRL3 | 25945 | 213325_at | Poliovirus receptor-related protein 3 |
| PVRL4 | 81607 | 223540_at | Poliovirus receptor-related protein 4 |
| Q6ZNB5 | 100133315 | 232586_x_at | Putative short transient receptor potential channel 2-like protein |
| RAMP1 | 10267 | 204916_at | Receptor activity-modifying protein 1 |
| RAMP2 | 10266 | 205779_at | Receptor activity-modifying protein 2 |
| RAMP3 | 10268 | 205326_at | Receptor activity-modifying protein 3 |
| RAPSN | 5913 | 211570_s_at | 43 kDa receptor-associated protein of the synapse |
| RARA | 5914 | 203749_s_at | Retinoic acid receptor alpha |
| RARA | 5914 | 203750_s_at | Retinoic acid receptor alpha |
| RARA | 5914 | 211605_s_at | Retinoic acid receptor alpha |
| RARA | 5914 | 216300_x_at | Retinoic acid receptor alpha |
| RARB | 5915 | 205080_at | Retinoic acid receptor beta |
| RARB | 5915 | 208412_s_at | Retinoic acid receptor beta |
| RARB | 5915 | 208530_s_at | Retinoic acid receptor beta |
| RARB | 5915 | 217020_at | Retinoic acid receptor beta |
| RARG | 5916 | 204188_s_at | Retinoic acid receptor gamma |
| RARG | 5916 | 204189_at | Retinoic acid receptor gamma |
| RARG | 5916 | 217178_at | Retinoic acid receptor gamma |
| RARRES1 | 5918 | 206391_at | Retinoic acid receptor responder protein 1 |
| RARRES1 | 5918 | 206392_s_at | Retinoic acid receptor responder protein 1 |
| RARRES1 | 5918 | 221872_at | Retinoic acid receptor responder protein 1 |
| RARRES2 | 5919 | 209496_at | Retinoic acid receptor responder protein 2 |
| RARRES3 | 5920 | 204070_at | Retinoic acid receptor responder protein 3 |
| REEP1 | 65055 | 204364_s_at | Receptor expression-enhancing protein 1 |
| REEP1 | 65055 | 204365_s_at | Receptor expression-enhancing protein 1 |
| REEP2 | 51308 | 205331_s_at | Receptor expression-enhancing protein 2 |
| REEP3 | 221035 | 235016_at | Receptor expression-enhancing protein 3 |
| REEP4 | 80346 | 218777_at | Receptor expression-enhancing protein 4 |
| REEP5 | 7905 | 208872_s_at | Receptor expression-enhancing protein 5 |
| REEP5 | 7905 | 208873_s_at | Receptor expression-enhancing protein 5 |
| REEP6 | 92840 | 226597_at | Receptor expression-enhancing protein 6 |
| RELT | 84957 | 227060_at | Tumor necrosis factor receptor superfamily member 19L |
| RET | 5979 | 205879_x_at | Proto-oncogene tyrosine-protein kinase receptor Ret |
| RET | 5979 | 211421_s_at | Proto-oncogene tyrosine-protein kinase receptor Ret |
| RET | 5979 | 215771_x_at | Proto-oncogene tyrosine-protein kinase receptor Ret |
| RGR | 5995 | 207070_at | RPE-retinal G protein-coupled receptor |
| RIPK1 | 8737 | 209941_at | Receptor-interacting serine/threonine-protein kinase 1 |

| | | | |
|---------|--------|-------------|--|
| RIPK1 | 8737 | 226551_at | Receptor-interacting serine/threonine-protein kinase 1 |
| RIPK2 | 8767 | 209544_at | Receptor-interacting serine/threonine-protein kinase 2 |
| RIPK2 | 8767 | 209545_s_at | Receptor-interacting serine/threonine-protein kinase 2 |
| RIPK3 | 11035 | 228139_at | Receptor-interacting serine/threonine-protein kinase 3 |
| RIPK4 | 54101 | 221215_s_at | Receptor-interacting serine/threonine-protein kinase 4 |
| RIPK4 | 54101 | 234730_s_at | Receptor-interacting serine/threonine-protein kinase 4 |
| ROR1 | 4919 | 205805_s_at | Tyrosine-protein kinase transmembrane receptor ROR1 |
| ROR1 | 4919 | 211057_at | Tyrosine-protein kinase transmembrane receptor ROR1 |
| ROR1 | 4919 | 232060_at | Tyrosine-protein kinase transmembrane receptor ROR1 |
| ROR2 | 4920 | 205578_at | Tyrosine-protein kinase transmembrane receptor ROR2 |
| ROR2 | 4920 | 231000_at | Tyrosine-protein kinase transmembrane receptor ROR2 |
| RORA | 6095 | 210426_x_at | Nuclear receptor ROR-alpha |
| RORA | 6095 | 210479_s_at | Nuclear receptor ROR-alpha |
| RORA | 6095 | 226682_at | Nuclear receptor ROR-alpha |
| RORA | 6095 | 235567_at | Nuclear receptor ROR-alpha |
| RORA | 6095 | 236266_at | Nuclear receptor ROR-alpha |
| RORA | 6095 | 239550_at | Nuclear receptor ROR-alpha |
| RORA | 6095 | 240163_at | Nuclear receptor ROR-alpha |
| RORA | 6095 | 240951_at | Nuclear receptor ROR-alpha |
| RORA | 6095 | 241760_x_at | Nuclear receptor ROR-alpha |
| RORB | 6096 | 206443_at | Nuclear receptor ROR-beta |
| RORB | 6096 | 242385_at | Nuclear receptor ROR-beta |
| RORC | 6097 | 206419_at | Nuclear receptor ROR-gamma |
| RORC | 6097 | 228806_at | Nuclear receptor ROR-gamma |
| RRH | 10692 | 208314_at | Visual pigment-like receptor purposing |
| RTN4R | 65078 | 228550_at | Reticulon-4 receptor |
| RTN4RL1 | 146760 | 230700_at | Reticulon-4 receptor-like 1 |
| RTN4RL2 | 349667 | 229345_at | Reticulon-4 receptor-like 2 |
| RTP4 | 64108 | 219684_at | Receptor-transporting protein 4 |
| RXFP1 | 59350 | 231804_at | Relaxin receptor 1 |
| RXFP1 | 59350 | 238206_at | Relaxin receptor 1 |
| RXFP3 | 51289 | 221066_at | Relaxin-3 receptor 1 |
| RXRA | 6256 | 202426_s_at | Retinoic acid receptor RXR-alpha |
| RXRA | 6256 | 202449_s_at | Retinoic acid receptor RXR-alpha |
| RXRB | 6257 | 209148_at | Retinoic acid receptor RXR-beta |
| RXRB | 6257 | 215098_at | Retinoic acid receptor RXR-beta |
| RXRB | 6257 | 215099_s_at | Retinoic acid receptor RXR-beta |
| RXRG | 6258 | 205954_at | Retinoic acid receptor RXR-gamma |
| RYR1 | 6261 | 205485_at | Ryanodine receptor 1 |
| RYR2 | 6262 | 207557_s_at | Ryanodine receptor 2 |
| RYR2 | 6262 | 214044_at | Ryanodine receptor 2 |
| RYR3 | 6263 | 206306_at | Ryanodine receptor 3 |
| S1PR1 | 1901 | 204642_at | Sphingosine 1-phosphate receptor 1 |
| S1PR1 | 1901 | 239401_at | Sphingosine 1-phosphate receptor 1 |
| S1PR2 | 9294 | 208537_at | Sphingosine 1-phosphate receptor 2 |
| S1PR2 | 9294 | 227684_at | Sphingosine 1-phosphate receptor 2 |
| S1PR3 | 1903 | 231741_at | Sphingosine 1-phosphate receptor 3 |
| S1PR4 | 8698 | 206437_at | Sphingosine 1-phosphate receptor 4 |
| S1PR5 | 53637 | 221417_x_at | Sphingosine 1-phosphate receptor 5 |

| | | | |
|---------|--------|-------------|--|
| S1PR5 | 53637 | 230464_at | Sphingosine 1-phosphate receptor 5 |
| S1PR5 | 53637 | 233743_x_at | Sphingosine 1-phosphate receptor 5 |
| SCARA3 | 51435 | 219416_at | Scavenger receptor class A member 3 |
| SCARA3 | 51435 | 223842_s_at | Scavenger receptor class A member 3 |
| SCARA3 | 51435 | 223843_at | Scavenger receptor class A member 3 |
| SCARA5 | 286133 | 229839_at | Scavenger receptor class A member 5 |
| SCARA5 | 286133 | 235849_at | Scavenger receptor class A member 5 |
| SCARB1 | 949 | 201819_at | Scavenger receptor class B member 1 |
| SCARB1 | 949 | 215834_x_at | Scavenger receptor class B member 1 |
| SCARB1 | 949 | 232421_at | Scavenger receptor class B member 1 |
| SCARF1 | 8578 | 206995_x_at | Endothelial cells scavenger receptor |
| SCARF2 | 91179 | 227557_at | Scavenger receptor class F member 2 |
| SCARF2 | 91179 | 241691_at | Scavenger receptor class F member 2 |
| SCTR | 6344 | 210382_at | Secretin receptor |
| SIGIRR | 59307 | 218921_at | Single Ig IL-1-related receptor |
| SIGMAR1 | 10280 | 201692_at | Sigma non-opioid intracellular receptor 1 |
| SIGMAR1 | 10280 | 214484_s_at | Sigma non-opioid intracellular receptor 1 |
| SIRPA | 140885 | 202895_s_at | Tyrosine-protein phosphatase non-receptor type substrate 1 |
| SIRPA | 140885 | 202896_s_at | Tyrosine-protein phosphatase non-receptor type substrate 1 |
| SIRPA | 140885 | 202897_at | Tyrosine-protein phosphatase non-receptor type substrate 1 |
| SIRPA | 140885 | 217024_x_at | Tyrosine-protein phosphatase non-receptor type substrate 1 |
| SORCS1 | 114815 | 228194_s_at | VPS10 domain-containing receptor SorCS1 |
| SORCS2 | 57537 | 228720_at | VPS10 domain-containing receptor SorCS2 |
| SORCS3 | 22986 | 215522_at | VPS10 domain-containing receptor SorCS3 |
| SORL1 | 6653 | 203509_at | Sortilin-related receptor |
| SORL1 | 6653 | 212560_at | Sortilin-related receptor |
| SORL1 | 6653 | 230707_at | Sortilin-related receptor |
| SRA1 | 10011 | 224130_s_at | Steroid receptor RNA activator 1 |
| SRA1 | 10011 | 224864_at | Steroid receptor RNA activator 1 |
| SRCRB4D | 136853 | 236529_at | Scavenger receptor cysteine-rich domain-containing group B protein |
| SRPR | 6734 | 200917_s_at | Signal recognition particle receptor subunit alpha |
| SRPR | 6734 | 200918_s_at | Signal recognition particle receptor subunit alpha |
| SRPRB | 58477 | 218140_x_at | Signal recognition particle receptor subunit beta |
| SRPRB | 58477 | 222532_at | Signal recognition particle receptor subunit beta |
| SRPRB | 58477 | 227737_at | Signal recognition particle receptor subunit beta |
| SSTR1 | 6751 | 208482_at | Somatostatin receptor type 1 |
| SSTR1 | 6751 | 235591_at | Somatostatin receptor type 1 |
| SSTR2 | 6752 | 214597_at | Somatostatin receptor type 2 |
| SSTR2 | 6752 | 217455_s_at | Somatostatin receptor type 2 |
| SSTR2 | 6752 | 239031_at | Somatostatin receptor type 2 |
| SSTR3 | 6753 | 214491_at | Somatostatin receptor type 3 |
| SSTR4 | 6754 | 214556_at | Somatostatin receptor type 4 |
| SSTR5 | 6755 | 214555_at | Somatostatin receptor type 5 |
| STRAP | 11171 | 200870_at | Serine-threonine kinase receptor-associated protein |
| SUCNR1 | 56670 | 223939_at | Succinate receptor 1 |
| TAAR2 | 9287 | 221394_at | Trace amine-associated receptor 2 |
| TAAR3 | 9288 | 221393_at | Putative trace amine-associated receptor 3 |
| TAAR5 | 9038 | 221459_at | Trace amine-associated receptor 5 |
| TACR1 | 6869 | 208048_at | Substance-P receptor |

| | | | |
|----------|--------|-------------|---|
| TACR1 | 6869 | 208049_s_at | Substance-P receptor |
| TACR1 | 6869 | 210637_at | Substance-P receptor |
| TACR1 | 6869 | 230908_at | Substance-P receptor |
| TACR2 | 6865 | 214348_at | Substance-K receptor |
| TACR3 | 6870 | 208183_at | Neuromedin-K receptor |
| TAS2R1 | 50834 | 221324_at | Taste receptor type 2 member 1 |
| TAS2R10 | 50839 | 221397_at | Taste receptor type 2 member 10 |
| TAS2R13 | 50838 | 221395_at | Taste receptor type 2 member 13 |
| TAS2R14 | 50840 | 221391_at | Taste receptor type 2 member 14 |
| TAS2R16 | 50833 | 221444_at | Taste receptor type 2 member 16 |
| TAS2R3 | 50831 | 221456_at | Taste receptor type 2 member 3 |
| TAS2R4 | 50832 | 221392_at | Taste receptor type 2 member 4 |
| TAS2R45 | 259291 | 234042_at | Taste receptor type 2 member 45 |
| TAS2R45 | 259291 | 234108_at | Taste receptor type 2 member 45 |
| TAS2R5 | 54429 | 231757_at | Taste receptor type 2 member 5 |
| TAS2R7 | 50837 | 221396_at | Taste receptor type 2 member 7 |
| TAS2R8 | 50836 | 221398_at | Taste receptor type 2 member 8 |
| TAS2R9 | 50835 | 221461_at | Taste receptor type 2 member 9 |
| TBXA2R | 6915 | 207554_x_at | Thromboxane A2 receptor |
| TBXA2R | 6915 | 207555_s_at | Thromboxane A2 receptor |
| TBXA2R | 6915 | 211590_x_at | Thromboxane A2 receptor |
| TBXA2R | 6915 | 336_at | Thromboxane A2 receptor |
| TCRA | 6955 | 215540_at | T-cell receptor alpha chain V region CTL-L17 |
| TCRA | 6955 | 217412_at | T-cell receptor alpha chain V region CTL-L17 |
| TCRA | 6955 | 234849_at | T-cell receptor alpha chain V region CTL-L17 |
| TEK | 7010 | 206702_at | Angiopoietin-1 receptor |
| TEK | 7010 | 217711_at | Angiopoietin-1 receptor |
| TFR2 | 7036 | 207883_s_at | Transferrin receptor protein 2 |
| TFR2 | 7036 | 210215_at | Transferrin receptor protein 2 |
| TFR2 | 7036 | 215863_at | Transferrin receptor protein 2 |
| TFRC | 7037 | 207332_s_at | Transferrin receptor protein 1 |
| TFRC | 7037 | 208691_at | Transferrin receptor protein 1 |
| TFRC | 7037 | 237214_at | Transferrin receptor protein 1 |
| TFRC | 7037 | 237215_s_at | Transferrin receptor protein 1 |
| TFRC | 7037 | 240686_x_at | Transferrin receptor protein 1 |
| TGFBR1 | 7046 | 206943_at | TGF-beta receptor type-1 |
| TGFBR1 | 7046 | 224793_s_at | TGF-beta receptor type-1 |
| TGFBR1 | 7046 | 236561_at | TGF-beta receptor type-1 |
| TGFBR2 | 7048 | 207334_s_at | TGF-beta receptor type-2 |
| TGFBR2 | 7048 | 208944_at | TGF-beta receptor type-2 |
| TGFBR3 | 7049 | 204731_at | Transforming growth factor beta receptor type 3 |
| TGFBR3 | 7049 | 226625_at | Transforming growth factor beta receptor type 3 |
| TGFBRAP1 | 9392 | 205210_at | Transforming growth factor-beta receptor-associated protein 1 |
| THRA | 7067 | 1316_at | Thyroid hormone receptor alpha |
| THRA | 7067 | 204100_at | Thyroid hormone receptor alpha |
| THRA | 7067 | 214883_at | Thyroid hormone receptor alpha |
| THRA | 7067 | 35846_at | Thyroid hormone receptor alpha |
| THRAP3 | 9967 | 217847_s_at | Thyroid hormone receptor-associated protein 3 |
| THRAP3 | 9967 | 222439_s_at | Thyroid hormone receptor-associated protein 3 |

| | | | |
|-----------|--------|-------------|---|
| THRAP3 | 9967 | 222440_s_at | Thyroid hormone receptor-associated protein 3 |
| THRAP3 | 9967 | 242163_at | Thyroid hormone receptor-associated protein 3 |
| THRB | 7068 | 207044_at | Thyroid hormone receptor beta |
| THRB | 7068 | 228716_at | Thyroid hormone receptor beta |
| THRB | 7068 | 229657_at | Thyroid hormone receptor beta |
| TIE1 | 7075 | 204468_s_at | Tyrosine-protein kinase receptor Tie-1 |
| TIGIT | 201633 | 240070_at | T cell immunoreceptor with Ig and ITIM domains |
| TIRAP | 114609 | 239796_x_at | Toll/interleukin-1 receptor domain-containing adapter protein |
| TLR1 | 7096 | 210176_at | Toll-like receptor 1 |
| TLR10 | 81793 | 223750_s_at | Toll-like receptor 10 |
| TLR10 | 81793 | 223751_x_at | Toll-like receptor 10 |
| TLR2 | 7097 | 204924_at | Toll-like receptor 2 |
| TLR3 | 7098 | 206271_at | Toll-like receptor 3 |
| TLR4 | 7099 | 221060_s_at | Toll-like receptor 4 |
| TLR4 | 7099 | 224341_x_at | Toll-like receptor 4 |
| TLR4 | 7099 | 232068_s_at | Toll-like receptor 4 |
| TLR5 | 7100 | 210166_at | Toll-like receptor 5 |
| TLR6 | 10333 | 207446_at | Toll-like receptor 6 |
| TLR6 | 10333 | 239021_at | Toll-like receptor 6 |
| TLR7 | 51284 | 220146_at | Toll-like receptor 7 |
| TLR7 | 51284 | 222952_s_at | Toll-like receptor 7 |
| TLR8 | 51311 | 220832_at | Toll-like receptor 8 |
| TLR8 | 51311 | 229560_at | Toll-like receptor 8 |
| TLR9 | 54106 | 223903_at | Toll-like receptor 9 |
| TNFRSF10A | 8797 | 231775_at | Tumor necrosis factor receptor superfamily member 10A |
| TNFRSF10B | 8795 | 209294_x_at | Tumor necrosis factor receptor superfamily member 10B |
| TNFRSF10B | 8795 | 209295_at | Tumor necrosis factor receptor superfamily member 10B |
| TNFRSF10B | 8795 | 210405_x_at | Tumor necrosis factor receptor superfamily member 10B |
| TNFRSF10C | 8794 | 206222_at | Tumor necrosis factor receptor superfamily member 10C |
| TNFRSF10C | 8794 | 211163_s_at | Tumor necrosis factor receptor superfamily member 10C |
| TNFRSF10C | 8794 | 234195_at | Tumor necrosis factor receptor superfamily member 10C |
| TNFRSF10C | 8794 | 234644_x_at | Tumor necrosis factor receptor superfamily member 10C |
| TNFRSF10D | 8793 | 210654_at | Tumor necrosis factor receptor superfamily member 10D |
| TNFRSF10D | 8793 | 227345_at | Tumor necrosis factor receptor superfamily member 10D |
| TNFRSF11A | 8792 | 207037_at | Tumor necrosis factor receptor superfamily member 11A |
| TNFRSF11A | 8792 | 238846_at | Tumor necrosis factor receptor superfamily member 11A |
| TNFRSF11B | 4982 | 204932_at | Tumor necrosis factor receptor superfamily member 11B |
| TNFRSF11B | 4982 | 204933_s_at | Tumor necrosis factor receptor superfamily member 11B |
| TNFRSF12A | 51330 | 218368_s_at | Tumor necrosis factor receptor superfamily member 12A |
| TNFRSF13B | 23495 | 207641_at | Tumor necrosis factor receptor superfamily member 13B |
| TNFRSF14 | 8764 | 209354_at | Tumor necrosis factor receptor superfamily member 14 |
| TNFRSF17 | 608 | 206641_at | Tumor necrosis factor receptor superfamily member 17 |
| TNFRSF18 | 8784 | 223851_s_at | Tumor necrosis factor receptor superfamily member 18 |
| TNFRSF18 | 8784 | 224553_s_at | Tumor necrosis factor receptor superfamily member 18 |
| TNFRSF19 | 55504 | 223827_at | Tumor necrosis factor receptor superfamily member 19 |
| TNFRSF19 | 55504 | 224090_s_at | Tumor necrosis factor receptor superfamily member 19 |
| TNFRSF19 | 55504 | 227812_at | Tumor necrosis factor receptor superfamily member 19 |
| TNFRSF1A | 7132 | 207643_s_at | Tumor necrosis factor receptor superfamily member 1A |
| TNFRSF1B | 7133 | 203508_at | Tumor necrosis factor receptor superfamily member 1B |

| | | | |
|----------|--------|-------------|---|
| TNFRSF21 | 27242 | 214581_x_at | Tumor necrosis factor receptor superfamily member 21 |
| TNFRSF21 | 27242 | 218856_at | Tumor necrosis factor receptor superfamily member 21 |
| TNFRSF25 | 8718 | 210847_x_at | Tumor necrosis factor receptor superfamily member 25 |
| TNFRSF25 | 8718 | 211282_x_at | Tumor necrosis factor receptor superfamily member 25 |
| TNFRSF25 | 8718 | 211841_s_at | Tumor necrosis factor receptor superfamily member 25 |
| TNFRSF25 | 8718 | 216042_at | Tumor necrosis factor receptor superfamily member 25 |
| TNFRSF25 | 8718 | 219423_x_at | Tumor necrosis factor receptor superfamily member 25 |
| TNFRSF4 | 7293 | 208023_at | Tumor necrosis factor receptor superfamily member 4 |
| TNFRSF4 | 7293 | 214228_x_at | Tumor necrosis factor receptor superfamily member 4 |
| TNFRSF8 | 943 | 206729_at | Tumor necrosis factor receptor superfamily member 8 |
| TNFRSF9 | 3604 | 207536_s_at | Tumor necrosis factor receptor superfamily member 9 |
| TNFRSF9 | 3604 | 211786_at | Tumor necrosis factor receptor superfamily member 9 |
| TNK1 | 8711 | 205793_x_at | Non-receptor tyrosine-protein kinase TNK1 |
| TNK1 | 8711 | 217149_x_at | Non-receptor tyrosine-protein kinase TNK1 |
| TOMM20 | 9804 | 200662_s_at | Mitochondrial import receptor subunit TOM20 homolog |
| TOMM20 | 9804 | 212773_s_at | Mitochondrial import receptor subunit TOM20 homolog |
| TOMM22 | 56993 | 217960_s_at | Mitochondrial import receptor subunit TOM22 homolog |
| TOMM22 | 56993 | 222474_s_at | Mitochondrial import receptor subunit TOM22 homolog |
| TOMM22 | 56993 | 229076_s_at | Mitochondrial import receptor subunit TOM22 homolog |
| TOMM34 | 10953 | 201870_at | Mitochondrial import receptor subunit TOM34 |
| TOMM40 | 10452 | 202264_s_at | Mitochondrial import receptor subunit TOM40 homolog |
| TOMM40L | 84134 | 226059_at | Mitochondrial import receptor subunit TOM40B |
| TOMM5 | 401505 | 225036_at | Mitochondrial import receptor subunit TOM5 homolog |
| TOMM5 | 401505 | 228053_s_at | Mitochondrial import receptor subunit TOM5 homolog |
| TOMM70A | 9868 | 201512_s_at | Mitochondrial import receptor subunit TOM70 |
| TOMM70A | 9868 | 201519_at | Mitochondrial import receptor subunit TOM70 |
| TRAC | 28755 | 209670_at | T-cell receptor alpha chain C region |
| TRADD | 8717 | 1729_at | Tumor necrosis factor receptor type 1-associated DEATH domain protein |
| TRADD | 8717 | 205641_s_at | Tumor necrosis factor receptor type 1-associated DEATH domain protein |
| TRADD | 8717 | 213443_at | Tumor necrosis factor receptor type 1-associated DEATH domain protein |
| TRAF1 | 7185 | 205599_at | TNF receptor-associated factor 1 |
| TRAF1 | 7185 | 235116_at | TNF receptor-associated factor 1 |
| TRAF2 | 7186 | 204413_at | TNF receptor-associated factor 2 |
| TRAF3 | 7187 | 208315_x_at | TNF receptor-associated factor 3 |
| TRAF3 | 7187 | 221571_at | TNF receptor-associated factor 3 |
| TRAF4 | 9618 | 202871_at | TNF receptor-associated factor 4 |
| TRAF4 | 9618 | 211899_s_at | TNF receptor-associated factor 4 |
| TRAF4 | 9618 | 235688_s_at | TNF receptor-associated factor 4 |
| TRAF4 | 9618 | 242473_at | TNF receptor-associated factor 4 |
| TRAF5 | 7188 | 204352_at | TNF receptor-associated factor 5 |
| TRAF6 | 7189 | 205558_at | TNF receptor-associated factor 6 |
| TRAT1 | 50852 | 217147_s_at | T-cell receptor-associated transmembrane adapter 1 |
| TREM1 | 54210 | 219434_at | Triggering receptor expressed on myeloid cells 1 |
| TREM2 | 54209 | 219725_at | Triggering receptor expressed on myeloid cells 2 |
| TRHR | 7201 | 211438_at | Thyrotropin-releasing hormone receptor |
| TRIP11 | 9321 | 209778_at | Thyroid receptor-interacting protein 11 |
| TRIP11 | 9321 | 210760_x_at | Thyroid receptor-interacting protein 11 |
| TRIP11 | 9321 | 235973_at | Thyroid receptor-interacting protein 11 |
| TRIP11 | 9321 | 236160_at | Thyroid receptor-interacting protein 11 |

| | | | |
|---------|--------|-------------|--|
| TRIP13 | 9319 | 204033_at | Thyroid receptor-interacting protein 13 |
| TRIP6 | 7205 | 209129_at | Thyroid receptor-interacting protein 6 |
| TRIP6 | 7205 | 214262_at | Thyroid receptor-interacting protein 6 |
| TRPA1 | 8989 | 208349_at | Transient receptor potential cation channel subfamily A member 1 |
| TRPA1 | 8989 | 217590_s_at | Transient receptor potential cation channel subfamily A member 1 |
| TRPC1 | 7220 | 205802_at | Short transient receptor potential channel 1 |
| TRPC1 | 7220 | 205803_s_at | Short transient receptor potential channel 1 |
| TRPC1 | 7220 | 211602_s_at | Short transient receptor potential channel 1 |
| TRPC3 | 7222 | 206425_s_at | Short transient receptor potential channel 3 |
| TRPC3 | 7222 | 210814_at | Short transient receptor potential channel 3 |
| TRPC4 | 7223 | 220817_at | Short transient receptor potential channel 4 |
| TRPC4 | 7223 | 220818_s_at | Short transient receptor potential channel 4 |
| TRPC4 | 7223 | 224219_s_at | Short transient receptor potential channel 4 |
| TRPC4 | 7223 | 224220_x_at | Short transient receptor potential channel 4 |
| TRPC4AP | 26133 | 212059_s_at | Short transient receptor potential channel 4-associated protein |
| TRPC5 | 7224 | 220552_at | Short transient receptor potential channel 5 |
| TRPC6 | 7225 | 206528_at | Short transient receptor potential channel 6 |
| TRPC6 | 7225 | 217287_s_at | Short transient receptor potential channel 6 |
| TRPC7 | 57113 | 208589_at | Short transient receptor potential channel 7 |
| TRPC7 | 57113 | 234407_s_at | Short transient receptor potential channel 7 |
| TRPM1 | 4308 | 206479_at | Transient receptor potential cation channel subfamily M member 1 |
| TRPM1 | 4308 | 214410_at | Transient receptor potential cation channel subfamily M member 1 |
| TRPM1 | 4308 | 237069_s_at | Transient receptor potential cation channel subfamily M member 1 |
| TRPM1 | 4308 | 237070_at | Transient receptor potential cation channel subfamily M member 1 |
| TRPM1 | 4308 | 240386_at | Transient receptor potential cation channel subfamily M member 1 |
| TRPM2 | 7226 | 205708_s_at | Transient receptor potential cation channel subfamily M member 2 |
| TRPM3 | 80036 | 211422_at | Transient receptor potential cation channel subfamily M member 3 |
| TRPM3 | 80036 | 216452_at | Transient receptor potential cation channel subfamily M member 3 |
| TRPM3 | 80036 | 216489_at | Transient receptor potential cation channel subfamily M member 3 |
| TRPM3 | 80036 | 220463_at | Transient receptor potential cation channel subfamily M member 3 |
| TRPM3 | 80036 | 233022_at | Transient receptor potential cation channel subfamily M member 3 |
| TRPM4 | 54795 | 219360_s_at | Transient receptor potential cation channel subfamily M member 4 |
| TRPM5 | 29850 | 223935_at | Transient receptor potential cation channel subfamily M member 5 |
| TRPM6 | 140803 | 221102_s_at | Transient receptor potential cation channel subfamily M member 6 |
| TRPM6 | 140803 | 224412_s_at | Transient receptor potential cation channel subfamily M member 6 |
| TRPM6 | 140803 | 234864_s_at | Transient receptor potential cation channel subfamily M member 6 |
| TRPM6 | 140803 | 240389_at | Transient receptor potential cation channel subfamily M member 6 |
| TRPM7 | 54822 | 223323_x_at | Transient receptor potential cation channel subfamily M member 7 |
| TRPM7 | 54822 | 223324_s_at | Transient receptor potential cation channel subfamily M member 7 |
| TRPM7 | 54822 | 231689_at | Transient receptor potential cation channel subfamily M member 7 |
| TRPM7 | 54822 | 237884_x_at | Transient receptor potential cation channel subfamily M member 7 |
| TRPM8 | 79054 | 220226_at | Transient receptor potential cation channel subfamily M member 8 |
| TRPM8 | 79054 | 243483_at | Transient receptor potential cation channel subfamily M member 8 |
| TRPV1 | 7442 | 219632_s_at | Transient receptor potential cation channel subfamily V member 1 |
| TRPV2 | 51393 | 219282_s_at | Transient receptor potential cation channel subfamily V member 2 |
| TRPV2 | 51393 | 222855_s_at | Transient receptor potential cation channel subfamily V member 2 |
| TRPV4 | 59341 | 219516_at | Transient receptor potential cation channel subfamily V member 4 |
| TRPV5 | 56302 | 208267_at | Transient receptor potential cation channel subfamily V member 5 |
| TRPV6 | 55503 | 206827_s_at | Transient receptor potential cation channel subfamily V member 6 |

| | | | |
|-------|--------|-------------|---|
| TSHR | 7253 | 210055_at | Thyrotropin receptor |
| TSHR | 7253 | 215442_s_at | Thyrotropin receptor |
| TSHR | 7253 | 215443_at | Thyrotropin receptor |
| TSHR | 7253 | 237349_at | Thyrotropin receptor |
| TYK2 | 7297 | 205546_s_at | Non-receptor tyrosine-protein kinase TYK2 |
| TYRO3 | 7301 | 211431_s_at | Tyrosine-protein kinase receptor TYRO3 |
| TYRO3 | 7301 | 211432_s_at | Tyrosine-protein kinase receptor TYRO3 |
| UNC5A | 90249 | 236448_at | Netrin receptor UNC5A |
| UNC5A | 90249 | 243833_at | Netrin receptor UNC5A |
| UNC5B | 219699 | 213100_at | Netrin receptor UNC5B |
| UNC5B | 219699 | 226899_at | Netrin receptor UNC5B |
| UNC5B | 219699 | 41856_at | Netrin receptor UNC5B |
| UNC5C | 8633 | 206189_at | Netrin receptor UNC5C |
| UNC5C | 8633 | 227838_at | Netrin receptor UNC5C |
| UNC5C | 8633 | 240958_at | Netrin receptor UNC5C |
| UNC5D | 137970 | 231325_at | Netrin receptor UNC5D |
| VDR | 7421 | 204253_s_at | Vitamin D3 receptor |
| VDR | 7421 | 204254_s_at | Vitamin D3 receptor |
| VDR | 7421 | 204255_s_at | Vitamin D3 receptor |
| VDR | 7421 | 213692_s_at | Vitamin D3 receptor |
| VIPR1 | 7433 | 205019_s_at | Vasoactive intestinal polypeptide receptor 1 |
| VIPR2 | 7434 | 205946_at | Vasoactive intestinal polypeptide receptor 2 |
| VIPR2 | 7434 | 205947_s_at | Vasoactive intestinal polypeptide receptor 2 |
| VIPR2 | 7434 | 211598_x_at | Vasoactive intestinal polypeptide receptor 2 |
| VLDLR | 7436 | 209822_s_at | Very low-density lipoprotein receptor |
| VN1R1 | 57191 | 221412_at | Vomeroneasal type-1 receptor 1 |
| VN1R3 | 317702 | 224290_at | Vomeroneasal type-1 receptor 3 |
| XCR1 | 2829 | 221468_at | Chemokine XC receptor 1 |
| XPR1 | 9213 | 222581_at | Xenotropic and polytropic retrovirus receptor 1 |
| XPR1 | 9213 | 226615_at | Xenotropic and polytropic retrovirus receptor 1 |
| XPR1 | 9213 | 244755_at | Xenotropic and polytropic retrovirus receptor 1 |

Table S2. CMK cell viability after siRNA knockdown of 188 genes of non-kinase cytokine and growth factor receptor families from Plate 1 and 2. GENE refers to siRNA target, VIABILITY values represent percent mean (normalized to the median value for all wells on the plate), S.E. refers to standard error of the mean, T-TEST refers to p-value of t-test between individual gene viability and non-specific siRNA viability. Most potent hit on siRNA plate 1 and 2 is highlighted in red.

| GENE (PLATE 1) | VIABILITY | S.E. | T-TEST |
|-----------------------|------------------|-------------|---------------|
| ADIPOR1 | 103 | 0.244 | 0.201 |
| ADIPOR2 | 103 | 3.06 | 0.265 |
| BMPR2 | 90 | 1.08 | 0.059 |
| ADRM1 | 79 | 2.246 | 0.055 |
| ATP6AP2 | 84 | 1.038 | 0.056 |
| BTLA | 96 | 3.513 | 0.183 |
| C10ORF54 | 81 | 1.164 | 0.025 |
| C5AR1 | 98 | 2.768 | 0.056 |
| CCKAR | 99 | 4.158 | 0.036 |
| CCR1 | 96 | 1.016 | 0.084 |
| CCR10 | 76 | 1.619 | 0.027 |
| CCRL1 | 103 | 3.252 | 0.132 |
| CCR2 | 121 | 2.752 | 0.533 |
| CCR3 | 92 | 2.921 | 0.138 |
| CCR4 | 96 | 3.419 | 0.186 |
| CCR5 | 111 | 1.832 | 0.662 |
| CCR6 | 89 | 1.761 | 0.08 |
| CCR7 | 119 | 2.026 | 0.634 |
| CCR8 | 114 | 2.268 | 0.888 |
| CCR9 | 111 | 0.688 | 0.656 |
| CD163 | 97 | 3.778 | 0.171 |
| CD80 | 90 | 3.73 | 0.13 |
| CD5 | 69 | 0.461 | 0.022 |
| CD180 | 107 | 1.013 | 0.355 |
| CD22 | 111 | 2.387 | 0.545 |
| CD24 | 98 | 1.289 | 0.158 |
| CD27 | 104 | 2.13 | 0.308 |
| CD3E | 92 | 3.008 | 0.071 |
| CD4 | 97 | 3.749 | 0.21 |
| CD40 | 76 | 0.881 | 0.035 |
| CD44 | 93 | 1.212 | 0.066 |
| CD46 | 96 | 4.216 | 0.207 |
| CD47 | 95 | 1.551 | 0.116 |
| CD53 | 98 | 0.853 | 0.107 |
| CD74 | 103 | 1.088 | 0.19 |

| | | | |
|---------|-----|-------|-------|
| CD79A | 98 | 3.499 | 0.096 |
| CD79B | 100 | 4.923 | 0.088 |
| CD86 | 99 | 1.121 | 0.141 |
| CD97 | 99 | 4.091 | 0.246 |
| CHRNA3 | 104 | 2.27 | 0.231 |
| CHRNB2 | 70 | 1.026 | 0.029 |
| CNR2 | 91 | 3.097 | 0.12 |
| CRLF2 | 94 | 0.77 | 0.073 |
| CSF2RA | 88 | 1.311 | 0.052 |
| CSF2RB | 32 | 2.97 | 0.007 |
| CSF3R | 102 | 2.61 | 0.214 |
| CTLA4 | 108 | 2.122 | 0.282 |
| CX3CR1 | 106 | 0.886 | 0.258 |
| CXCR1 | 100 | 1.51 | 0.164 |
| CXCR2 | 124 | 4.502 | 0.396 |
| CXCR3 | 117 | 3.17 | 0.659 |
| CXCR4 | 104 | 0.521 | 0.235 |
| CXCR5 | 110 | 4.033 | 0.194 |
| CXCR6 | 101 | 6.34 | 0.368 |
| CXCR7 | 112 | 3.161 | 0.728 |
| CELSR2 | 101 | 5.519 | 0.073 |
| EPOR | 110 | 1.681 | 0.613 |
| FAS | 115 | 1.672 | 0.951 |
| FCER1G | 104 | 2.793 | 0.244 |
| FCGR2C | 105 | 1.921 | 0.169 |
| FCGR3B | 97 | 1.522 | 0.077 |
| FCGRT | 96 | 0.577 | 0.116 |
| FCRL3 | 104 | 3.169 | 0.199 |
| FCRL5 | 96 | 1.097 | 0.075 |
| FCRLA | 91 | 2.396 | 0.108 |
| FCGR1A | 84 | 1.898 | 0.062 |
| GABBR2 | 82 | 3.896 | 0.087 |
| GABBR1 | 99 | 2.363 | 0.185 |
| GPR113 | 104 | 7.944 | 0.492 |
| GPR115 | 101 | 2.488 | 0.234 |
| GPR128 | 98 | 1.565 | 0.181 |
| GPR153 | 105 | 8.219 | 0.448 |
| GPR156 | 111 | 3.459 | 0.658 |
| GPR172A | 97 | 3.167 | 0.073 |
| GPR176 | 106 | 3.642 | 0.434 |
| GPR68 | 103 | 0.595 | 0.243 |
| GPR158 | 95 | 1.483 | 0.104 |
| HTR4 | 97 | 2.13 | 0.07 |

| | | | |
|---------------|-----|-------|-------|
| NCOA7 | 88 | 2.24 | 0.028 |
| NCOA3 | 104 | 1.36 | 0.197 |
| NCOA4 | 78 | 4.636 | 0.064 |
| NCOA6 | 104 | 3.217 | 0.254 |
| NCOR2 | 106 | 1.777 | 0.377 |
| NCR2 | 113 | 1.716 | 0.696 |
| GRM1 | 112 | 2.118 | 0.705 |
| GRM2 | 99 | 3.377 | 0.262 |
| GRM3 | 109 | 3.244 | 0.513 |
| GRM4 | 113 | 1.742 | 0.847 |
| GRM6 | 98 | 3.509 | 0.207 |
| DRD2 | 100 | 1.18 | 0.174 |
| DRD5 | 98 | 1.105 | 0.161 |
| PEX5 | 115 | 1.891 | 0.967 |
| OGFR | 100 | 2.514 | 0.067 |
| PILRB | 113 | 0.603 | 0.756 |
| NON-SILENCING | 115 | 6.751 | N/A |

| GENE (PLATE 2) | VIABILITY | S.E. | T-TEST |
|-----------------------|------------------|-------------|---------------|
| IFNAR1 | 120 | 2.544 | 0.032 |
| IFNAR2 | 112 | 3.173 | 0.001 |
| IFNGR1 | 89 | 2.593 | 0.311 |
| IFNGR2 | 104 | 2.57 | 0.165 |
| IL10RA | 117 | 5.212 | 0.012 |
| IL10RB | 110 | 2.529 | 0.079 |
| IL11RA | 100 | 2.35 | 0.613 |
| IL12RB1 | 96 | 3.367 | 0.961 |
| IL12RB2 | 95 | 0.756 | 0.651 |
| IL13RA1 | 83 | 1.959 | 0.085 |
| IL13RA2 | 101 | 3.453 | 0.384 |
| IL15RA | 104 | 6.665 | 0.411 |
| IL17RA | 115 | 4.586 | 0.08 |
| IL17RB | 105 | 1.458 | 0.127 |
| IL17RC | 96 | 4.459 | 0.961 |
| IL17RD | 100 | 0.823 | 0.507 |
| IL17RE | 93 | 3.793 | 0.139 |
| IL18R1 | 104 | 3.199 | 0.258 |
| IL1R1 | 88 | 2.115 | 0.271 |
| IL1R2 | 105 | 2.315 | 0.164 |
| IL21R | 97 | 1.494 | 0.911 |
| IL22RA1 | 96 | 0.787 | 0.994 |

| | | | |
|--------|-----|-------|-------|
| IL23R | 92 | 3.428 | 0.355 |
| IL27RA | 91 | 3.184 | 0.227 |
| IL2RA | 102 | 2.197 | 0.112 |
| IL2RB | 115 | 0.761 | 0.038 |
| IL2RG | 16 | 1.946 | 0.005 |
| IL3RA | 105 | 3.94 | 0.264 |
| IL4R | 99 | 2.912 | 0.672 |
| IL6R | 90 | 3.815 | 0.224 |
| IL7R | 101 | 6.242 | 0.538 |
| IL9R | 103 | 1.778 | 0.341 |
| IL1RAP | 100 | 0.14 | 0.456 |
| IL20RA | 92 | 2.73 | 0.582 |
| IL31RA | 113 | 1.601 | 0.079 |
| IL6ST | 109 | 3.252 | 0.114 |
| IGF2R | 114 | 2.672 | 0.042 |
| EMR1 | 111 | 1.005 | 0.034 |
| RYR2 | 107 | 4.817 | 0.125 |
| LAIR1 | 105 | 2.777 | 0.293 |
| LBR | 95 | 4.88 | 0.84 |
| LEPR | 101 | 3.36 | 0.517 |
| TRIP6 | 95 | 1.564 | 0.757 |
| TSHR | 105 | 3.632 | 0.261 |
| LIFR | 107 | 1.762 | 0.028 |
| OSMR | 106 | 3.127 | 0.279 |
| LILRB3 | 116 | 0.884 | 0.045 |
| LPAR1 | 107 | 2.012 | 0.03 |
| LPR10 | 122 | 5.138 | 0.045 |
| LTBR | 109 | 7.483 | 0.238 |
| M6PR | 102 | 2.886 | 0.4 |
| MPL | 91 | 2.23 | 0.265 |
| PLAUR | 113 | 3.269 | 0.121 |
| PNRC1 | 86 | 2.712 | 0.124 |
| PNRC2 | 108 | 1.318 | 0.137 |
| PTAFR | 86 | 1.261 | 0.043 |
| PTCRA | 87 | 2.421 | 0.021 |
| PTGER1 | 100 | 0.882 | 0.452 |
| SORCS1 | 95 | 3.581 | 0.822 |
| S1PR2 | 111 | 6.292 | 0.171 |
| SORCS2 | 116 | 1.116 | 0.045 |
| SORCS3 | 99 | 1.544 | 0.499 |
| RELT | 82 | 4.833 | 0.15 |
| S1PR1 | 100 | 0.834 | 0.375 |
| S1PR4 | 96 | 5.779 | 0.983 |

| | | | |
|---------------|-----|-------|-------|
| SORL1 | 109 | 7.64 | 0.29 |
| TGFBR3 | 99 | 3.172 | 0.507 |
| TNFRSF18 | 83 | 1.398 | 0.037 |
| TNFRSF8 | 111 | 2.894 | 0.065 |
| TFR2 | 89 | 1.05 | 0.173 |
| TFRC | 111 | 3.75 | 0.082 |
| TGFBR1 | 107 | 4.337 | 0.127 |
| TGFBR2 | 112 | 5.022 | 0.134 |
| TLR1 | 110 | 5.087 | 0.182 |
| TLR10 | 107 | 5.315 | 0.33 |
| TLR2 | 91 | 0.768 | 0.227 |
| TLR3 | 103 | 2.606 | 0.024 |
| TLR4 | 116 | 1.347 | 0.045 |
| TLR5 | 108 | 1.41 | 0.065 |
| TLR6 | 85 | 4.982 | 0.235 |
| TLR7 | 92 | 1.884 | 0.462 |
| TLR8 | 94 | 3.594 | 0.631 |
| TLR9 | 95 | 1.675 | 0.628 |
| TNFRSF1A | 78 | 0.388 | 0.03 |
| TNFRSF1B | 91 | 4.511 | 0.535 |
| TNFRSF21 | 100 | 1.058 | 0.45 |
| TNFRSF10A | 93 | 3.594 | 0.625 |
| TNFRSF10C | 86 | 8.754 | 0.447 |
| TNFRSF19 | 92 | 6.772 | 0.352 |
| TOMM20 | 97 | 3.849 | 0.851 |
| TOMM34 | 94 | 4.184 | 0.72 |
| TOMM5 | 102 | 2.713 | 0.066 |
| XCR1 | 98 | 1.811 | 0.789 |
| XPR1 | 105 | 0.639 | 0.174 |
| NON-SILENCING | 96 | 3.562 | N/A |