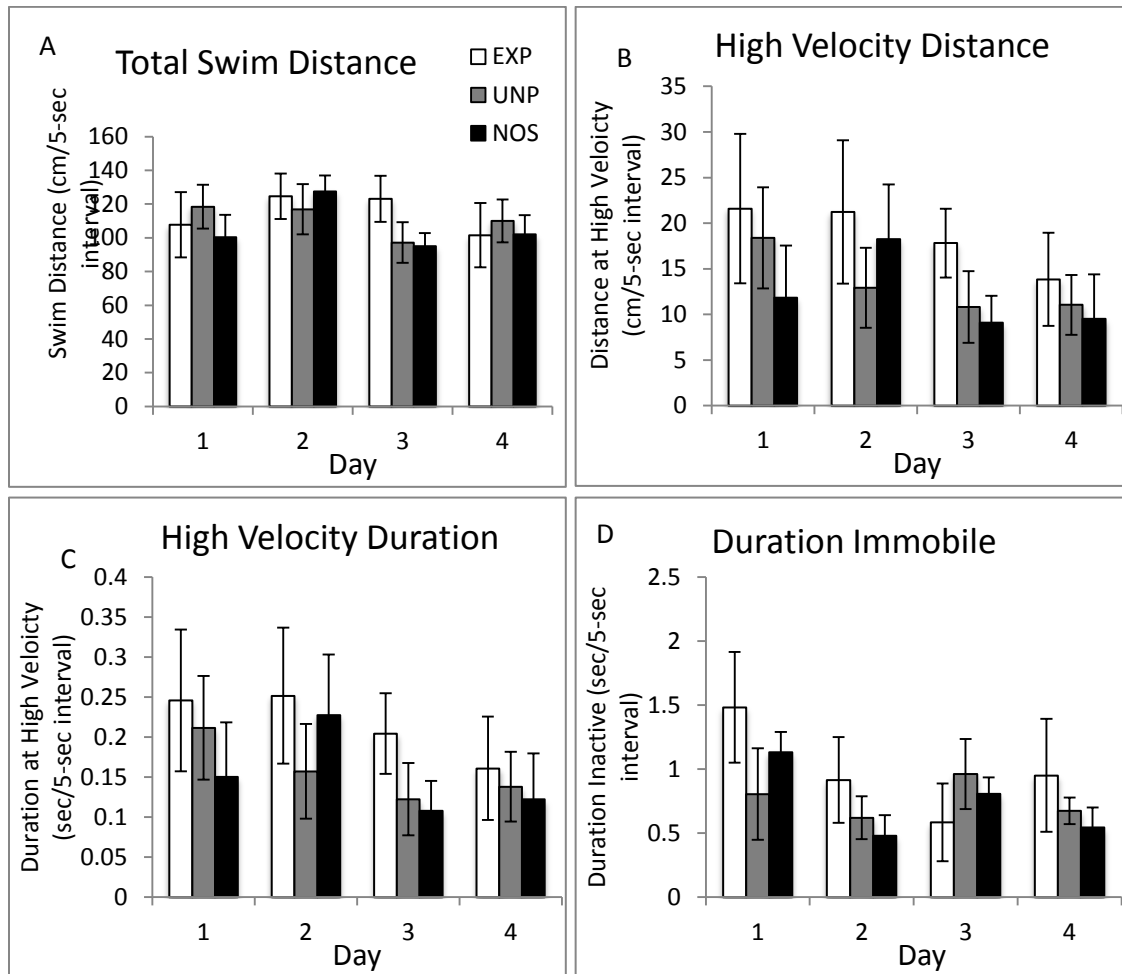
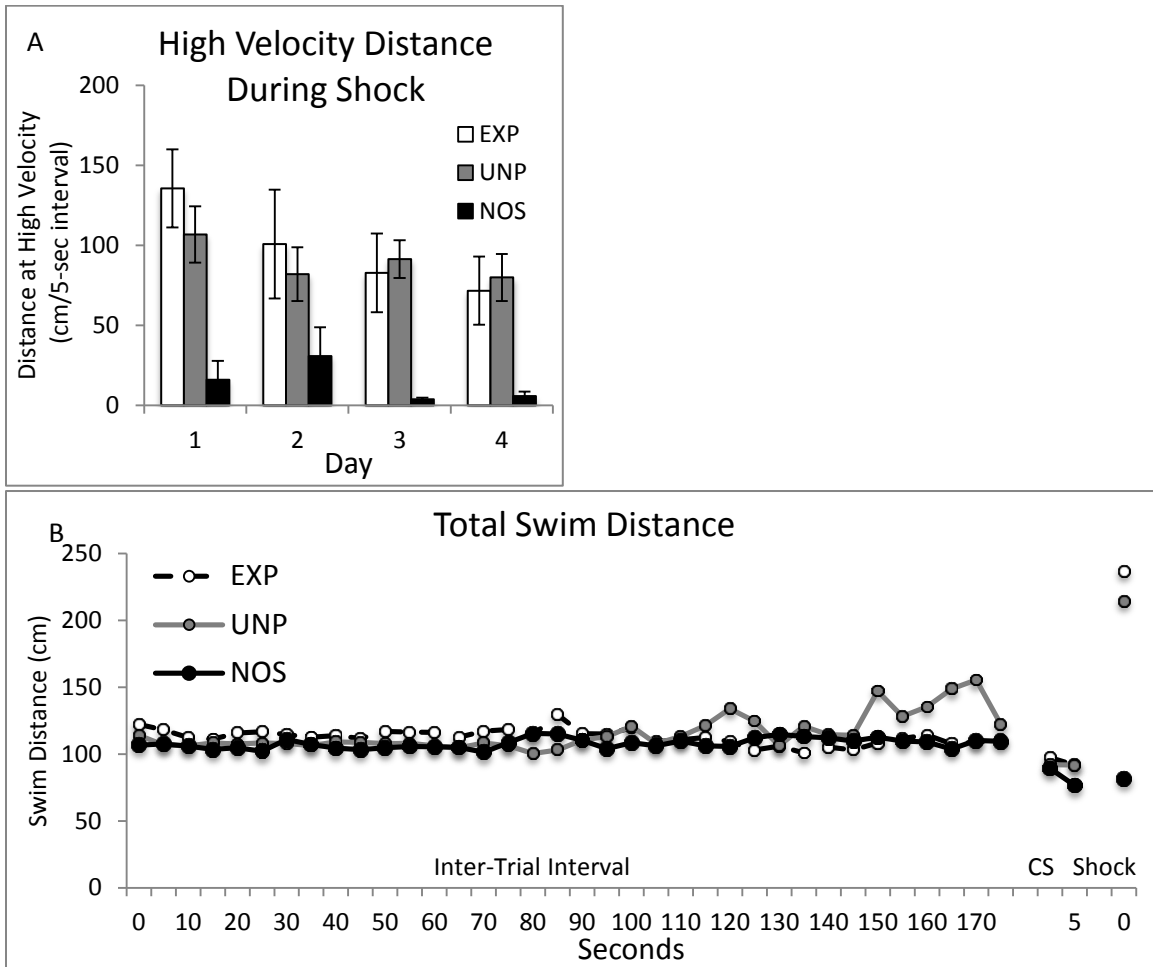


Supplementary Figure 1



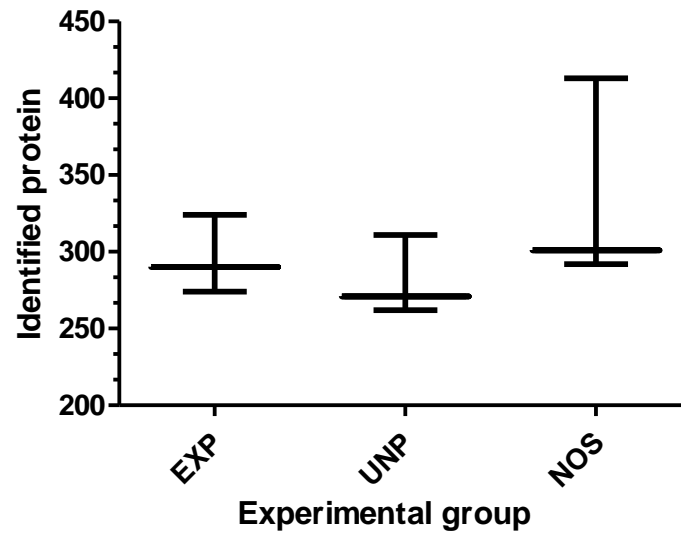
Locomotor activity across days. Data were recorded in 5-sec intervals, which were averaged to produce each measure. A) The total swim distance (cm/5-sec interval); there were no significant changes in total swim distance across days. B) The distance at high velocity (cm/5-sec interval); there was a significant reduction in high velocity swim distance across days. C) the duration at high velocity (sec/5-sec interval); there was a significant reduction in duration at high velocity across days. D) the duration immobile (sec/5-sec interval); there were no significant effects on duration immobile.

Supplementary Figure 2



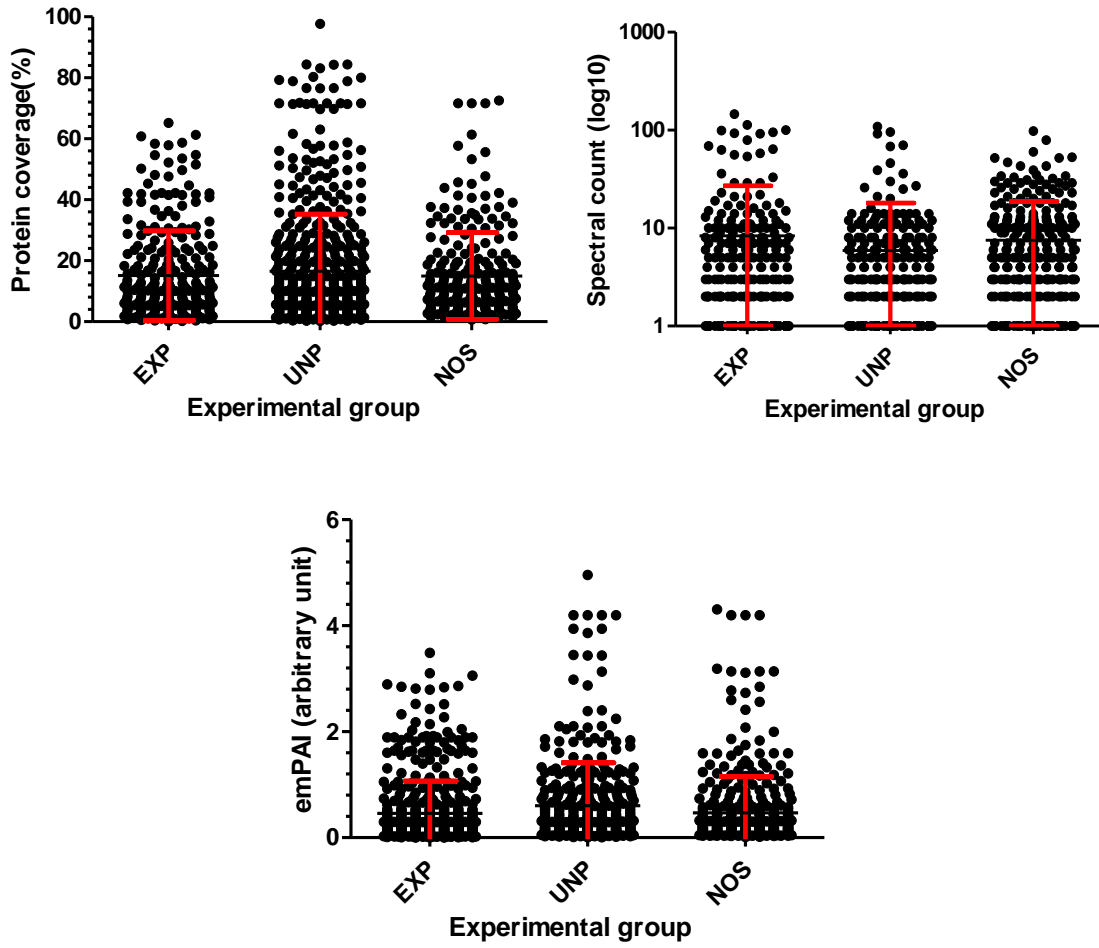
Behavioral response to shock - A) Distance moved at high velocity across days (cm/5-sec interval); there was a significant reduction in high velocity swimming across days. B) Total Swim Distance by 5-sec interval across the ITI, CS and shock (averaged across all trials).

Supplementary figure 3.



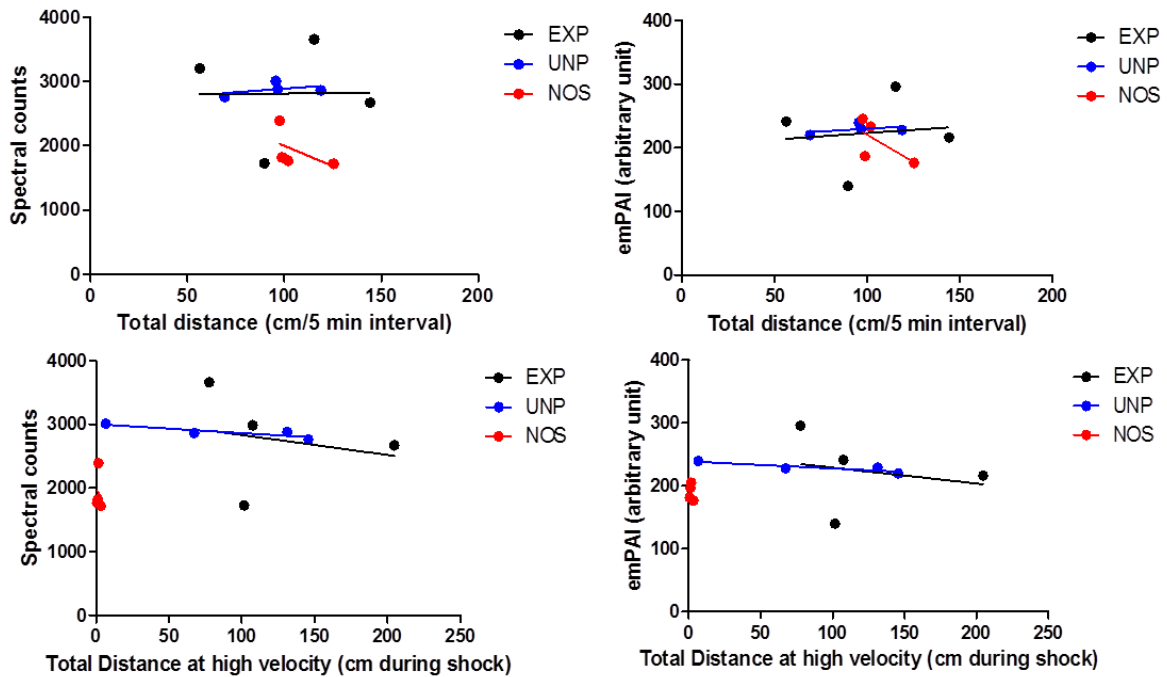
Number of identified proteins in each individual. Experimental (EXP), Unpaired (UNP), and No Shock control (NOS). Statistically, no significant difference in protein number were recognized between experimental groups.

Supplementary figure 4.



Protein coverage (left panel), protein spectral count (right panel), and Exponentially Modified Protein Abundance Index (emPAI) identified in experimental groups. Error bars represents (SD). Experimental (EXP), Unpaired (UNP), and No Shock control (NOS).

Supplementary figure 5.



	EXP		UNP		NOS	
Spareman (non parametric)	r^2	P value	r^2	P value	r^2	P value
Dis vs. spec c	0.0008	0.99	0.195	0.54	0.279	0.47
Dis(high V) vs. spec c	0.0142	0.87	0.195	0.54	0.435	0.34
Dis vs. emPAI	0.475	0.78	0.757	0.13	0.014	0.87
Dis(high V) vs. emPAI	0.047	0.77	0.754	0.13	0.134	0.13

Spareman's correlation between total distances (cm/5min interval) against protein spectral count (upper left) and Exponentially Modified Protein Abundance Index (emPAI) (upper right), or between total distance traveled at high velocity (cm during shock) against protein spectral count (lower left) and Exponentially Modified Protein Abundance Index (emPAI) (lower right). Experimental (EXP), Unpaired (UNP), and No Shock control (NOS).