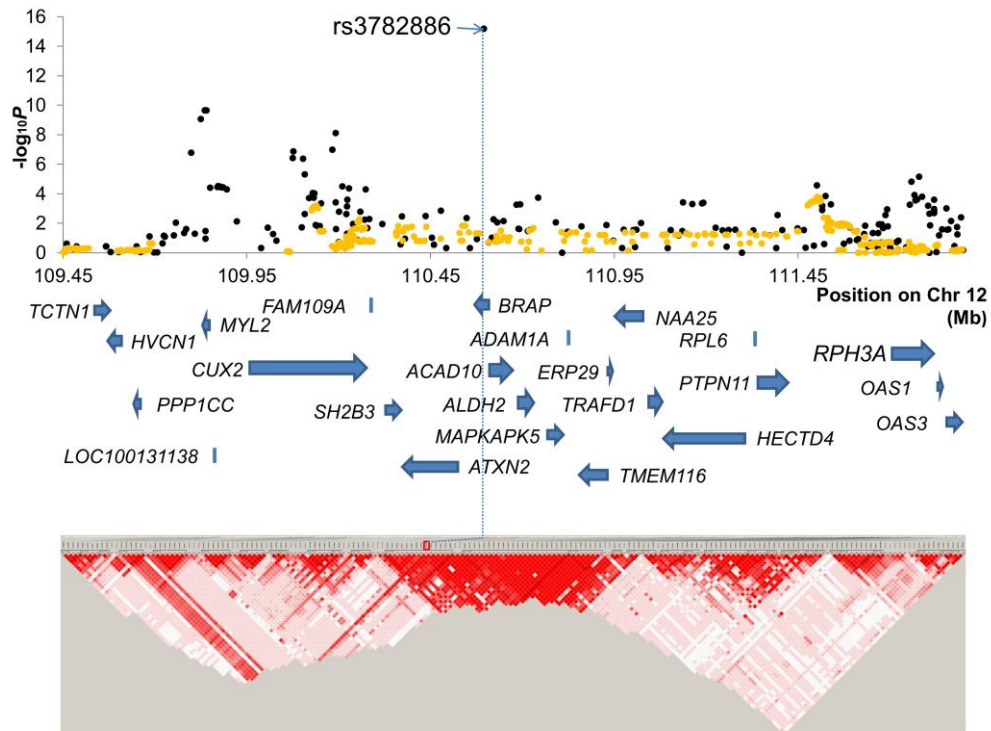


Figure S2

A



B

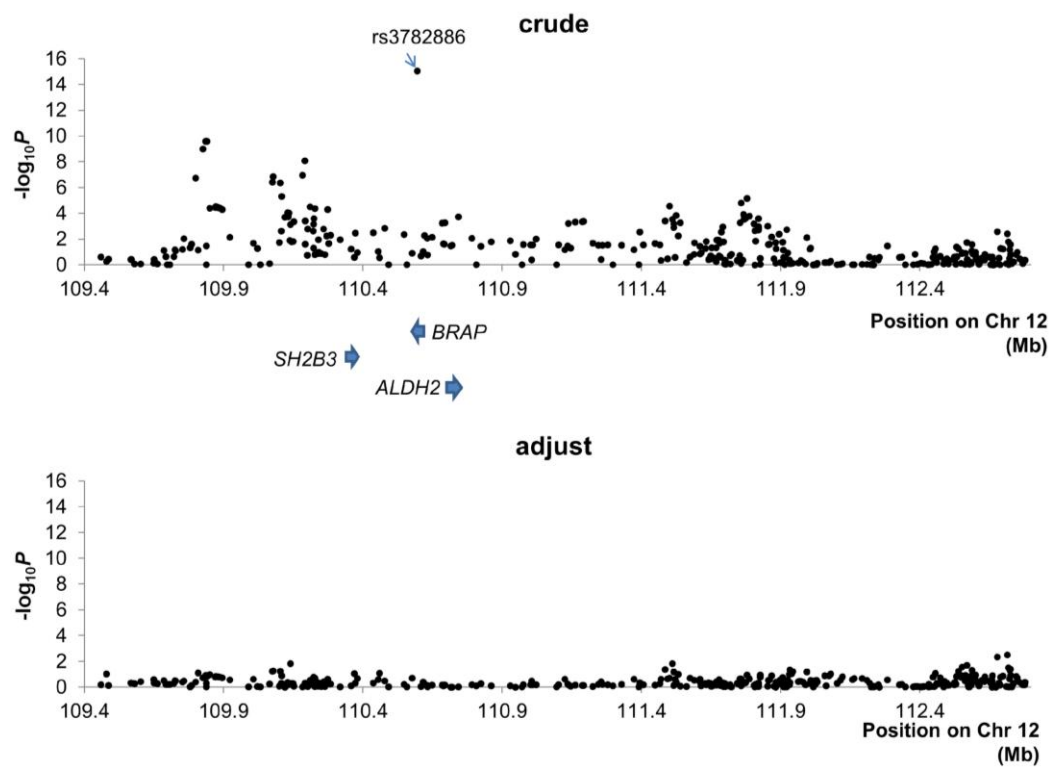


Figure S2
Result of chromosome 12q24.

(A) Case-control association plots, LD map and genomic structure of 12q24.

Black dots represent $-\log_{10}P$ obtained from GWAS samples. Orange dots represent $-\log_{10}P$ obtained from imputation data. We drew the LD map based on D' values using the genotype data from the cases and controls in the GWAS samples. Arrows and lines indicate the location of genes. (B) P values for association results of GWAS and logistic regression analysis of 12q24 before and after adjustment for rs3782886. Arrows indicate the location of genes. *BRAP* and *ALDH2* were reported in Japanese GWAS¹⁰. *SH2B3* was reported in European GWAS¹⁴.