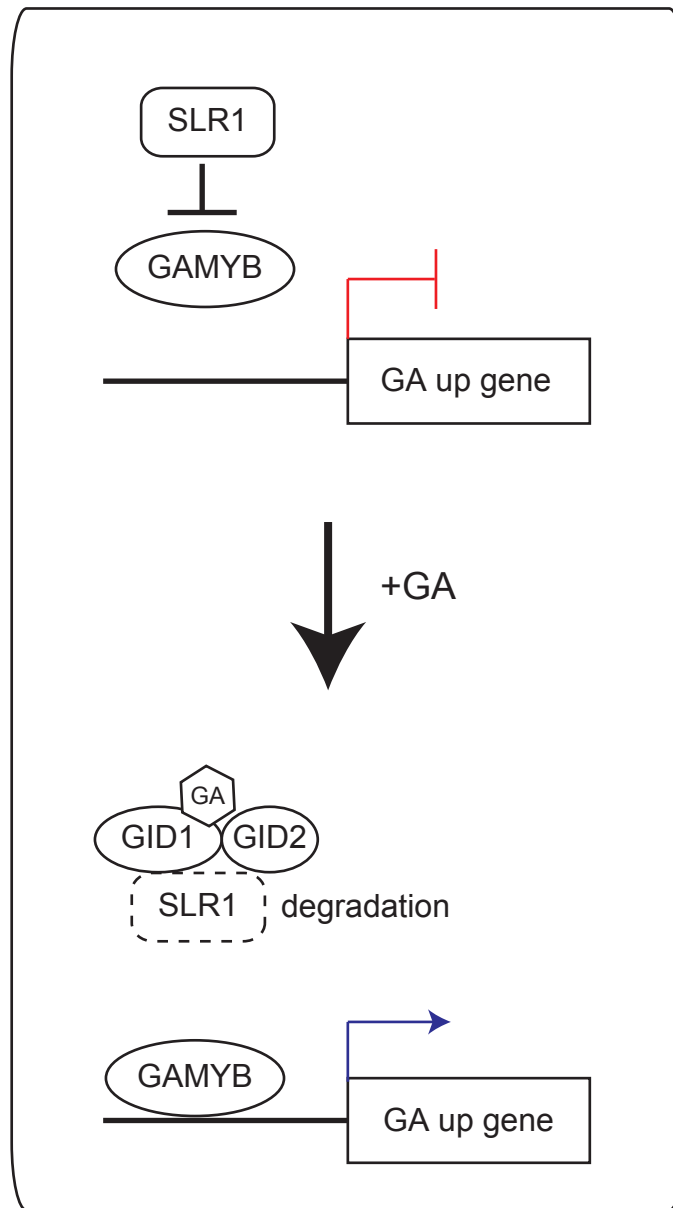
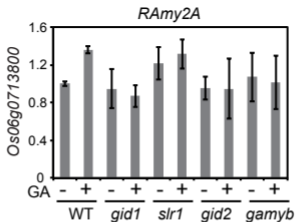


GA up-regulated genes



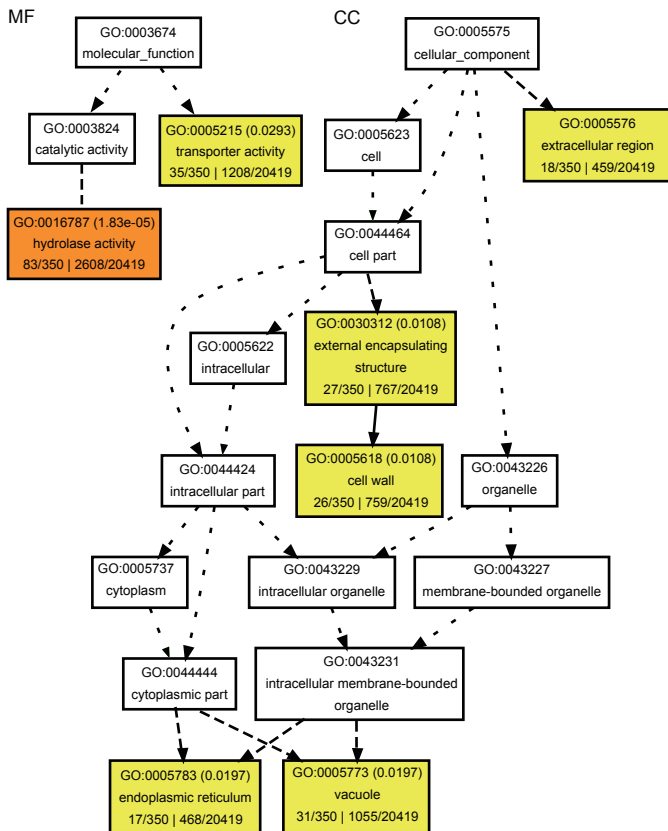
Supplemental Figure S1. Simplified model of GA-regulated gene expression in rice aleurone cells.



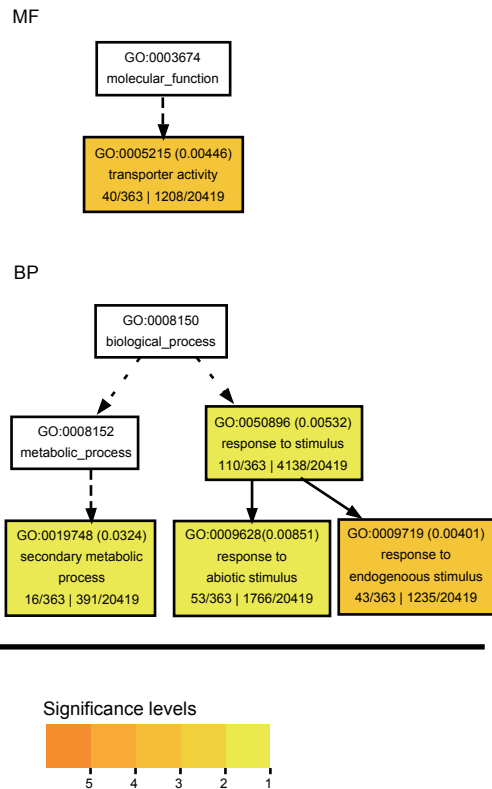
Supplemental Figure S2. qRT-PCR analysis of *RAmy2A* in embryoless half-seeds of *gid1*, *slr1*, *gid2*, and *gamyb*.

Experimental conditions are described in Fig. 1. The data presented are means \pm SD of four replicates.

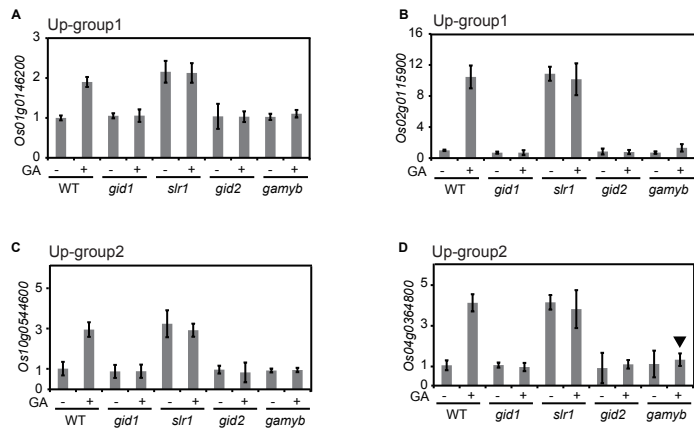
GA up-regulated genes



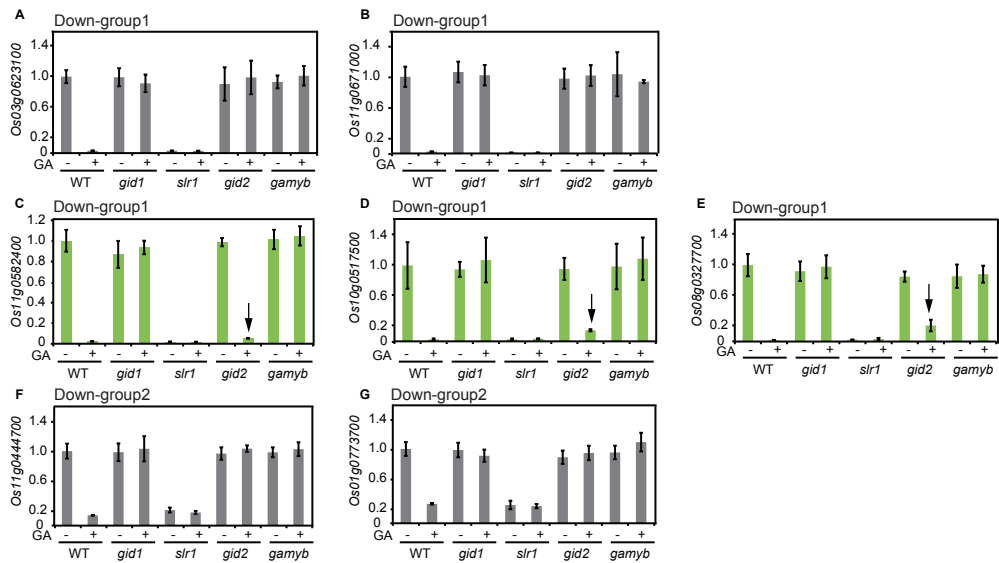
GA down-regulated genes



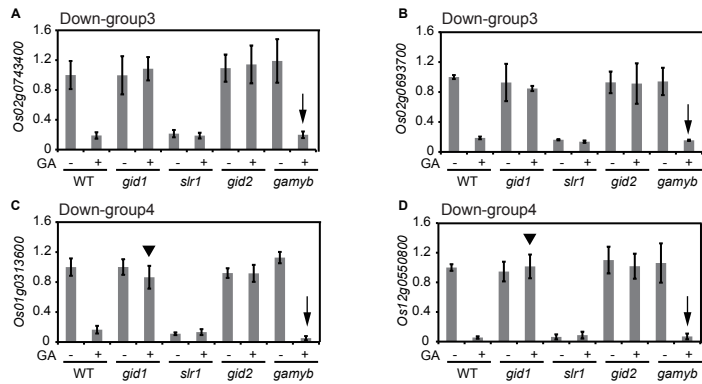
Supplemental Figure S3. Gene Ontology analysis of GA-regulated genes. GO analysis by agriGO (<http://bioinfo.cau.edu.cn/agriGO/index.php>) with respect to MF, CC, and biological process (BP) for GA up- or down-regulated genes. The enrichment level of the term is indicated by the color intensity of boxes. Solid, dashed, and dotted lines represent two-, one- and zero- enriched terms between connected boxes, respectively.



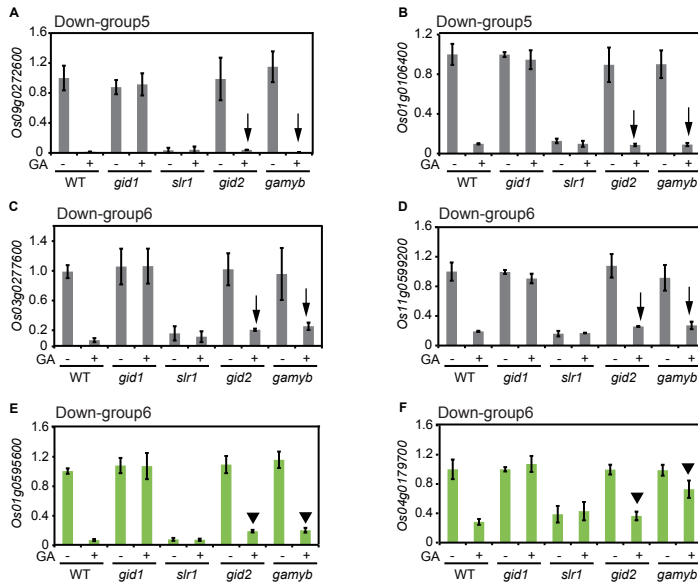
Supplemental Figure S4. Expression analysis of two representative genes in Up-group1 (A) and (B), and Up-group2 (C) and (D) by RT-PCR. The arrowheads in panel (D) show no GA-mediated changes in the expression of *Os04g0364800* by GA, although the corresponding array data indicated significant down-regulation (arrowhead in Fig. 6B). The data presented are means \pm SD of four replicates.



Supplemental Figure S5. Expression analysis of two representative genes in Down-group1 (A) and (B), and Down-group2 (F) and (G) by qRT-PCR. The expression of three genes having obvious downward outliers in *gid2* (green lines in Fig. 6C) was also analyzed (arrows in panels C-E). The data presented are means \pm SD of four replicates.

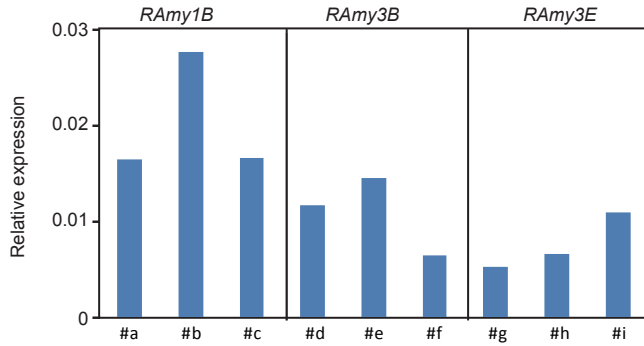


Supplemental Figure S6. Expression analysis of two representative genes in Down-group3 (A) and (B), and Down-group4 (C) and (D) by RT-PCR. The down-regulation of genes in *gamyb* is indicated by arrows. Although array data showed downward outliers in Down-group4 in *gid1* (Fig. 6F), down-regulation in *gid1* was not detected by qRT-PCR (arrowheads in panels C and D). The data presented are means \pm SD of four replicates.



Supplemental Figure S7. Expression analysis of two representative genes in Down-group5 (A) and (B) and Down-group6 (C) and (D) by qRT-PCR.

Down-regulation of genes in *gid2* and *gamyb* are indicated by arrows. The expression of genes not fully down-regulated in *gid2* or *gamyb* (green lines in Fig. 6H) is indicated by arrowheads in panels (E) and (F). The data presented are means \pm SD of four replicates.



Supplemental Figure S8. Expression analysis of endogenous *RAmy1B*, *3B*, and *3E* in comparison to endogenous *Ubi* expression in embryoless half-seeds in the absence of GA by qRT-PCR.